



Issue 5

City of Bath Newsletter

September 2009

Features

- 1• Bath Receives National Neighborhood Watch Award
- 1• Municipal Meetings
- 2• Commonly Called Numbers
- 2• Department Feature: Wastewater Treatment Plant
- 3• Don't Miss the BIW Trolley Tours
3. Bath's New Hotel
- 4• Phase 2 of Wing Farm
- 4• Citizen Involvement Day
5. Grateful Bath Bus Riders
- 6• Changes & Accolades for Main Street Bath
- 7• Bath Train Park Project
- 7• Thank you Bath VFW
- 8• Silver Bugle Returns to Bath

Municipal Meetings:

For holiday changes and additional meetings, please see the calendar on www.cityofbath.com

- City Council—1st Wednesdays, 6:00 pm, City Hall, Council Chambers
- Planning Board—1st & 3rd Tuesdays, 6:00 pm, City Hall, Council Chambers
- Community Forestry—1st Wednesdays, 6:00 pm, City Hall, Basement Conference Room
- Community Development Committee—2nd Thursdays, 4:00 pm, City Hall, 2nd Floor Conference Room
- Zoning Board of Appeals—1st Mondays as needed, 7:00 pm, City Hall Basement

Did you know? *The City Treasurer's Office has two drop boxes for customers who do not want to wait in line, or cannot make office hours. One is located inside City Hall on the first floor, and the other is outside on the north side entrance of the building. We hope this will help customers pay their property taxes or other City bills with ease.*

Bath Police Receive National Neighborhood Watch Award

The Bath Police Department and Bath Community Policing (CP2) were recently honored with the "National Neighborhood Watch Award of Excellence for a Police Department." This distinction was awarded jointly by the National Sheriffs Association and the Bureau of Justice Assistance at the NSA 69th Annual Conference held in Fort Lauderdale in June.

Chief Michael Field and Cpl. Nathan Gould attended an all-expense-paid trip to the Conference to accept the national award on behalf of the Department and CP2. At the General Session there were over 1,000 people from all over the country. The keynote speaker was the Secretary of Homeland Security, Janet Napolitano.

CP2 Chairman Jim Gillies submitted our nomination for this prestigious award, which is given to only one sheriff's department, one municipal department, and one community in the entire United States.

Our Department received this award for the hard work done by our police officers, civilian staff, and CP2 volunteers who are involved in a variety of programs such as Community Speed Watch, House Watch, Harbor and Island Patrols, Neighborhood Watch and the Good Morning Program.

"I am very honored and humbled by such a prestigious award," said Police Chief Michael Field. "This just reinforces and recognizes the

(continued on page 5)



Cpl. Nathan Gould, CP2 & VIPS Chair Jim Gillies, and Police Chief Michael Field

City of Bath Commonly Called Numbers:

Animal Control.	443-5563
Assessor's Office.	443-8336
Bath Area Family YMCA.	443-4112
Bath Community TV.	443-8387
Bath Skatepark.	443-8900
Bath Train Station.	442-7371
Bath Water District.	443-2391
Southern Midcoast Chamber of Commerce.	725-8797
Parks and Recreation Dept.	443-8360
City Clerk's Office.	443-8332
City Manager's Office.	443-8330
City Planner's Office.	443-8363
Codes Office.	443-8334
Community Development Office.	443-8372
Finance Dept.	443-8338
Fire Dept.	443-5034
General Assistance.	443-8335
Landfill.	443-8356
Main Street Bath.	442-7291
Maintenance Dept.	443-8365
Police Dept.	443-5563
Public Works Dept.	443-8357
Sagadahoc County Courthouse.	443-8200
Treasurer's Office.	443-8340
U.S. Post Office, Bath.	443-9778
West Bath District Courthouse.	442-0200

Information about municipal happenings such as meetings, new construction projects, changes at the landfill, or clean up days, are published in the local newspapers and advertised on Bath Community Television. You can also find up-to-date information on the City of Bath's website at www.cityofbath.com or by calling the appropriate department.

Department Spotlight: Waste Water Treatment Plant

Bath's Waste Water Treatment Plant processes, on average, two million gallons of sewage a day. The amount rises significantly when it rains heavily as most of the storm drains in the City are connected to sewer pipes and not separate storm water pipes. Storm water does not have to be treated as waste water. In addition, the sand and road debris wreak havoc on the costly treatment equipment. One of the City's long term goals is to separate the storm water from the sewage before it gets to the treatment plant—one of this summer's heavier rains resulted in 17 million gallons of inflow.

Chris Wallace, the Superintendent of the Wastewater Treatment Plant, and his five and a half employees maintain the plant as well as the 13 pump stations located throughout the City. The department has been nominated for a state-wide Certificate of Achievement Award by the Maine Department of Environmental Protection to be awarded in September at the Maine Wastewater Treatment Control Association Conference.

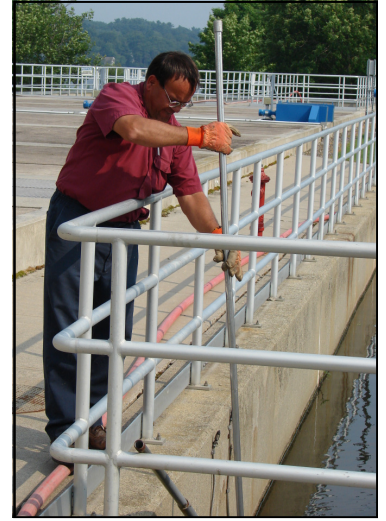
Once wastewater leaves your home it flows by gravity through the sewers to one of the pump stations and makes it way to the Waste Water Treatment Plant on upper Bowery Street. All sewage comes into the Headwork's Building where large debris and sand are removed and sodium hydroxide is added to adjust the pH to a neutral level before reaching the sewage treatment plant. Samples are taken at this stage three times a week by an automated system and analyzed for Biochemical Oxygen Demand (BOD), Total Suspended Solids (TSS)

From the Headwork's the sewage runs underground to the large round Primary Clarifiers where very slow moving "paddles" help settle the sludge to the bottom of the 15-foot tank—again removing as much smaller debris as possible. Sludge, millions and millions of active bacteria, is collected from the tanks and added to the raw sewage—the combination is called "mixed liquor." The sludge is actually doing the work of digesting and cleaning the sewage.

The mixed liquor flows underground to the aeration basin where hundreds of tiny aerators keep the liquid moving and full of oxygen. The mixture then goes to the Secondary Clarifier to remove the sludge. The "young" sludge is collected and reused in the process while the "old" sludge is removed and taken to the landfill.

The effluent of the secondary clarifiers—which is clear water at this stage—is pumped to the chlorine detention tank for disinfection. The liquid is injected with sodium hypochlorite and sits in the tank for a couple of hours depending on the flow. Finally, the water will be dechlorinated with sodium bisulfate, and deposited in the Kennebec River.

The City of Bath has a full time lab operator, Bob Gonzalez,



Bob Gonzalez, Chief Operator 1st Class, taking a sample from the chlorine detention tank to test at the full lab at Bath's WWTP.

Don't Miss Maine Maritime Museum's BIW Trolley Tours

Maine Maritime Museum offers a one-of-a-kind opportunity: Go behind the gates of Bath Iron Works on a one-hour behind-the-scenes tour. BIW built its first Navy ship, the gunboat USS *Machias*, in 1893 and its first commercial ship a year later. Its 425+ shipbuilding contracts have included over 245 military ships and more than 169 private yachts and commercial vessels, including the yacht *Ranger*, winner of the 1937 America's Cup. During WWII, crews worked around the clock building 82 destroyers for the Navy. At the peak, they delivered one ship every 17 days.

"After 9/11 we stopped all visits other than those directly related to our business with the US Navy, even veterans groups," said Jim DeMartini, the communications manager. "But it didn't feel good. A lot of us are Navy veterans and reservists and we're all proud of what we do. When the museum came to us about reinstating the tours, we agreed. . . . It gives us the opportunity to show the public what we do and how proud we are of the tremendous skill it takes to build a Navy warship." (*Boston Globe*, April 5, 2009).

Tour guides, mostly retired BIW employees, de-

scribe the fabrication process, the old launching ways and the Land Level Transfer Facility that enables workers to complete 85 percent of construction on dry land and move the nearly complete ship to dry dock for launching into the Kennebec. Participants will see ships in various stages of construction as they roll slowly past assembly buildings, pretty close to the action, with employees waving as the trolley passes by. The tour ends with views of the "big white building," the cutting edge Ultra Hall, which enables construction of large ship modules, some exceeding the size of a World War II destroyer, in an environmentally controlled area which is safer for the shipbuilders and more efficient.

The tours, which begin at the Museum, are "not to be missed." (*Boston Globe*,

April 5, 2009). Tours have been expanded to 5 days per week through Columbus Day, and still sell out several days in advance. Combine the trolley with a discounted one-hour boat cruise to view BIW from the water. Reservations are a must. Call (207) 443-1316 ext 0. For more information please visit the Maine Maritime Museum's website: www.mainemaritimemuseum.org.



Photo courtesy of Maine Maritime Museum

WASTEWATER (continued from page 2)

who is constantly testing the liquids at all stages of the treatment process. The daily routine testing consist of Biochemical Oxygen Demand (BOD), Total Suspended Solids (TSS), pH, Chlorine Residual, Dissolved Oxygen, Fecal Coliform Bacteria, Food to Mass Ratio, Process Control, and Sludge Management.



Treated water on its way to be dechlorinated and then to the Kennebec River.



East Elevation of Bath's new Hampton Inn

Hotel Progress & Schedule

Construction of the new Hampton Inn located on the site of the Praver Block is moving along according to plan. The structural steel and underground drainage will be completed shortly. Opechee Construction Corp. will start pouring concrete on the second and third floors and also begin roughing in the utilities.

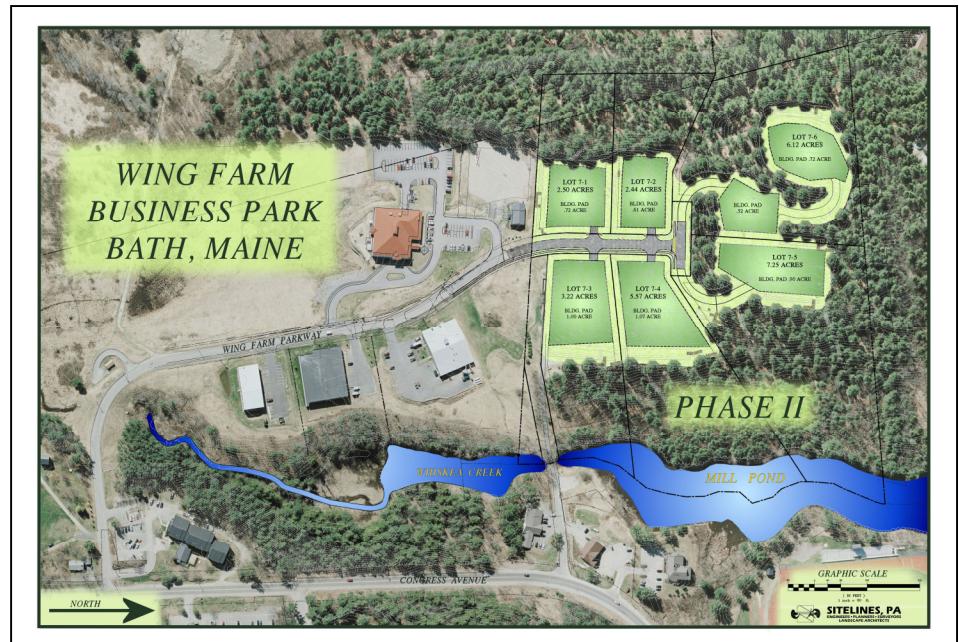
The crew is also gearing up for the new City sidewalks which will be on all sides of the property and include underground utilities, granite curbing and bases for lighting. The Sagadahock Real Estate parking lot is scheduled to be paved this month.

Six Sites Ready for Development at Wing Farm

Phase II of the Wing Farm Business Park development includes 26 acres which will be “shovel-ready” this fall. The City of Bath hopes to attract office, high technology, marine-related construction, communications and similar land uses. The purpose of the business park is to develop high quality jobs with good salaries which will help diversify the City’s economic base and help offset job losses at Brunswick Naval Air Station.

The site is within the Pine Tree Zone designated by the State of Maine. The Pine Tree Development Zone (PTDZ) legislation supports new “qualified business activity” in Maine by offering eligible businesses the chance to greatly reduce, or in some cases virtually eliminate, state taxes for up to ten years. Eligible businesses include firms engaged in manufacturing, financial services, and any of the state’s seven targeted technology sectors: biotechnology, aquaculture and marine technology, composite materials technology, environmental technology, advanced technologies for forestry and agriculture, information technology and precision manufacturing technology. Retail, hospitality and warehousing are excluded from eligibility.

Currently, Wing Farm is home to The Kennebec



Company, Gagne Foods, Custom Composite Technologies, United Way, Department of Labor’s Career Center, Department of Corrections, Vocational Rehabilitation, and Midcoast Maine Community Action Program which includes Head Start, the Resource Development Center, Keeping Seniors Home, Fuel for Friends Distribution Center, WIC, Energy Audit & Home Repair Services. These businesses employ approximately 150 people. The City is hopeful that the next phase of development will yield the same results. For more information please visit:

www.cityofbath.com/wingfarm/

Citizen Involvement Day: Nominations Wanted

Do you know someone who volunteers in the community and should be recognized? The Bath Community Development Office and Citizen Involvement Day committee are accepting nominations for several award categories. This year celebrates the 11th Annual Bath Citizen Involvement Day, a community-building event that brings awareness about service organizations to the public and honors individuals and groups who work to benefit the City of Bath and its residents.

This year’s Citizen Involvement Day will be held on **Saturday, October 10th** from 10am to 1pm. Please take the time to show your appreciation for your neighbors, volunteers, and co-workers by nominating them for one of the following awards:

Citizen of the Year Award: *A Bath citizen who participates in numerous community organizations, reflecting outstanding service to the Bath community.*

Youth Award: *A youth, up to 21 years old, who has made an*

outstanding civic service to the Bath schools or community. Youth must reside or attend schools in Bath.

Community Project Award: *A notable project or organization that addresses Bath community needs in a positive, nurturing and significant way.*

Community Spirit Award: *A person or group that demonstrates vision, leadership, and steadfast commitment to projects that enhance our Bath community.*

To make a nomination for any of the above categories, please download a form from our website:

www.cityofbath.com/bath_communitydev.html

Forms are also available at City Hall in the Community Development Coordinator’s Office on the second floor. Deadline for nominations is September 25th, 2009. Send to nominations to: Citizen Involvement Day Awards, c/o Bath Community Development Office, 55 Front St., Bath, Maine, 04530. For questions, call Al Smith at 443-8372 or email clockwood@cityofbath.com.



POLICE *(continued from page 1)*

hard work of our Community Policing group and the men and women of the Bath Police Department. I am very proud of all of them."

CP2 PROGRAMS

• Community Speed Watch

Volunteers are directed by the police department to monitor neighborhoods based on complaints of speeding vehicles.

• Vacant House Watch

Volunteers check for visible signs of forced entry at unoccupied homes & cottages. All problems are reported to the Police Dept.

• Island House Watch

Teams of two volunteers check weekly on several island cottages. All problems are reported to the Police Dept.

• Harbor Safety Patrol

The patrols hand out information to boaters that suggests proper and safe boat handling in the harbor. They also monitor Bath's 4 miles of shoreline. The Harbormaster is notified of any problems.

• Crossing Guards

• Parking Enforcement

• Direct Traffic & Security during Special Events

• Administrative Help

Bath Community Police Partnership (CP2) is always looking for volunteers to join the group. Please contact Chairman Jim Gillies at 443-8339. For more detailed descriptions log on to: www.cityofbath.com. Go to "Police Department" then "Community Programs."

Grateful Bath Bus Riders

To the City of Bath,

We have enjoyed Bath during the last two days having arrived on Tuesday afternoon by boat. MMM [Maine Maritime Museum] welcomed us with their moorings and we have visited the museum grounds—all very wonderful. Today, we plan to visit again before departing down river toward Five Islands. We also enjoyed Downtown with its many shops.

Most of all, we enjoyed the people of Bath—all so friendly. In particular, one individual—Marvin [McKeown]. We had taken the City Bus back from City



Bath City Bus Driver, Marvin McKeown, reluctantly posing. Marvin says, "I was just doing my job."

Hall to the MMM—the 4:35/South Loop. Upon arriving on our boat, I noticed a missing wallet. I called the tel# 319-5195 (contact for Driver). The driver went back to the bus, searched the floor (having checked the seats earlier), found my wallet, called me on our cell phone, drove down to MMM, up to near the pier, & hand delivered my wallet. We thanked him as much as we could. He would take no (\$)

thanks of appreciation. He was just happy to help us.

Thank you City of Bath for our wonderful visit. We will spread the word.

Sincerely,

*Susan & Brian Schanning
Marblehead, Massachusetts*

The **Bath City Bus** runs seven days a week from 8am to 5:30pm with numerous stops throughout the City. Tickets are sold on the bus for \$1 each way or 12 tickets for \$10. Bus schedules and routes are available outside the Clerk's Office at City Hall or on the web at www.cityofbath.com/bath_bus.html. There are 13 scheduled stops on the North Loop and 8 on the South Loop. Riders can call the bus driver to request a pick up on a scheduled route. Call 319-5195 or 319-5272.

Bus Fact: Ridership from July 2008-June 2009=10,353

Bath's Autumnfest

Craft Show • Great Scarecrow Event • Tree Climbing
Live Music • Fire Truck Rides • Citizen Involvement Day
Pie Baking Contest • Free Trolley Rides • Scavenger Hunt
Tug-o-War • Art Activities • Raffles

Saturday, October 10

Changes and Accolades for Main Street Bath

The offices of Main Street Bath have moved to the recently restored Bath Train Station at 15 Commercial Street. The Main Street program was originated by the National Trust for Historic Preservation and focuses on revitalization of traditional downtowns to enhance the appearance and economic stability of the commercial district and to improve community pride and quality of life for residents and visitors. Bath was one of the first communities to achieve the "Main Street Community" status in 2001. Go to www.visitbath.com to learn more about Main Street Bath.

The Southern Midcoast Maine Chamber of Commerce reopened its Visitor Information Center at the Train Station. Hours are 9am - 4pm Sunday through Wednesday and 9am - 4pm Thursday through Saturday. For more information visit www.midcoastmaine.com.

And of course, Maine Eastern Railroad also has an office in the station. Their excursion trains run from Brunswick to Rockland and are running five days a week. For more information please visit their website www.maineeasternrailroad.com or stop by the station.



The Bath Train Station built in 1941, replaced the previous structure built in 1889, when the BIW shipyard facilities were expanded during World War II. The first train started from Bath on July 4, 1849. The Maine Central Railroad ceased passenger service to Bath in April, 1959. Bath Iron Works purchased the building in October, 1959, and it was used for various purposes, including a dental clinic, until it was transferred to the City of Bath in 1971 and restored in 2007. The Board poses during National Preservation Month in May.

Congratulations!

Meet Main Street's New Director



Many of you already know **Jennifer Geiger**, Main Street's new Director, since she's worked in Bath for almost 20 years. She was the Advertising Manager for the *Times Record* and later joined Briggs Advertising, where she handled cable TV sales and was an account manager. Jen was very involved with the Bath Business Association, Main Street Bath's predecessor, and has been on Main Street's Promotions Committee, serving as its chair for the last two years. She was elected to Main Street Bath's Board in 2008.

She also sings with the Oratorio Chorale, and served as its president from 1998 to 2000. During her term on the Board of

Directors of the Bath Area Family YMCA, she was chosen as the Volunteer of the Year in 2004. She served as President of the Rotary Club of Bath from 2005 to 2006, and has also served on the Board of the Chocolate Church Arts Center. Jen has a degree in Journalism from the Boston University School of Communication.



Main Street President Halcyon Blake and Main Street Board Member of the Year Susan Gillies at the Maine Downtown Conference in Rockland this June.

Congratulations are in order for Main Street Bath supporters and volunteers for winning top honors as 2009's **Outstanding Maine Street Maine Community** at the 9th Annual Maine Downtown Conference "Downtown Achievement Awards" ceremony on June 5th. Also singled out for recognition were **Bill Giroux**, *Outstanding Public Official*; **Susan Gillies**, *Board Member of the Year* for Main Street Bath, and **Eric Allen**, *Volunteer of the Year* for Main Street Bath.



Bath Train Park Project

Jim Upham AICP, *Planning Director*

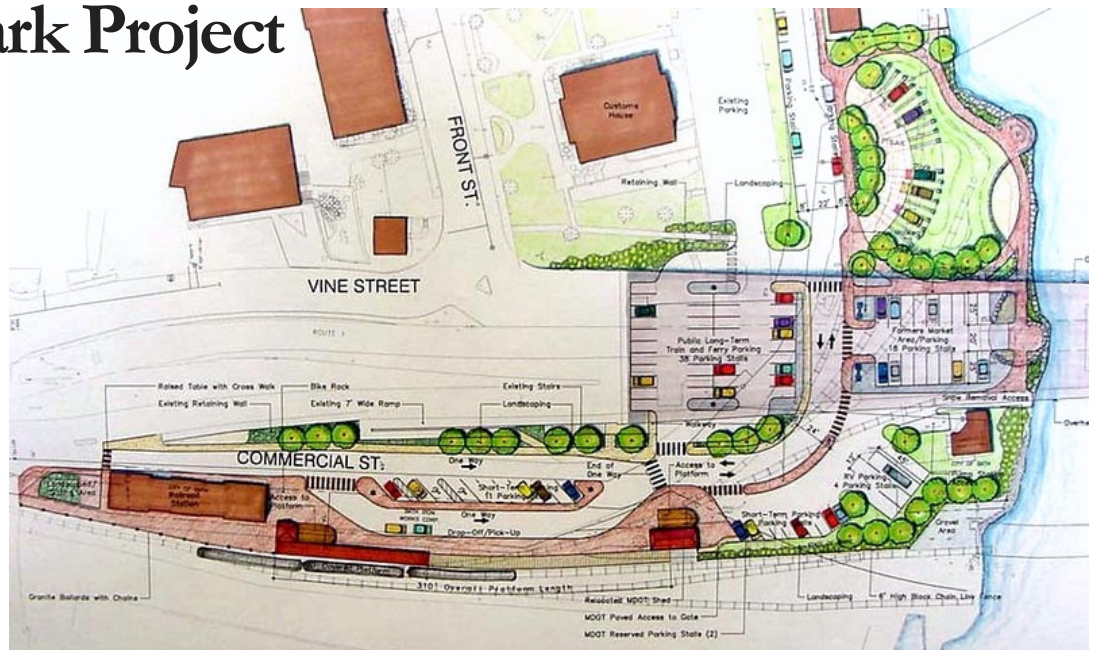
Back in the 1990s John Melrose, then Commissioner of the Maine Department of Transportation, had an idea that the State of Maine could prosper by promoting car-free vacations. This “Grand Plan” (later termed the *Maine Strategic Passenger Transportation Plan* and now simply referred to as “Explore Maine”) envisions visitors coming to Bangor or Portland via the airlines, leaving Bangor or Portland for the coast via existing bus or rail service, and moving along the coast via rail and/or the “marine highway.” If this plan is ever totally implemented, Bath is very well situated to become an important transportation hub and take advantage of its strategic location on Route 1, on the railroad, and on the Kennebec River.

In the late 1990s we received MaineDOT funding to begin the renovations of the Train Station. At the same time MaineDOT completed an assessment of Marine Highway port sites in Bath and other communities that could serve “Explore Maine.” The assessment determined that the City’s public landing at the Waterfront Park was the most appropriate location in Bath. Pieces of Bath’s participation in the “Explore Maine” concept were coming into place.

In 2003, we received funding from the MaineDOT to begin the planning of what we called the Bath Train Park. The goals of the project are multi-faceted: to complete the improvements to the area around the station (the funding for the station only included rehabbing the building); to improve the area around and under the Sagadahoc Bridge, and to link the Train Station both physically and visually to the Waterfront Park in order to support “Explore Maine.”

An advisory committee to help design the Train Park was created in 2003. Representation on the committee included the City Council, the Planning Board, Main Street Bath, the Farmers’ Market, Bath Fuel Company, BIW, Bath Savings Institution, Bath Water District, and the City’s Parks department and Public Works department. We hired a landscape architectural firm to assist us.

The design, which went all the way to engineering plans, includes improvements to the parking areas east of the station and under the Sagadahoc Bridge, safer parking and drop-off for the station and the station’s tenants, walkways, a bike lane that is part of the East



Conceptual drawing of the Bath Train Park showing new green spaces, trees and plantings, walkways and parking.

Coast Greenway’s connection to the Sagadahoc Bridge, additional parking under the bridge, and daytime parking for the motor homes and RVs that are here in town for a visit but can’t find parking spaces large enough. The speed of vehicles on Commercial Street will be decreased by proper “traffic calming” techniques.

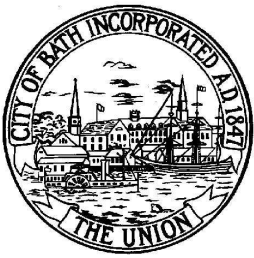
When completed later this year the area will finally look finished. There will be additional parking, parking for the station will be safer, Commercial Street will be safer, and we will have the beginning of the walkway that will connect the station to the Waterfront Park.

The next step is to design and build the improvements in the vacant area directly north of the bridge, and design and build the sidewalks and pathways that will finally connect the Train Station both physically and visually to the Waterfront Park.

Thank you Bath VFW!

Darren Delano, work-leader in the Cemeteries and Parks division, is putting the final touches on the eagle on the top of the new 80-foot flagpole in front of Patten Free Library. The **Bath VFW** generously donated the pole, eagle, and labor. The VFW has also donated flagpoles at Elmhurst, Bath Middle School, and Morse High School.





Bath City Hall
55 Front St.
Bath, ME 04530

U.S. Postage Paid
City of Bath
Bath, ME 04530
Permit No. 5

ECRWSS

Postal Patron
Bath, ME 04530

8

~ *The City Of Ships* ~



Silver bugle presented to R.W. Twitchell, leader of the Bath Brass Band in 1851. The bugle has surfaced at City Hall and we hope to have a case built to display the horn and all of the news clippings describing the presentation.

Page 1 (top) copyright www.robinsonphotoart.com

The *City of Ships* newsletter

For questions, comments and other inquiries about the newsletter, please contact Carolyn Lockwood at

443-8330 x223 or by email at
clockwood@cityofbath.com.



Silver Bugle Returns to Bath

In April of 1851, Reuben Wilder Twitchell was presented with a silver bugle by the citizens of Bath and the Bath Brass Band in recognition of his leadership of the Band. The bugle recently found its way back to Bath after Twitchell's great-great grandson, Blake Hamilton, from Yuma, Arizona, decided it would be better appreciated in Bath than remaining in his closet as it had been for the last 50 years. "The only condition we have is that the Bugle **never** be sold," wrote Mr. Hamilton.

Inscribed in gold on the bugle are the words: "Presented to R.W. Twitchell as a token of respect by the citizens of Bath and the members of the Bath Brass Band, April 10th, 1851, E.G. Wright, Maker, Boston." The bugle was presented to Twitchell by Hon. Henry Tallman, who served as Maine's Attorney General from 1849-1853, and, in 1869, dedicated the Sagadahoc County Courthouse. In 1851, he was a judge of the Bath Municipal Court.

Twitchell joined the band of the 1st Massachusetts Volunteer Infantry in May of 1861. After being discharged later that year, he re-enlisted in 1863 as a band leader, 2 Brigade, 1st Division, 20th Army Corps to General Sherman, in Sherman's "March to the Sea" through Georgia.