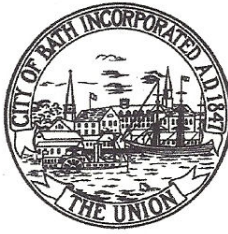


**CITY OF BATH, MAINE**

City Hall 55 Front Street  
Bath, Me 04530

[www.cityofbath.com](http://www.cityofbath.com)

**CODES ENFORCEMENT OFFICE**

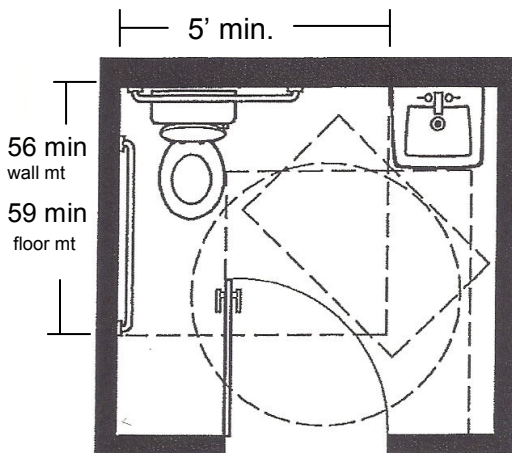
Phone (207) 443-8334

FAX (207) 443-8337

TDD (207) 443-8368

## HANDICAPPED ACCESSIBLE BATHROOMS

Below are design details from the 2010 Americans with Disabilities Act for public use bathrooms in commercial/public buildings. These are for facilities for adults. The specs for children's bathrooms are different. There are exceptions to these rules for private use bathrooms, such as those off a private office. Let us know if you have questions or need further information.

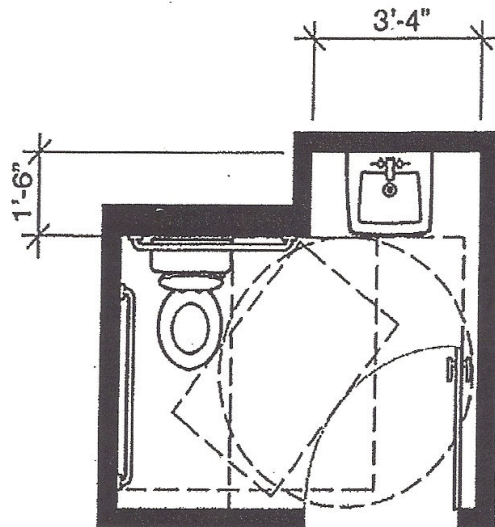


**Plan-2B: 2010 Standards Minimum with In-Swinging Door**

**7'-0" x 6'-6" 45.50 Square Feet**

This plan shows a typical example of a single-user toilet room that meets the minimum requirements of the 2010 Standards when the entry door swings into the room. In the 2010 Standards an exception allows the entry door to swing over the clear floor spaces and clearances required at the fixtures if a clear floor space complying with section 305.3 (minimum 30 inches by 48 inches) is provided outside the arc of the door swing, section 603.3.3 exception 2. The required maneuvering space for the door, section 404.2.4.1 and Figure 404.2.4.1(a), also is a factor in room size. This clear space cannot be obstructed by the plumbing fixtures. Note that this layout provides more space for turning when the door is closed than Plan-1B.

Room must have a 5' diameter turning circle, clear of obstructions. The door can swing over the circle if there is a 30" x 48" "parking space" outside the door swing.

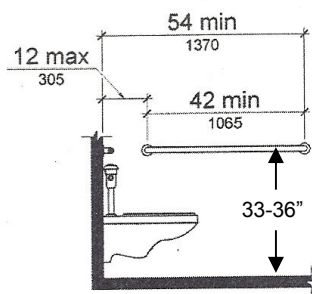


**Plan-2C: 2010 Standards Minimum with In-Swinging Door**

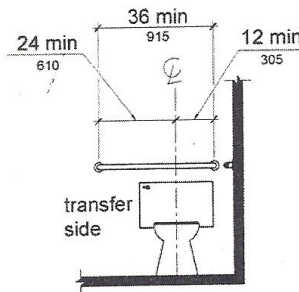
**7'-0" x 6'-6" 40.00 Square Feet**

(plumbing chase not included)

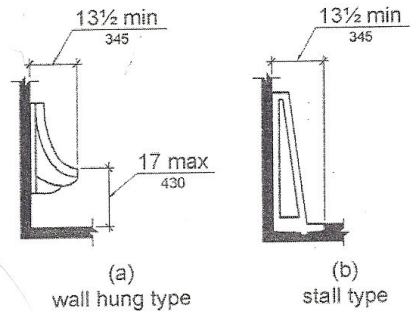
This plan shows the same typical features of a single-user toilet room that meets the minimum requirements of the 2010 Standards as Plan-2B when the entry door swings into the room. Note that this layout also provides more space for turning when the door is closed than Plan-1B.



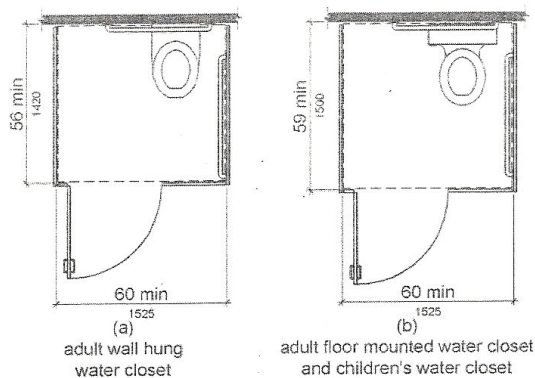
**Figure 604.5.1**  
Side Wall Grab Bar at Water Closets



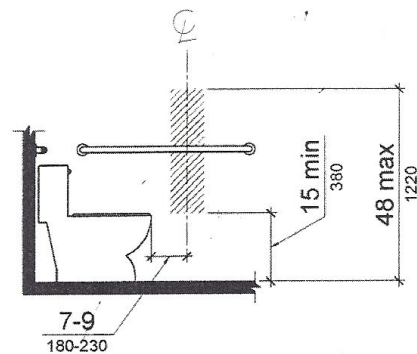
**Figure 604.5.2**  
Rear Wall Grab Bar at Water Closets



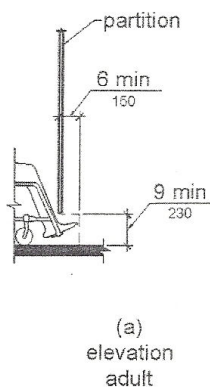
**Figure 605.2**  
Height and Depth of Urinals



**Figure 604.8.1.1**  
Size of Wheelchair Accessible Toilet Compartment

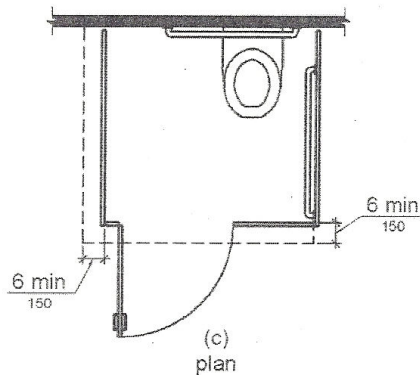


**Figure 604.7**  
Dispenser Outlet Location



Stall partitions must have toe clearance as shown here for the front and at least one side wall except:

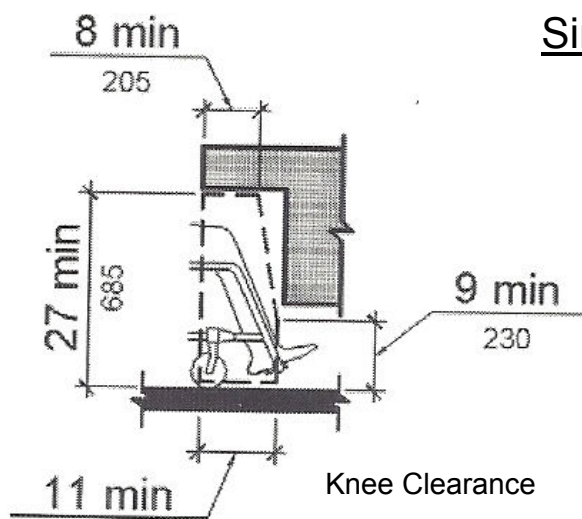
The front wall clearance is not needed if the stall is at least 62" deep for a wall hung toilet or 65" deep for a floor mounted toilet. The side partition toe clearance is not required if the stall is at least 66" wide.



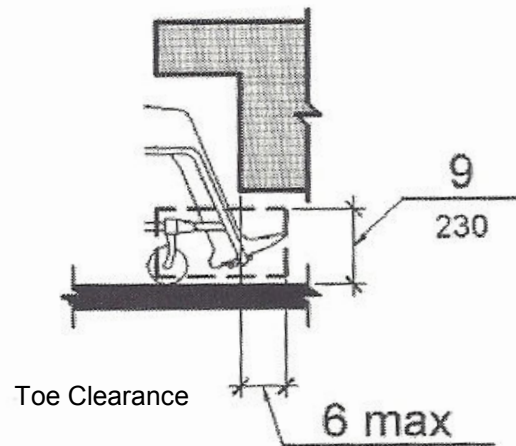
604.4 Toilet seats shall be between 17" and 19" above the floor and shall not be spring loaded.

604.8.3 Coathooks shall be between 15" and 48" above the floor.

604.6 Flush controls shall be on the access side of the toilet. (Note: Toilets usually have the flush handle on the left side of the toilet, as you look at it. Make sure the toilet you buy has the handle on the correct side for an accessible toilet enclosure.)



## Sinks



606.2 Sinks shall be installed so as to give the knee and toe clearances shown above, for a width of at least 30", centered on the sink.

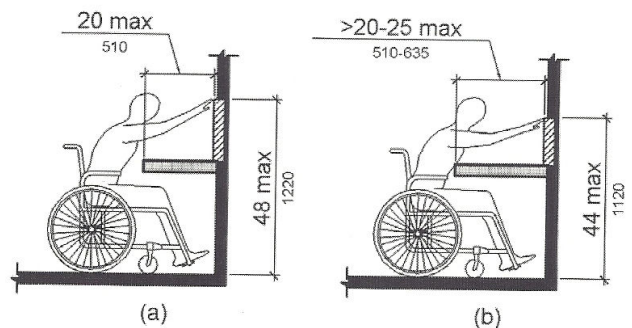


Figure 308.2.2  
Obstructed High Forward Reach

- 606.3 Sinks shall be installed so as to give the reach range shown above. The top of the sink, or counter if the sink is set into/below the level of the counter, shall be no higher than 34" above the floor.
- 606.4 The faucet controls shall be able to be operated with one hand, with shall not require tight grasping, pinching, or twisting\*, and shall require no more than 5 pounds of force.
- \* *ADA rule of thumb: If you can operate it with a closed fist, it probably meets the ADA.*
- 606.5 Water supply and drain pipes shall be insulated, or otherwise configured so as to prevent contact. There shall be no sharp or abrasive surfaces beneath sinks.
- 603.3 Mirrors located above sinks or countertops shall be installed with the bottom edge of the reflecting surface no more than 40" above the floor. Mirrors installed elsewhere shall be installed with the bottom edge of the reflecting surface no more than 35" above the floor.

This handout is an edited summary to give the basic requirements for accessible toilet room features in places like stores, offices, restaurants, etc.. There are different rules for residential occupancies, and facilities for children. For clarification or further information, the entire ADA and lots of information about it can be seen at [www.ada.gov](http://www.ada.gov).