



555 East Loockerman St.  
Dover, Delaware 19901

McGinnis Commercial Real Estate

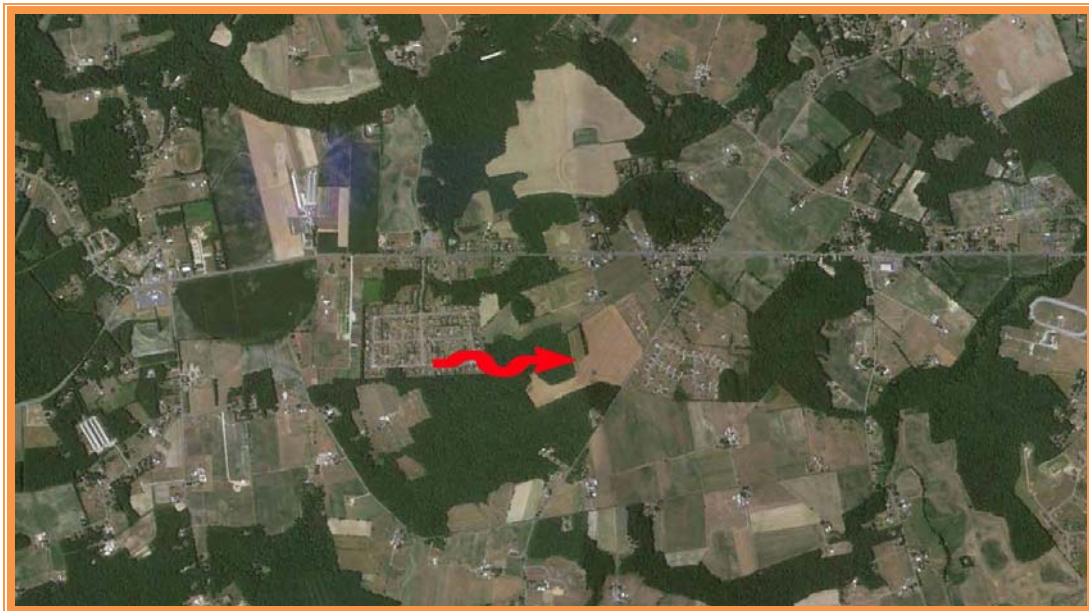
Phone: 302.736.2710 Fax: 302.736.2715

www.mcginnisrealty.com

GREEN FARM NAULT ROAD PROPERTY  
NAULT ROAD \* DOVER, KENT COUNTY, DELAWARE 19904  
OFFICE FILE # 213179 \* MLS # 6184458



SALE PRICE \$499,900 \* \$9,000 +/- PER ACRE LAND AREA



ALL INFORMATION SUBMITTED SUBJECT TO ERRORS AND MODIFICATIONS.  
ALL INFORMATION CONTAINED HEREIN OBTAINED FROM RELIABLE SOURCES BUT NOT GUARANTEED.  
PROSPECTIVE PURCHASERS SHOULD VERIFY ALL INFORMATION SUBMITTED.  
LISTING BROKERAGE REPRESENTS SELLER \* PAGE 1 OF 6 PAGES

**Tax Map Identification** ED00 - 074.00 - 02 - 15.00

**Deed Reference** D683 - 291

**Zoning** AC, AGRICULTURE CONSERVATION, KENT COUNTY

**Census Tract** 418.02

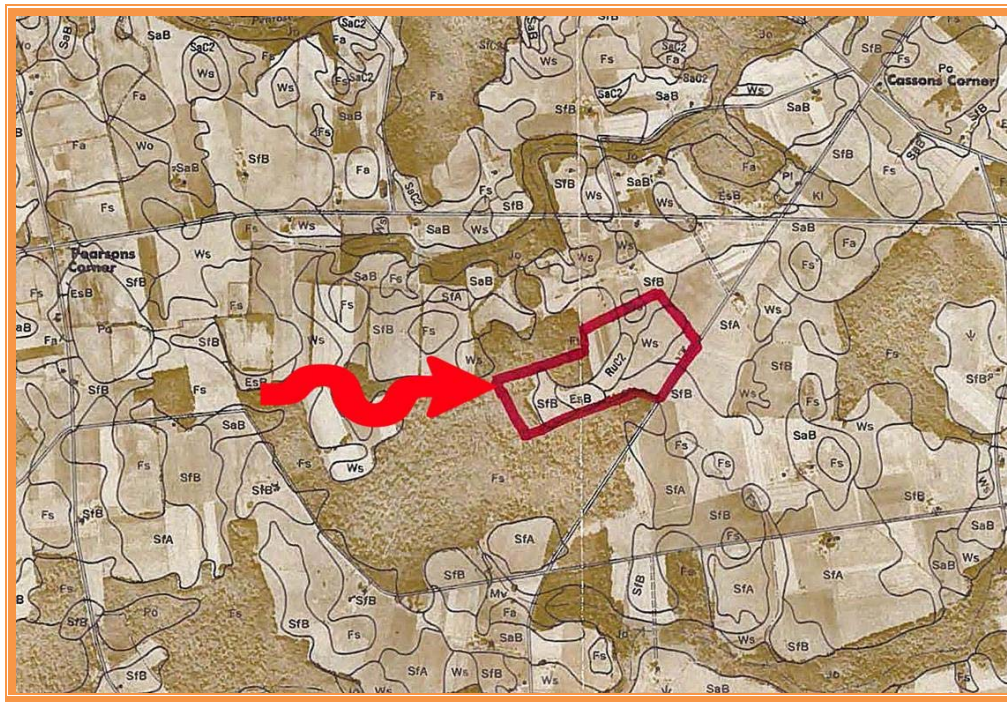
**Flood Hazard Map** 10001C0163H; Zone X; May 5, 2003

<b>Land Area</b>		2,420,159	sq ft +/-	55.559	acres +/-
<b>Frontage</b>	766.85	ft +/-			
<b>Depth</b>	1,028.80	ft +/-			
<b>TILLABLE ACREAGE</b>	40.69	acres +/-	73.24%		

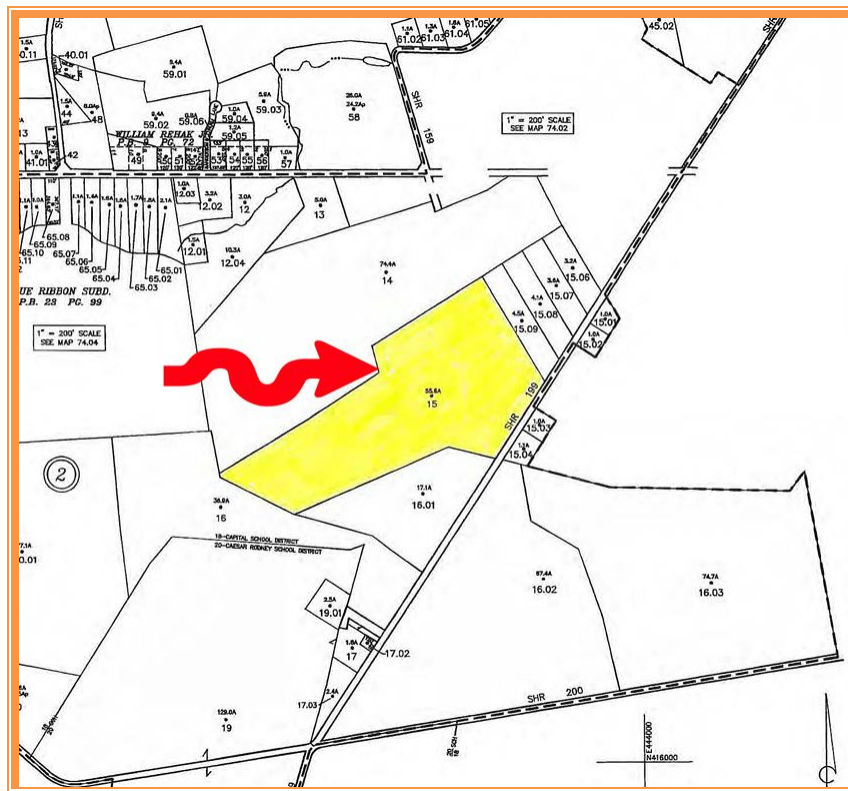
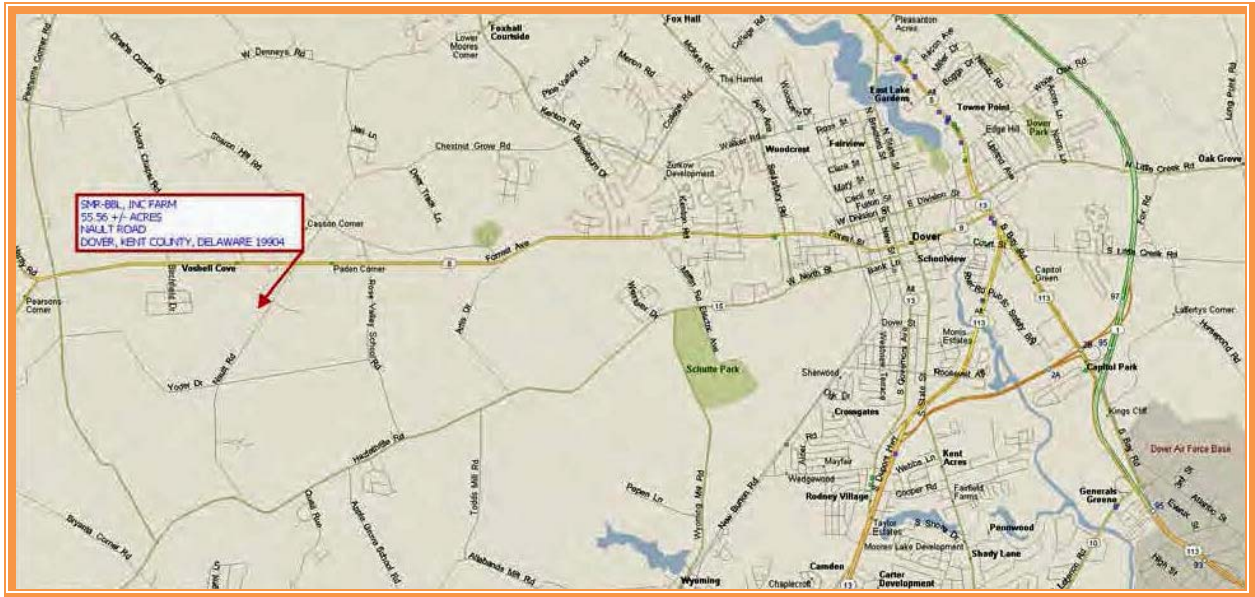
<b>City Tax Assessment</b>	<b>Per Acre</b>	<b>Rate</b>	<b>Tax</b>	<b>Per Acre</b>
\$0	\$0.00	\$0.650	\$0.00	\$0.0000

<b>County Tax Assessment</b>	<b>Per Acre</b>	<b>Rate</b>	<b>Tax</b>	<b>Per Acre</b>
\$21,200	\$381.57	\$2.3792	\$504.39	\$9.0784

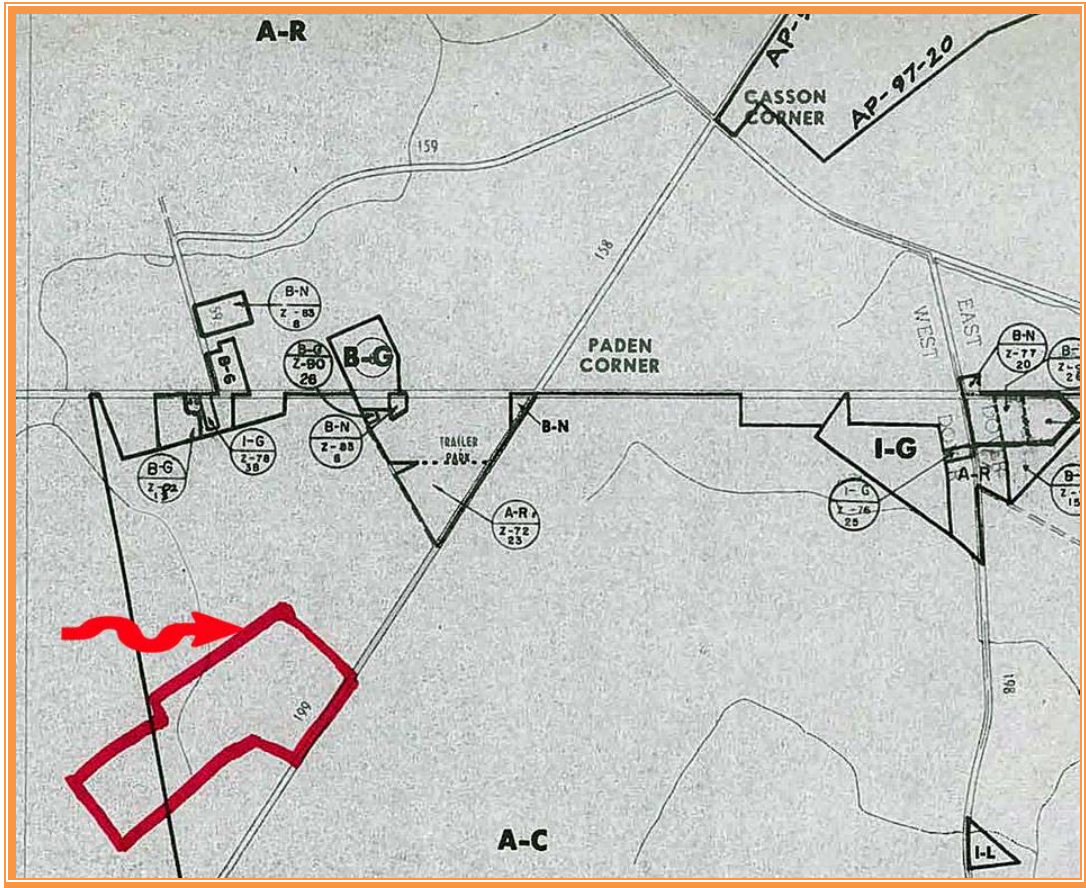
**TOTAL PROPERTY TAX** \$504.39 \$9.0784



**ALL INFORMATION SUBMITTED SUBJECT TO ERRORS AND MODIFICATIONS.  
ALL INFORMATION CONTAINED HEREIN OBTAINED FROM RELIABLE SOURCES BUT NOT GUARANTEED.  
PROSPECTIVE PURCHASERS SHOULD VERIFY ALL INFORMATION SUBMITTED.  
LISTING BROKERAGE REPRESENTS SELLER \* PAGE 2 OF 6 PAGES**



**ALL INFORMATION SUBMITTED SUBJECT TO ERRORS AND MODIFICATIONS.  
ALL INFORMATION CONTAINED HEREIN OBTAINED FROM RELIABLE SOURCES BUT NOT GUARANTEED.  
PROSPECTIVE PURCHASERS SHOULD VERIFY ALL INFORMATION SUBMITTED.  
LISTING BROKERAGE REPRESENTS SELLER \* PAGE 3 OF 6 PAGES**



**ALL INFORMATION SUBMITTED SUBJECT TO ERRORS AND MODIFICATIONS.  
ALL INFORMATION CONTAINED HEREIN OBTAINED FROM RELIABLE SOURCES BUT NOT GUARANTEED.  
PROSPECTIVE PURCHASERS SHOULD VERIFY ALL INFORMATION SUBMITTED.  
LISTING BROKERAGE REPRESENTS SELLER \* PAGE 4 OF 6 PAGES**





United States Department of Agriculture  
Kent County Farm Service Agency

FARM: 4741 TRACT: 7450  
CROPLAND ACRES: 40.7



**Legend**

GIS\_DE.SDE.Wet\_P\_de001

Wetland Determination Identifiers

- Restricted Use
- ▽ Limited Restrictions
- Exempt from Conservation Compliance Provisions

GIS\_DE.SDE.clu\_a\_de001



Prepared by Kent, DE FSA

Date:

December 02, 2011

**ALL INFORMATION SUBMITTED SUBJECT TO ERRORS AND MODIFICATIONS.  
ALL INFORMATION CONTAINED HEREIN OBTAINED FROM RELIABLE SOURCES BUT NOT GUARANTEED.  
PROSPECTIVE PURCHASERS SHOULD VERIFY ALL INFORMATION SUBMITTED.  
LISTING BROKERAGE REPRESENTS SELLER \* PAGE 6 OF 6 PAGES**