

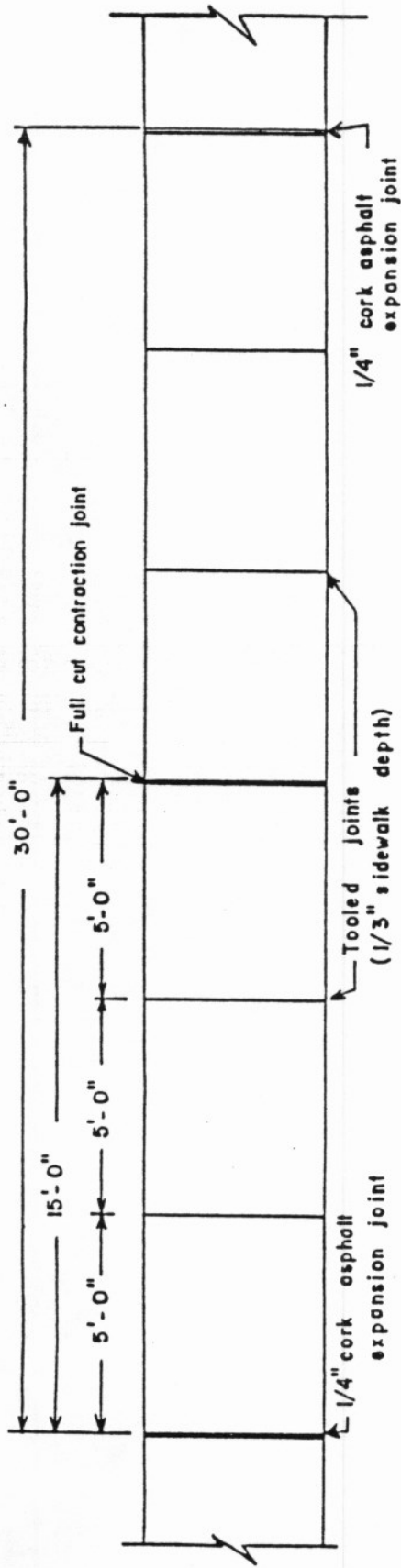
TOWN OF EAST HADDAM
TYPICAL ROADWAY CROSS-SECTION

NOTES:

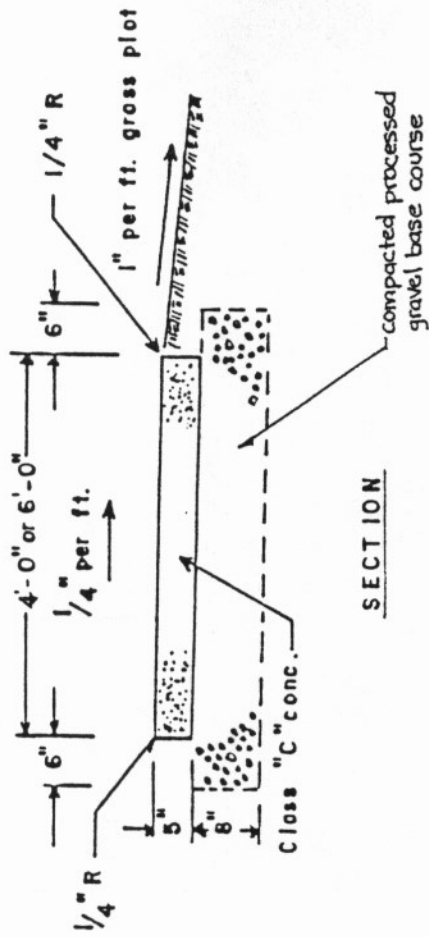
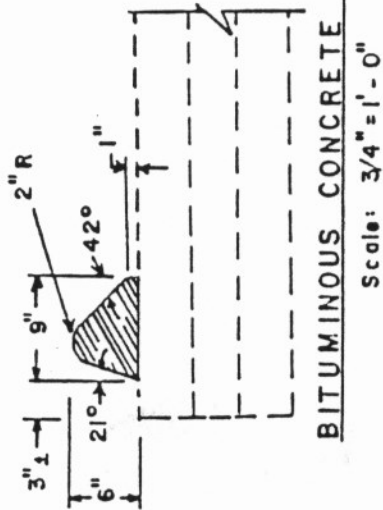
1. - All utilities shall be underground where possible
2. - Sidewalks are to be provided, where required
3. - All material thicknesses are for compacted depth

NOT TO SCALE

PLATE No. 1



SIDEWALK
Scale 1/4" = 1'-0"



SECTION

TOWN OF EAST HADDAM
**SIDEWALK AND CURB
DETAILS**

CUL-DE-SAC WITH CENTER ISLAND

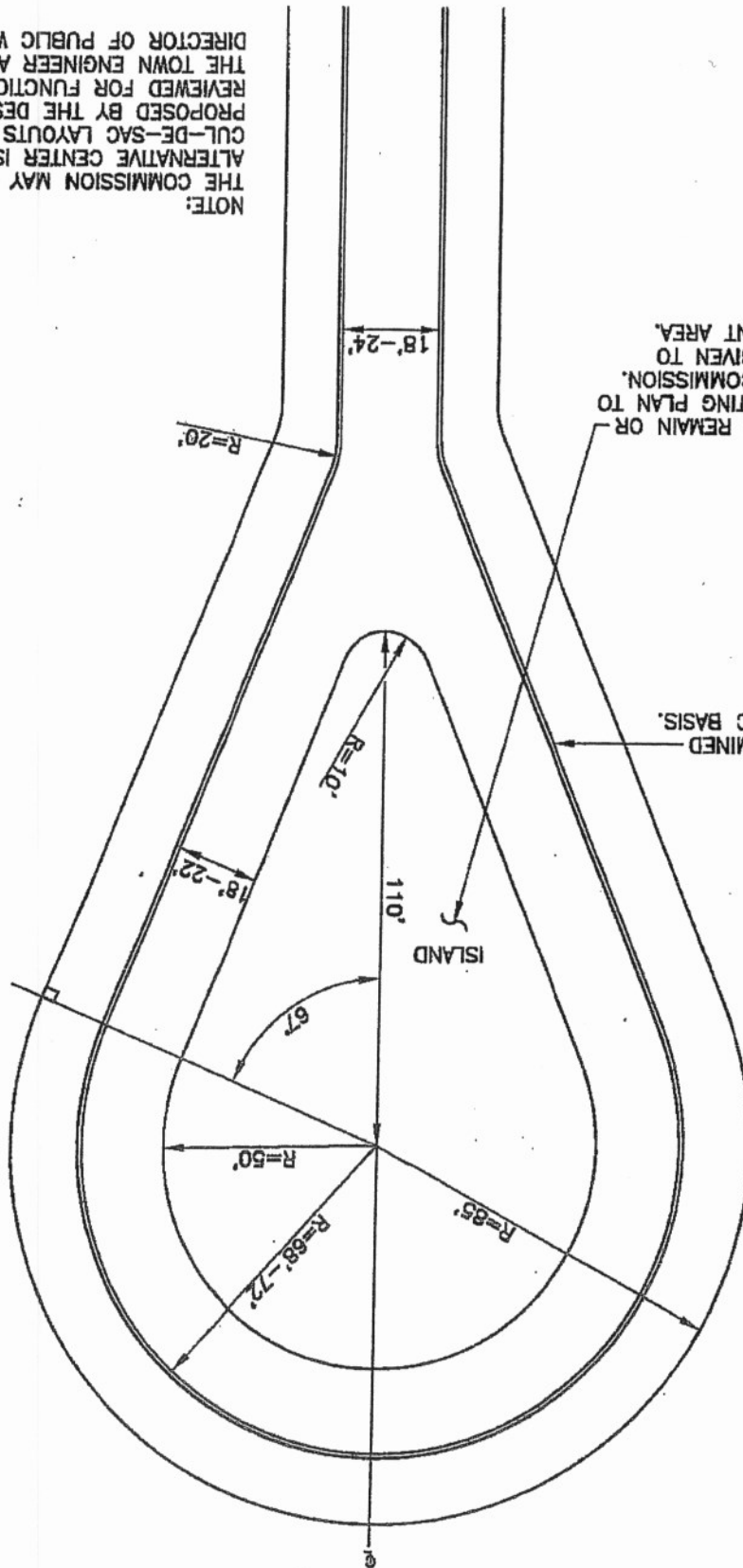
STANDARD DETAIL DRAWING

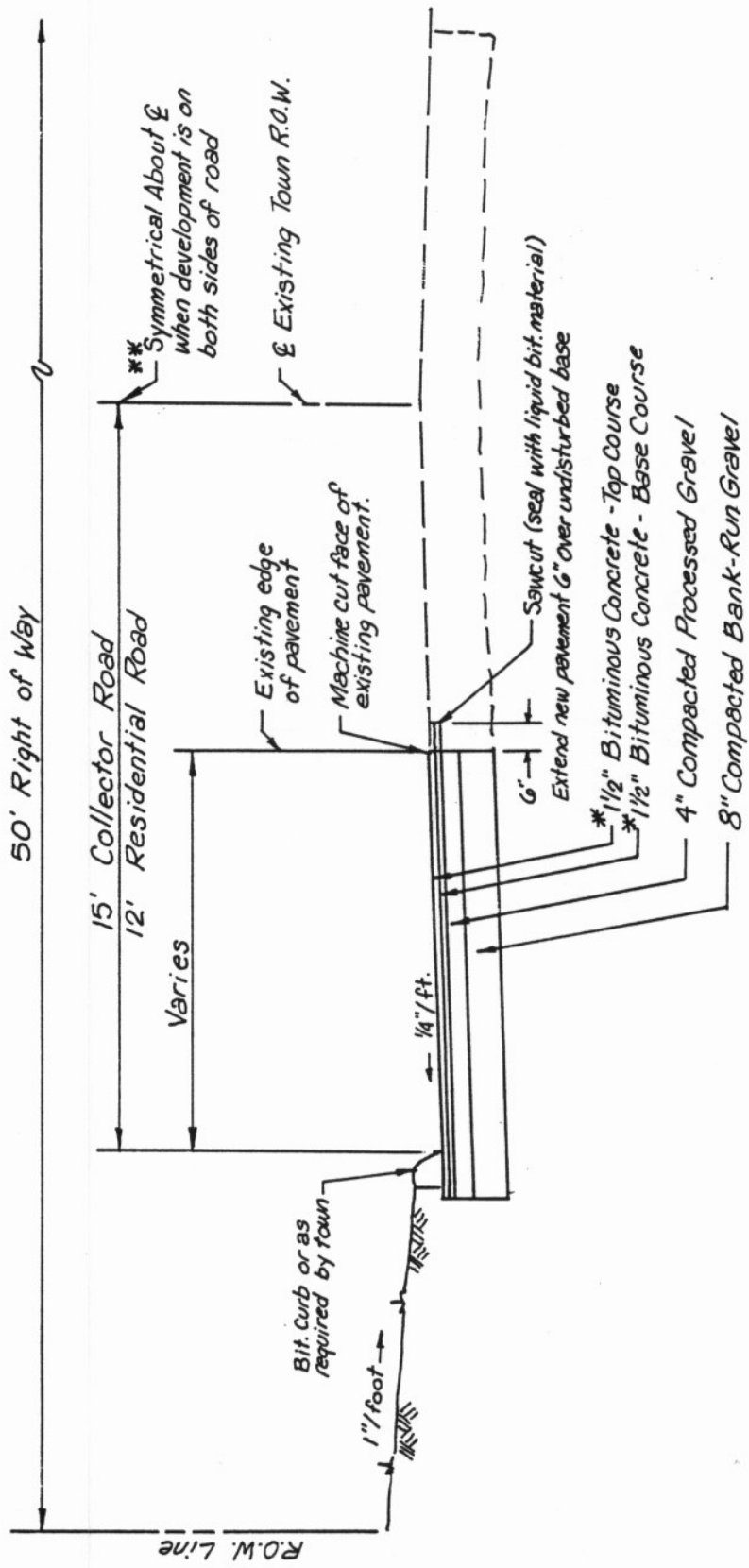
EAST HADDAM
PUBLIC IMPROVEMENT
SPECIFICATIONS

NOTE:
THE COMMISSION MAY CONSIDER
ALTERNATIVE CENTER ISLAND
CUL-DE-SAC LAYOUTS AS
PROPOSED BY THE DESIGNER AND
REVIEWED FOR FUNCTIONALITY BY
THE TOWN ENGINEER AND THE
DIRECTOR OF PUBLIC WORKS.

NATURAL VEGETATION TO REMAIN OR
LOW MAINTENANCE PLANTING PLAN TO
BE APPROVED BY THE COMMISSION.
CONSIDERATION TO BE GIVEN TO
STORMWATER MANAGEMENT AREA.

CURBING TO BE DETERMINED
ON A PROJECT SPECIFIC BASIS.





* Liquid asphalt surface in two applications, when development is less than 10 lots, on both sides of existing road.
 Surface to be provided by Town when development is less than 10 lots on one side of Collector Road, and developments of 2 lots or more on one side of Residential Road.

** For development on both sides, widening to be performed on both sides

TOWN OF EAST HADDAM
 IMPROVEMENT TO EXISTING TOWN ROAD

NOT TO SCALE

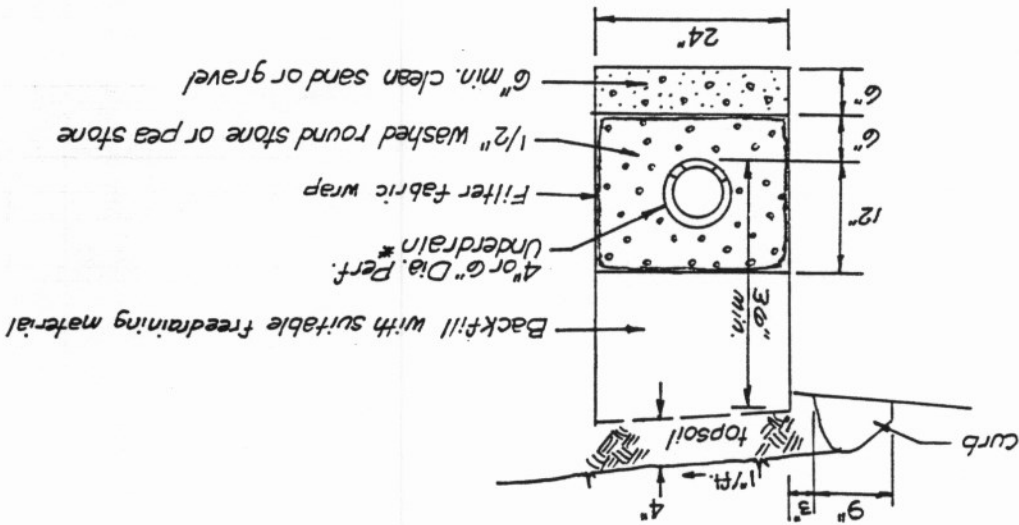
TYPICAL UNDERDRAIN DETAIL

TOWN OF EAST HADDAM

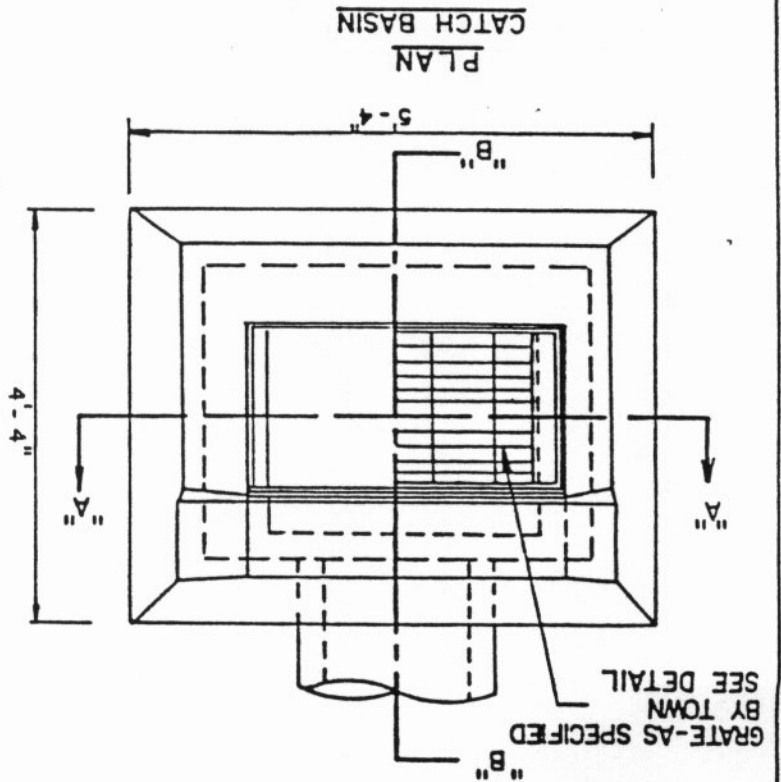
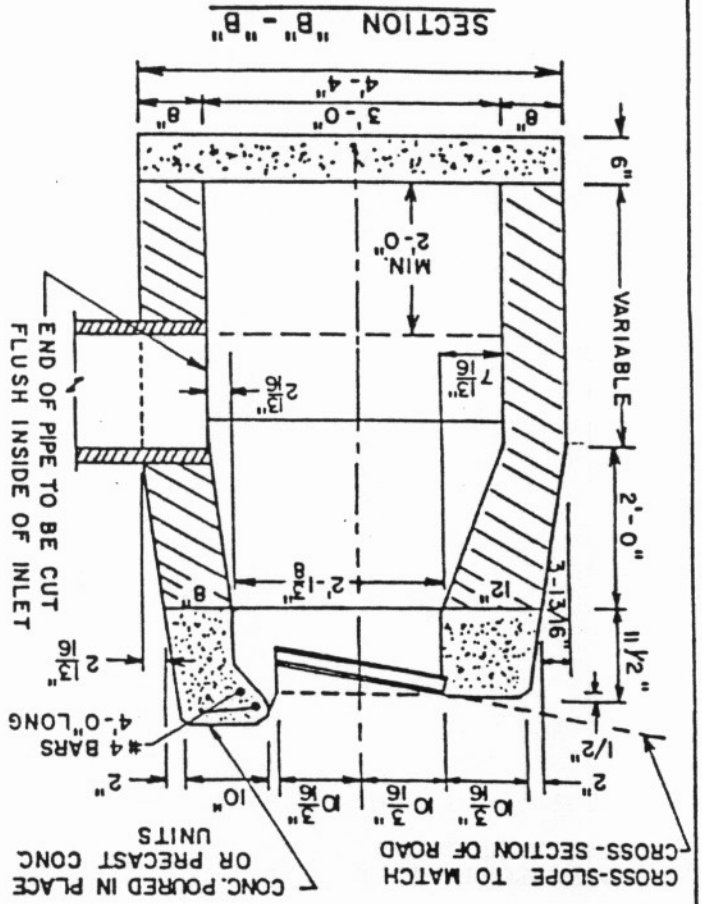
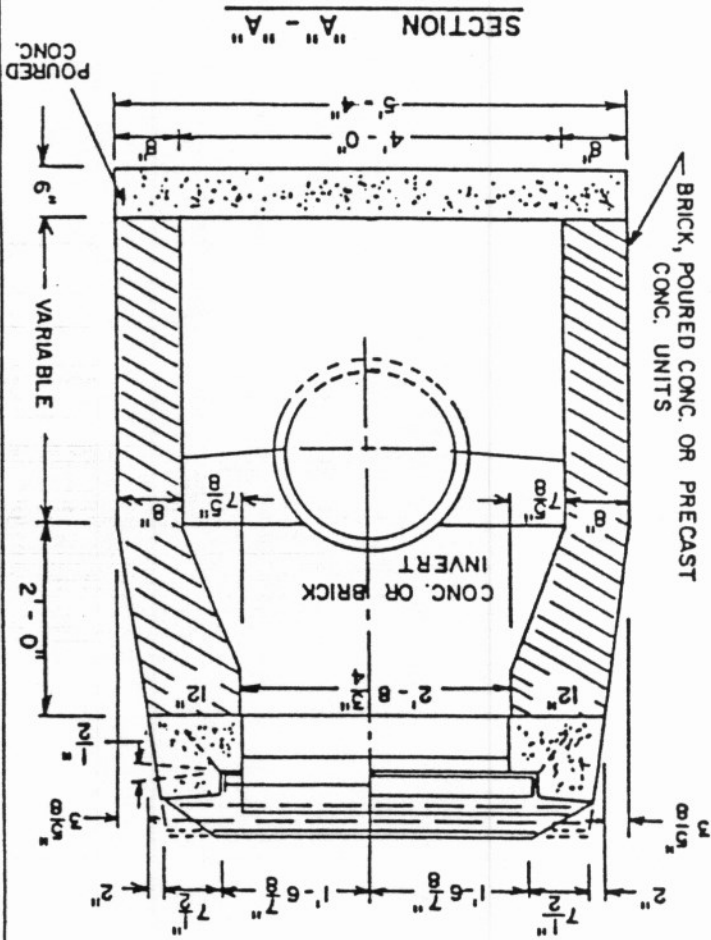
- 1. Perforations to be placed down
- 2. Holes to be 1/4" dia. or 3/8" dia.

NOTES:

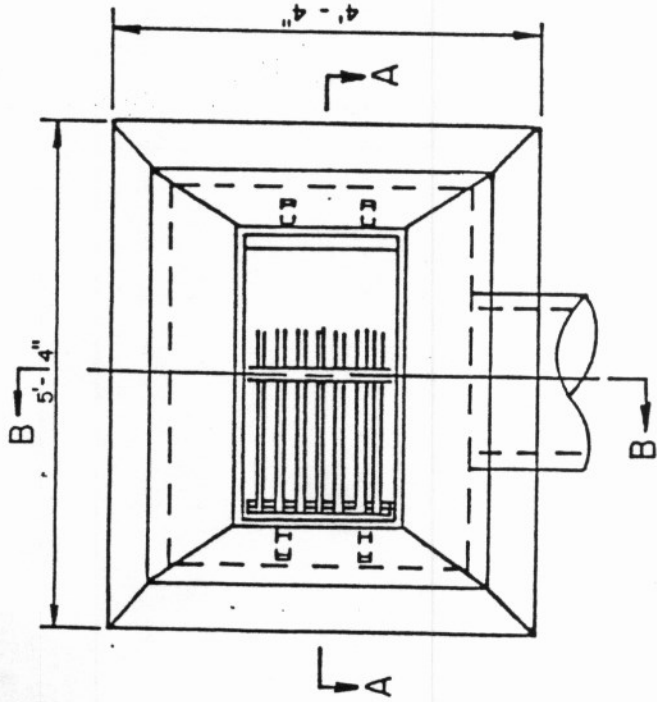
* If slotted storm drain pipe culverts are used, slots should face up.



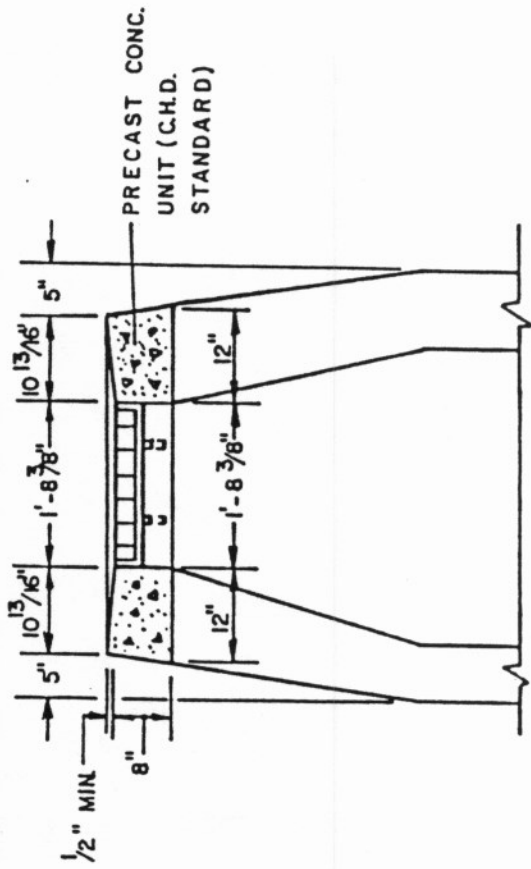
TYPE "C" CATCH BASIN



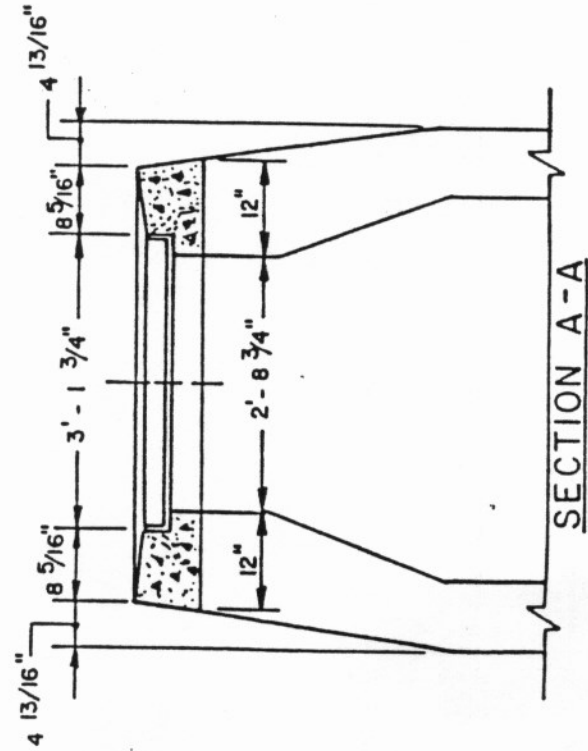
GRATE-AS SPECIFIED BY TOWN SEE DETAIL



PLAN



SECTION B-B



SECTION A-A

NOTE:
FOR DETAILS & DIMENSIONS OF LOWER
SECTION, SEE "TYPE C CATCH BASIN"

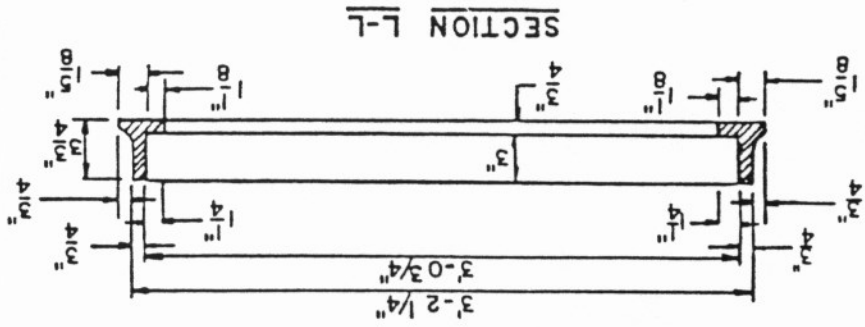
TOP OF TYPE "C-L"
CATCH BASIN

NOT TO SCALE

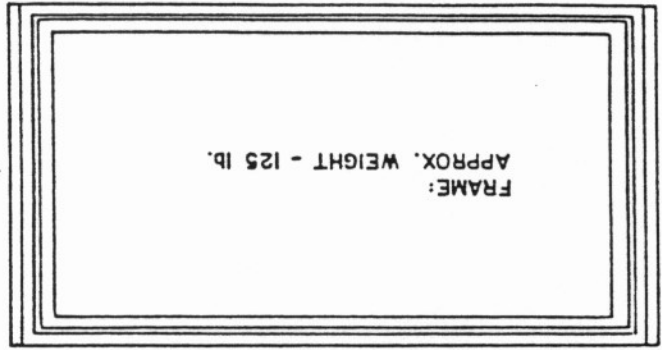
**CAST IRON CATCH
BASIN FRAME
& GRATE**

PLATE No.8

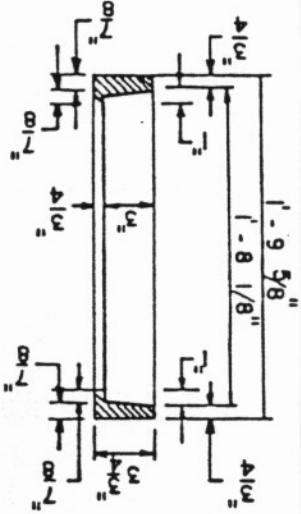
CAST IRON FRAME



FRAME:
APPROX. WEIGHT - 125 LB.



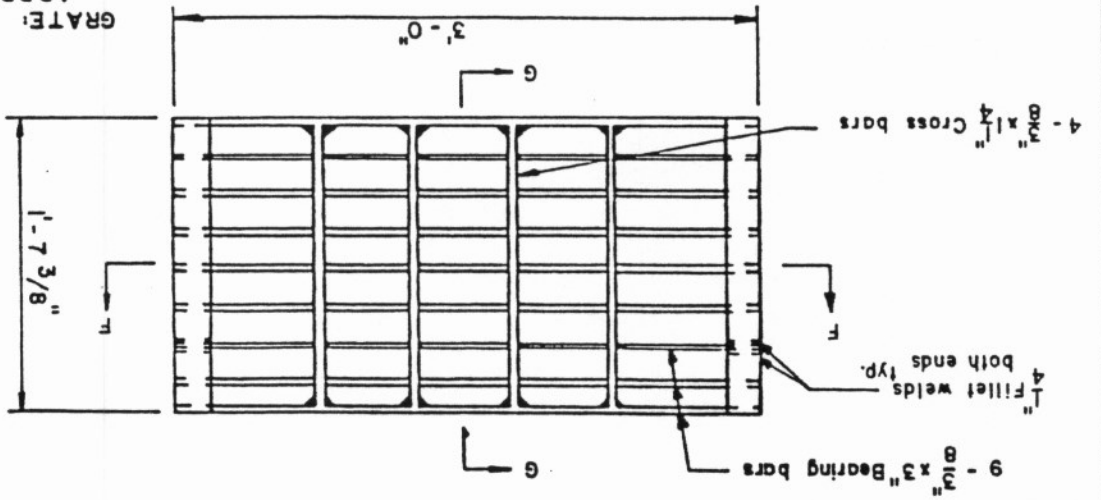
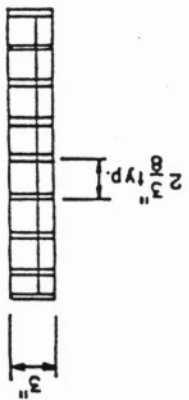
SECTION K-K



STEEL GRATE

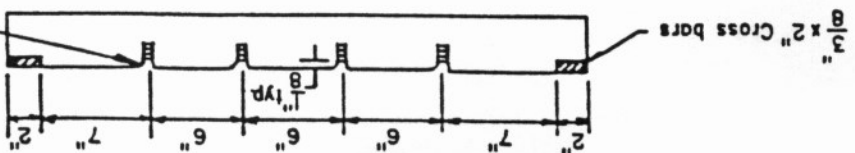
GRATE:
APPROX. WEIGHT - 119 LB.

SECTION G-G



SECTION F-F

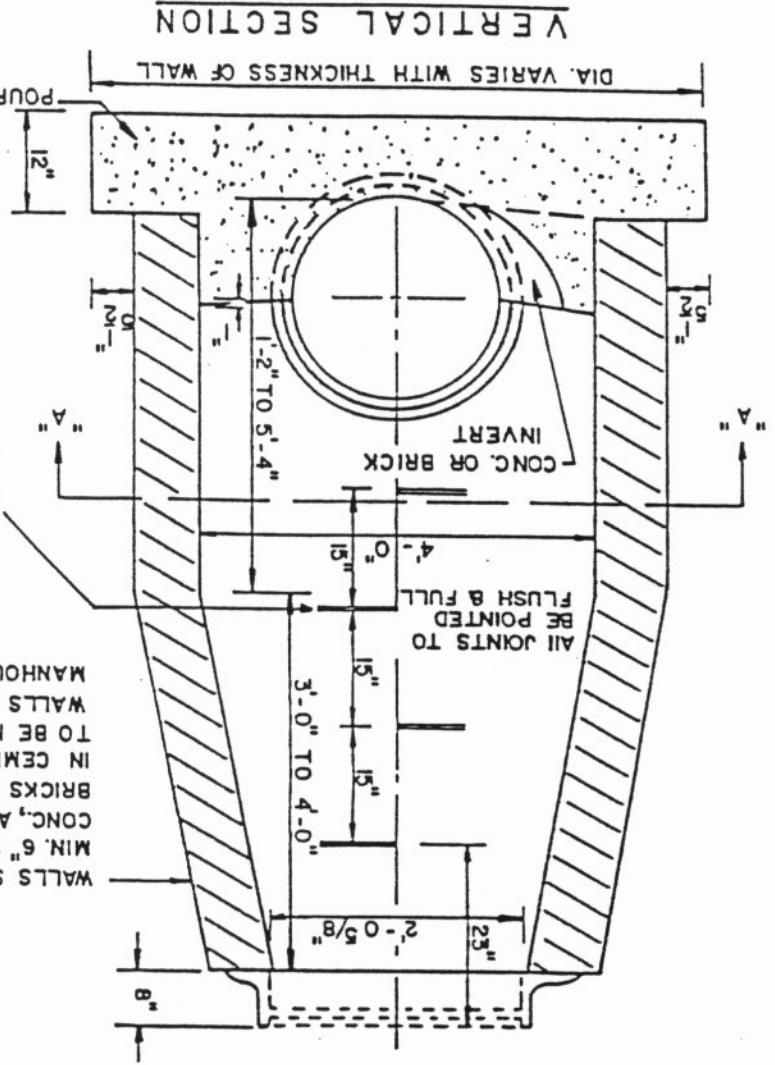
Bearing bars to be notched
Cross bars to be notched



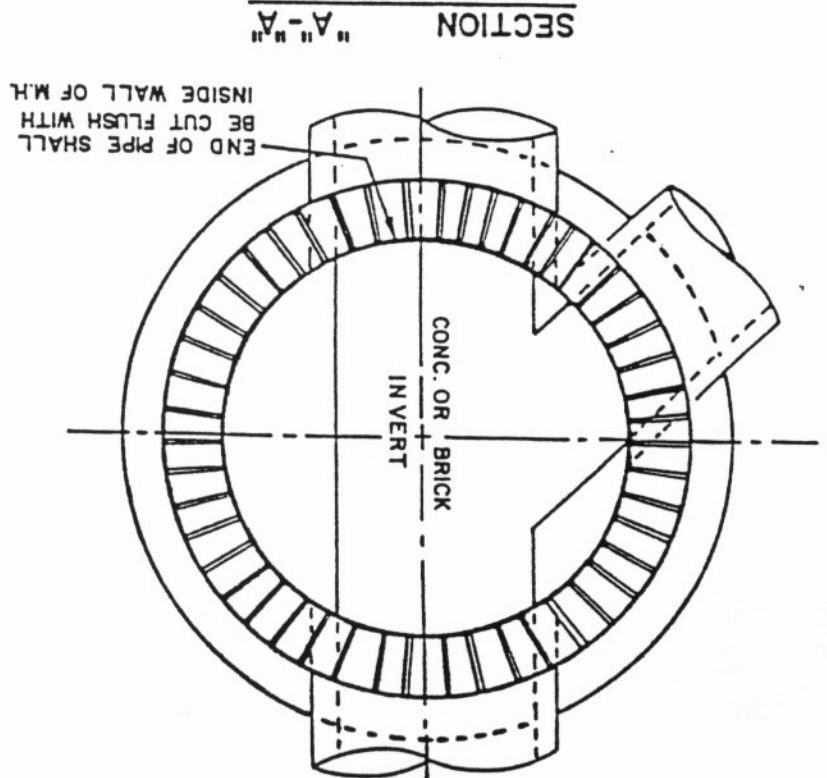
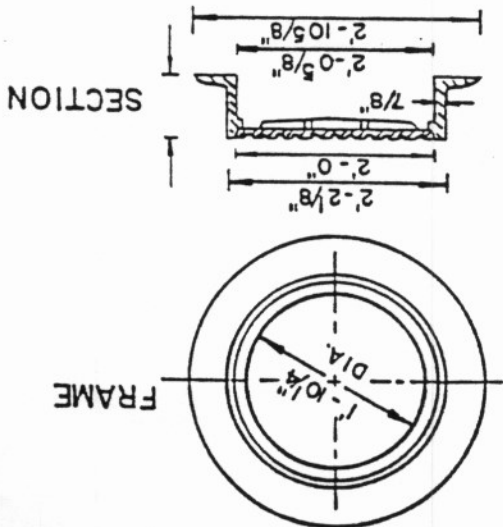
STORM MANHOLE TYPE "A"

MANHOLE STEPS TO BE SIMILAR TO OR EQUAL TO ALCOA ALUMINUM NO. 12653

WALLS SHALL BE BUILT MIN. 8" WITH BRICK, MIN. 6" WITH PRECAST CONC. UNITS & POURED CONC., AT THE OPTION OF THE CONTRACTOR. BRICKS & PRECAST CONC. UNITS TO BE LAID IN CEMENT SAND MORTAR 1:2 MIX, JOINTS TO BE NOT OVER 1/4" ON INSIDE FACE. WALLS SHALL BE 12" THICK WHEN DEPTH OF MANHOLE IS GREATER THAN 10'

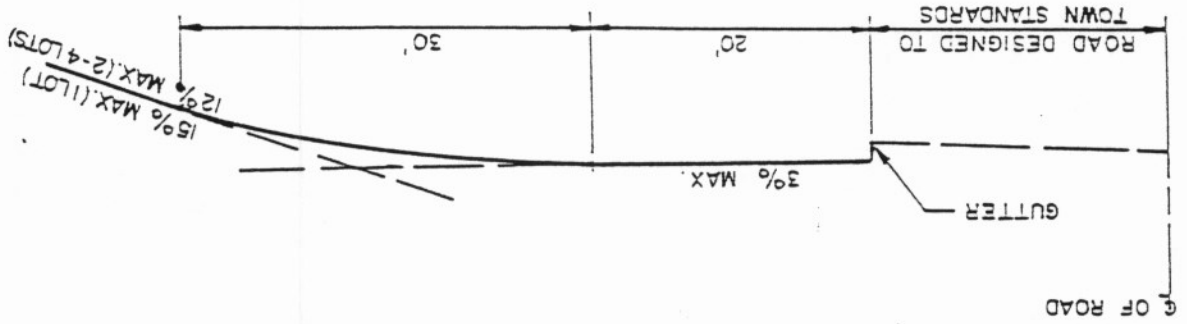


STANDARD FRAME & COVER
WEIGHT 360 LBS.

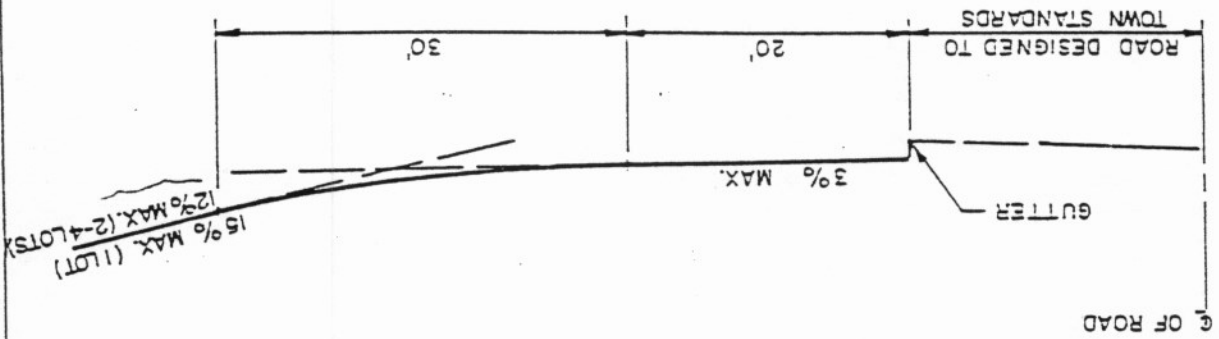


RESIDENTIAL DRIVEWAY DETAILS

PROFILE - CREST CURVE IN DRIVE



PROFILE - SAG CURVE IN DRIVE



PLAN

