



555 East Lookerman St.
Dover, Delaware 19901

McGinnis Commercial Real Estate

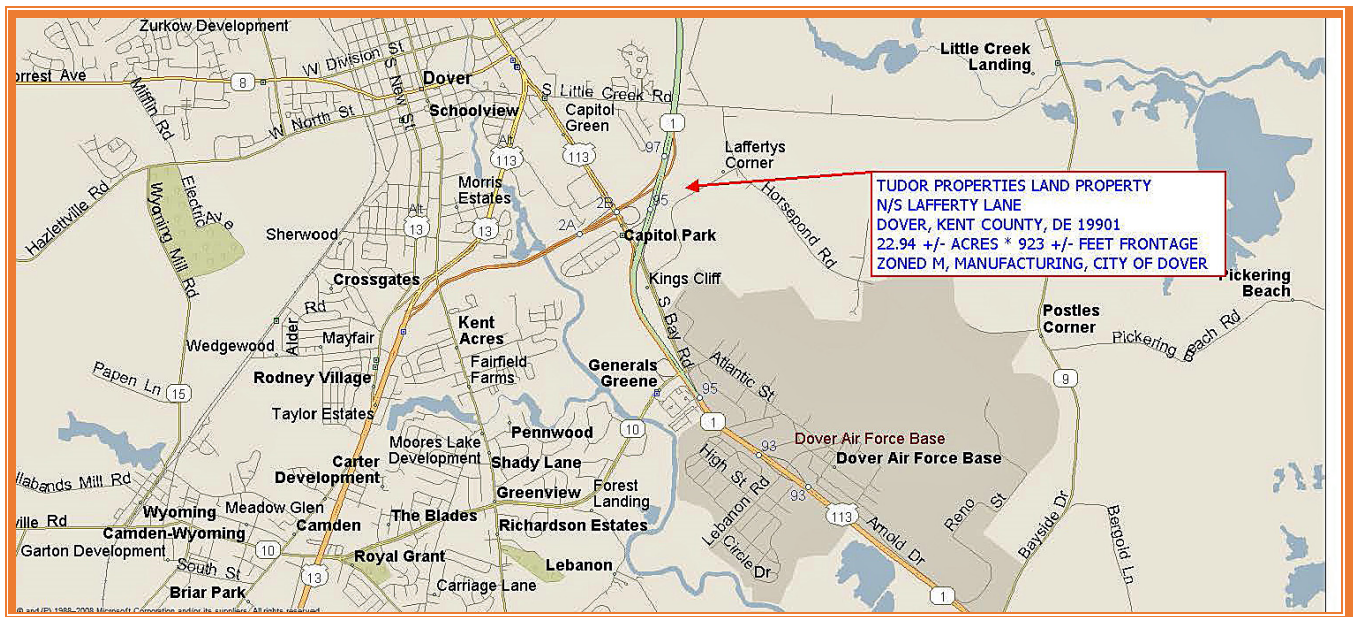
Phone: 302.736.2710 Fax: 302.736.2715

www.mcginnisrealty.com

TUDOR PROPERTIES PROPERTY
LAFFERTY LANE, DOVER, KENT COUNTY, DELAWARE 19901
OFFICE FILE # : 219345 * MLS # : DEKT234400



SALE PRICE \$ 574,000 * \$ 25,000 +/- PER ACRE LAND AREA



ALL INFORMATION SUBMITTED SUBJECT TO ERRORS AND MODIFICATIONS. ALL INFORMATION CONTAINED HEREIN OBTAINED FROM RELIABLE SOURCES BUT NOT QUARANTEED. PROSPECTIVE PURCHASERS SHOULD VERIFY ALL INFORMATION SUBMITTED. LISTING BROKERAGE REPRESENTS SELLER.
PAGE 1 OF 7 PAGES

Tax Map Identification ED05 - 077.16 - 02 - 0500 - 00001

Deed Reference D606 - 019

Zoning M, MANUFACTURING, CITY OF DOVER

Census Tract 410

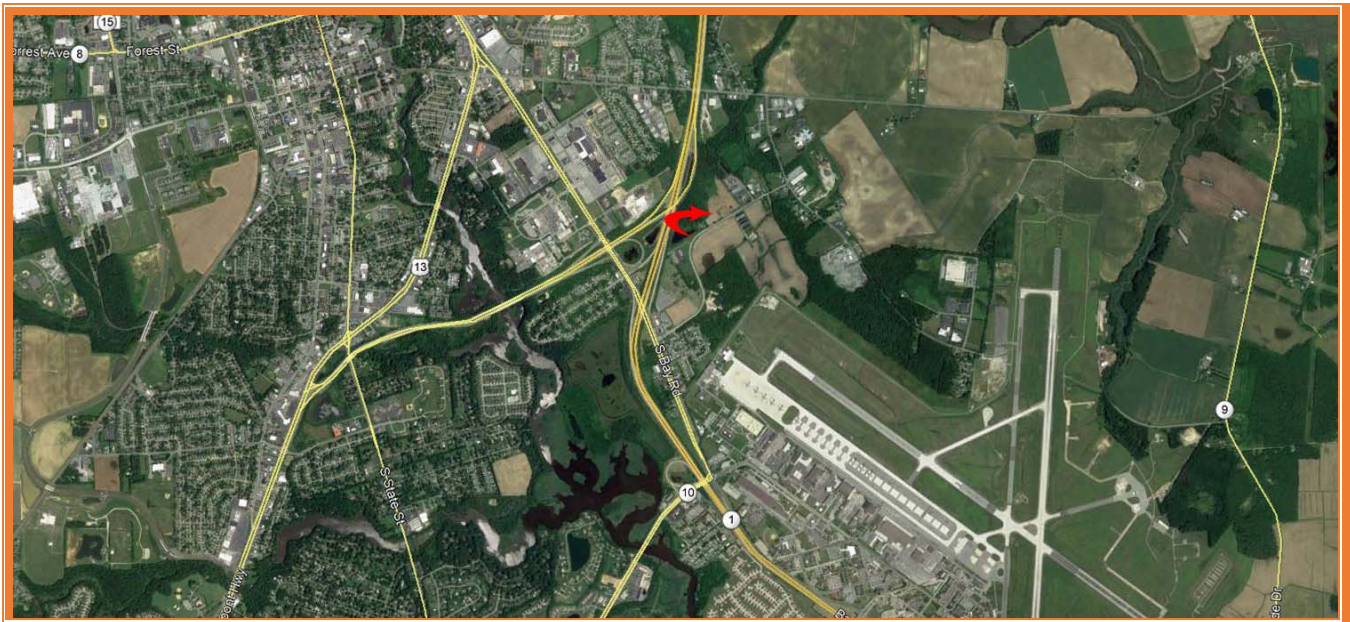
Flood Hazard Map 10001C0188J; Zone X; July 7, 2014

Land Area		999,266	sq ft +/-	22.940	acres +/-
Frontage	922.56	ft +/-			
Depth	1,539.98	ft +/-			

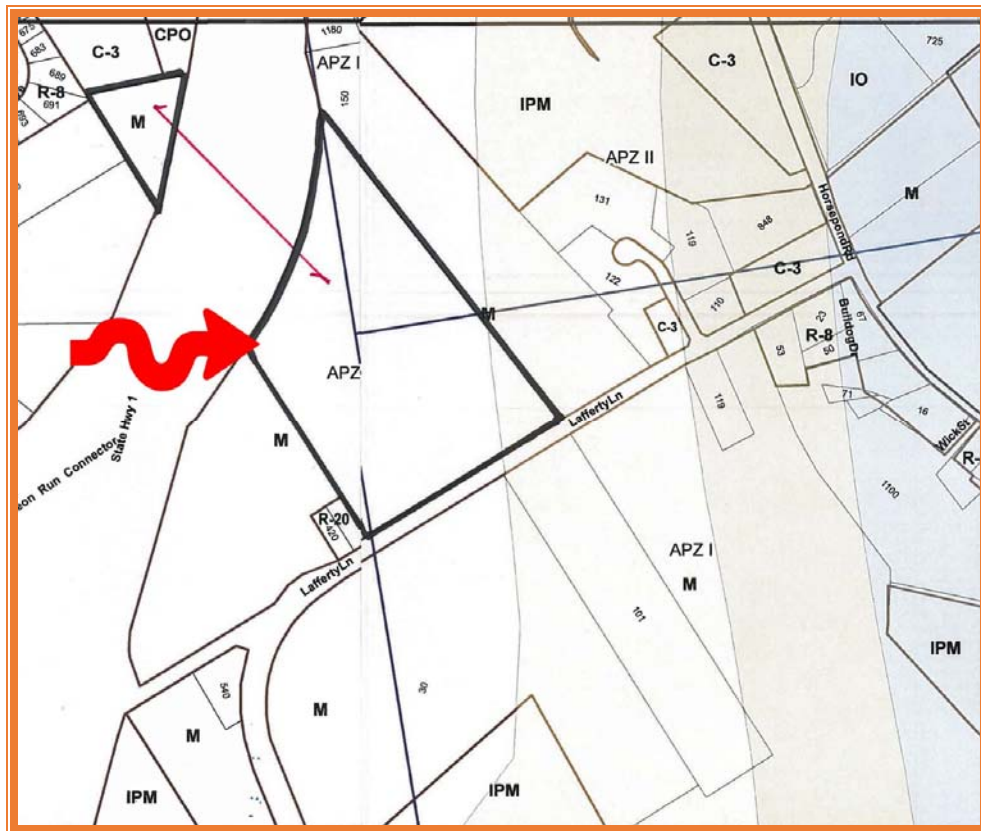
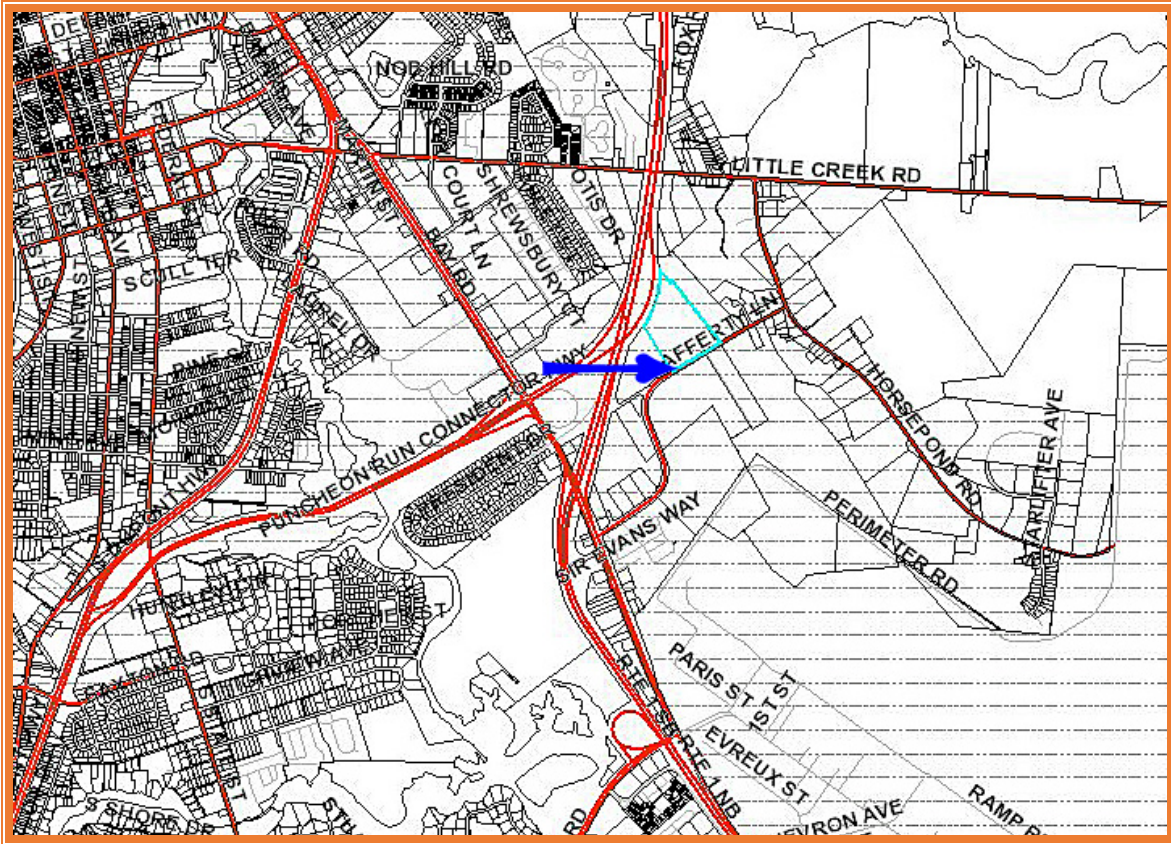
City Tax Assessment	Per Acre	Rate	Tax	Per Acre
\$688,000	\$29,991	\$0.440	\$3,027.20	\$132

County Tax Assessment	Per Acre	Rate	Tax	Per Acre
\$24,000	\$1,046	\$2.5030	\$600.72	\$26.19

TOTAL PROPERTY TAX			\$3,627.92	\$158.15
---------------------------	--	--	------------	----------



ALL INFORMATION SUBMITTED SUBJECT TO ERRORS AND MODIFICATIONS. ALL INFORMATION CONTAINED HEREIN OBTAINED FROM RELIABLE SOURCES BUT NOT GUARANTEED. PROSPECTIVE PURCHASERS SHOULD VERIFY ALL INFORMATION SUBMITTED. LISTING BROKERAGE REPRESENTS SELLER.
PAGE 2 OF 7 PAGES



ALL INFORMATION SUBMITTED SUBJECT TO ERRORS AND MODIFICATIONS. ALL INFORMATION CONTAINED HEREIN OBTAINED FROM RELIABLE SOURCES BUT NOT GUARANTEED. PROSPECTIVE PURCHASERS SHOULD VERIFY ALL INFORMATION SUBMITTED. LISTING BROKERAGE REPRESENTS SELLER.
PAGE 3 OF 7 PAGES



**ALL INFORMATION SUBMITTED SUBJECT TO ERRORS AND MODIFICATIONS. ALL INFORMATION CONTAINED HEREIN OBTAINED FROM RELIABLE SOURCES BUT NOT GUARANTEED. PROSPECTIVE PURCHASERS SHOULD VERIFY ALL INFORMATION SUBMITTED. LISTING BROKERAGE REPRESENTS SELLER.
PAGE 4 OF 7 PAGES**

