

TUDOR PROPERTIES HORSEPOND ROAD PROPERTY

848 & 858 HORSEPOND ROAD
DOVER, KENT COUNTY, DELAWARE 19901

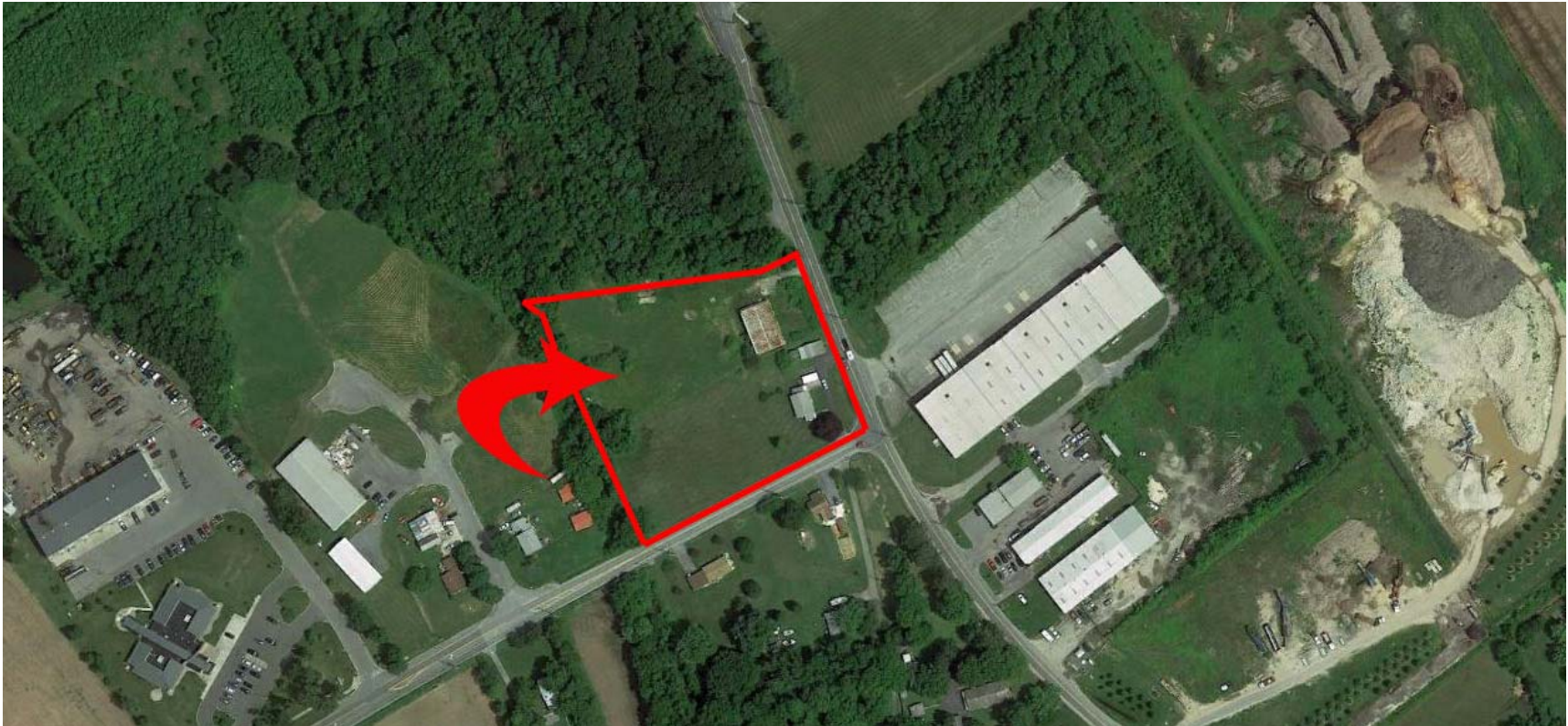


555 East Loockerman St.
Dover, Delaware 19901

Phone: 302.736.2710 Fax: 302.736.2715

www.mcginnisrealty.com

AERIAL PHOTO OF SITE

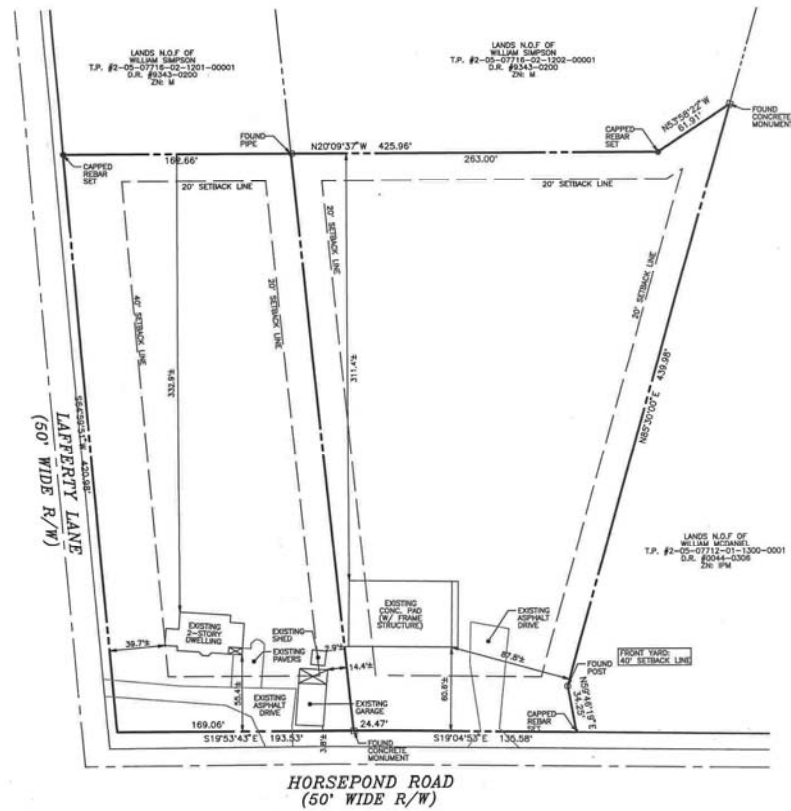


4/7/2021

McGINNIS COMMERCIAL REAL ESTATE COMPANY

SLIDE 2 OF 12

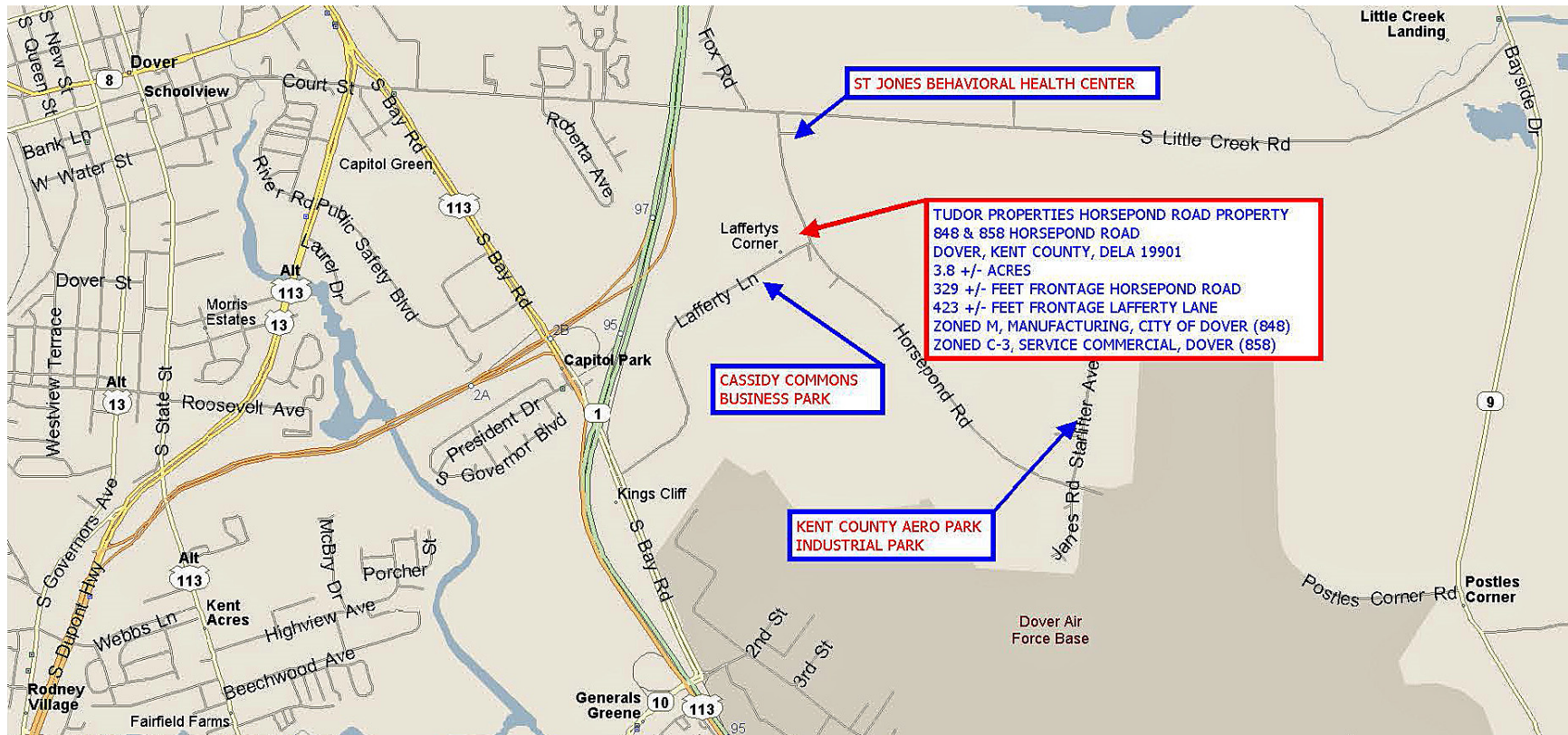
4/7/2021



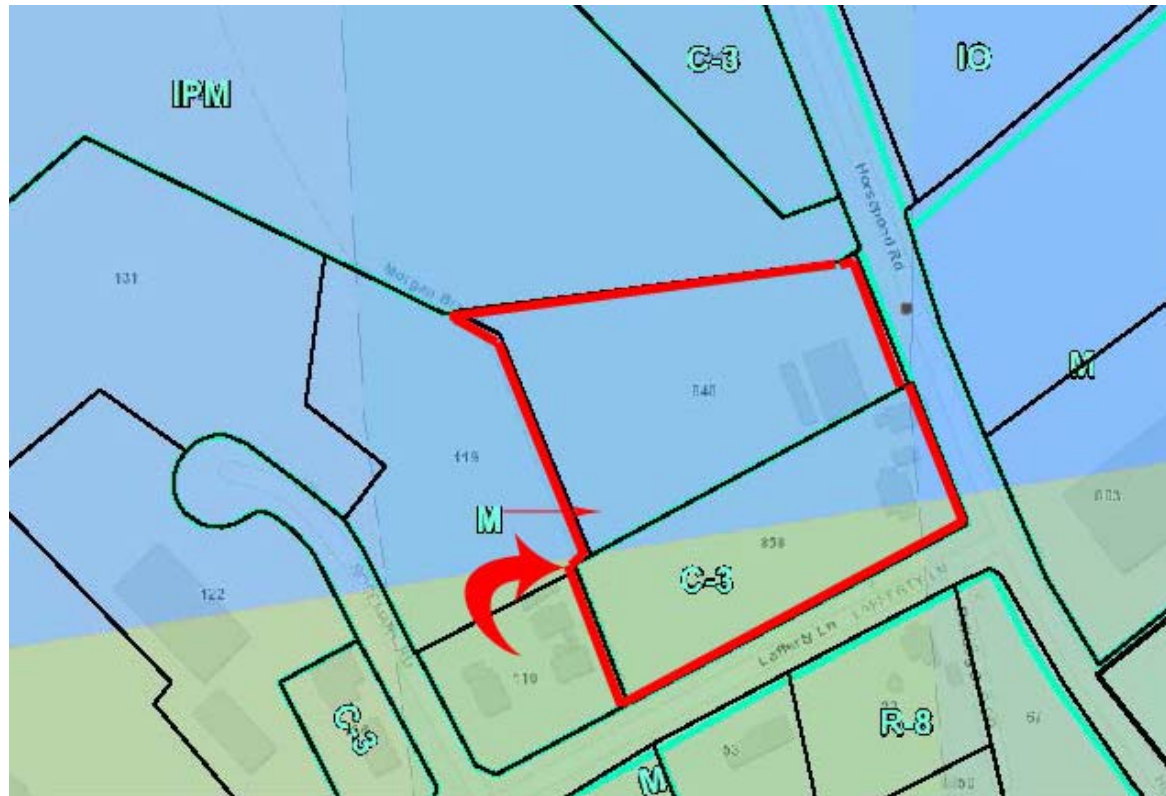
McGINNIS COMMERCIAL REAL ESTATE COMPANY

SLIDE 3 OF 12

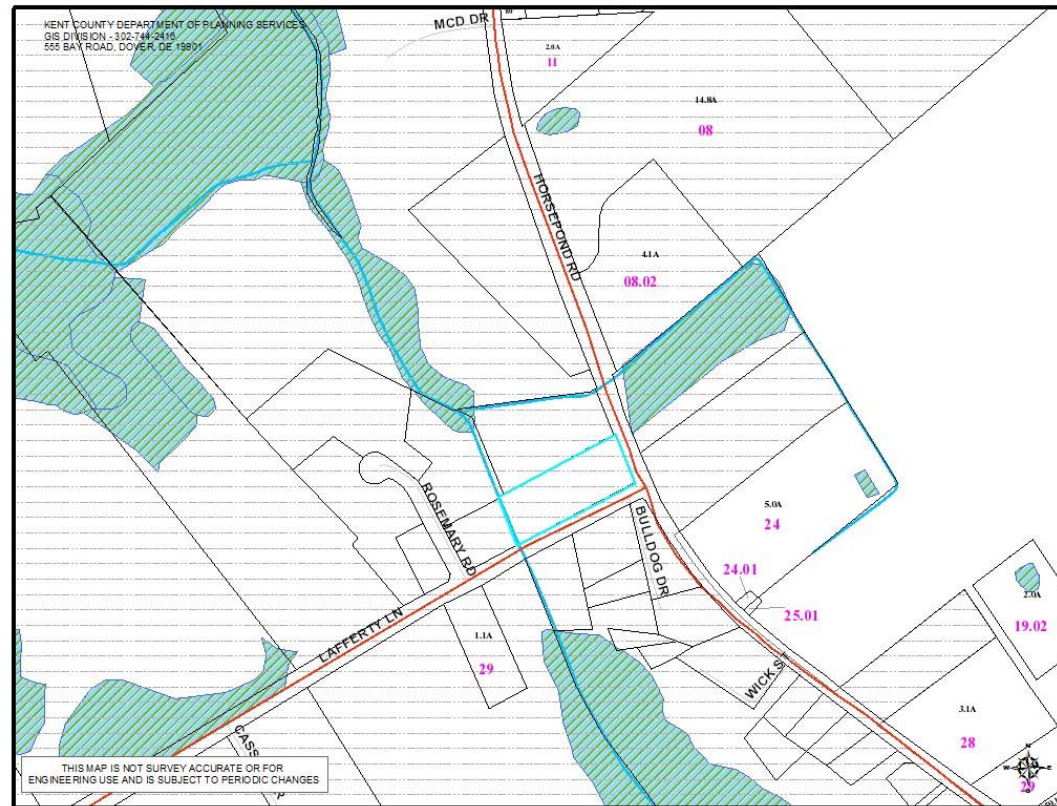
MARKET AREA MAP



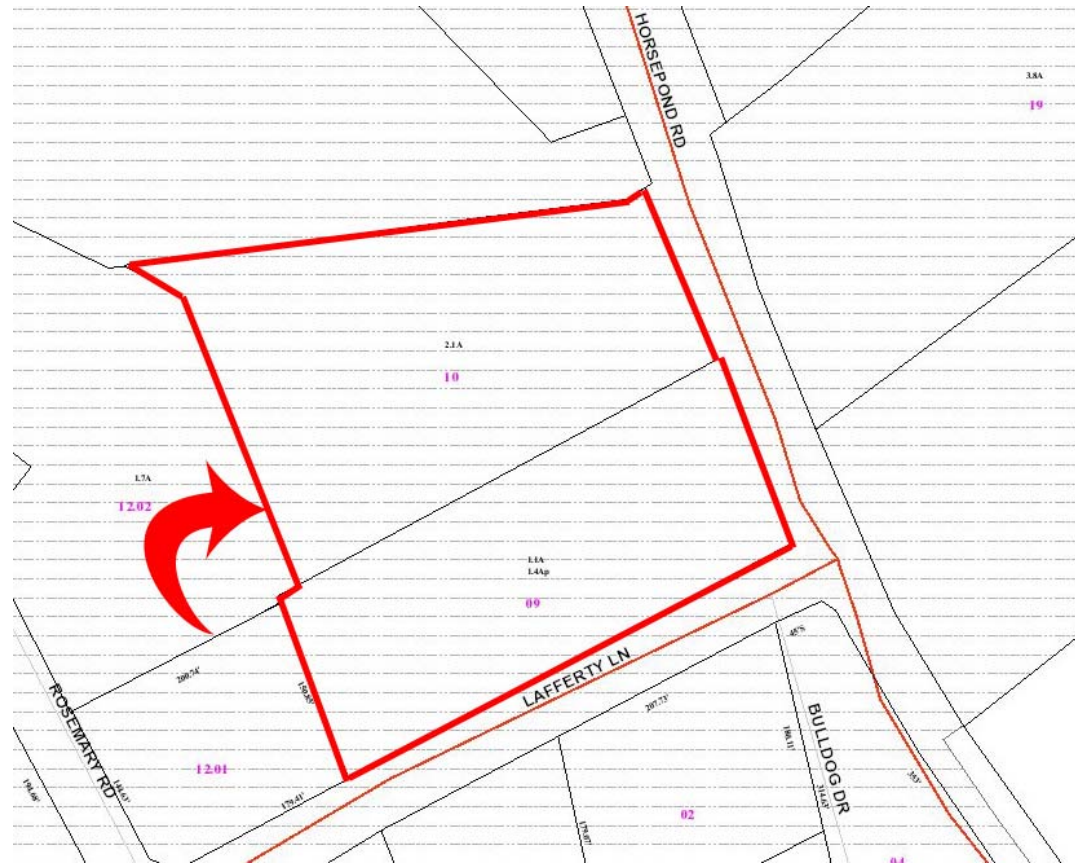
ZONING MAP



TAX MAP WITH WETLANDS



TAX MAP



4/7/2021

McGINNIS COMMERCIAL REAL ESTATE COMPANY

SLIDE 7 OF 12

VIEW OF HORSEPOND ROAD FRONTAGE



4/7/2021

McGINNIS COMMERCIAL REAL ESTATE COMPANY

SLIDE 8 OF 12

VIEW NORTHWEST THROUGH 858 HORSEPOUND ROAD



4/7/2021

McGINNIS COMMERCIAL REAL ESTATE COMPANY

SLIDE 9 OF 12

VIEW OF 848 FRONTAGE



4/7/2021

McGINNIS COMMERCIAL REAL ESTATE COMPANY

SLIDE 10 OF 12

VIEW OF 858 FRONTAGE



4/7/2021

McGINNIS COMMERCIAL REAL ESTATE COMPANY

SLIDE 11 OF 12

VIEW OF REAR OF PROPERTY LOOKING NORTHEAST



4/7/2021

McGINNIS COMMERCIAL REAL ESTATE COMPANY

SLIDE 12 OF 12