



555 East Lookerman St.
Dover, Delaware 19901

McGinnis Commercial Real Estate

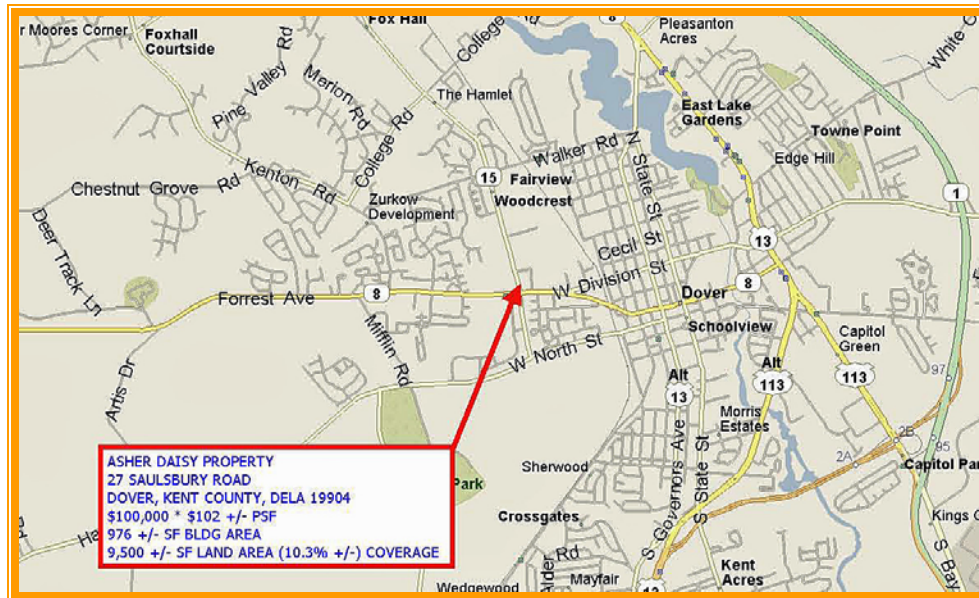
Phone: 302.736.2710 Fax: 302.736.2715

www.mcginisrealty.com

ASHER DAISY PROPERTY
27 SAULSBURY ROAD, DOVER, KENT COUNTY, DELAWARE 19901
OFFICE FILE #29080 * MLS #5578391



SALE PRICE \$ 100,000 * \$ 75. +/- PER SQUARE FOOT



ALL INFORMATION SUBMITTED SUBJECT TO ERRORS AND MODIFICATIONS. ALL INFORMATION CONTAINED HEREIN OBTAINED FROM RELIABLE SOURCES BUT NOT GUARANTEED. PROSPECTIVE PURCHASERS SHOULD VERIFY ALL INFORMATION SUBMITTED. LISTING BROKERAGE REPRESENTS SELLER.
PAGE 1 OF 4 PAGES

LIST PRICE	\$100,000
Price Per Square Foot	\$75 +/-

Tax Map Identification ED05 - 076.07 - 01 - 39.00

Deed Reference B - 16 - 134

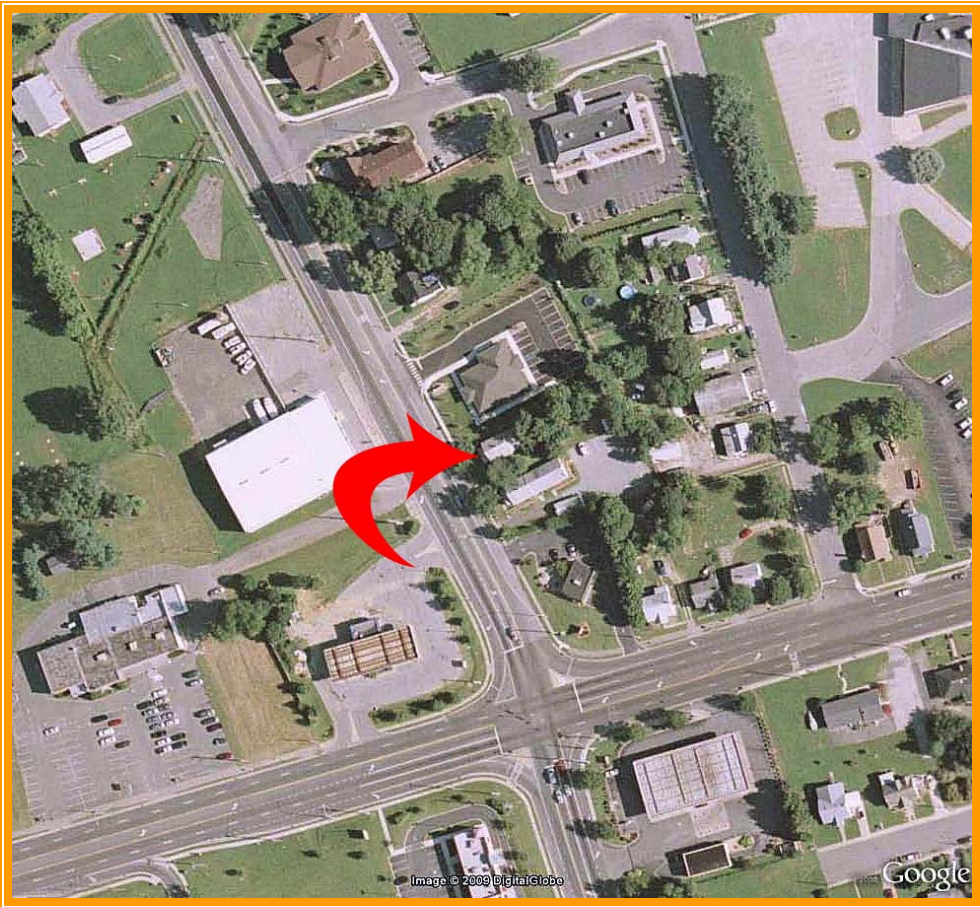
Zoning CPO, CENTRAL PROFESSIONAL OFFICE, City Of Dover

Office Bldg Area (sq ft)	1,339	Sq Ft +/-	
Land Area	9,500	Sq Ft +/-	0.2181 A +/-
Frontage	50	Ft +/-	
Depth	190	Ft +/-	
Coverage Ratio	14.09%		

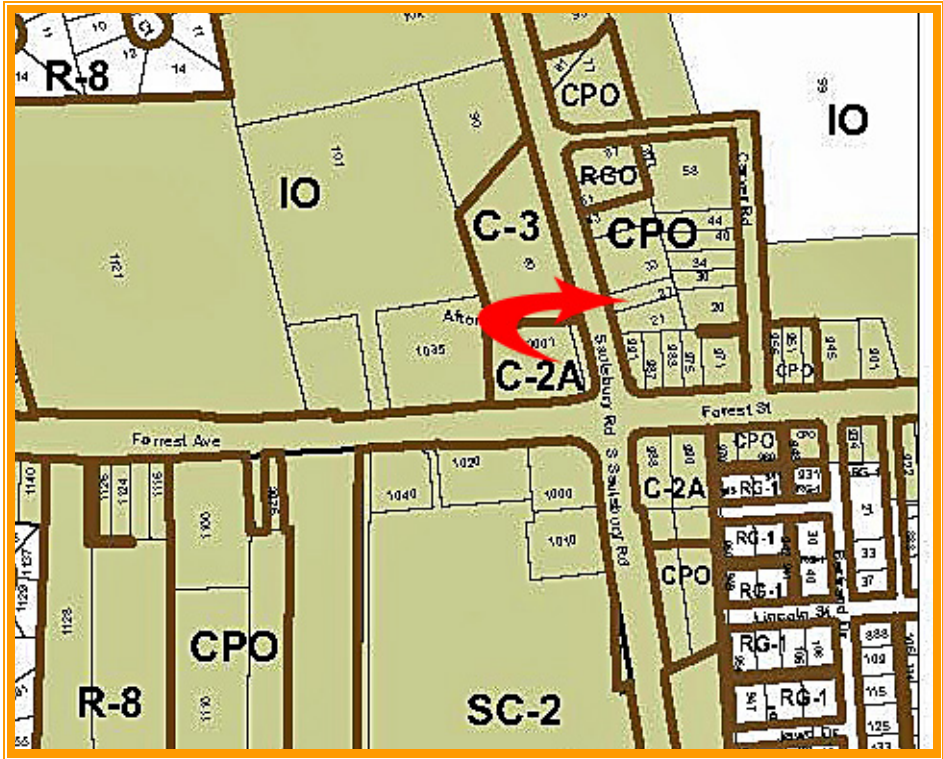
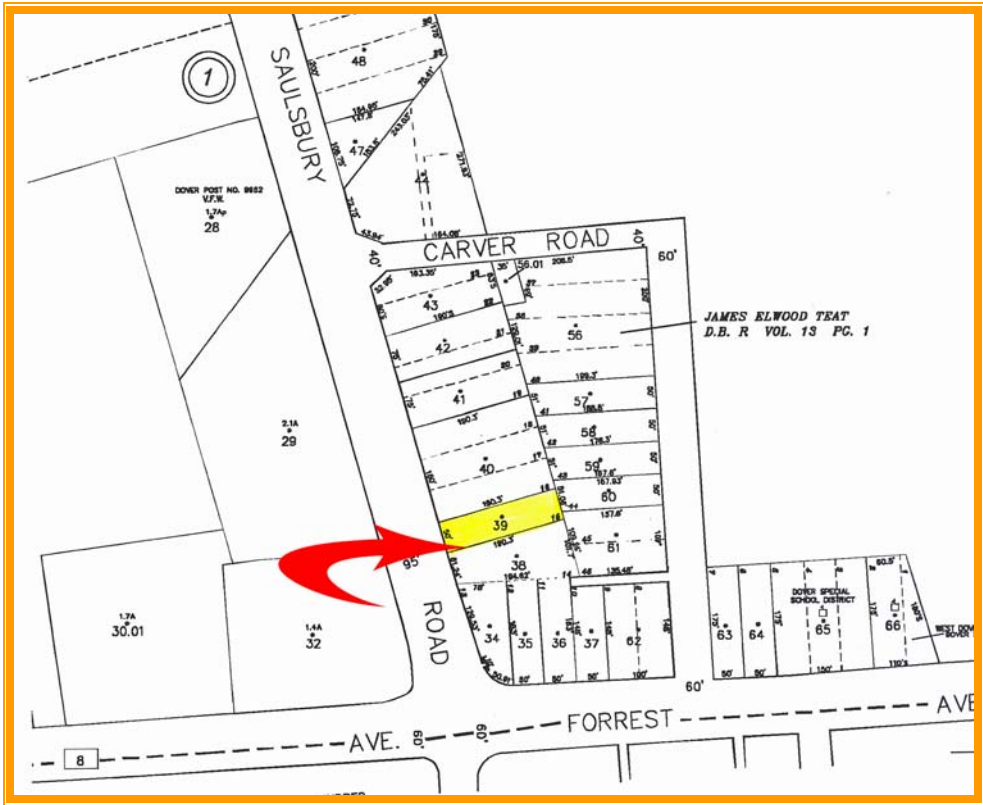
City Tax Assessment	Per Sq Ft	Rate	Tax	Per Sq Ft
\$82,800	\$61.84	\$0.3300	\$273.24	\$0.20

County Tax Assessment	Per Sq Ft	Rate	Tax	Per Sq Ft
\$13,300	\$9.93	\$1.9754	\$262.73	\$0.20

TOTAL PROPERTY TAX **\$535.97** **\$0.40**



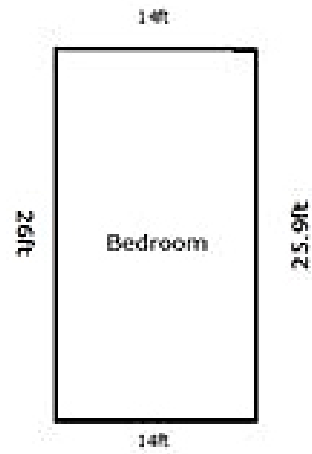
ALL INFORMATION SUBMITTED SUBJECT TO ERRORS AND MODIFICATIONS. ALL INFORMATION CONTAINED HEREIN OBTAINED FROM RELIABLE SOURCES BUT NOT GUARANTEED. PROSPECTIVE PURCHASERS SHOULD VERIFY ALL INFORMATION SUBMITTED. LISTING BROKERAGE REPRESENTS SELLER. PAGE 2 OF 4 PAGES



ALL INFORMATION SUBMITTED SUBJECT TO ERRORS AND MODIFICATIONS. ALL INFORMATION CONTAINED HEREIN OBTAINED FROM RELIABLE SOURCES BUT NOT GUARANTEED. PROSPECTIVE PURCHASERS SHOULD VERIFY ALL INFORMATION SUBMITTED. LISTING BROKERAGE REPRESENTS SELLER.
 PAGE 3 OF 4 PAGES



First Floor
[976 Sq ft]



Second Floor
[363.3 Sq ft]

