



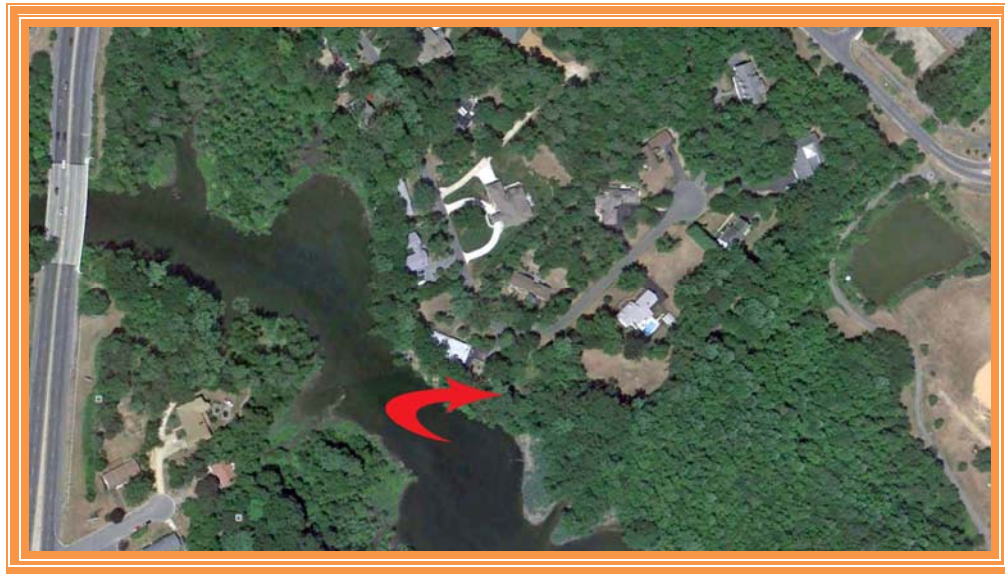
555 East Lookerman St.
Dover, Delaware 19901

McGinnis Commercial Real Estate

Phone: 302.736.2710 Fax: 302.736.2715

www.mcginnisrealty.com

HIGDON LOT
74 LAUREL DRIVE, DOVER, KENT COUNTY, DELAWARE 19901
OFFICE FILE # 211133 * MLS #6099106



SALE PRICE \$ 85,000 * \$2.75 +/- PSF LAND AREA

Residential Building Lot * Municipal Utilities Stubbed In

**108 +/- Feet Frontage On Laurel Drive * 200 +/- Feet Frontage On St Jones River
30,930 +/- Sq Ft * 0.71 +/- Acre * Wooded Setting**



ALL INFORMATION SUBMITTED SUBJECT TO ERRORS AND MODIFICATIONS. ALL INFORMATION CONTAINED HEREIN OBTAINED FROM RELIABLE SOURCES BUT NOT GUARANTEED. PROSPECTIVE PURCHASERS SHOULD VERIFY ALL INFORMATION SUBMITTED. LISTING BROKERAGE REPRESENTS SELLER.

Tax Map Identification ED05 - 077.14 - 01 - 32.00

Deed Reference D2202 - 050

Zoning R -10, One Family Residence Zone, City Of Dover

Census Tract 412

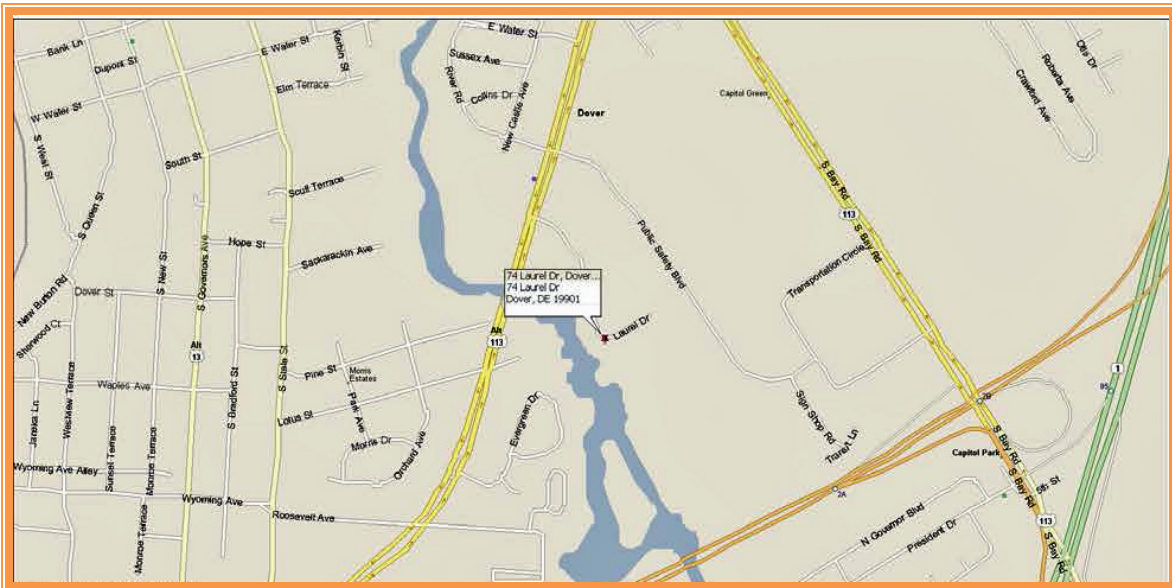
Flood Hazard Map 10001C0169H; May 5, 2003; Zone AE

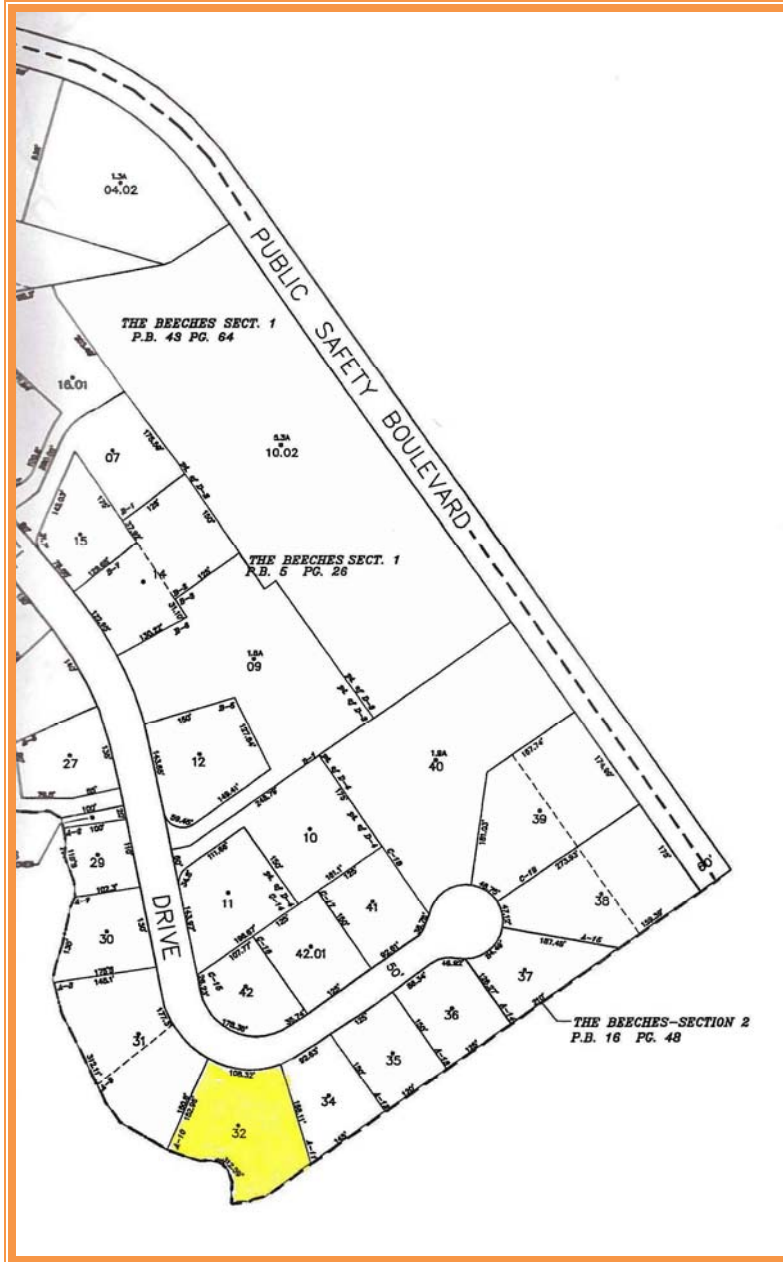
Land Area		30,928	sq ft +/-	0.710	acre
Laurel Drive Frontage	108.32		ft +/-		
St Jones River Frontage	194.63				
Depth	166.11		ft +/-		

City Tax					
Assessment	Per Sq Ft	Rate	Tax	Per Sq Ft	
\$90,900	\$2.94	\$0.338	\$307.06	\$0.01	

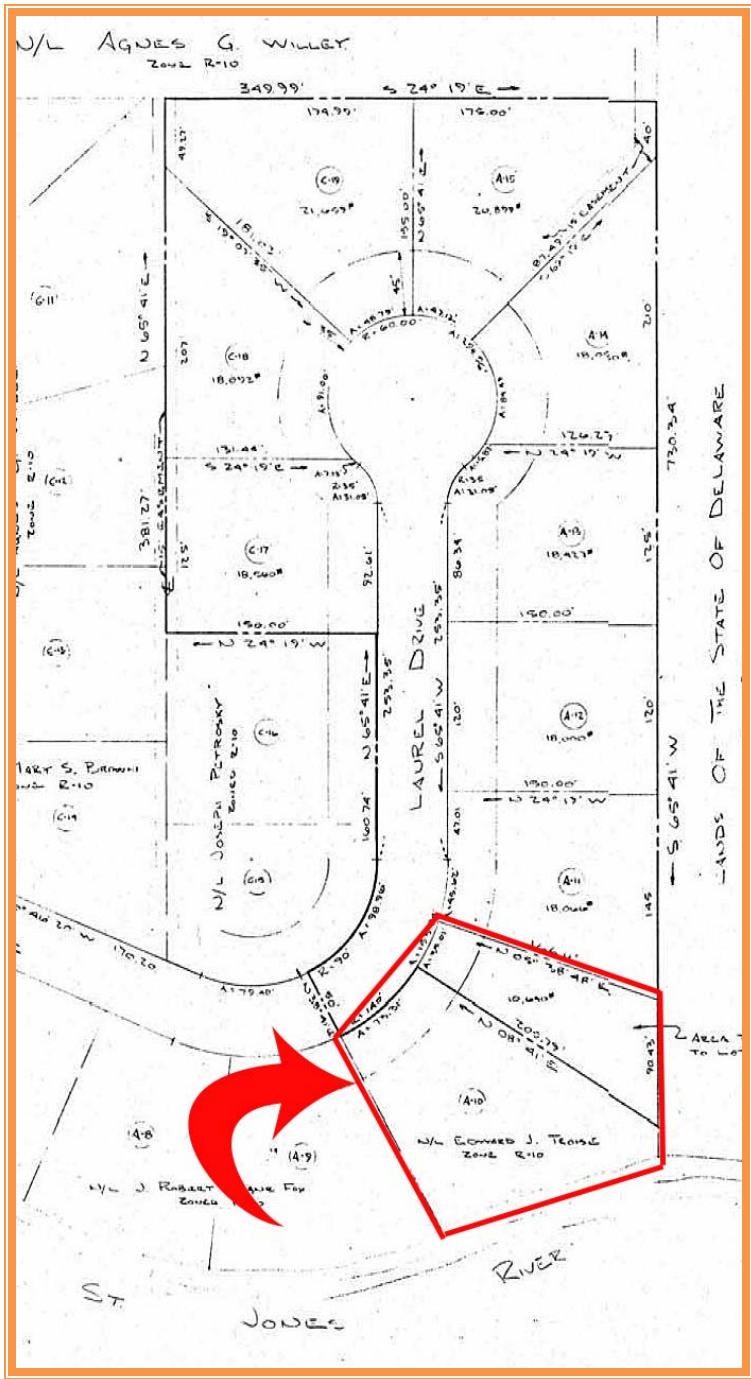
County Tax					
Assessment	Per Sq Ft	Rate	Tax	Per Sq Ft	
\$9,400	\$0.30	\$2.2671	\$213.11	\$0.0069	

TOTAL PROPERTY TAX			\$520.17	\$0.02	
---------------------------	--	--	----------	--------	--





ALL INFORMATION SUBMITTED SUBJECT TO ERRORS AND MODIFICATIONS. ALL INFORMATION CONTAINED HEREIN OBTAINED FROM RELIABLE SOURCES BUT NOT GUARANTEED. PROSPECTIVE PURCHASERS SHOULD VERIFY ALL INFORMATION SUBMITTED. LISTING BROKERAGE REPRESENTS SELLER.
PAGE 3 OF 4 PAGES



ALL INFORMATION SUBMITTED SUBJECT TO ERRORS AND MODIFICATIONS. ALL INFORMATION CONTAINED HEREIN OBTAINED FROM RELIABLE SOURCES BUT NOT GUARANTEED. PROSPECTIVE PURCHASERS SHOULD VERIFY ALL INFORMATION SUBMITTED. LISTING BROKERAGE REPRESENTS SELLER.
 PAGE 4 OF 4 PAGES