



**555 East Lookerman St.
Dover, Delaware 19901**

McGinnis Commercial Real Estate

Phone: 302.736.2710 Fax: 302.736.2715

www.mcginnisrealty.com

VILLAGE INN RESTAURANT PROPERTY
3726 SOUTH LITTLE CREEK ROAD, LITTLE CREEK, KENT COUNTY, DELAWARE 19901
OFFICE FILE # : 29067 * MLS # : 5920380



SALE PRICE \$199,500 * \$ 37 +/- PER SQUARE FOOT

Tax Map Identification ED00 - 078.02 - 01 - 06.00 & 06.01

Deed Reference D623 - 355

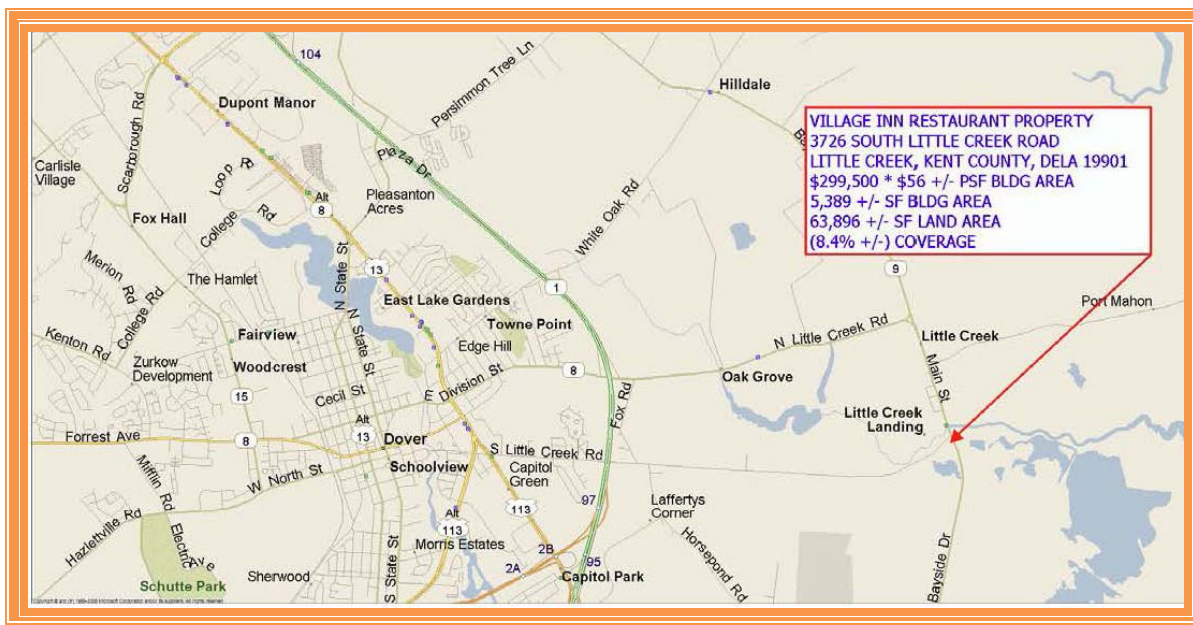
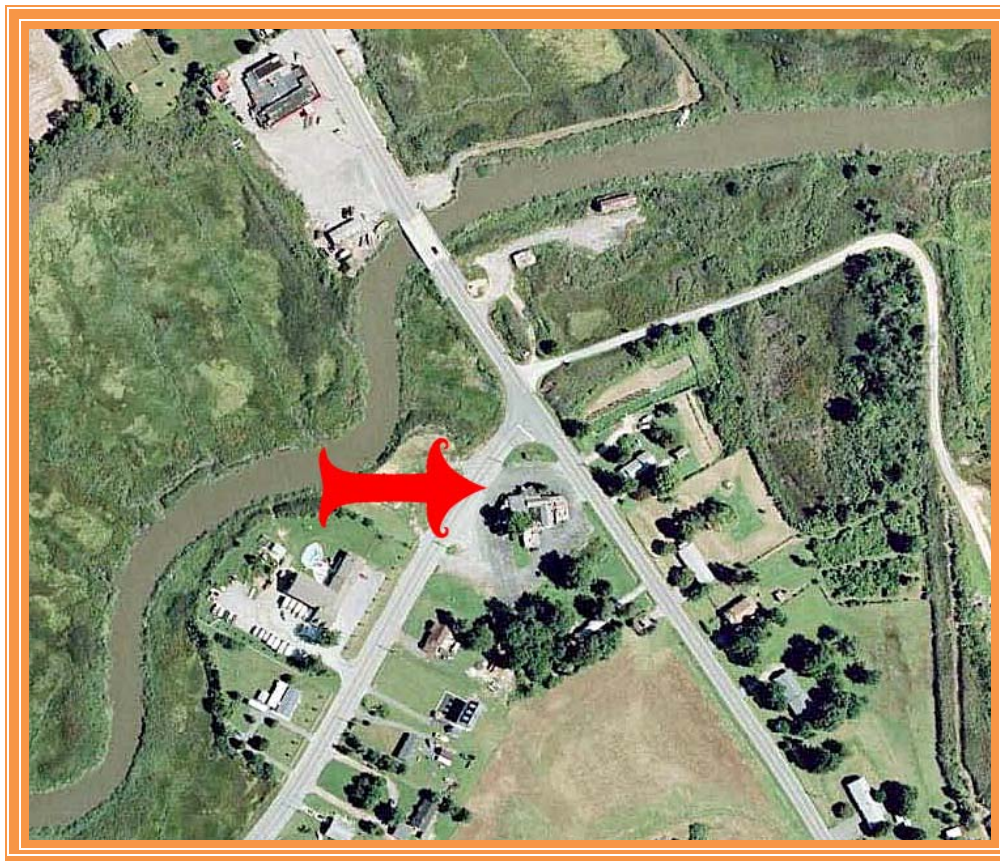
Zoning B - G, General Business, Kent County

Census Tract 410

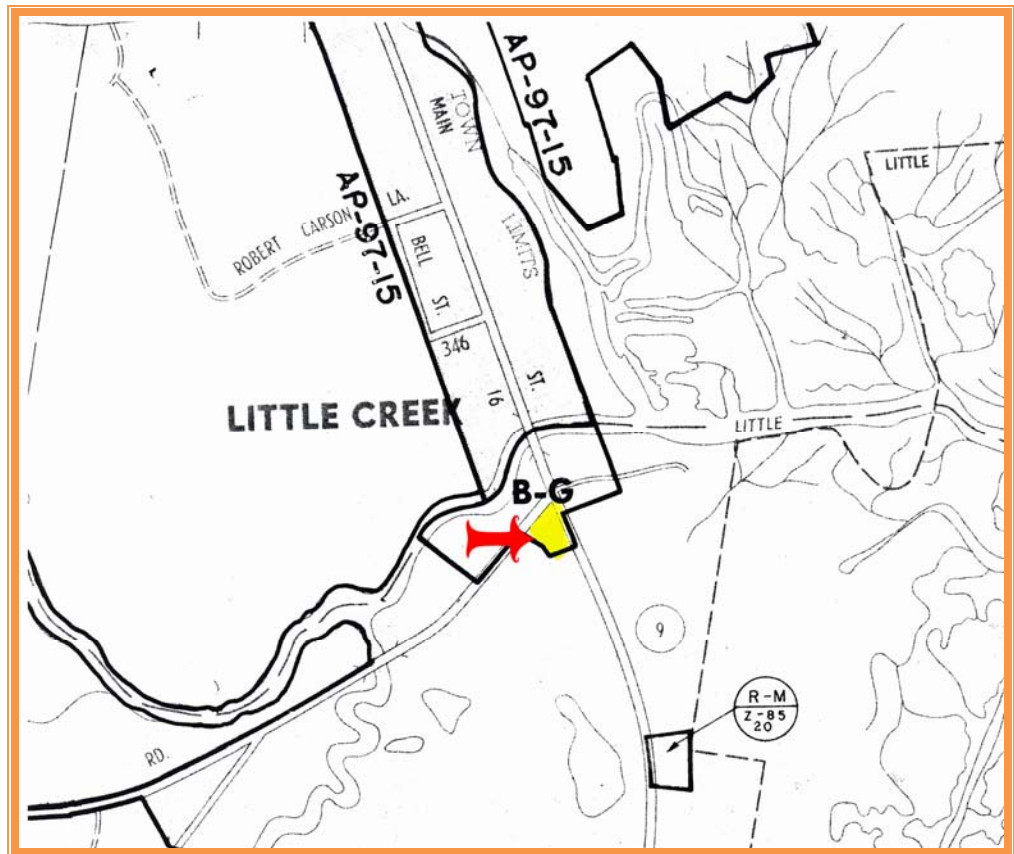
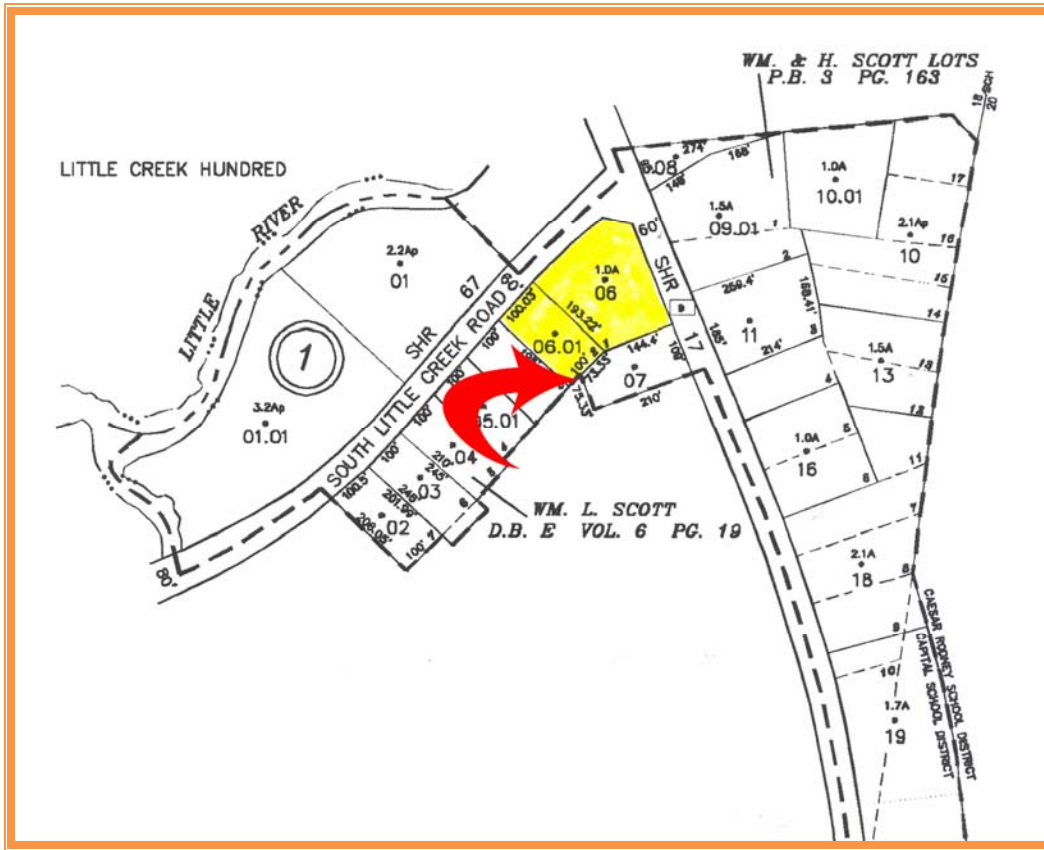
Flood Hazard Map 10001C0187H; May 5, 2003; Zone AE

Land Area		63,896	sq ft +/-	1.467	acre
	Frontage	300.90	ft +/-		
	Depth	212.35	ft +/-		
Bldg Area (sq ft)		5,389	sq ft +/-		
	Coverage Ratio	8.43%			
	Parking Spaces	40			
	Parking Ratio	2.23	per 300 sf		
County Tax Assessment					
\$123,500	Per Sq Ft	\$22.92	Rate	\$2,2459	Tax
				\$2,773.69	Per Sq Ft
					\$0.51

ALL INFORMATION SUBMITTED SUBJECT TO ERRORS AND MODIFICATIONS. ALL INFORMATION CONTAINED HEREIN OBTAINED FROM RELIABLE SOURCES BUT NOT GUARANTEED. PROSPECTIVE PURCHASERS SHOULD VERIFY ALL INFORMATION SUBMITTED. LISTING BROKERAGE REPRESENTS SELLER.
PAGE 1 OF 4 PAGES



ALL INFORMATION SUBMITTED SUBJECT TO ERRORS AND MODIFICATIONS. ALL INFORMATION CONTAINED HEREIN OBTAINED FROM RELIABLE SOURCES BUT NOT GUARANTEED. PROSPECTIVE PURCHASERS SHOULD VERIFY ALL INFORMATION SUBMITTED. LISTING BROKERAGE REPRESENTS SELLER.
 PAGE 2 OF 4 PAGES



ALL INFORMATION SUBMITTED SUBJECT TO ERRORS AND MODIFICATIONS. ALL INFORMATION CONTAINED HEREIN OBTAINED FROM RELIABLE SOURCES BUT NOT GUARANTEED. PROSPECTIVE PURCHASERS SHOULD VERIFY ALL INFORMATION SUBMITTED. LISTING BROKERAGE REPRESENTS SELLER.
PAGE 3 OF 4 PAGES



**ALL INFORMATION SUBMITTED SUBJECT TO ERRORS AND MODIFICATIONS. ALL INFORMATION CONTAINED HEREIN OBTAINED FROM RELIABLE SOURCES BUT NOT GUARANTEED. PROSPECTIVE PURCHASERS SHOULD VERIFY ALL INFORMATION SUBMITTED. LISTING BROKERAGE REPRESENTS SELLER.
PAGE 4 OF 4 PAGES**