



555 East Lookerman St.
Dover, Delaware 19901

McGinnis Commercial Real Estate

Phone: 302.736.2710 Fax: 302.736.2715

www.mcginnisrealty.com

LIBERTO STATE STREET PROPERTY
1084-1086 SOUTH STATE STREET, DOVER, KENT COUNTY, DELAWARE 19901
OFFICE FILE # : 29089 * MLS # : 6137351



SALE PRICE \$ 280,000 * \$ 12. +/- PER SQUARE FOOT

Tax Map Identification ED05 - 077.17 - 07 - 19.00
ED05 - 086.05 - 02 - 21.00

Deed Reference D3635 - 0204

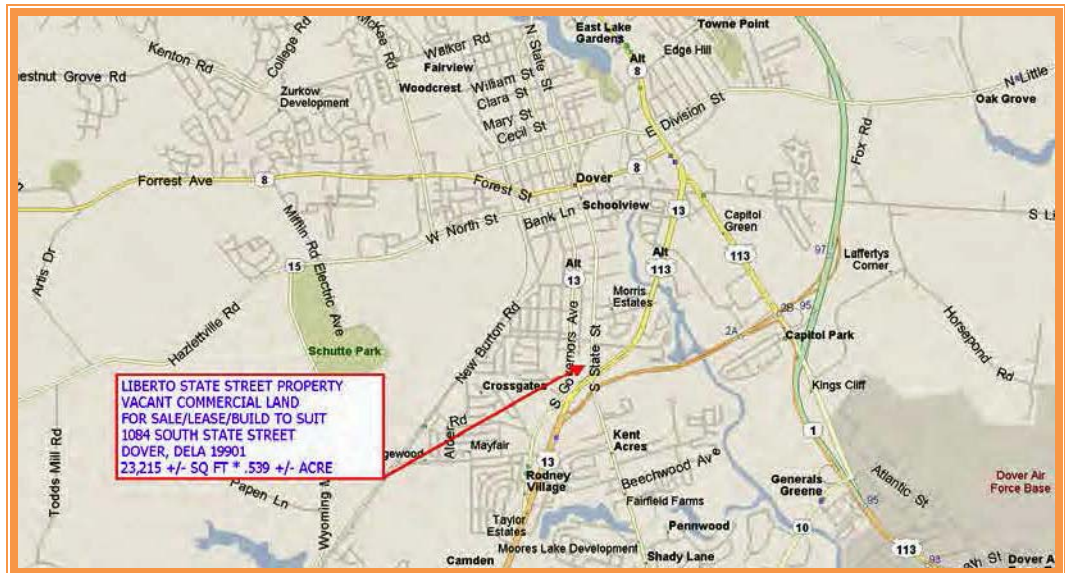
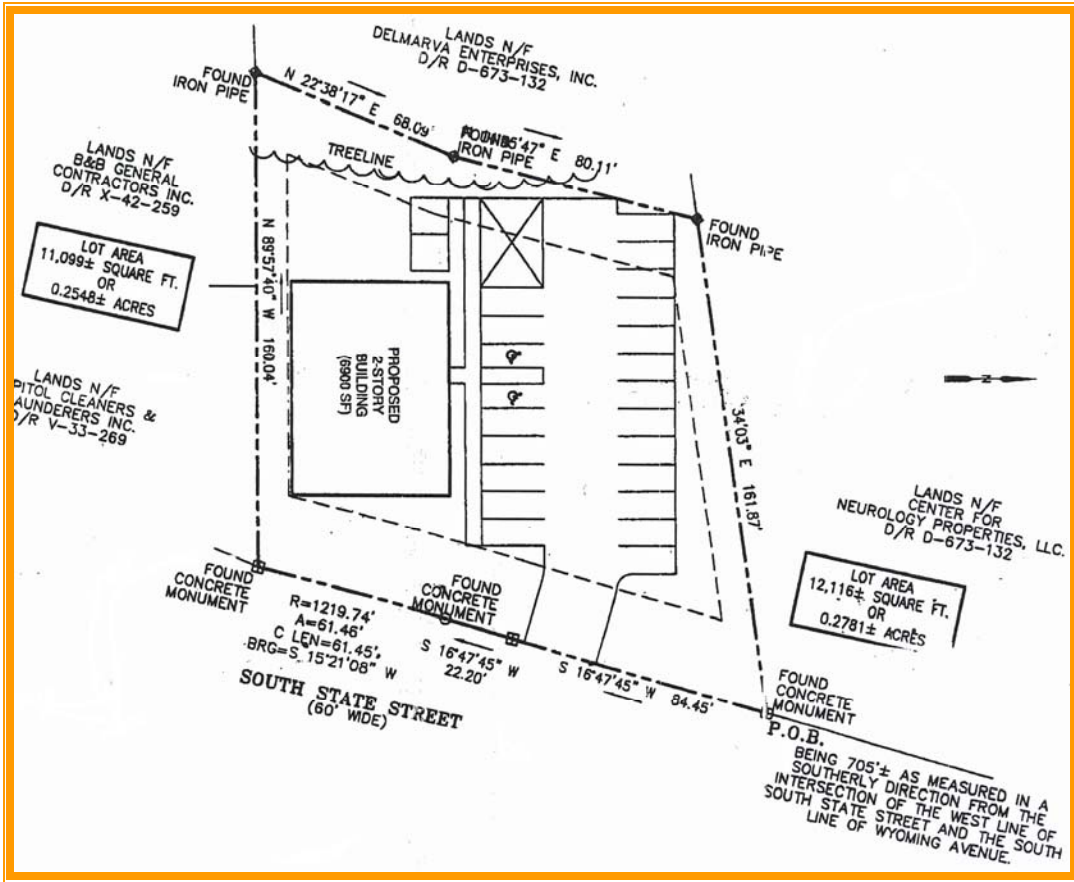
Zoning C-2A, Neighborhood Commercial, City of Dover

Census Tract 413

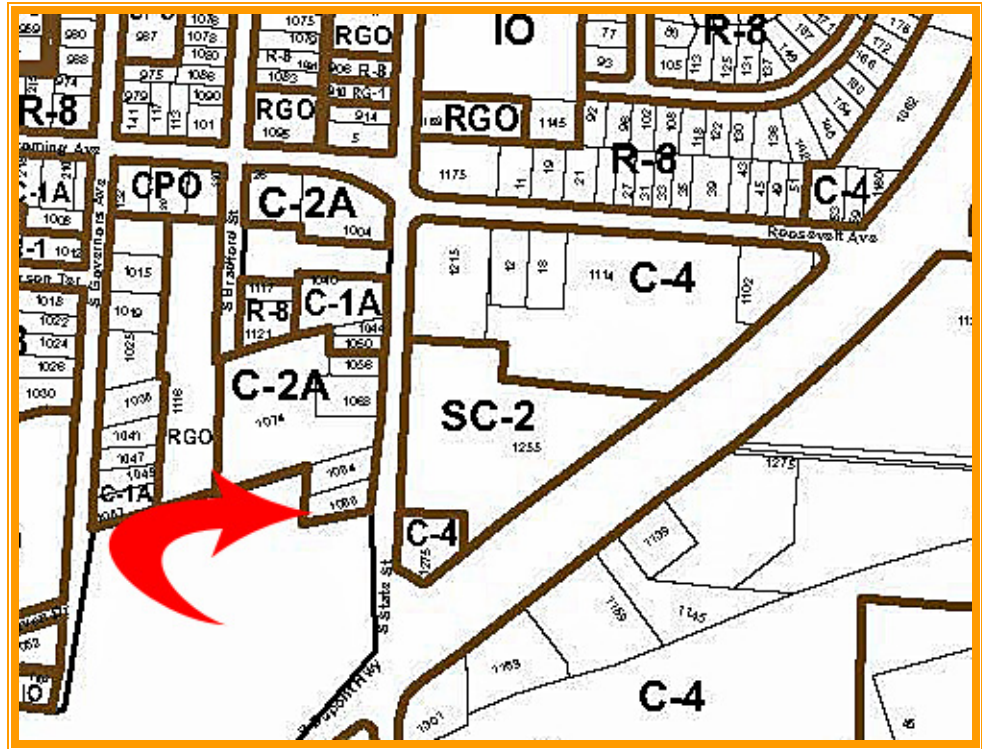
Flood Hazard Map 10001C0169H; May 5, 2003

Land Area		23,215	sq ft +/-	0.533	acre
Frontage	168.10	ft +/-			
Depth	161.87	ft +/-			

ALL INFORMATION SUBMITTED SUBJECT TO ERRORS AND MODIFICATIONS. ALL INFORMATION CONTAINED HEREIN OBTAINED FROM RELIABLE SOURCES BUT NOT GUARANTEED. PROSPECTIVE PURCHASERS SHOULD VERIFY ALL INFORMATION SUBMITTED. LISTING BROKERAGE REPRESENTS SELLER.
PAGE 1 OF 4 PAGES



ALL INFORMATION SUBMITTED SUBJECT TO ERRORS AND MODIFICATIONS. ALL INFORMATION CONTAINED HEREIN OBTAINED FROM RELIABLE SOURCES BUT NOT GUARANTEED. PROSPECTIVE PURCHASERS SHOULD VERIFY ALL INFORMATION SUBMITTED. LISTING BROKERAGE REPRESENTS SELLER.
 PAGE 2 OF 4 PAGES



ALL INFORMATION SUBMITTED SUBJECT TO ERRORS AND MODIFICATIONS. ALL INFORMATION CONTAINED HEREIN OBTAINED FROM RELIABLE SOURCES BUT NOT GUARANTEED. PROSPECTIVE PURCHASERS SHOULD VERIFY ALL INFORMATION SUBMITTED. LISTING BROKERAGE REPRESENTS SELLER.
PAGE 3 OF 4 PAGES



**ALL INFORMATION SUBMITTED SUBJECT TO ERRORS AND MODIFICATIONS. ALL INFORMATION CONTAINED HEREIN OBTAINED FROM RELIABLE SOURCES BUT NOT GUARANTEED. PROSPECTIVE PURCHASERS SHOULD VERIFY ALL INFORMATION SUBMITTED. LISTING BROKERAGE REPRESENTS SELLER.
PAGE 4 OF 4 PAGES**