



555 East Lookerman St.
Dover, Delaware 19901

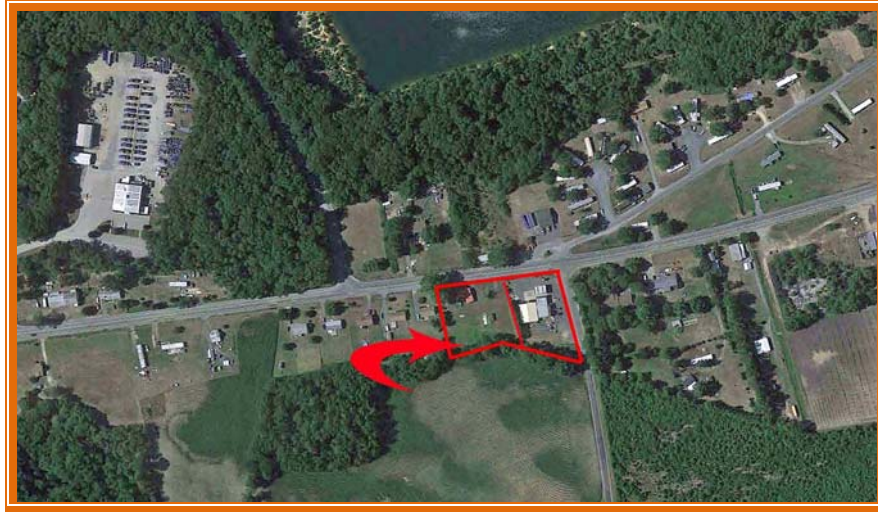
Phone: 302.736.2710 Fax: 302.736.2715

www.mcginnisrealty.com

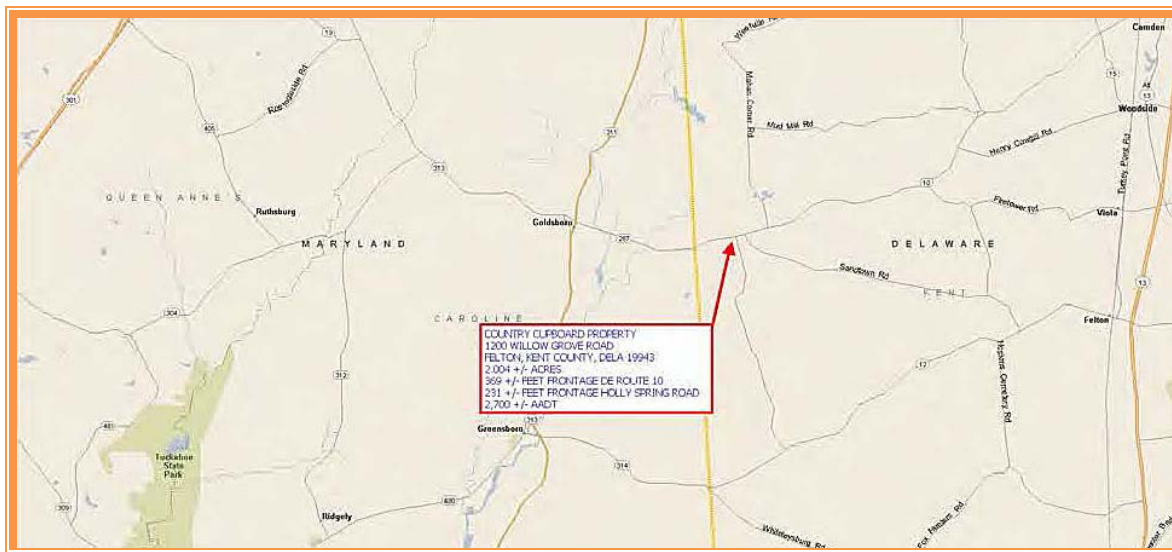
COUNTRY CUPBOARD PROPERTY

1200 - 1168 WILLOW GROVE ROAD, FELTON, KENT COUNTY, DELAWARE 19943

OFFICE FILE # : 213169 * MLS # : 6541925



SALE PRICE \$ 845,000 * \$ 9.68 +/- PER SQUARE FOOT LAND AREA * \$ 421,700 +/- PER ACRE
4,668 +/- SQUARE FOOT RETAIL BUILDING * \$ 181 +/- PER SQUARE FOOT BLDG AREA
INCLUDES GOING - CONCERN BUSINESS ENTERPRISE



ALL INFORMATION SUBMITTED SUBJECT TO ERRORS AND MODIFICATIONS. ALL INFORMATION
CONTAINED HEREIN OBTAINED FROM RELIABLE SOURCES BUT NOT GUARANTEED. PROSPECTIVE
PURCHASERS SHOULD VERIFY ALL INFORMATION SUBMITTED. LISTING BROKERAGE REPRESENTS SELLER.
PAGE 1 OF 5 PAGES

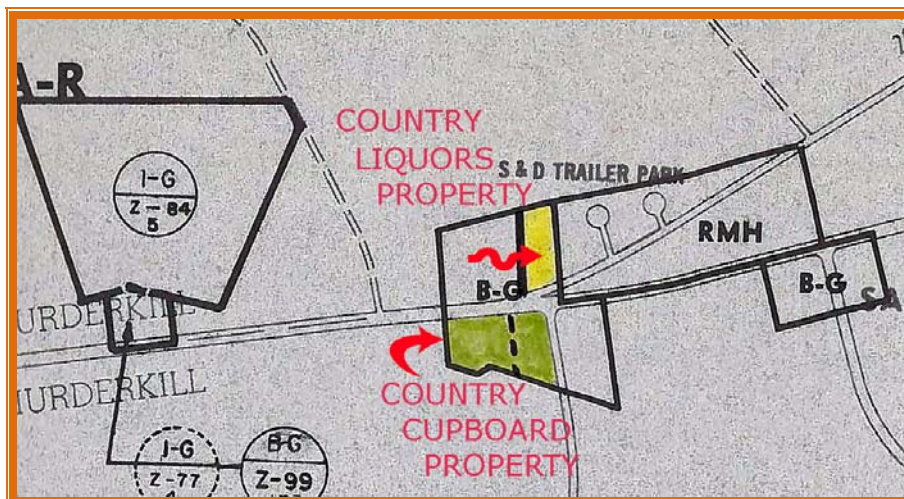
ALL INFORMATION SUBMITTED SUBJECT TO ERRORS AND MODIFICATIONS. ALL INFORMATION
CONTAINED HEREIN OBTAINED FROM RELIABLE SOURCES BUT NOT GUARANTEED. PROSPECTIVE
PURCHASERS SHOULD VERIFY ALL INFORMATION SUBMITTED. LISTING BROKERAGE REPRESENTS SELLER.
PAGE 2 OF 5 PAGES



VIEW OF COUNTRY CUPBOARD PROPERTY FROM STEPHEN SHORT SOUTH PROPERTY LINE
TO NORTHWEST CORNER OF HOLLY SPRING ROAD ALONG DELAWARE ROUTE 10



COUNTRY CUPBOARD STORE BUILDINGS SITUATED ON TAX PARCEL 21.00
WITH 178 FEET +/- FRONTING ROUTE 10 AND 314 FEET +/- FRONTING HOLLY SPRING ROAD



ALL INFORMATION SUBMITTED SUBJECT TO ERRORS AND MODIFICATIONS. ALL INFORMATION
CONTAINED HEREIN OBTAINED FROM RELIABLE SOURCES BUT NOT GUARANTEED. PROSPECTIVE
PURCHASERS SHOULD VERIFY ALL INFORMATION SUBMITTED. LISTING BROKERAGE REPRESENTS SELLER.
PAGE 3 OF 5 PAGES



VIEW SOUTH THROUGH HOLLY SPRING ROAD INTERSECTION
ALONG EAST SIDE WILLOW GROVE ROAD



FRONT VIEW EAST OF COUNTRY CUPBOARD BUILDINGS
TOTALING 4,668 SQUARE FEET



REAR VIEW EAST FROM HOLLY SPRING ROAD LOOKING SOUTH



VIEW ALONG SOUTH PROPERTY LINE OF STEPHEN SHORT PROPERTY
LOOKING EAST FROM WILLOW GROVE ROAD



VIEW ALONG NORTH PROPERTY LINE ON HOLLY SPRING ROAD
WESTERLY TOWARDS WILLOW GROVE ROAD