



MARBLE WORKS PROPERTY

12982 MENNONITE SCHOOL ROAD, GREENWOOD, SUSSEX COUNTY, DELAWARE 19950

OFFICE FILE# 213180 MLS# 6189002

FOR SALE

INDUSTRIAL / COMMERCIAL OR INVESTMENT PROPERTY



SALE PRICE \$ 800,000 * \$ 33.99 +/- PER SQUARE FOOT (BLD AREA)

6.5 ACRES WITH 23,536 SQUARE FEET OF BUILDING SPACE

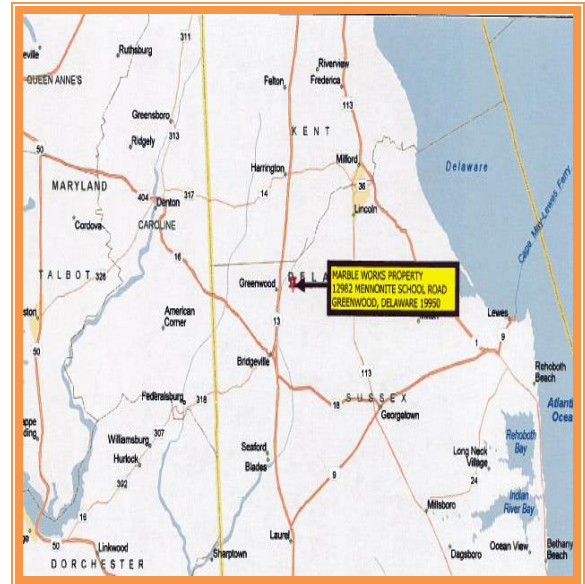
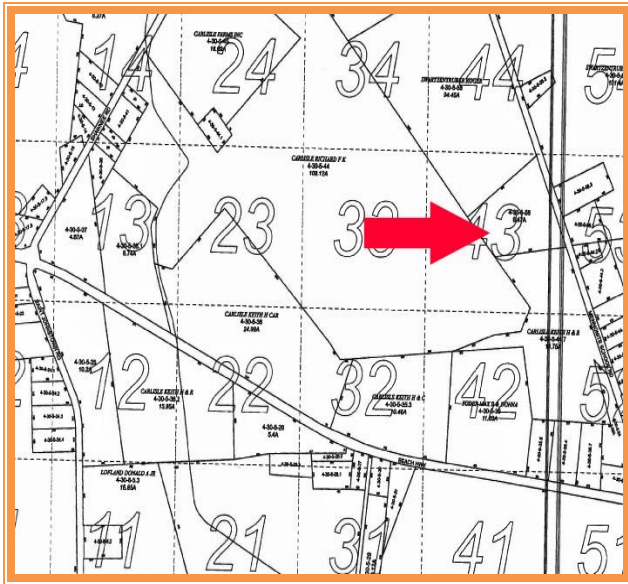
16,308 SQUARE FEET OF WAREHOUSE / MANUFACTURING SPACE

POTENTIAL RENTAL INCOME WITH MODERN RESIDENTIAL UNITS

ZONED A/R WITH CONDITIONAL USE APPROVAL FOR LIGHT MANUFACTURING

POSSIBLE USES INCLUDE WAREHOUSING, MANUFACTURING, CONTRACTOR

**ALL INFORMATION SUBMITTED SUBJECT TO ERRORS AND MODIFICATIONS. ALL INFORMATION
CONTAINED HEREIN OBTAINED FROM RELIABLE SOURCES BUT NOT GUARANTEED. PROSPECTIVE
PURCHASERS SHOULD VERIFY ALL INFORMATION SUBMITTED. LISTING BROKERAGE REPRESENTS SELLER.
PAGE 1 OF 3 PAGES**



ALL INFORMATION SUBMITTED SUBJECT TO ERRORS AND MODIFICATIONS. ALL INFORMATION CONTAINED HEREIN OBTAINED FROM RELIABLE SOURCES BUT NOT GUARANTEED. PROSPECTIVE PURCHASERS SHOULD VERIFY ALL INFORMATION SUBMITTED. LISTING BROKERAGE REPRESENTS SELLER.
PAGE 2 OF 3 PAGES

MARBLE WORKS PROPERTY
12982 Mennonite School Road
Greenwood, Sussex County, DE 19950
March 22, 2013

Tax Map Identification	430 5.00 56
Deed Reference	Book 3506 Page 153
Flood Zone	100029 0125J 1/6/2005, Class X
Zoning	AR-1 With Conditional Use
Census Tract	503.02
Land Area	6.47 Acres
Total Bldg Area (sq ft)	23,536 +/-
Land Assessed Value	\$12,900
Building Assessed Value	\$212,000.00
TOTAL PROPERTY TAX	\$4,500.80



FOR ADDITIONAL INFORMATION CONTACT:

CHUCK SPIEGELMAN
MCGINNIS COMMERCIAL REAL ESTATE
OFFICE: 302-736-2710
FAX: 302-736-2715
MOBILE: 302-632-0859
EMAIL: cs@mcginnisrealty.com

**ALL INFORMATION SUBMITTED SUBJECT TO ERRORS AND MODIFICATIONS. ALL INFORMATION
CONTAINED HEREIN OBTAINED FROM RELIABLE SOURCES BUT NOT GUARANTEED. PROSPECTIVE
PURCHASERS SHOULD VERIFY ALL INFORMATION SUBMITTED. LISTING BROKERAGE REPRESENTS SELLER.**
PAGE 3 OF 3 PAGES