



555 East Lookerman St.  
Dover, Delaware 19901

McGinnis Commercial Real Estate

Phone: 302.736.2710 Fax: 302.736.2715

www.mcginnisrealty.com

**MARBLE MANAGEMENT Property**  
**4495 North DuPont Highway, DOVER, KENT COUNTY, DELAWARE 19901**

OFFICE FILE# 213181 MLS# 6198393

**FOR SALE**  
Commercial Land for Sale



**SALE PRICE \$ 795,000 \* \$ 189,286 +/- PER ACRE**

**LOCATED 1/4 MILE FROM SUPER WAL-MART AND ADJACENT TO REDNERS MARKET  
IN CHESWOLD DELAWARE**

**4.2 ACRES WITH CLOSE TO 300 FEET OF FRONTAGE ON ROUTE 13**

**ENTRANCES ON ROUTE 13 AND ROSE BOWL LANE**

**ZONED GENERAL BUSINESS (BG) IN KENT COUNTY**

**COUNTY SEWER AVAILABLE**

**ALL INFORMATION SUBMITTED SUBJECT TO ERRORS AND MODIFICATIONS. ALL INFORMATION  
CONTAINED HEREIN OBTAINED FROM RELIABLE SOURCES BUT NOT GUARANTEED. PROSPECTIVE  
PURCHASERS SHOULD VERIFY ALL INFORMATION SUBMITTED. LISTING BROKERAGE REPRESENTS SELLER.  
PAGE 1 OF 4 PAGES**

**MARBLE MANAGEMENT PROPERTY**  
**4495 N. DuPont Hwy**  
**DOVER, KENT COUNTY, DE 19901**  
**April 15, 2013**

**Tax Map Identification** LC-00-046.04-01-46.00  
LC-00-046.04-01-46.02

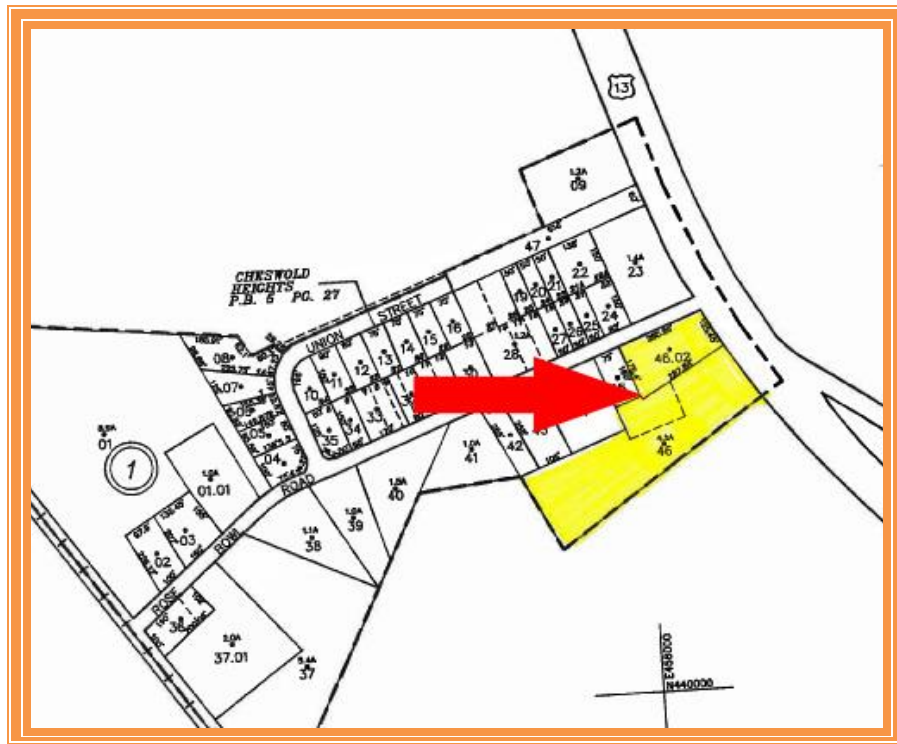
**Deed Reference** D194 296  
D3785 019

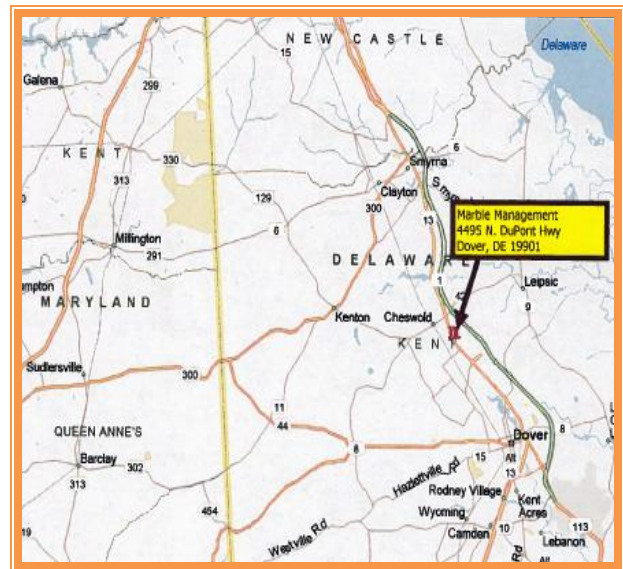
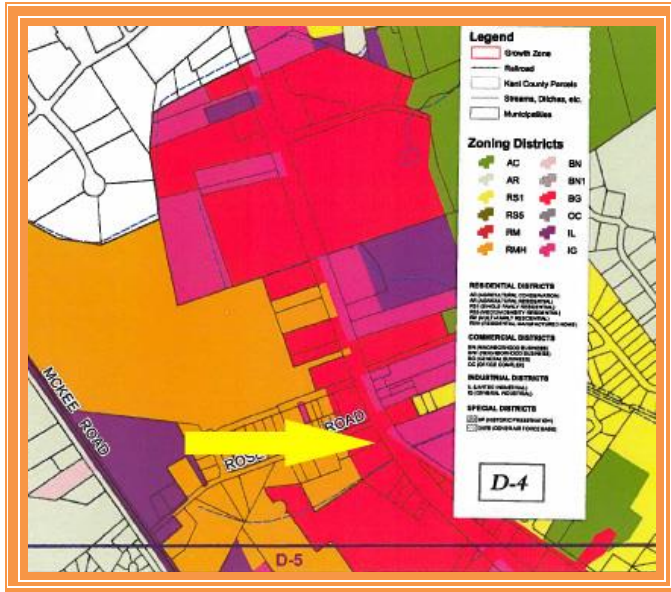
**Zoning** BG General Business  
Kent County

**Land Area** 4.25 Acres / 185,130 Square feet  
**Frontage** 295 +/- Feet

**County Tax 2012** \$1,841.51

**TOTAL PROPERTY TAX** \$1,841.51





FOR ADDITIONAL INFORMATION CONTACT:

**CHUCK SPIEGELMAN**  
**ASSOCIATE BROKER**  
**MCGINNIS COMMERCIAL REAL ESTATE**

**OFFICE: 302-736-2710**

**FAX: 302-736-2715**

**MOBILE: 302-632-0859**

**EMAIL: [cs@mcginnisrealty.com](mailto:cs@mcginnisrealty.com)**

**ALL INFORMATION SUBMITTED SUBJECT TO ERRORS AND MODIFICATIONS. ALL INFORMATION CONTAINED HEREIN OBTAINED FROM RELIABLE SOURCES BUT NOT GUARANTEED. PROSPECTIVE PURCHASERS SHOULD VERIFY ALL INFORMATION SUBMITTED. LISTING BROKERAGE REPRESENTS SELLER.**  
**PAGE 3 OF 4 PAGES**

