

JOHNSON ROUTE 8 LAND PROPERTY
1310-1324 FORREST AVENUE, DOVER, KENT COUNTY, DELAWARE 19904

OFFICE FILE# 213185 MILS# 6229800

FOR SALE
2.6 ACRES OF COMMERCIAL LAND



SALE PRICE \$ 695,000 * \$ 267,300 +/- PER ACRE

C2-A ZONING ALLOWS RETAIL, OFFICE, RESTAURANT, APT BUILDINGS

TRAFFIC COUNTS IN EXCESS OF 16,000 PER DAY

235 FEET OF FRONTAGE ON BUSY ROUTE 8 (FORREST AVENUE)

LOCATED IN THE CENTER OF WEST DOVER'S RETAIL CORRIDOR

**ALL INFORMATION SUBMITTED SUBJECT TO ERRORS AND MODIFICATIONS. ALL INFORMATION
CONTAINED HEREIN OBTAINED FROM RELIABLE SOURCES BUT NOT GUARANTEED. PROSPECTIVE
PURCHASERS SHOULD VERIFY ALL INFORMATION SUBMITTED. LISTING BROKERAGE REPRESENTS SELLER.
PAGE 1 OF 3 PAGES**

JOHNSON ROUTE 8 LAND
1310-1324 FORREST AVE
DOVER, KENT COUNTY, DE 19904
June 3, 2013

Tax Map Identification ED-05-07610-01-0100
ED-05-07610-01-0200
ED-05-07610-01-0300
ED-05-07610-01-0400
ED-05-07610-01-0401

Deed Reference WC 010 006
IS 023 105
H 049 291

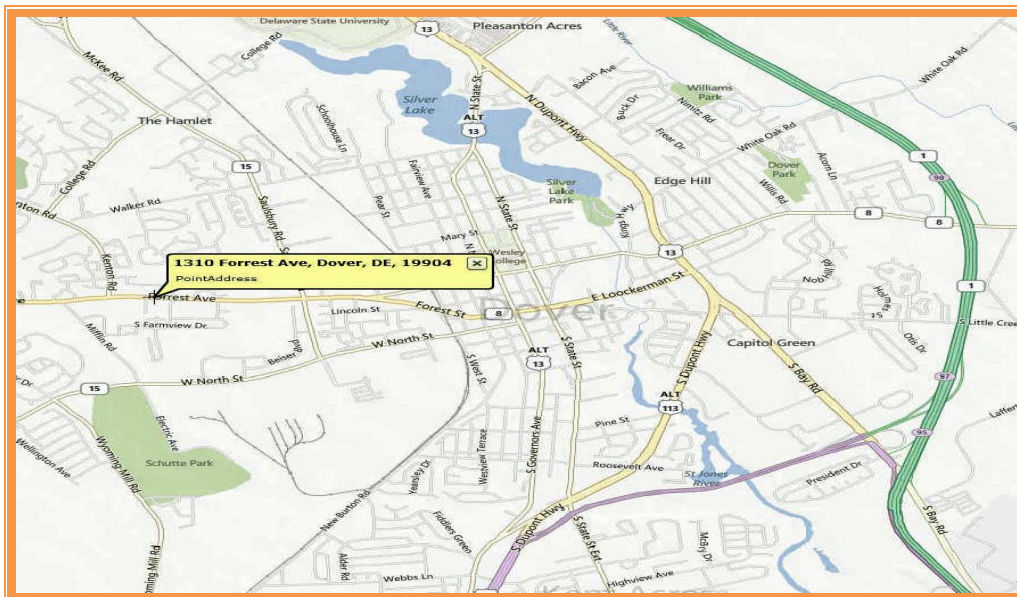
Zoning C2A CENTRAL COMMERCIAL
City of Dover

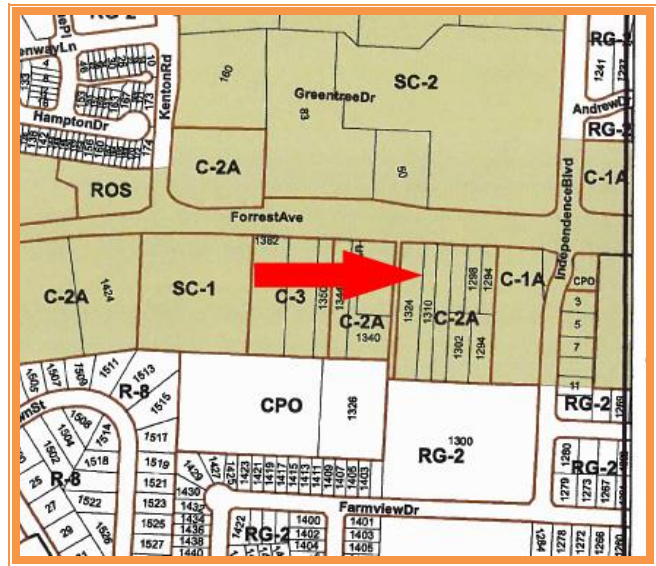
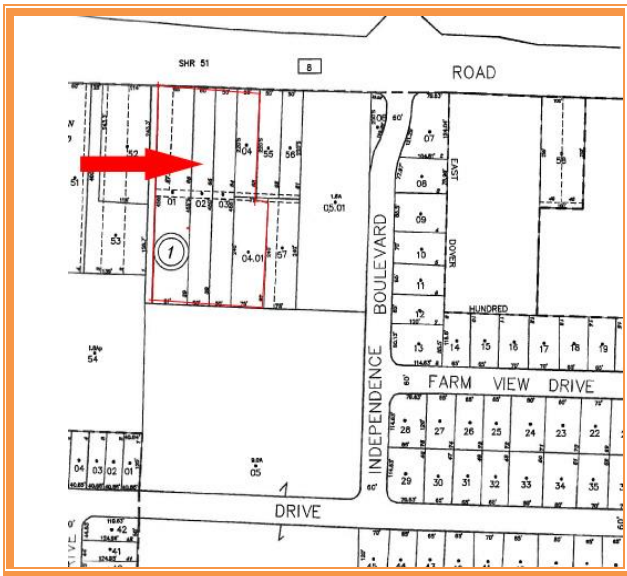
Land Area 2.61 +/- Acres
Frontage 235 +/- Ft
Depth 455 +/- Ft

City Tax 2012 \$673

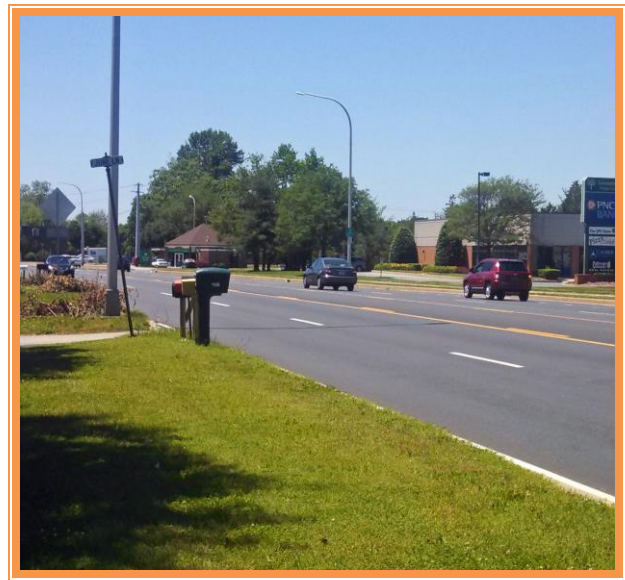
County Tax 2012 \$2,111.52

TOTAL PROPERTY TAX \$2,784.52





VIEW LOOKING EAST



VIEW LOOKING WEST

FOR ADDITIONAL INFORMATION CONTACT:

CHUCK SPIEGELMAN, ASSOCIATE BROKER
MCGINNIS COMMERCIAL REAL ESTATE

OFFICE: 302-736-2710

FAX: 302-736-2715

MOBILE: 302-632-0859

EMAIL: cs@mcginnisrealty.com

ALL INFORMATION SUBMITTED SUBJECT TO ERRORS AND MODIFICATIONS. ALL INFORMATION CONTAINED HEREIN OBTAINED FROM RELIABLE SOURCES BUT NOT GUARANTEED. PROSPECTIVE PURCHASERS SHOULD VERIFY ALL INFORMATION SUBMITTED. LISTING BROKERAGE REPRESENTS SELLER.
PAGE 3 OF 3 PAGES