



555 East Lookerman St.
Dover, Delaware 19901

Phone: 302.736.2710 Fax: 302.736.2715

www.mcginnisrealty.com

HARRIS DUPONT HWY PROPERTY

1300 DUPONT HIGHWAY, SMYRNA, KENT COUNTY, DELAWARE 19977

OFFICE FILE# 214201 MILS# 6332525

FOR SALE

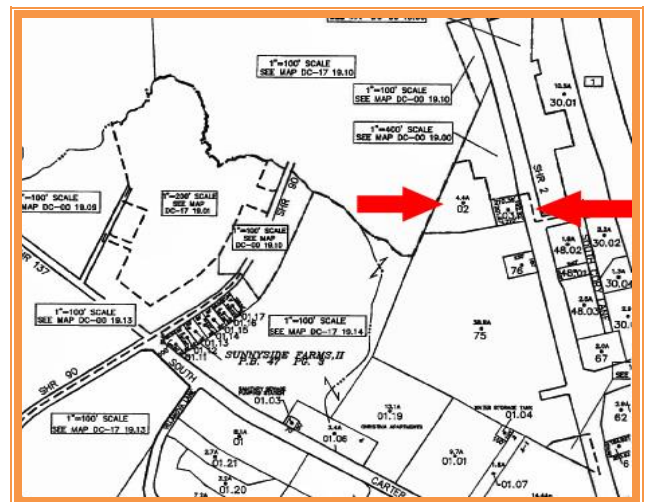
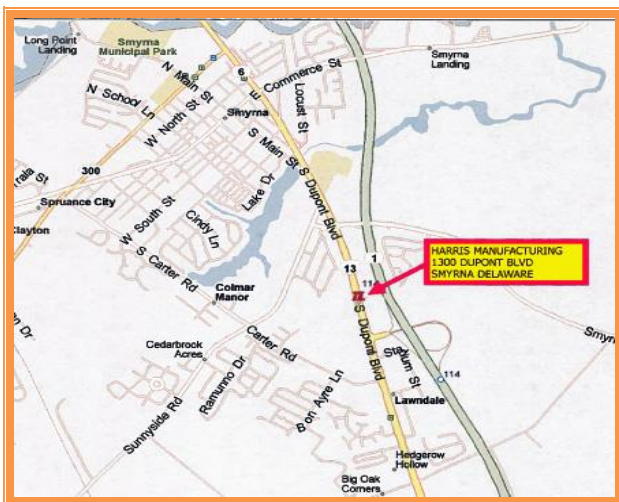
INDUSTRIAL / COMMERCIAL / MANUFACTURING PROPERTY



SALE PRICE \$ 1,395,000 * \$ 87.19 +/- PER SQUARE FOOT (BLD AREA)

- 5.32 ACRES WITH 16,000 SQUARE FEET OF BUILDING SPACE
- CURRENTLY MANUFACTURING UNDER GOVERNMENT CONTRACT
- 200 FEET OF FRONTAGE ON BUSY US ROUTE 13
- DIRECT ACCESS TO US ROUTE 13 AND ROUTE 1 INTERCHANGE
- USES INCLUDE MANUFACTURING, WAREHOUSING OR DEVELOPMENT
- JOIN WA-WA, HARDEES, CONCORD PET AND WALGREENS

ALL INFORMATION SUBMITTED SUBJECT TO ERRORS AND MODIFICATIONS. ALL INFORMATION CONTAINED HEREIN OBTAINED FROM RELIABLE SOURCES BUT NOT GUARANTEED. PROSPECTIVE PURCHASERS SHOULD VERIFY ALL INFORMATION SUBMITTED. LISTING BROKERAGE REPRESENTS SELLER.
PAGE 1 OF 3 PAGES



ALL INFORMATION SUBMITTED SUBJECT TO ERRORS AND MODIFICATIONS. ALL INFORMATION CONTAINED HEREIN OBTAINED FROM RELIABLE SOURCES BUT NOT GUARANTEED. PROSPECTIVE PURCHASERS SHOULD VERIFY ALL INFORMATION SUBMITTED. LISTING BROKERAGE REPRESENTS SELLER.
PAGE 2 OF 3 PAGES

HARRIS DUPONT HWY PROPERTY
1300 DUPONT BOULEVARD
Smyrna, Kent County, DE 19977
January 27, 2014

Tax Map Identification	1-17-01900-01-0200 1-17-01900-01-0300
Deed Reference	D 3325 161
Highway Frontage	200 +/- feet
Zoning	M- Manufacturing Town Of Smyrna
Total Land Area	5.32 +/- Acres
Total Bldg Area (sq ft)	16,000 +/- Sq Ft
Land Assessed Value	\$67,800
Building Assessed Value	\$123,500.00
2013 TOTAL PROPERTY TAX	\$5,747.20

FOR ADDITIONAL INFORMATION CONTACT:

CHUCK SPIEGELMAN, ASSOCIATE BROKER
MCGINNIS COMMERCIAL REAL ESTATE
OFFICE: 302-736-2710
FAX: 302-736-2715
MOBILE: 302-632-0859
EMAIL: cs@mcginnisrealty.com

**ALL INFORMATION SUBMITTED SUBJECT TO ERRORS AND MODIFICATIONS. ALL INFORMATION
CONTAINED HEREIN OBTAINED FROM RELIABLE SOURCES BUT NOT GUARANTEED. PROSPECTIVE
PURCHASERS SHOULD VERIFY ALL INFORMATION SUBMITTED. LISTING BROKERAGE REPRESENTS SELLER.**
PAGE 3 OF 3 PAGES