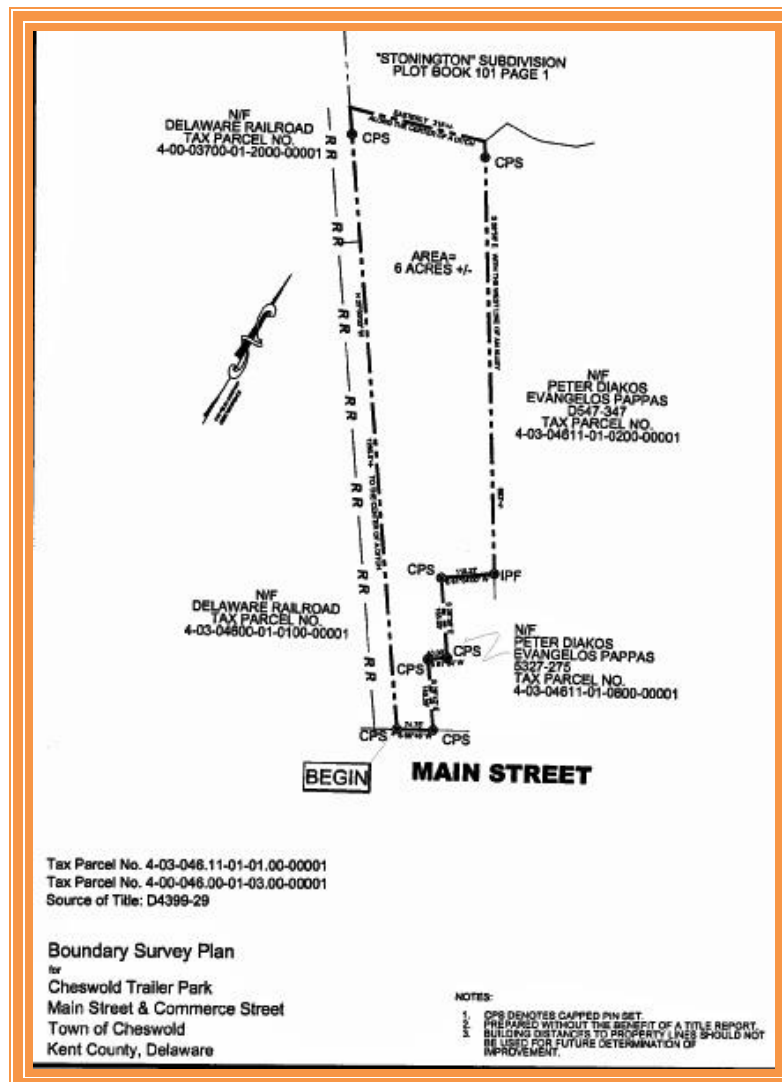


AUTUMN WOODS MOBILE HOME PARK
100 MAIN STREET, CHESWOLD, KENT COUNTY, DELAWARE 19904

OFFICE FILE# 214199 MLS# 6329732

FOR SALE

37 UNIT MOBILE HOME PARK WITH COUNTY SEWER



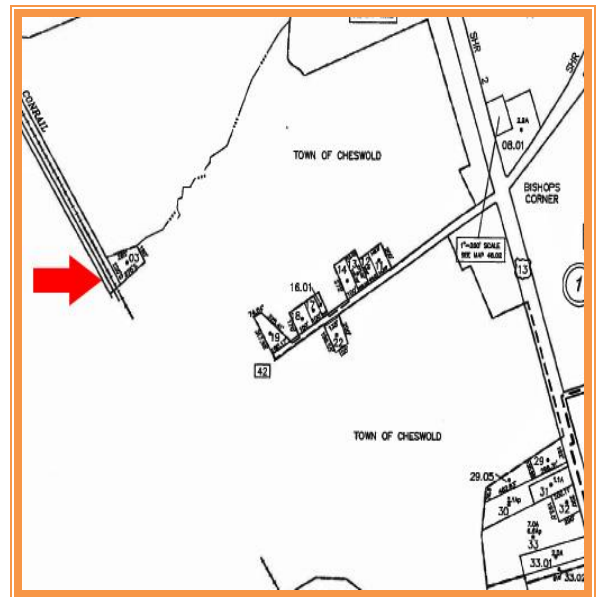
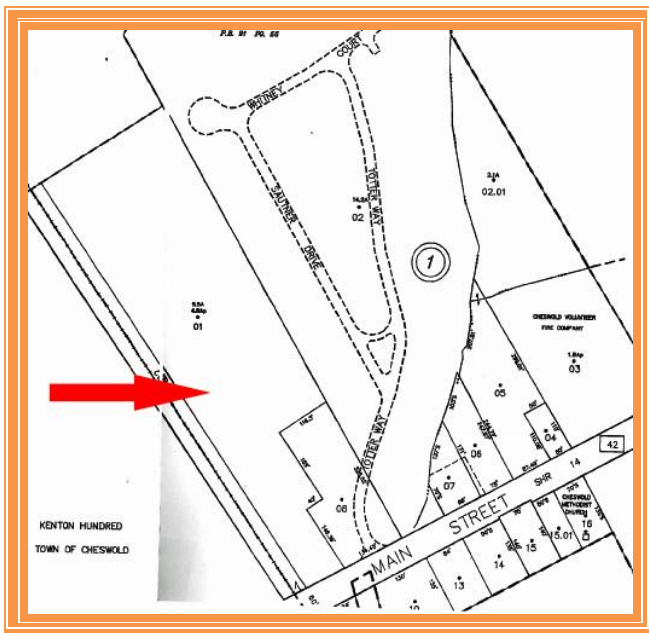
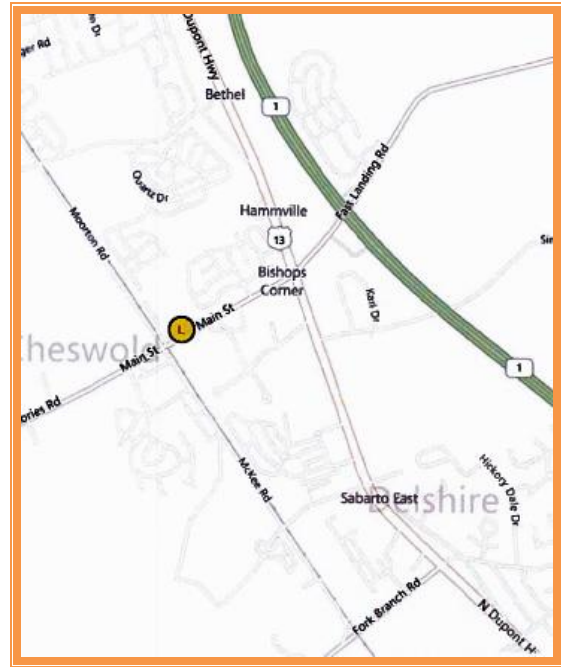
SALE PRICE \$ 810,000 * \$ 21,900 +/- PER UNIT

**ALL INFORMATION SUBMITTED SUBJECT TO ERRORS AND MODIFICATIONS. ALL INFORMATION
CONTAINED HEREIN OBTAINED FROM RELIABLE SOURCES BUT NOT GUARANTEED. PROSPECTIVE
PURCHASERS SHOULD VERIFY ALL INFORMATION SUBMITTED. LISTING BROKERAGE REPRESENTS SELLER.
PAGE 1 OF 3 PAGES**

6 ACRES AND 37 MOBILE HOME SPACES IN PLACE
COUNTY WATER AND SEWER
CONVENIENT LOCATION IN CHESWOLD (DOVER) DELAWARE
LOCATED ONE MILE FROM THE US 13 & 42 INTERSECTION

AUTUMN WOODS MHP
100 MAIN STREET
CHESWOLD, KENT COUNTY, DE 19936
January 21, 2014

| | |
|-------------------------------|--|
| Tax Map Identification | LC-03-04611-01-0100 LC-00-04600-01-0300 |
| Deed Reference | D 7027 296 |
| Zoning | BG- Town of Cheswold MHP Approval |
| Land Area | 6+/- Acres |
| Frontage | On Main Street |
| Depth | 1,100 +/- Feet |
| City Taxes 2013 | \$398 |
| County Taxes 2013 | \$786.00 |
| TOTAL PROPERTY TAX | \$1,184.00 |



FOR ADDITIONAL INFORMATION CONTACT:

CHUCK SPIEGELMAN, ASSOCIATE BROKER
MCGINNIS COMMERCIAL REAL ESTATE

OFFICE: 302-736-2710

FAX: 302-736-2715

MOBILE: 302-632-0859

EMAIL: cs@mcginnisrealty.com

ALL INFORMATION SUBMITTED SUBJECT TO ERRORS AND MODIFICATIONS. ALL INFORMATION CONTAINED HEREIN OBTAINED FROM RELIABLE SOURCES BUT NOT GUARANTEED. PROSPECTIVE PURCHASERS SHOULD VERIFY ALL INFORMATION SUBMITTED. LISTING BROKERAGE REPRESENTS SELLER.
PAGE 3 OF 3 PAGES