



**555 East Loockerman St.
Dover, Delaware 19901**

McGinnis Commercial Real Estate Phone: 302.736.2710 Fax: 302.736.2715
www.mcginnisrealty.com

THE BOONDOCKS RESTAURANT PROPERTY
825 LIGHTHOUSE ROAD, SMYRNA, KENT COUNTY, DELAWARE 19977
OFFICE FILE # : 214216 * MLS # : 6477792



8,000 SQUARE FOOT RESTAURANT FOR SALE

SALE PRICE \$699,000 * \$ 87.4 +/- PER SQUARE FOOT

TURN KEY RESTAURANT ESTABLISHED 1972

3 DINING ROOMS WITH CAPACITY OF 400 +

ALL EQUIPMENT IN PLACE

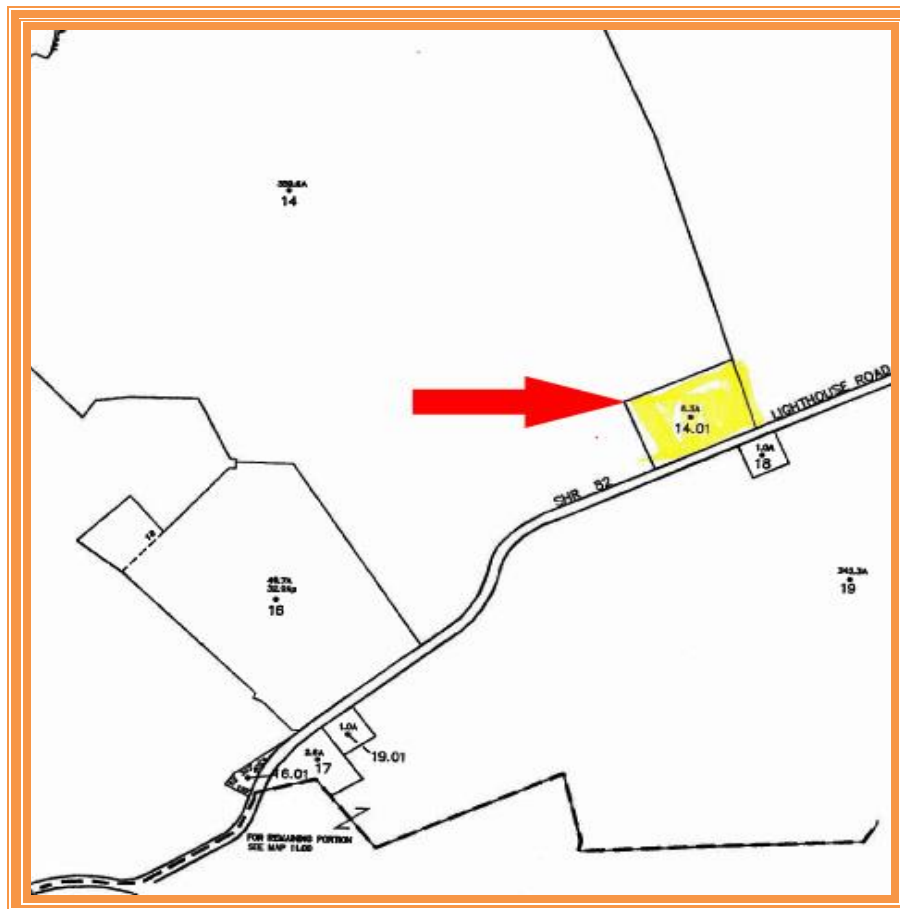
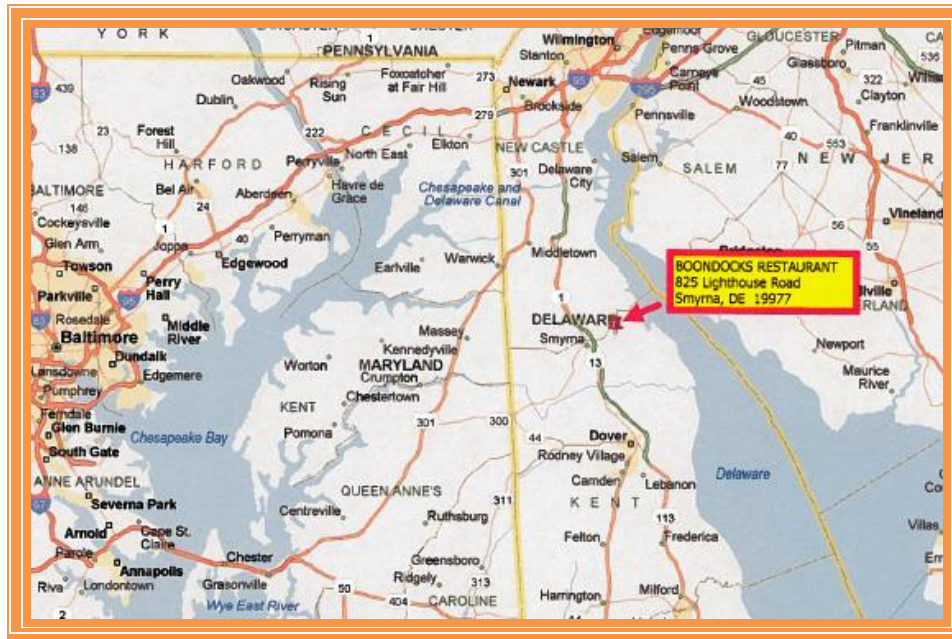
INCLUDES PACKAGE STORE LICENSE

ROOM FOR EXPANSION WITH 6+ ACRES

GREAT HUNTING LODGE, SPORTS BAR, HALL RENTAL.

OWNER RETIRING

**ALL INFORMATION SUBMITTED SUBJECT TO ERRORS AND MODIFICATIONS. ALL INFORMATION
 CONTAINED HEREIN OBTAINED FROM RELIABLE SOURCES BUT NOT GUARANTEED. PROSPECTIVE
 PURCHASERS SHOULD VERIFY ALL INFORMATION SUBMITTED. LISTING BROKERAGE REPRESENTS SELLER.
 PAGE 1 OF 4 PAGES**



ALL INFORMATION SUBMITTED SUBJECT TO ERRORS AND MODIFICATIONS. ALL INFORMATION CONTAINED HEREIN OBTAINED FROM RELIABLE SOURCES BUT NOT GUARANTEED. PROSPECTIVE PURCHASERS SHOULD VERIFY ALL INFORMATION SUBMITTED. LISTING BROKERAGE REPRESENTS SELLER.
PAGE 2 OF 4 PAGES



ALL INFORMATION SUBMITTED SUBJECT TO ERRORS AND MODIFICATIONS. ALL INFORMATION CONTAINED HEREIN OBTAINED FROM RELIABLE SOURCES BUT NOT GUARANTEED. PROSPECTIVE PURCHASERS SHOULD VERIFY ALL INFORMATION SUBMITTED. LISTING BROKERAGE REPRESENTS SELLER.
PAGE 3 OF 4 PAGES

**BOONDOCKS RESTAURANT
PROPERTY
825 Lighthouse Road
Smyrna, Kent County, DE 19977
October 24, 2014**

Tax Map Identification DC-00-003.00-01-14.01-00001

Deed Reference M 47 54, N 37 286

Zoning B - G, General Business, Kent County

Land Area 274,559 sq ft +/- 6.303 acre

Frontage 600.00 ft +/-

Depth 450.00 ft +/-

Bldg Area (sq ft) 7,950 sq ft +/-

Parking Spaces 100+

**County Tax
Assessment** \$115,900

Total Taxes 2013 \$2,449.54

For Additional Information Contact:

**CHARLES SPIEGELMAN, ASSOCIATE BROKER
McGinnis Commercial Real Estate Company
Office Direct: 302-736-2710
Mobile: 302-632-0859
Fax: 302-736-2715
Email: cs@mcginnisrealty.com**