



555 East Lookerman St.
Dover, Delaware 19901

McGinnis Commercial Real Estate

Phone: 302.736.2710 Fax: 302.736.2715

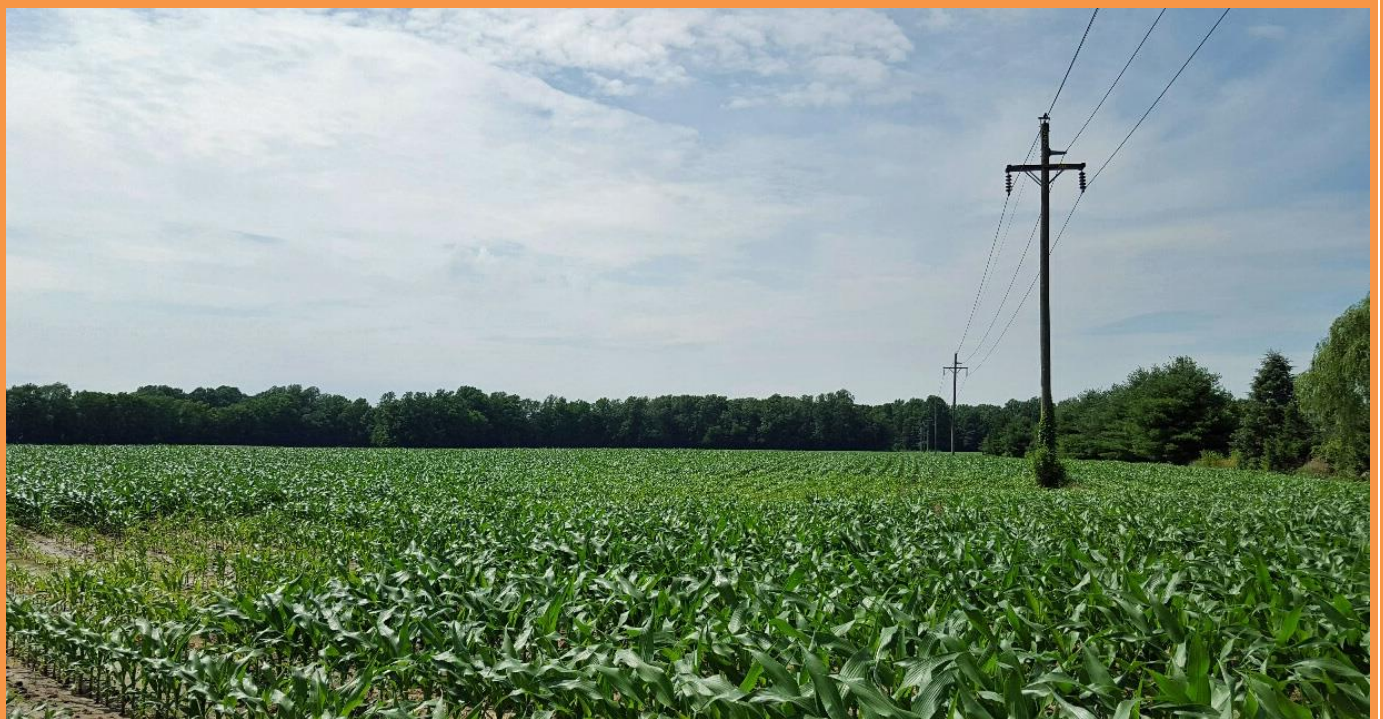
www.mcginnisrealty.com

MITCHELL DRAPER FARM PROPERTY
FORREST AVENUE, DOVER, KENT COUNTY, DELAWARE 19901

OFFICE FILE# 215237

FOR SALE

89.2 +/- ACRE FARM IN DOVER, KENT COUNTY, DELAWARE



SALE PRICE \$ 759,000 * \$ 8,500 +/- PER ACRE

CROP FARM IN AGLAND PRESERVATION

TWO PARCELS TOTALING 89.2 +/- ACRES

CONVENIENT WEST DOVER LOCATION

**ALL INFORMATION SUBMITTED SUBJECT TO ERRORS AND MODIFICATIONS. ALL INFORMATION
CONTAINED HEREIN OBTAINED FROM RELIABLE SOURCES BUT NOT GUARANTEED. PROSPECTIVE
PURCHASERS SHOULD VERIFY ALL INFORMATION SUBMITTED. LISTING BROKERAGE REPRESENTS SELLER.
PAGE 1 OF 3 PAGES**

MITCHELL DRAPER FARM PROPERTY
FORREST AVENUE
DOVER, KENT COUNTY DELAWARE
June 22, 2015

Tax Map Identification 2-05-07500-01-01 & 02

Deed Reference D 7280 114

Zoning AGLAND PRESERVATION
City of Dover/Kent County

Land Area 89.2 +/-
Acres

Property Class Farmland

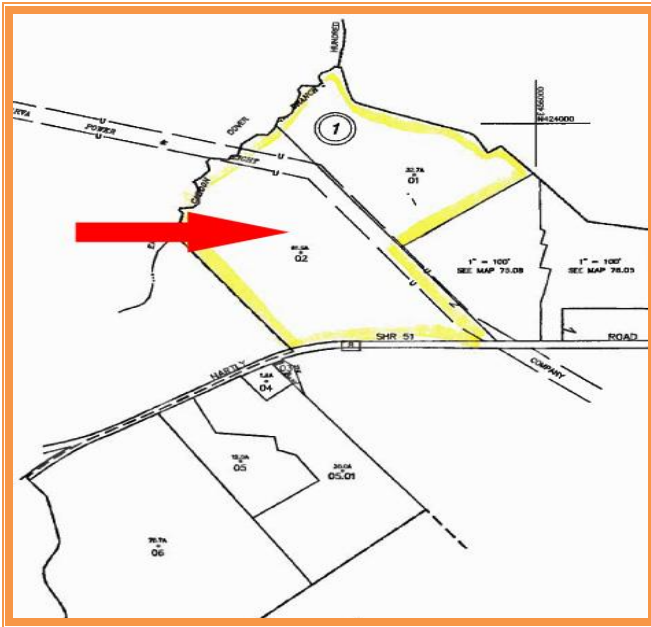
Map Grid 8202500

Structures None

School District Dover

TOTAL PROPERTY TAX 2014 \$0.00





VIEW LOOKING EAST



VIEW LOOKING WEST

FOR ADDITIONAL INFORMATION CONTACT:

**CHUCK SPIEGELMAN, ASSOCIATE BROKER
MCGINNIS COMMERCIAL REAL ESTATE**

OFFICE: 302-736-2710

FAX: 302-736-2715

MOBILE: 302-632-0859

EMAIL: cs@mcginnisrealty.com

**ALL INFORMATION SUBMITTED SUBJECT TO ERRORS AND MODIFICATIONS. ALL INFORMATION CONTAINED HEREIN OBTAINED FROM RELIABLE SOURCES BUT NOT GUARANTEED. PROSPECTIVE PURCHASERS SHOULD VERIFY ALL INFORMATION SUBMITTED. LISTING BROKERAGE REPRESENTS SELLER.
PAGE 3 OF 3 PAGES**