



555 East Lookerman St.
Dover, Delaware 19901

Phone: 302.736.2710 Fax: 302.736.2715

www.mcginnisrealty.com

BANE BOX OUTLET PROPERTY
446 SOUTH GOVERNORS AVENUE, DOVER, KENT COUNTY, DELA 19904
OFFICE FILE #215242 * MLS # 6931643



SALE PRICE \$ 455,000
\$ 50. +/- PER SQ FT BLDG AREA * \$ 20. +/- PER SQ FT LAND AREA



ALL INFORMATION SUBMITTED SUBJECT TO ERRORS AND MODIFICATIONS. ALL INFORMATION
CONTAINED HEREIN OBTAINED FROM RELIABLE SOURCES BUT NOT GUARANTEED. PROSPECTIVE PURCHASERS
SHOULD VERIFY ALL INFORMATION SUBMITTED. LISTING BROKERAGE REPRESENTS SELLER.

Tax Map Identification ED05 - 077.09 - 03 - 21.00

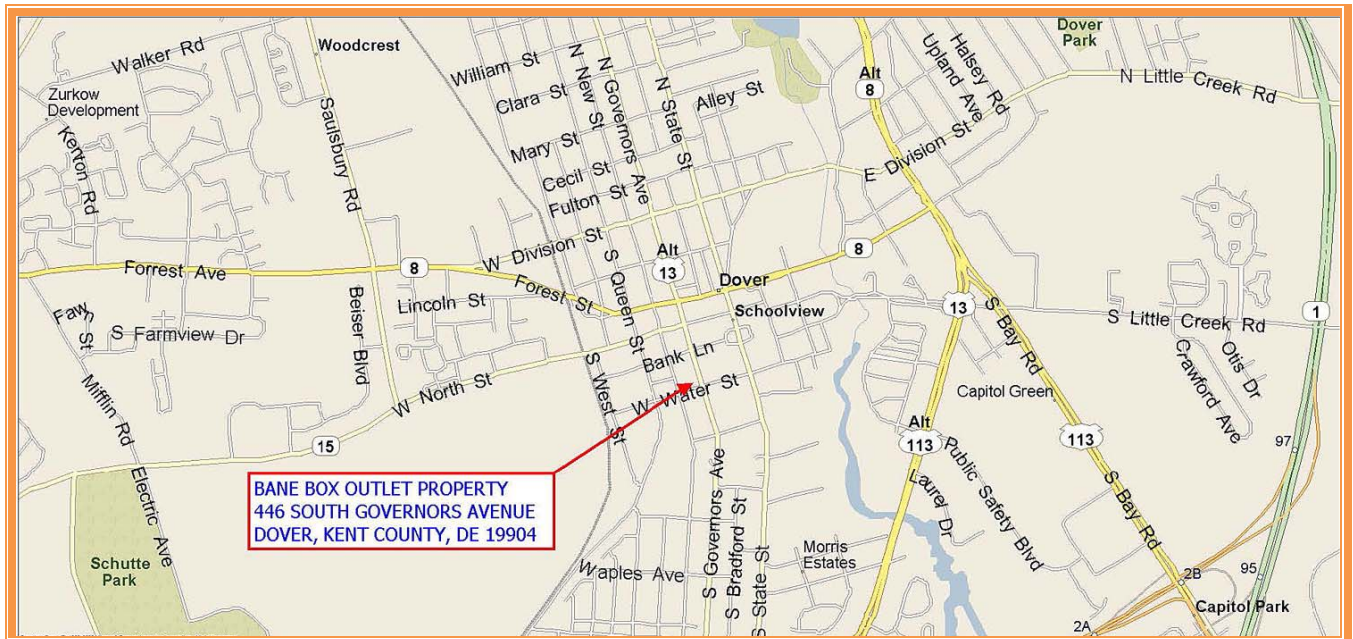
Deed Reference D643 - 036

Zoning C-2A, LIMITED CENTRAL COMMERCIAL, CITY OF DOVER

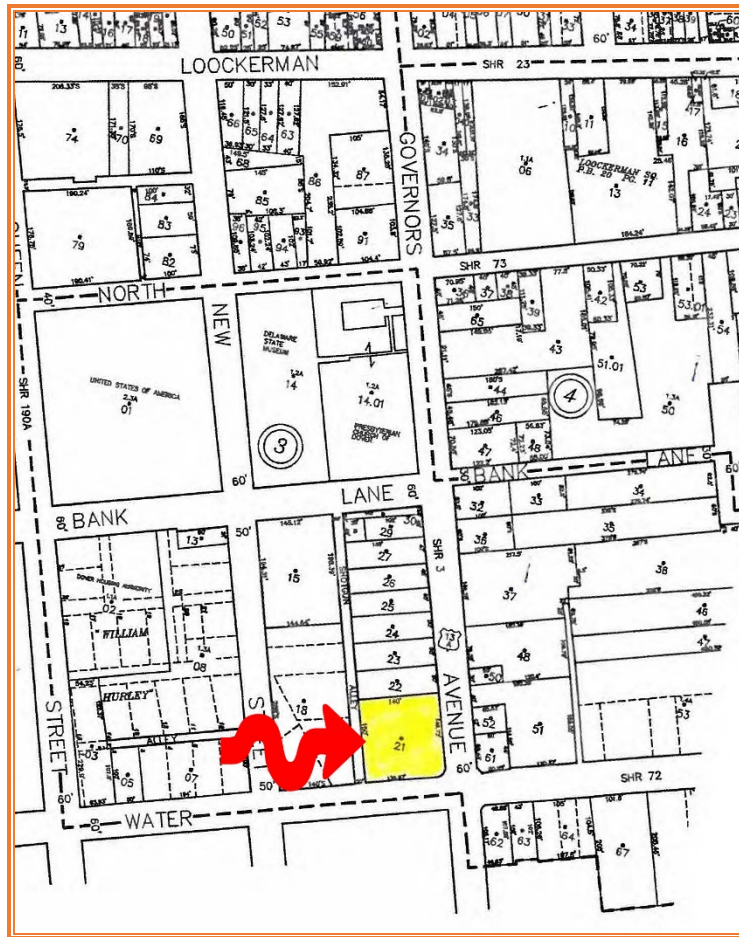
Census Tract 414

Flood Hazard Map 10001C0169H; ZONE X; July 7, 2014

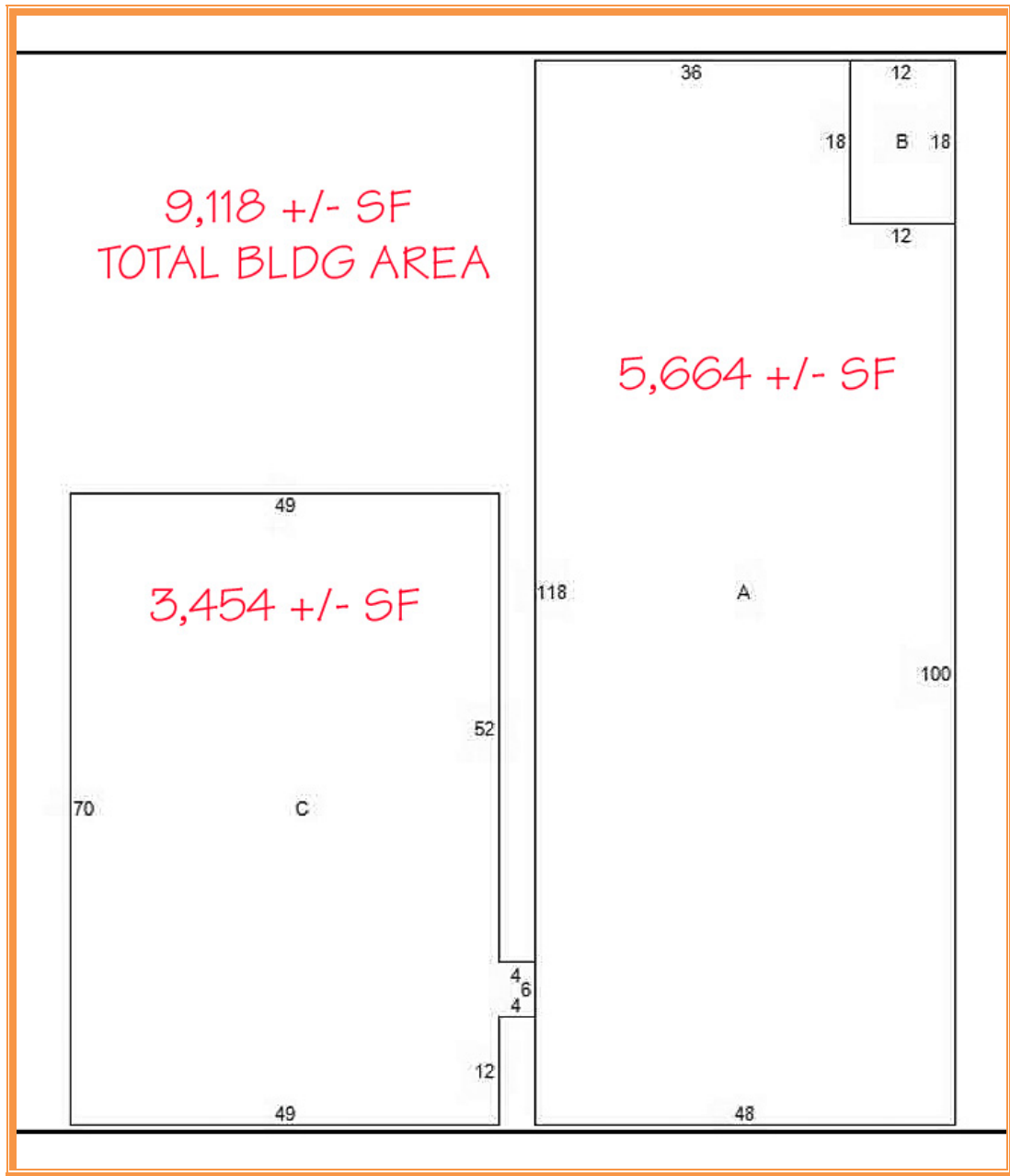
Land Area		22,450	sq ft +/-	0.515	acres
Frontage	150.60	ft +/-			
Depth	147.55	ft +/-			
Building Area, TOTAL		9,118	sq ft +/-		
Width	49	ft +/-			
Depth	70	ft +/-			
BUILDING 1		3,454	sq ft +/-		
Width	48	ft +/-			
Depth	118	ft +/-			
BUILDING 2		5,664	sq ft +/-		
COVERAGE RATIO		40.61%			
PARKING SPACES	16				
PARKING RATIO		0.52	PER 300 SF BLDG AREA		
City Tax Assessment					
\$606,800	Per SF Bldg	Rate	Tax	Per SF Bldg	
	\$66.55	\$0.405	\$2,457.54	\$0.27	
County Tax Assessment					
\$102,200	Per SF Bldg	Rate	Tax	Per SF Bldg	
	\$11.21	\$2.2549	\$2,304.51	\$0.25	
TOTAL PROPERTY TAX			\$4,762.05	\$0.52	



ALL INFORMATION SUBMITTED SUBJECT TO ERRORS AND MODIFICATIONS. ALL INFORMATION
CONTAINED HEREIN OBTAINED FROM RELIABLE SOURCES BUT NOT QUARANTEED. PROSPECTIVE PURCHASERS
SHOULD VERIFY ALL INFORMATION SUBMITTED. LISTING BROKERAGE REPRESENTS SELLER.



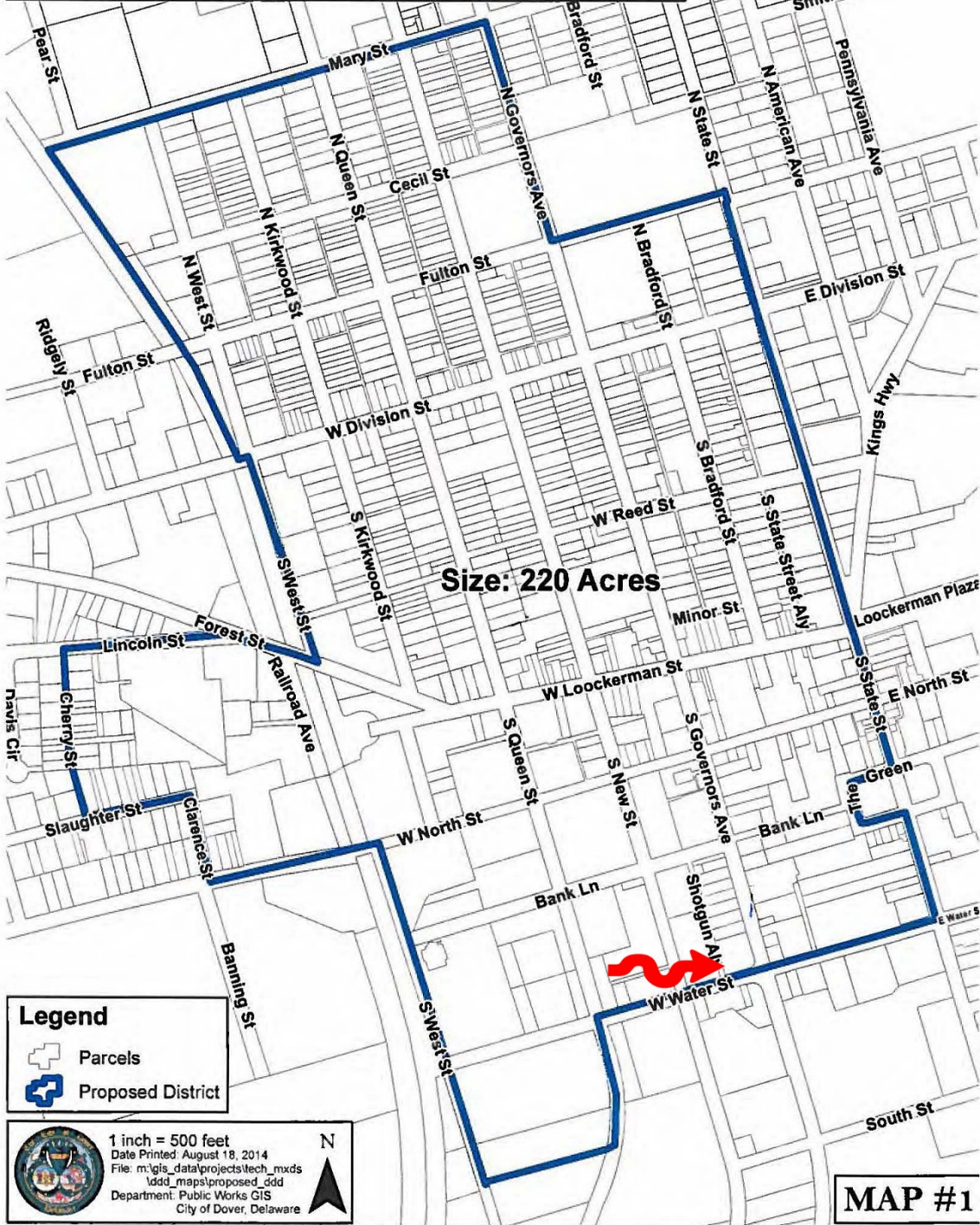
ALL INFORMATION SUBMITTED SUBJECT TO ERRORS AND MODIFICATIONS. ALL INFORMATION CONTAINED HEREIN OBTAINED FROM RELIABLE SOURCES BUT NOT GUARANTEED. PROSPECTIVE PURCHASERS SHOULD VERIFY ALL INFORMATION SUBMITTED. LISTING BROKERAGE REPRESENTS SELLER.





ALL INFORMATION SUBMITTED SUBJECT TO ERRORS AND MODIFICATIONS. ALL INFORMATION CONTAINED HEREIN OBTAINED FROM RELIABLE SOURCES BUT NOT GUARANTEED. PROSPECTIVE PURCHASERS SHOULD VERIFY ALL INFORMATION SUBMITTED. LISTING BROKERAGE REPRESENTS SELLER.

Downtown Development District Boundary



ALL INFORMATION SUBMITTED SUBJECT TO ERRORS AND MODIFICATIONS. ALL INFORMATION CONTAINED HEREIN OBTAINED FROM RELIABLE SOURCES BUT NOT QUARANTEED. PROSPECTIVE PURCHASERS SHOULD VERIFY ALL INFORMATION SUBMITTED. LISTING BROKERAGE REPRESENTS SELLER.