



MCDANIEL BUSINESS PARK PROPERTY, SUITE 1300

1300 McDaniel Drive, Dover, Kent County, Delaware 19901

OFFICE FILE #213193

OFFICE / MEDICAL / PROFESSIONAL SPACE FOR LEASE

2,800 SQUARE FOOT OFFICE SPACE FOR LEASE IN DOVER DELAWARE

5 BATHROOMS, KITCHENETTE, DATA ROOM

FREE STANDING BUILDING WITH SECURE FENCED PARKING AREA

AVAILABLE IMMEDIATELY



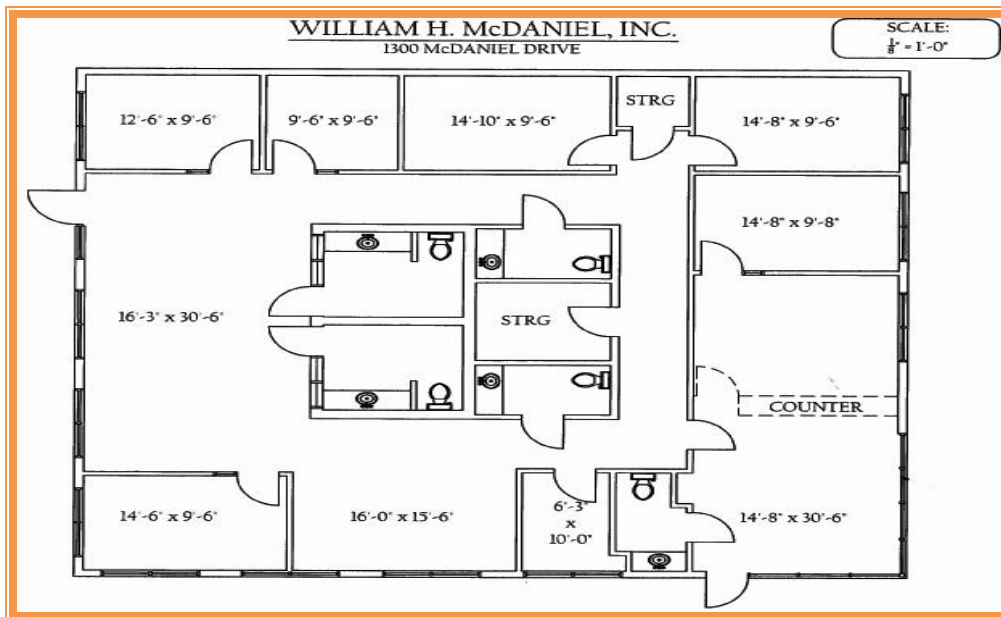
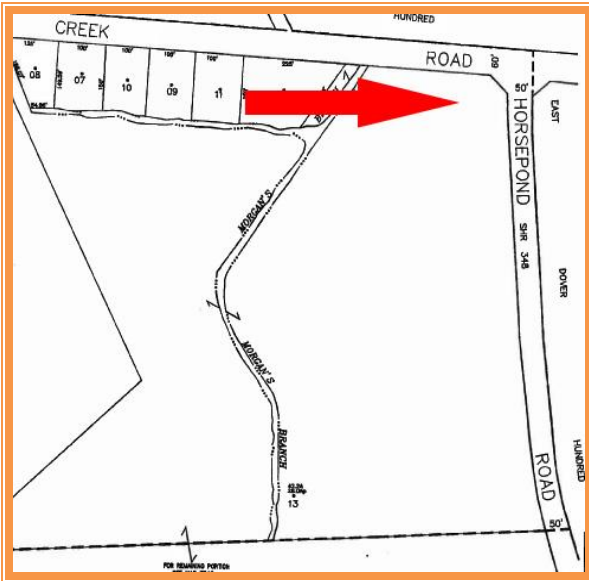
PREVIOUSLY OCCUPIED BY US IMMIGRATION AND CUSTOMS

LOCATED CLOSE TO ROUTE 13, ROUTE 1 AND DOWNTOWN DOVER

AVAILABLE FOR \$2,800 PER MONTH, NET

\$12.00 PER SQUARE FOOT

ALL INFORMATION SUBMITTED SUBJECT TO ERRORS AND MODIFICATIONS. ALL INFORMATION CONTAINED HEREIN OBTAINED FROM RELIABLE SOURCES BUT NOT GUARANTEED. PROSPECTIVE PURCHASERS SHOULD VERIFY ALL INFORMATION SUBMITTED. LISTING BROKERAGE REPRESENTS SELLER.
PAGE 1 OF 2 PAGES



For Additional Information Contact:

CHUCK SPIEGELMAN
ASSOCIATE BROKER
MCGINNIS COMMERCIAL REAL ESTATE
OFFICE: 302-736-2710
FAX: 302-736-2715
MOBILE: 302-632-0859
EMAIL: cs@mcginnisrealty.com

ALL INFORMATION SUBMITTED SUBJECT TO ERRORS AND MODIFICATIONS. ALL INFORMATION CONTAINED HEREIN OBTAINED FROM RELIABLE SOURCES BUT NOT GUARANTEED. PROSPECTIVE PURCHASERS SHOULD VERIFY ALL INFORMATION SUBMITTED. LISTING BROKERAGE REPRESENTS SELLER.
PAGE 2 OF 2 PAGES