



555 East Lookerman St.
Dover, Delaware 19901

McGinnis Commercial Real Estate

Phone: 302.736.2710 Fax: 302.736.2715

www.mcginnisrealty.com

MCDANIEL BUSINESS PARK PROPERTY, SUITE 1295

1295 MCDANIEL DRIVE, DOVER, KENT COUNTY, DELAWARE 19901

OFFICE FILE #213192

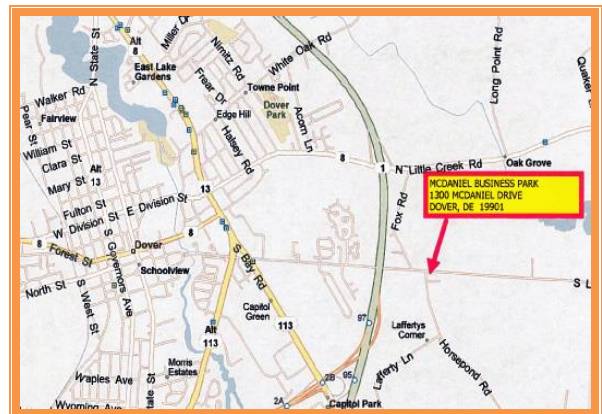
OFFICE / WAREHOUSE SPACE FOR LEASE

1,830 SQUARE FOOT FLEX SPACE IN DOVER DELAWARE

OFFICE HAS BATHROOM WITH SHOWER AND KITCHENETTE

WAREHOUSE HAS OVERHEAD DOOR AT GRADE

ADEQUATE ON SITE PARKING



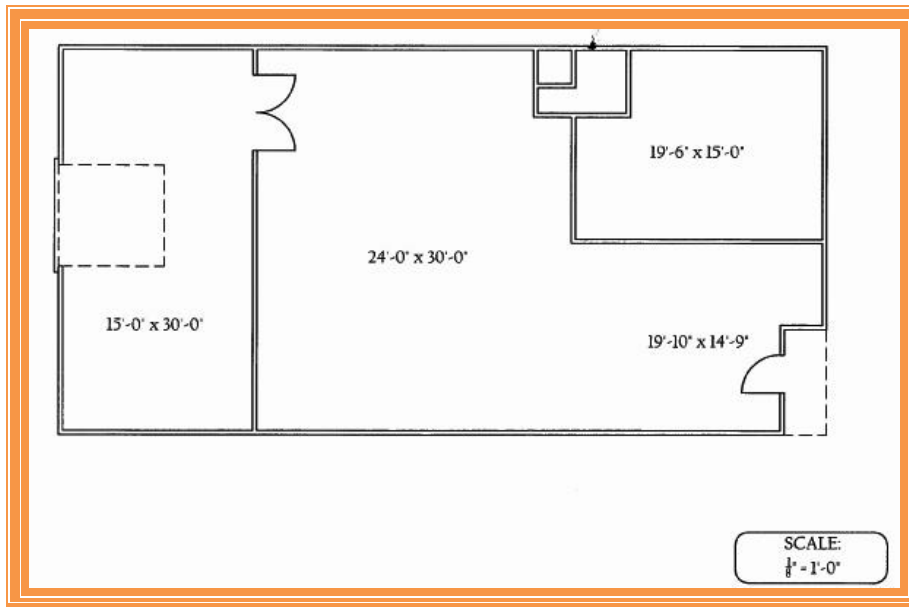
MODERN BLOCK BUILDING

CLOSE TO ROUTE 13 AND ROUTE 1

LESS THAN 5 MILES TO DOWNTOWN DOVER

AVAILABLE NOW FOR \$1,830 PER MONTH, NET * \$12 per sq ft

**ALL INFORMATION SUBMITTED SUBJECT TO ERRORS AND MODIFICATIONS. ALL INFORMATION CONTAINED HEREIN OBTAINED FROM RELIABLE SOURCES BUT NOT GUARANTEED. PROSPECTIVE PURCHASERS SHOULD VERIFY ALL INFORMATION SUBMITTED. LISTING BROKERAGE REPRESENTS SELLER.
PAGE 1 OF 2 PAGES**



For Additional Information Contact:

**CHUCK SPIEGELMAN
ASSOCIATE BROKER**

MCGINNIS COMMERCIAL REAL ESTATE

OFFICE: 302-736-2710

FAX: 302-736-2715

MOBILE: 302-632-0859

EMAIL: cs@mcginnisrealty.com

**ALL INFORMATION SUBMITTED SUBJECT TO ERRORS AND MODIFICATIONS. ALL INFORMATION CONTAINED HEREIN OBTAINED FROM RELIABLE SOURCES BUT NOT GUARANTEED. PROSPECTIVE PURCHASERS SHOULD VERIFY ALL INFORMATION SUBMITTED. LISTING BROKERAGE REPRESENTS SELLER.
PAGE 2 OF 2 PAGES**