



555 East Lookerman St.
Dover, Delaware 19901

McGinnis Commercial Real Estate

Phone: 302.736.2710 Fax: 302.736.2715

www.mcginnisrealty.com

LIBERTO PLAZA LEASE PROPERTY

1502 EAST LEBANON ROAD, DOVER, KENT COUNTY, DELAWARE 19901

OFFICE FILE # 215243

FOR LEASE

WAREHOUSE/RETAIL/OFFICE SUITES AVAILABLE
FROM 1,200 SQ FT OFFICES TO 5,000 SQ FT WAREHOUSE



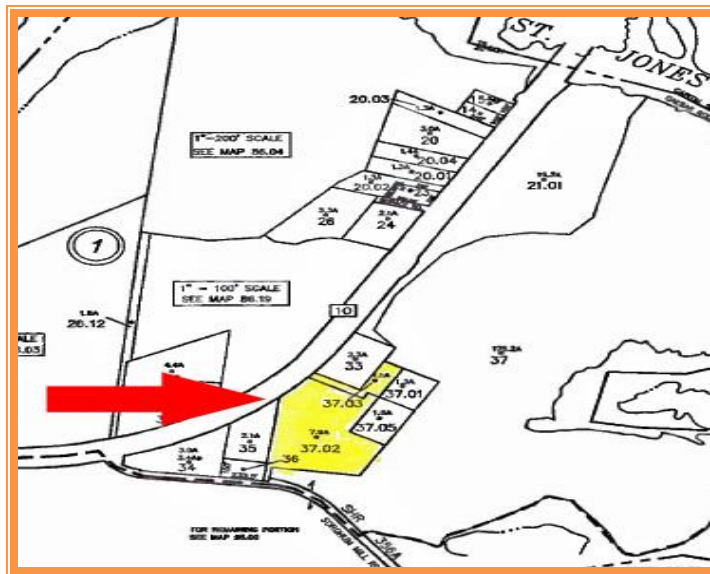
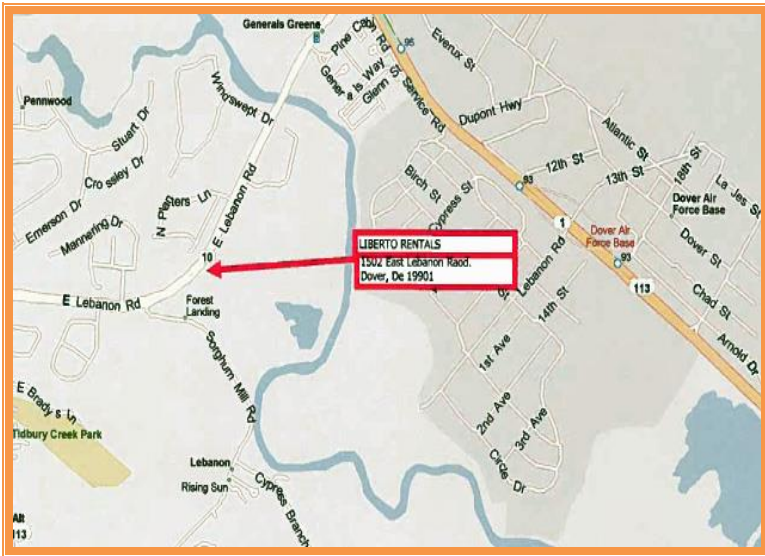
MODERN BLOCK/STEEL CONSTRUCTION * ON SITE MANAGEMENT

LOCATED ON DELAWARE ROUTE 10 ONE MILE FROM DAFB
AND 1 MILE FROM US ROUTE 1 INTERCHANGE

PERFECT FOR CONTRACTOR, PLUMBING/ELECTRIC SUPPLY,
PROFESSIONAL OFFICE, RETAIL

LEASE RATES STARTING AT \$7.50 PER SQ FT

ALL INFORMATION SUBMITTED SUBJECT TO ERRORS AND MODIFICATIONS. ALL INFORMATION
CONTAINED HEREIN OBTAINED FROM RELIABLE SOURCES BUT NOT GUARANTEED. PROSPECTIVE
PURCHASERS SHOULD VERIFY ALL INFORMATION SUBMITTED. LISTING BROKERAGE REPRESENTS SELLER.
PAGE 1 OF 3 PAGES



ALL INFORMATION SUBMITTED SUBJECT TO ERRORS AND MODIFICATIONS. ALL INFORMATION CONTAINED HEREIN OBTAINED FROM RELIABLE SOURCES BUT NOT GUARANTEED. PROSPECTIVE PURCHASERS SHOULD VERIFY ALL INFORMATION SUBMITTED. LISTING BROKERAGE REPRESENTS SELLER. PAGE 2 OF 3 PAGES



VIEW FACING EAST



VIEW FACING WEST



For Additional Information Contact:

MCGINNIS COMMERCIAL REAL ESTATE COMPANY
CHUCK SPIEGELMAN, ASSOCIATE BROKER
555 EAST LOOCKERMAN STREET
DOVER DELAWARE 19901

OFFICE: 302-736-2710
FAX: 302-736-2715
Mobile: 302-632-0859
Email: cs@mcginnisrealty.com

ALL INFORMATION SUBMITTED SUBJECT TO ERRORS AND MODIFICATIONS. ALL INFORMATION CONTAINED HEREIN OBTAINED FROM RELIABLE SOURCES BUT NOT GUARANTEED. PROSPECTIVE PURCHASERS SHOULD VERIFY ALL INFORMATION SUBMITTED. LISTING BROKERAGE REPRESENTS SELLER.
PAGE 3 OF 3 PAGES