

NEW STREET SMYRNA PROPERTY
231 NEW STREET, SMYRNA, KENT COUNTY, DELAWARE 19977

OFFICE FILE# 212165 MLS# 6699003

FOR SALE

1,440 SQUARE FOOT MEDICAL OR PROFESSIONAL OFFICE PROPERTY



SALE PRICE \$ 250,000 * \$ 173.00 +/- PER SQUARE FOOT

COMPLETELY REMODELED IN 2008

STAND ALONE BUILDING WITH ON SITE PARKING

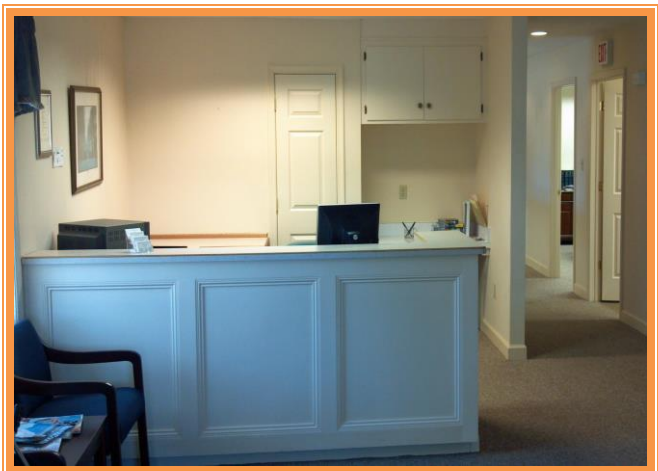
CONVENIENT LOCATION ON BUSY ROUTE 300

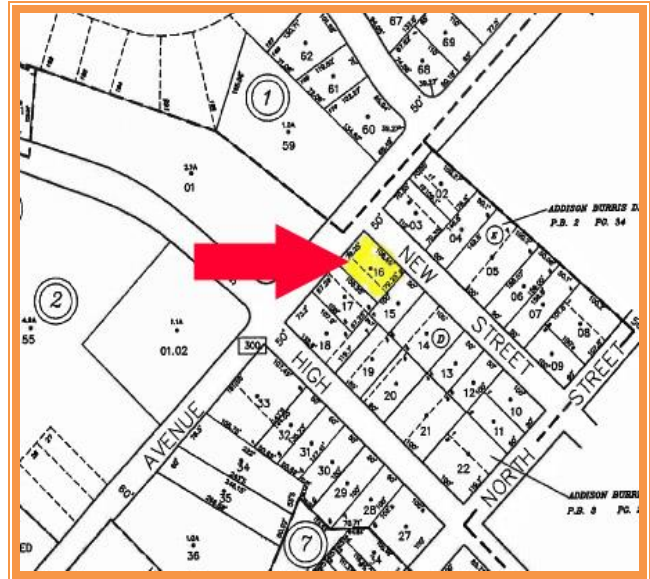
MANY UPGRADES INCLUDING NEW SIDING, WINDOWS AND HVAC

POSSIBLE USES INCLUDE LAW OFFICE, MEDICAL, PROFESSIONAL OFFICE

NEW STREET SMYRNA PROPERTY
231 NEW STREET
SMYRNA, KENT COUNTY, DE
December 17, 2015

Tax Map Identification	DC-17-00920-02-1600
Deed Reference	D2216 182
Zoning	L-C Local Commercial Town of Smyrna
Land Area	8,800 Square feet +/-
Frontage	110.00 ft +/-
Depth	80.00 ft +/-
Bldg Area (sq ft)	1,440
Parking Spaces	8+
City Tax 2014	\$528
County Tax 2014	\$994.57
TOTAL PROPERTY TAX	\$1,522.57





FOR ADDITIONAL INFORMATION CONTACT:

**CHUCK SPIEGELMAN, ASSOCIATE BROKER
MCGINNIS COMMERCIAL REAL ESTATE**

OFFICE: 302-736-2710

FAX: 302-736-2715

MOBILE: 302-632-0859

EMAIL: cs@mcginnisrealty.com

**ALL INFORMATION SUBMITTED SUBJECT TO ERRORS AND MODIFICATIONS. ALL INFORMATION
CONTAINED HEREIN OBTAINED FROM RELIABLE SOURCES BUT NOT GUARANTEED. PROSPECTIVE
PURCHASERS SHOULD VERIFY ALL INFORMATION SUBMITTED. LISTING BROKERAGE REPRESENTS SELLER.
PAGE 3 OF 3 PAGES**