



**555 East Lookerman St.
Dover, Delaware 19901**

Phone: 302.736.2710 Fax: 302.736.2715

www.mcginnisrealty.com

McCain Blackbird Greenspring Road Property
BLACKBIRD GREENSPRING ROAD * SMYRNA, NEW CASTLE COUNTY, DE 19977
OFFICE FILE # 216264 * MLS # 6892097



SALE PRICE \$ 350,000 * \$ 25,135 +/- PER ACRE LAND AREA



ALL INFORMATION SUBMITTED SUBJECT TO ERRORS AND MODIFICATIONS.
ALL INFORMATION CONTAINED HEREIN OBTAINED FROM RELIABLE SOURCES BUT NOT GUARANTEED.
PROSPECTIVE PURCHASERS SHOULD VERIFY ALL INFORMATION SUBMITTED.
LISTING BROKERAGE REPRESENTS SELLER * PAGE 1 OF 4 PAGES

Tax Map Identification 15 - 015.00 - 051

Deed Reference 381 - 107

Zoning SR, SUBURBAN RESERVE, NEW CASTLE COUNTY

Census Tract 169

Flood Hazard Map 10003C0410K; ZONE X; February 4, 2015

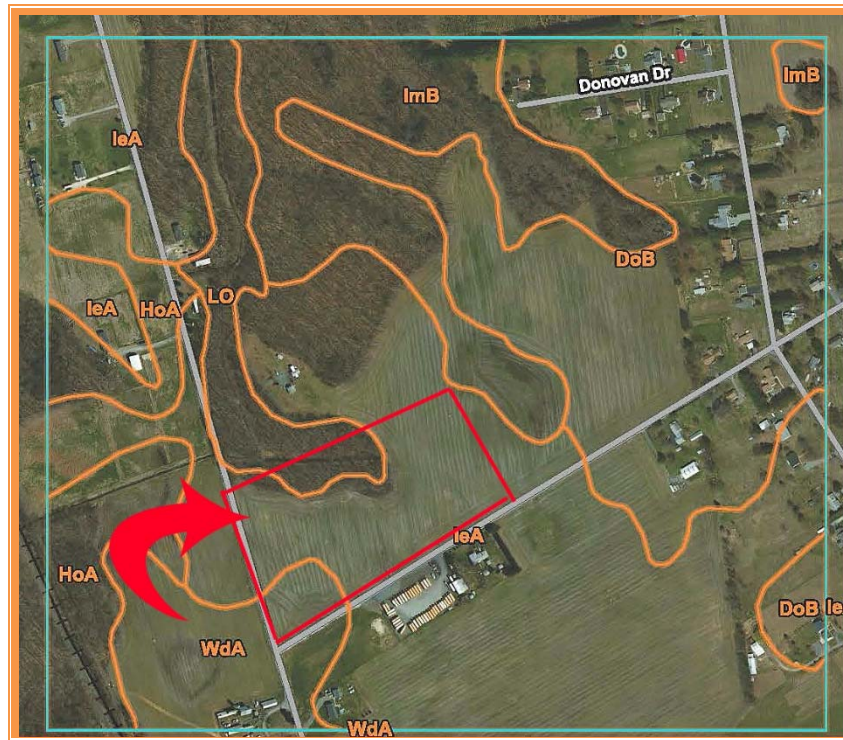
Land Area 563,231 sq ft +/- 12.930 acres +/-

Frontage 706.84 ft +/- Blackbird Greenspring Road
Depth 1,005.08 ft +/- Black Diamond Road

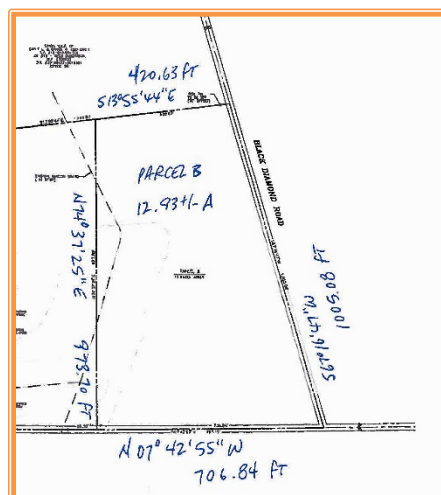
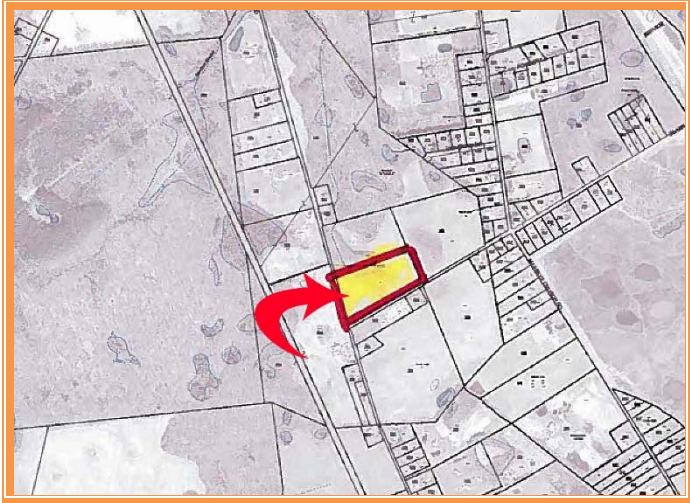
City Tax Assessment	Per Acre	Rate	Tax	Per Acre
\$0	\$0.00	\$0.650	\$0.00	\$0.00

County Tax Assessment	Per Acre	Rate	Tax	Per Acre
\$16,600	\$1,284	\$2.9259	\$485.70	\$38

TOTAL PROPERTY TAX			\$485.70	\$38
---------------------------	--	--	----------	------



ALL INFORMATION SUBMITTED SUBJECT TO ERRORS AND MODIFICATIONS.
ALL INFORMATION CONTAINED HEREIN OBTAINED FROM RELIABLE SOURCES BUT NOT GUARANTEED.
PROSPECTIVE PURCHASERS SHOULD VERIFY ALL INFORMATION SUBMITTED.
LISTING BROKERAGE REPRESENTS SELLER * PAGE 2 OF 4 PAGES



ALL INFORMATION SUBMITTED SUBJECT TO ERRORS AND MODIFICATIONS.
 ALL INFORMATION CONTAINED HEREIN OBTAINED FROM RELIABLE SOURCES BUT NOT GUARANTEED.
 PROSPECTIVE PURCHASERS SHOULD VERIFY ALL INFORMATION SUBMITTED.
 LISTING BROKERAGE REPRESENTS SELLER * PAGE 3 OF 4 PAGES



ALL INFORMATION SUBMITTED SUBJECT TO ERRORS AND MODIFICATIONS.
ALL INFORMATION CONTAINED HEREIN OBTAINED FROM RELIABLE SOURCES BUT NOT GUARANTEED.
PROSPECTIVE PURCHASERS SHOULD VERIFY ALL INFORMATION SUBMITTED.
LISTING BROKERAGE REPRESENTS SELLER * PAGE 4 OF 4 PAGES