



555 East Lookerman St.  
Dover, Delaware 19901

Phone: 302.736.2710 Fax: 302.736.2715

[www.mcginnisrealty.com](http://www.mcginnisrealty.com)

**BONGALOS OFFICE PROPERTY**  
**1025-1027 SOUTH GOVERNORS AVE, DOVER, KENT COUNTY, DE 19904**  
**OFFICE FILE #217271 \* MLS # 6931443**



**SALE PRICE \$ 475,000**  
**\$ 108. +/- PER SQ FT BLDG AREA**



ALL INFORMATION SUBMITTED SUBJECT TO ERRORS AND MODIFICATIONS. ALL INFORMATION  
CONTAINED HEREIN OBTAINED FROM RELIABLE SOURCES BUT NOT GUARANTEED. PROSPECTIVE PURCHASERS  
SHOULD VERIFY ALL INFORMATION SUBMITTED. LISTING BROKERAGE REPRESENTS SELLER.

**Tax Map Identification** ED05 - 077.17 - 07 - 0800-00001

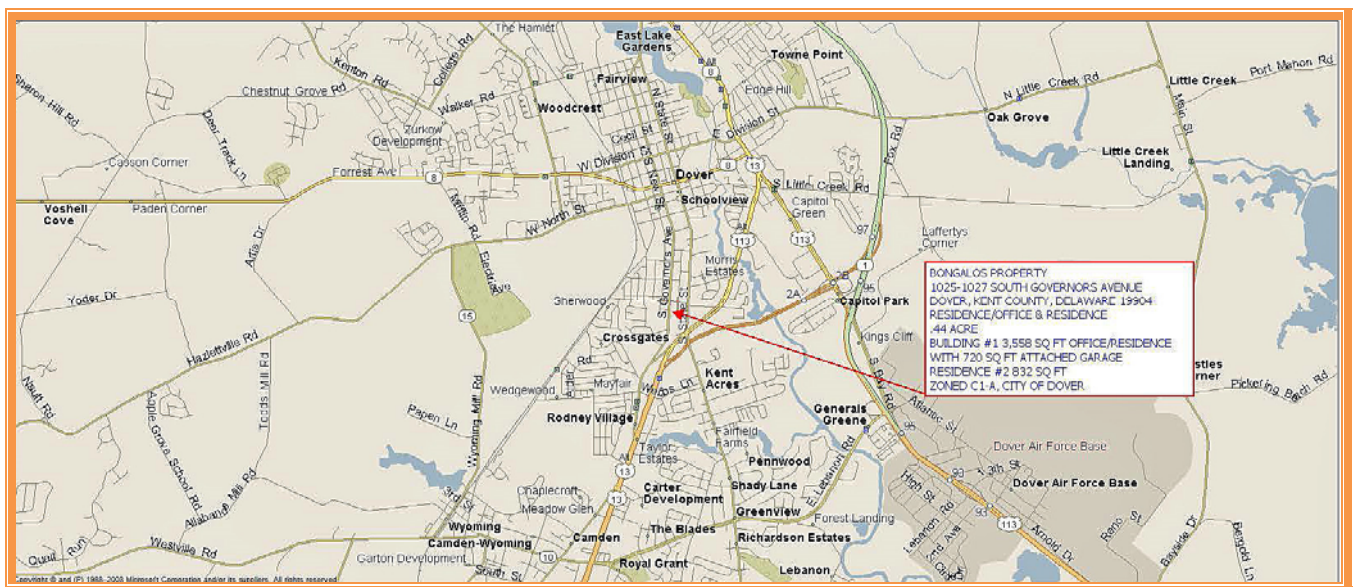
**Deed Reference** M - 38 - 103

**Zoning** C1-A, NEIGHBORHOOD COMMERCIAL, CITY OF DOVER

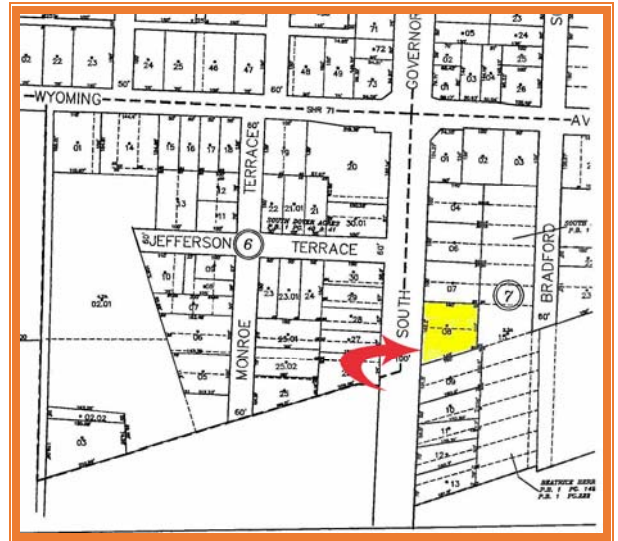
**Census Tract** 413

**Flood Map** 10001C0061H, Zone X, May 5, 2003

<b>Land Area</b>		19,216	sq ft +/-	0.441	acre
<b>Frontage</b>	162.40	ft +/-			
<b>Depth</b>	139.49	ft +/-			
<b>Bldg Area #1 (sq ft)</b>	3,558	sq ft +/-			
<b>Bldg Area #2 (sq ft)</b>	832	sq ft +/-			
<b>TOTAL BLDG AREA</b>	4,390	sq ft +/-			
<b>Coverage Ratio</b>		18.52%			
<b>Parking Spaces</b>		7			
<b>Parking Ratio</b>		0.98	per 500 sf		
<b>City Tax Assessment</b>					
\$480,200	<b>Per Sq Ft</b>	<b>Rate</b>	<b>Tax</b>	<b>Per Sq Ft</b>	
	\$134.96	\$0.405	\$1,944.81	\$0.55	
<b>County Tax Assessment</b>					
\$171,800	<b>Per Sq Ft</b>	<b>Rate</b>	<b>Tax</b>	<b>Per Sq Ft</b>	
	\$48.29	\$2.2549	\$3,873.92	\$1.09	
<b>TOTAL PROPERTY TAX</b>			\$5,818.73	\$1.64	



ALL INFORMATION SUBMITTED SUBJECT TO ERRORS AND MODIFICATIONS. ALL INFORMATION  
CONTAINED HEREIN OBTAINED FROM RELIABLE SOURCES BUT NOT QUARANTEED. PROSPECTIVE PURCHASERS  
SHOULD VERIFY ALL INFORMATION SUBMITTED. LISTING BROKERAGE REPRESENTS SELLER.



ALL INFORMATION SUBMITTED SUBJECT TO ERRORS AND MODIFICATIONS. ALL INFORMATION CONTAINED HEREIN OBTAINED FROM RELIABLE SOURCES BUT NOT GUARANTEED. PROSPECTIVE PURCHASERS SHOULD VERIFY ALL INFORMATION SUBMITTED. LISTING BROKERAGE REPRESENTS SELLER.





ALL INFORMATION SUBMITTED SUBJECT TO ERRORS AND MODIFICATIONS. ALL INFORMATION CONTAINED HEREIN OBTAINED FROM RELIABLE SOURCES BUT NOT GUARANTEED. PROSPECTIVE PURCHASERS SHOULD VERIFY ALL INFORMATION SUBMITTED. LISTING BROKERAGE REPRESENTS SELLER.