



**555 East Lookerman St.
Dover, Delaware 19901**

McGinnis Commercial Real Estate

Phone: 302.736.2710 Fax: 302.736.2715

www.mcginnisrealty.com

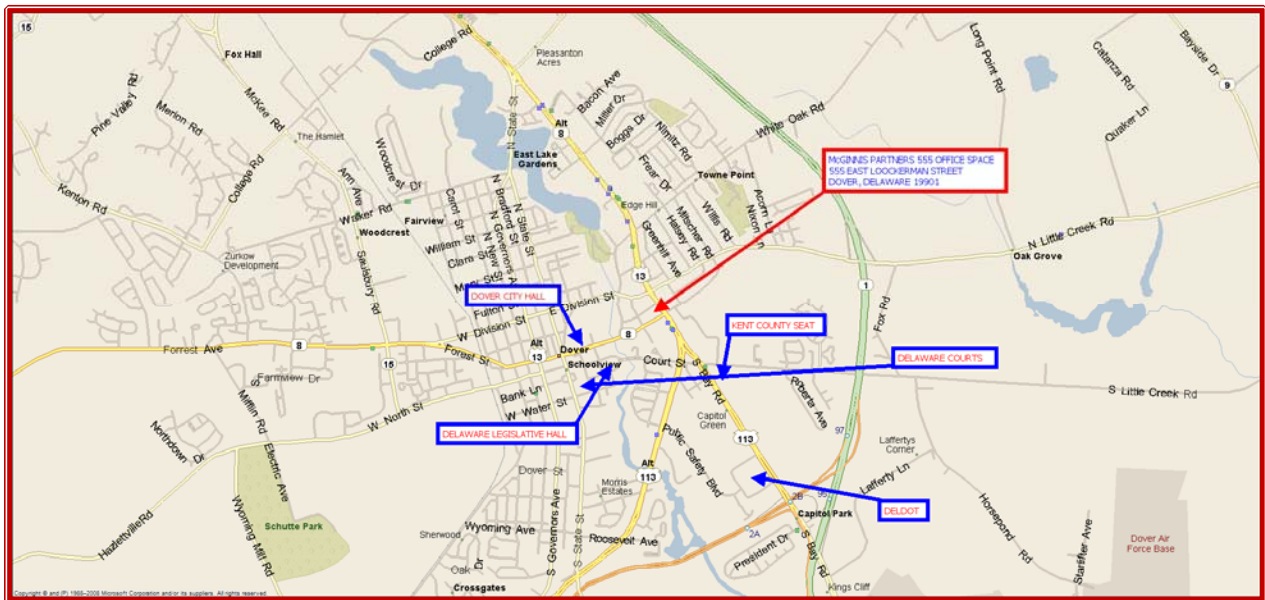
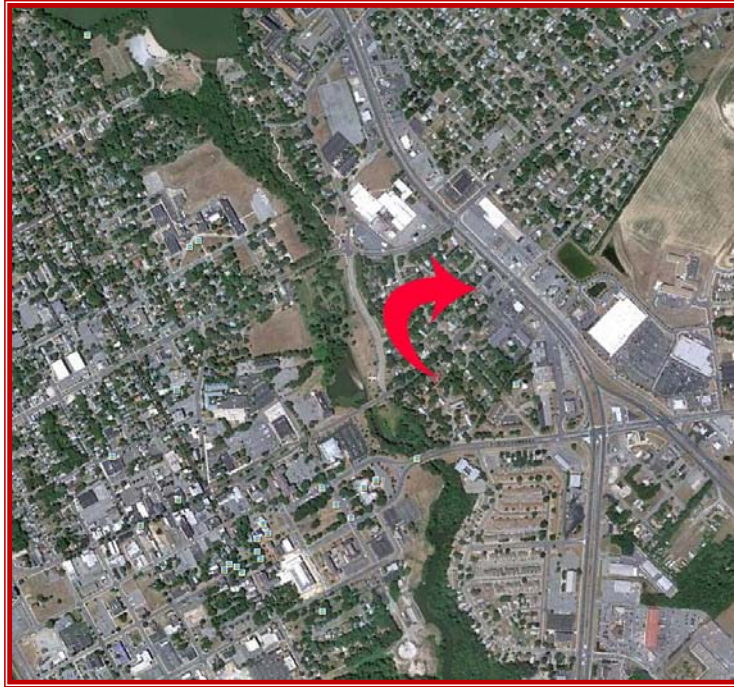
555 BUILDING OFFICE LEASE SUITE #100
555 East Lookerman Street * Dover, Kent County, Delaware 19901
OFFICE FILE # 201118 * MLS # N/A

\$ 18.00 PER SQUARE FOOT GROSS LEASE

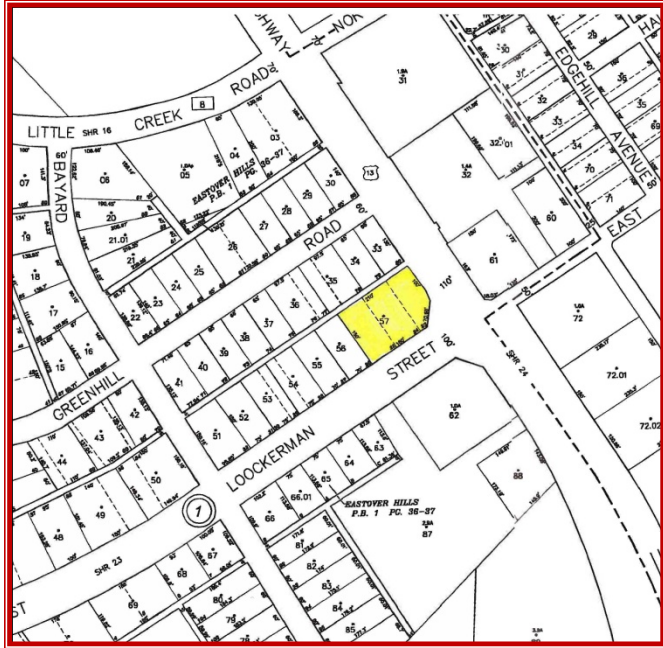


1st FLOOR							
	USABLE	FLOOR	BLDG	RENTABLE	ANNUAL RATE	ANNUAL RENT	MONTHLY RENT
SUITE 120, USABLE	492	10.99%	3.66%				
SUITE 120 RENTABLE	580	12.95%	4.32%	580	\$18.00	\$10,800	\$900
common area	88	1.97%	4.32%				
floor total	4,478	100.0%	33.33%				
total bldg	13,434		100.00%				

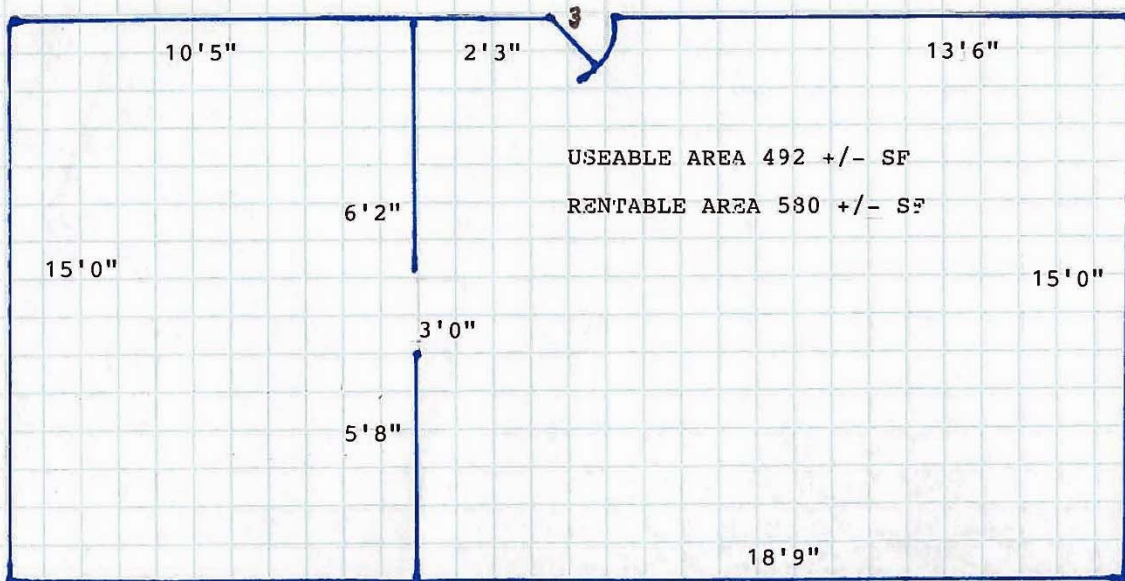
ALL INFORMATION SUBMITTED SUBJECT TO ERRORS AND MODIFICATIONS.
ALL INFORMATION CONTAINED HEREIN OBTAINED FROM RELIABLE SOURCES BUT NOT GUARANTEED.
PROSPECTIVE PURCHASERS SHOULD VERIFY ALL INFORMATION SUBMITTED.
LISTING BROKERAGE REPRESENTS SELLER * PAGE 1 OF 5 PAGES



ALL INFORMATION SUBMITTED SUBJECT TO ERRORS AND MODIFICATIONS.
 ALL INFORMATION CONTAINED HEREIN OBTAINED FROM RELIABLE SOURCES BUT NOT GUARANTEED.
 PROSPECTIVE PURCHASERS SHOULD VERIFY ALL INFORMATION SUBMITTED.
 LISTING BROKERAGE REPRESENTS SELLER * PAGE 2 OF 5 PAGES



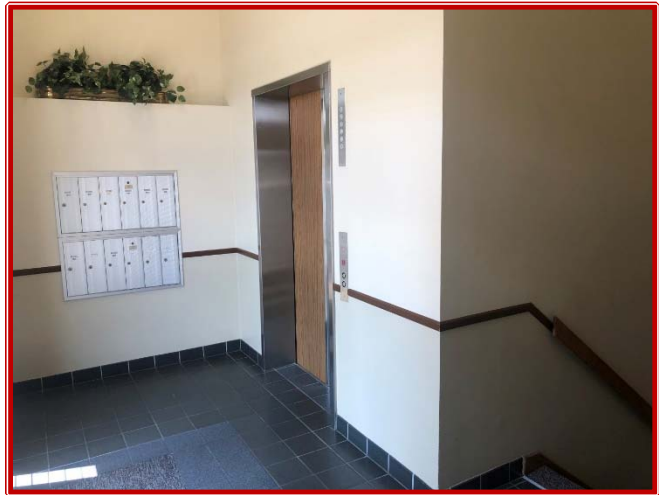
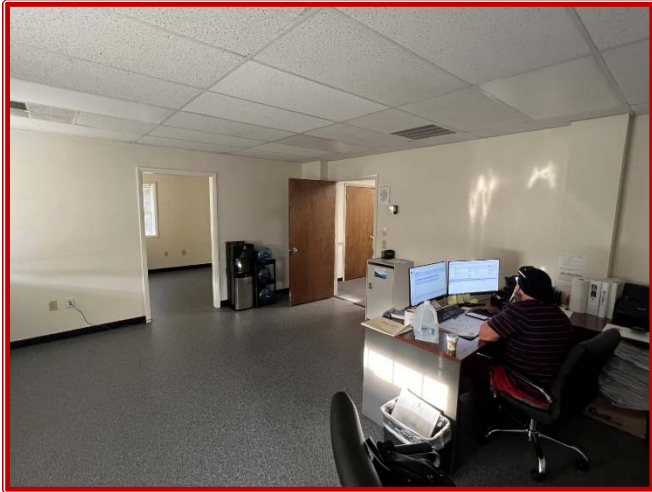
SUITE #120
 INSIDE DIMENSIONS
 NOT TO SCALE



ALL INFORMATION SUBMITTED SUBJECT TO ERRORS AND MODIFICATIONS.
 ALL INFORMATION CONTAINED HEREIN OBTAINED FROM RELIABLE SOURCES BUT NOT GUARANTEED.
 PROSPECTIVE PURCHASERS SHOULD VERIFY ALL INFORMATION SUBMITTED.
 LISTING BROKERAGE REPRESENTS SELLER * PAGE 3 OF 5 PAGES



**ALL INFORMATION SUBMITTED SUBJECT TO ERRORS AND MODIFICATIONS.
ALL INFORMATION CONTAINED HEREIN OBTAINED FROM RELIABLE SOURCES BUT NOT GUARANTEED.
PROSPECTIVE PURCHASERS SHOULD VERIFY ALL INFORMATION SUBMITTED.
LISTING BROKERAGE REPRESENTS SELLER * PAGE 4 OF 5 PAGES**



**ALL INFORMATION SUBMITTED SUBJECT TO ERRORS AND MODIFICATIONS.
ALL INFORMATION CONTAINED HEREIN OBTAINED FROM RELIABLE SOURCES BUT NOT GUARANTEED.
PROSPECTIVE PURCHASERS SHOULD VERIFY ALL INFORMATION SUBMITTED.
LISTING BROKERAGE REPRESENTS SELLER * PAGE 5 OF 5 PAGES**