



555 East Lookerman St.
Dover, Delaware 19901

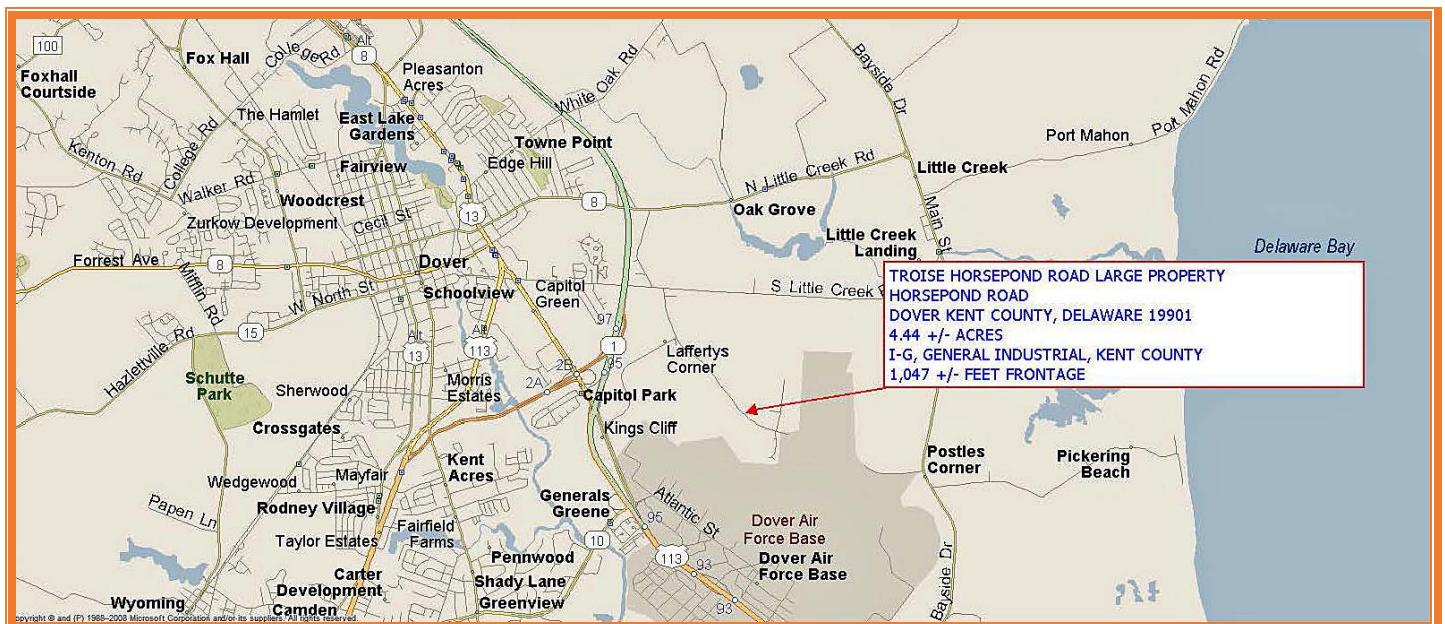
Phone: 302.736.2710 Fax: 302.736.2715

www.mcginisrealty.com

TROISE HORSEPOND ROAD SMALL PROPERTY
HORSEPOND ROAD, DOVER, KENT COUNTY, DELAWARE 19901
OFFICE FILE # : 217276 * MLS # : 1001664996



SALE PRICE \$ 20,000



ALL INFORMATION SUBMITTED SUBJECT TO ERRORS AND MODIFICATIONS. ALL INFORMATION
 CONTAINED HEREIN OBTAINED FROM RELIABLE SOURCES BUT NOT GUARANTEED. PROSPECTIVE PURCHASERS
 SHOULD VERIFY ALL INFORMATION SUBMITTED. LISTING BROKERAGE REPRESENTS SELLER.
 PAGE 1 OF 4 PAGES

Tax Map Identification ED00 - 087.00 - 01 - 01.00

Deed Reference D3579 - 129

Zoning I - G, GENERAL INDUSTRIAL, KENT COUNTY

Census Tract 411

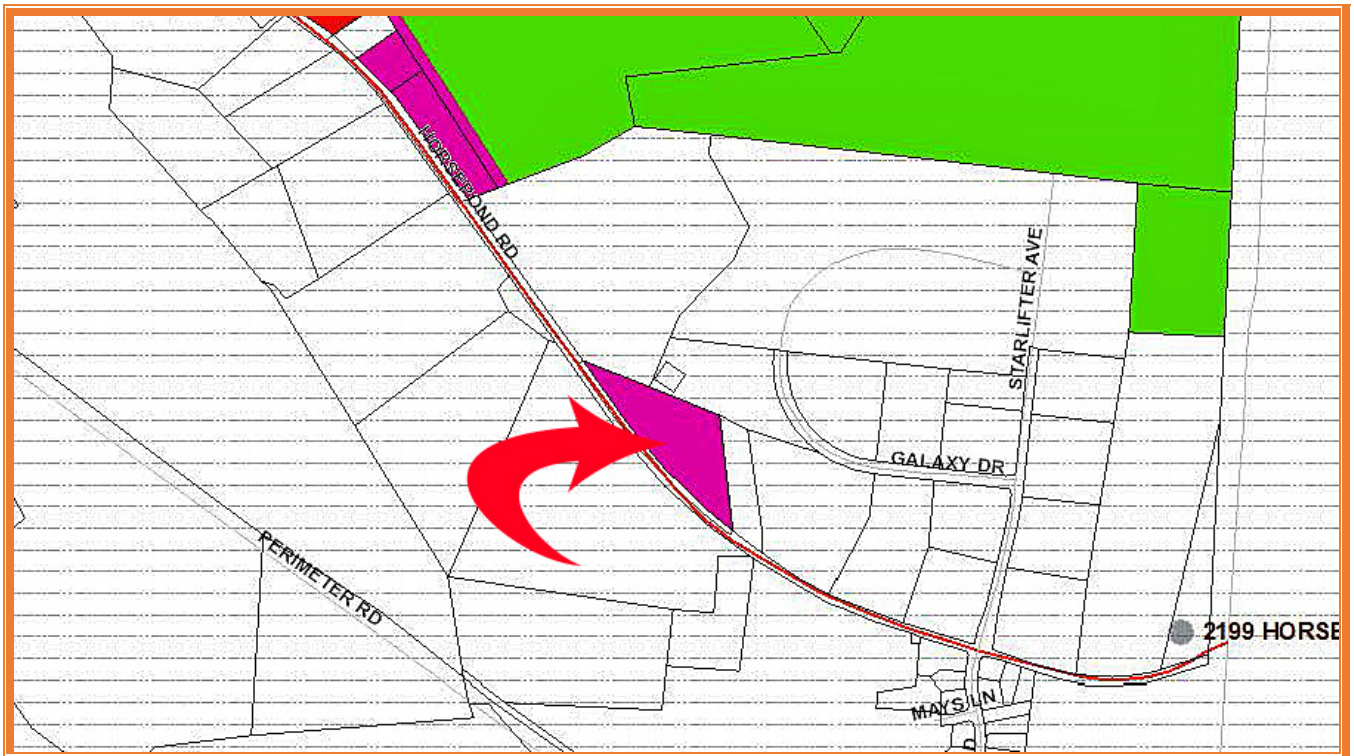
Flood Hazard Map 10001C0188J; Zone X; July 7, 2014

Land Area		193,314	sq ft +/-	4.438	acres +/-
Frontage	1,074.47	ft +/-			
Depth	682.20	ft +/-			

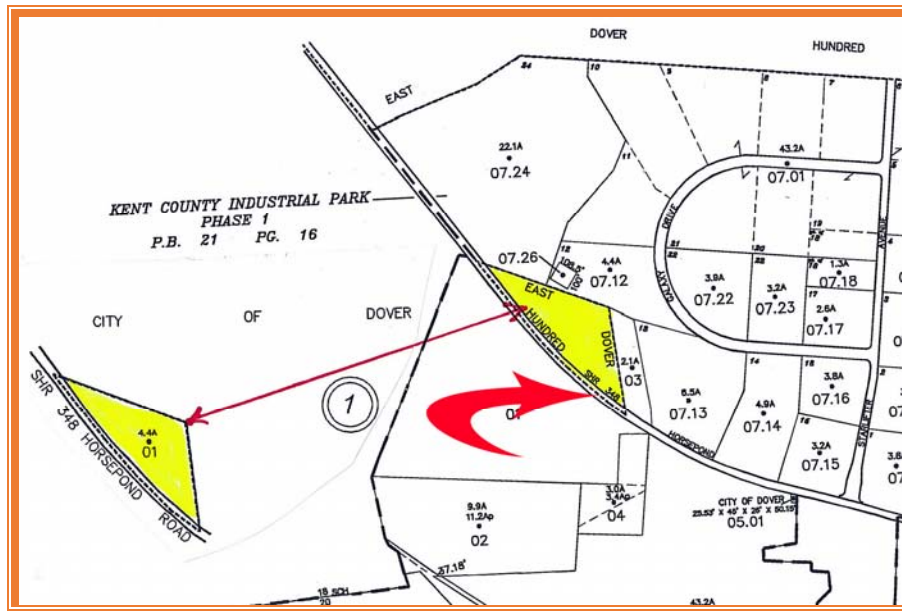
City Tax Assessment	Per Sq Ft	Rate	Tax	Per Sq Ft
\$0	\$0.00	\$0.405	\$0.00	\$0.00

County Tax Assessment	Per Sq Ft	Rate	Tax	Per Sq Ft
\$3,000	\$0.02	\$2.2549	\$67.65	\$0.00035

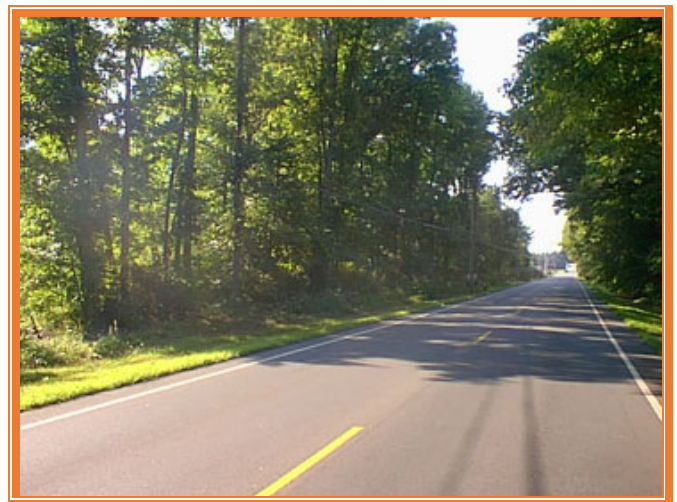
TOTAL PROPERTY TAX			\$67.65	\$0.00035	TOTAL PROPERTY TAX
---------------------------	--	--	---------	-----------	---------------------------



ALL INFORMATION SUBMITTED SUBJECT TO ERRORS AND MODIFICATIONS. ALL INFORMATION CONTAINED HEREIN OBTAINED FROM RELIABLE SOURCES BUT NOT GUARANTEED. PROSPECTIVE PURCHASERS SHOULD VERIFY ALL INFORMATION SUBMITTED. LISTING BROKERAGE REPRESENTS SELLER.
PAGE 2 OF 4 PAGES



ALL INFORMATION SUBMITTED SUBJECT TO ERRORS AND MODIFICATIONS. ALL INFORMATION
CONTAINED HEREIN OBTAINED FROM RELIABLE SOURCES BUT NOT GUARANTEED. PROSPECTIVE PURCHASERS
SHOULD VERIFY ALL INFORMATION SUBMITTED. LISTING BROKERAGE REPRESENTS SELLER.
PAGE 3 OF 4 PAGES



ALL INFORMATION SUBMITTED SUBJECT TO ERRORS AND MODIFICATIONS. ALL INFORMATION
CONTAINED HEREIN OBTAINED FROM RELIABLE SOURCES BUT NOT GUARANTEED. PROSPECTIVE PURCHASERS
SHOULD VERIFY ALL INFORMATION SUBMITTED. LISTING BROKERAGE REPRESENTS SELLER.
PAGE 4 OF 4 PAGES