



555 East Lookerman St.  
Dover, Delaware 19901

McGinnis Commercial Real Estate

Phone: 302.736.2710 Fax: 302.736.2715

www.mcginnisrealty.com

CARTANZA HAWKEY FARM PROPERTY  
HAWKEY BRANCH ROAD SMYRNA, KENT COUNTY, DELAWARE 19977

OFFICE FILE# 217280 MLS# 7011420

**FOR SALE**

81+/- ACRE FARM NEAR SMYRNA, KENT COUNTY, DELAWARE



**SALE PRICE \$ 598,000 \* \$ 7,383 +/- PER ACRE**

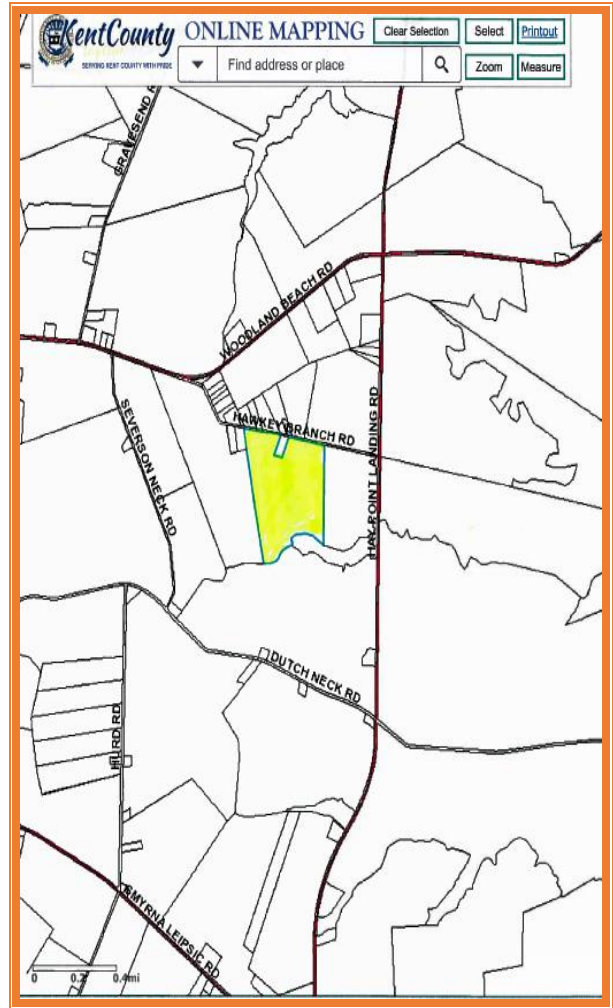
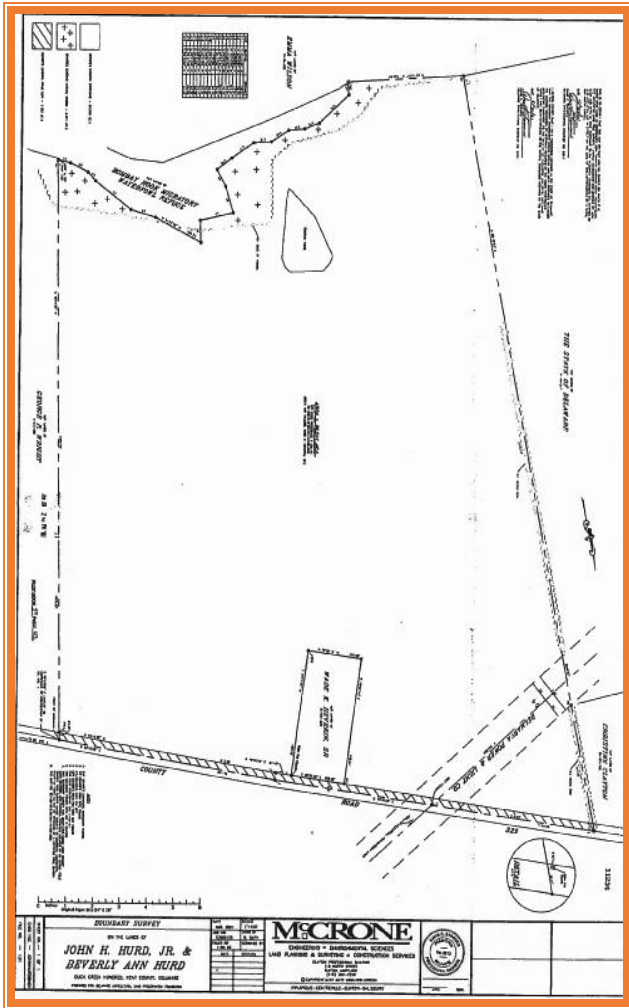
CROP FARM / HUNTING FARM IN AGLAND PRESERVATION

ADJACENT TO BOMBAY HOOK WATERFOWL REFUGE

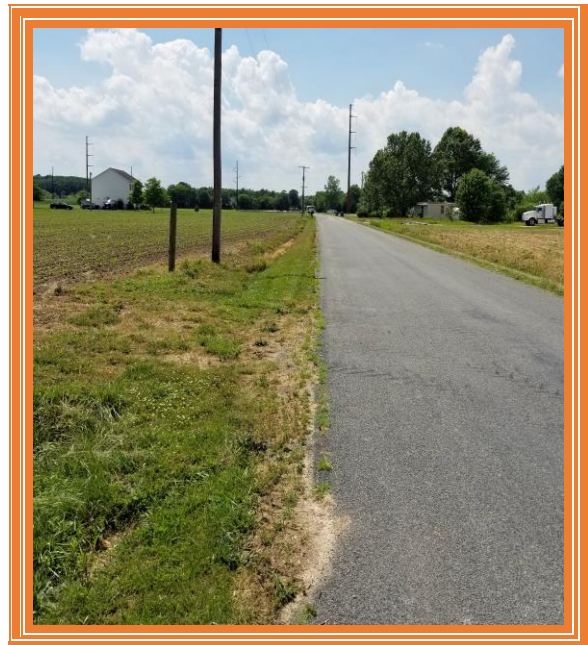
¾ ACRE POND ON SITE

LOCATED CLOSE TO DELAWARE RT 6 AND RT 9 EAST OF SMYRNA

ALL INFORMATION SUBMITTED SUBJECT TO ERRORS AND MODIFICATIONS. ALL INFORMATION CONTAINED HEREIN OBTAINED FROM RELIABLE SOURCES BUT NOT GUARANTEED. PROSPECTIVE PURCHASERS SHOULD VERIFY ALL INFORMATION SUBMITTED. LISTING BROKERAGE REPRESENTS SELLER.  
PAGE 1 OF 3 PAGES



View looking East

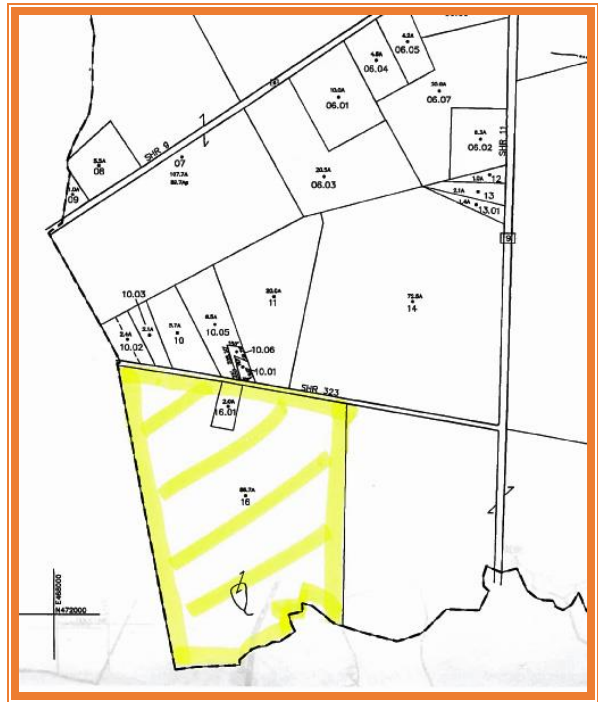


View looking West

**ALL INFORMATION SUBMITTED SUBJECT TO ERRORS AND MODIFICATIONS. ALL INFORMATION CONTAINED HEREIN OBTAINED FROM RELIABLE SOURCES BUT NOT GUARANTEED. PROSPECTIVE PURCHASERS SHOULD VERIFY ALL INFORMATION SUBMITTED. LISTING BROKERAGE REPRESENTS SELLER. PAGE 2 OF 3 PAGES**



View looking South



Tax map

<b>Tax Map Identification</b>	1-00-01200-01-1600
<b>Deed Reference</b>	D5285 228 F029 57
<b>Zoning</b>	PDR - FARMLAND PRESERVATION Kent County, DE
<b>Total Land Area</b>	81 +/- Acres
<b>Tillable land</b>	77 +/- Acres
<b>Marsh Land</b>	3 +/- Acres
<b>Property Class</b>	Farmland
<b>Census Tract</b>	432
<b>School District</b>	Smyrna
<b>TOTAL PROPERTY TAX</b>	None.

FOR ADDITIONAL INFORMATION CONTACT:

**CHUCK SPIEGELMAN, ASSOCIATE BROKER**  
**MCGINNIS COMMERCIAL REAL ESTATE**  
**OFFICE: 302-736-2710**  
**FAX: 302-736-2715**  
**MOBILE: 302-632-0859**  
**EMAIL: [cs@mcginnisrealty.com](mailto:cs@mcginnisrealty.com)**

**ALL INFORMATION SUBMITTED SUBJECT TO ERRORS AND MODIFICATIONS. ALL INFORMATION CONTAINED HEREIN OBTAINED FROM RELIABLE SOURCES BUT NOT GUARANTEED. PROSPECTIVE PURCHASERS SHOULD VERIFY ALL INFORMATION SUBMITTED. LISTING BROKERAGE REPRESENTS SELLER. PAGE 3 OF 3 PAGES**