



555 East Lookerman St.
Dover, Delaware 19901

Phone: 302.736.2710 Fax: 302.736.2715

www.mcginnisrealty.com

VADU OFFICE PROPERTY
24 HIAWATHA LANE, DOVER, KENT COUNTY, DELAWARE 19904
FILE #217291 * MLS # 7096927



\$650,000 * \$188 +/- PER SQUARE FOOT BLDG AREA

Tax Map Identification ED05 - 067.12 - 01 - 04.04 - 00001

Deed Reference D377 - 098

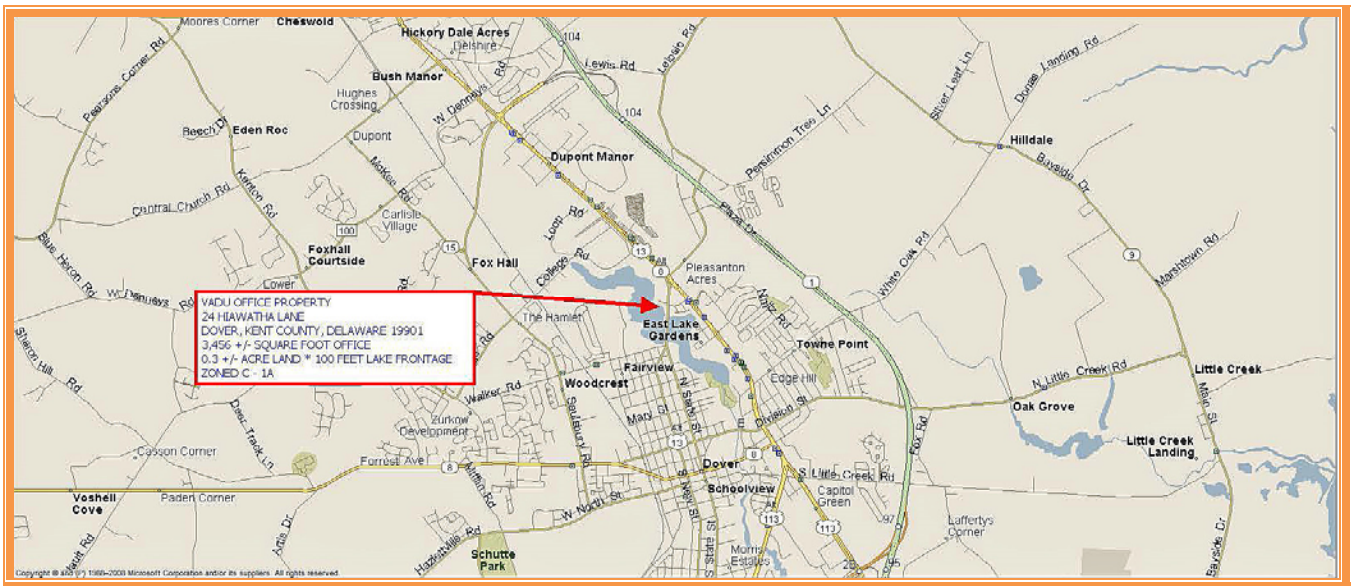
Zoning C-1A, LIMITED COMMERCIAL, CITY OF DOVER

Census Tract 433

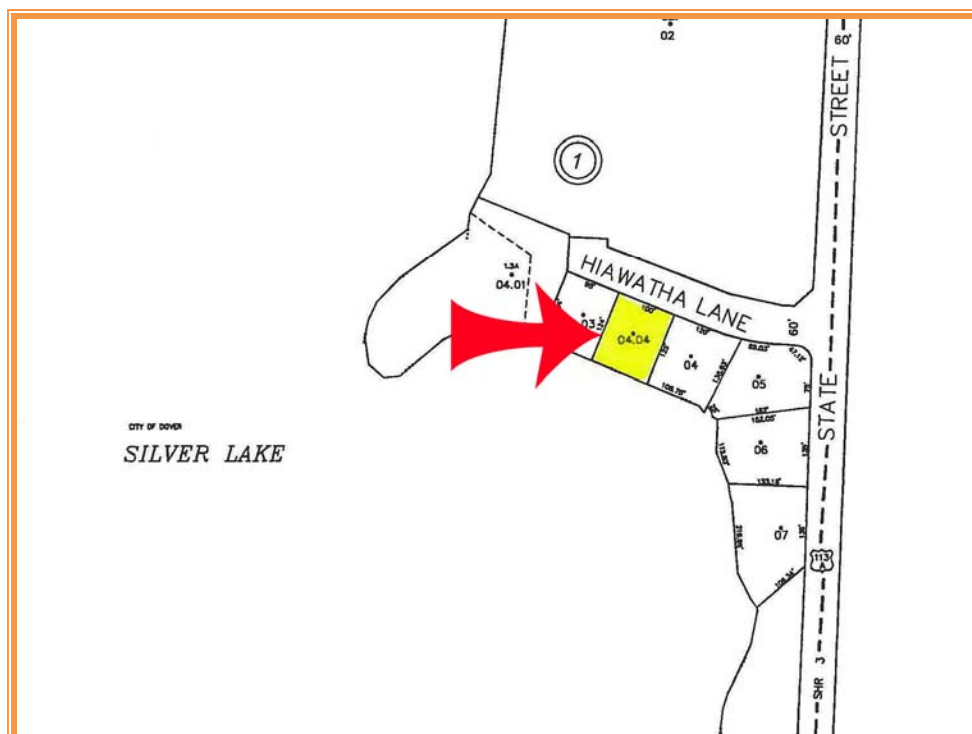
Flood Hazard Map 10001C0167H; ZONE X; May 5, 2003

Land Area		12,500	sq ft +/-	0.287	acres
Frontage	100.00	ft +/-			
Depth	125.00	ft +/-			
Building Area, TOTAL		3,456	sq ft +/-		
Width	14	ft +/-			
Depth	10	ft +/-			
BUILDING 1		2,720	sq ft +/-		
Width	40	ft +/-			
Depth	34	ft +/-			
BUILDING 2		736	sq ft +/-		
COVERAGE RATIO		27.65%			
PARKING SPACES		7			
PARKING RATIO		0.61	PER 300 SF BLDG AREA		
City Tax Assessment		Per SF Bldg	Rate	Tax	Per SF Bldg
\$395,100		\$114.32	\$0.405	\$1,600.16	\$0.46
County Tax Assessment		Per SF Bldg	Rate	Tax	Per SF Bldg
\$79,700		\$23.06	\$2.2464	\$1,790.38	\$0.52
TOTAL PROPERTY TAX				\$3,390.54	\$0.98

ALL INFORMATION SUBMITTED SUBJECT TO ERRORS AND MODIFICATIONS. ALL INFORMATION CONTAINED HEREIN OBTAINED FROM RELIABLE SOURCES BUT NOT GUARANTEED. PROSPECTIVE PURCHASERS SHOULD VERIFY ALL INFORMATION SUBMITTED. LISTING BROKERAGE REPRESENTS SELLER.
PAGE 1 OF 4 PAGES



ALL INFORMATION SUBMITTED SUBJECT TO ERRORS AND MODIFICATIONS. ALL INFORMATION CONTAINED HEREIN OBTAINED FROM RELIABLE SOURCES BUT NOT GUARANTEED. PROSPECTIVE PURCHASERS SHOULD VERIFY ALL INFORMATION SUBMITTED. LISTING BROKERAGE REPRESENTS SELLER.
PAGE 2 OF 4 PAGES



ALL INFORMATION SUBMITTED SUBJECT TO ERRORS AND MODIFICATIONS. ALL INFORMATION CONTAINED HEREIN OBTAINED FROM RELIABLE SOURCES BUT NOT GUARANTEED. PROSPECTIVE PURCHASERS SHOULD VERIFY ALL INFORMATION SUBMITTED. LISTING BROKERAGE REPRESENTS SELLER.
PAGE 3 OF 4 PAGES



ALL INFORMATION SUBMITTED SUBJECT TO ERRORS AND MODIFICATIONS. ALL INFORMATION
CONTAINED HEREIN OBTAINED FROM RELIABLE SOURCES BUT NOT GUARANTEED. PROSPECTIVE PURCHASERS
SHOULD VERIFY ALL INFORMATION SUBMITTED. LISTING BROKERAGE REPRESENTS SELLER.
PAGE 4 OF 4 PAGES