

**LIGHTHOUSE PAD SITES**  
**2 CALVARY ROAD, MILFORD, KENT COUNTY, DELAWARE, 19963**

**OFFICE FILE# 218300    MLS# 7271351**

## **PAD SITES FOR SALE**

**7 ACRE PAD SITE AVAILABLE**



**SALE PRICE \$ 200,000 PER ACRE**

**2 PARCELS AVAILABLE \* 5.1 +/- AND 7.3 +/- ACRES**

**PARCELS CAN BE DIVIDED**

**ZONED COMMERCIAL IN THE TOWN OF MILFORD**

**JOIN LIGHTHOUSE ESTATES AND HAMPTON INN**

**INFRASTRUCTURE AND ENTRANCES IN PLACE**

**ALL INFORMATION SUBMITTED SUBJECT TO ERRORS AND MODIFICATIONS. ALL INFORMATION  
CONTAINED HEREIN OBTAINED FROM RELIABLE SOURCES BUT NOT GUARANTEED. PROSPECTIVE  
PURCHASERS SHOULD VERIFY ALL INFORMATION SUBMITTED. LISTING BROKERAGE REPRESENTS SELLER.  
PAGE 1 OF 3 PAGES**

# OFFICE

- DISTANCE TO OCEAN CITY MARYLAND = 49 MILES

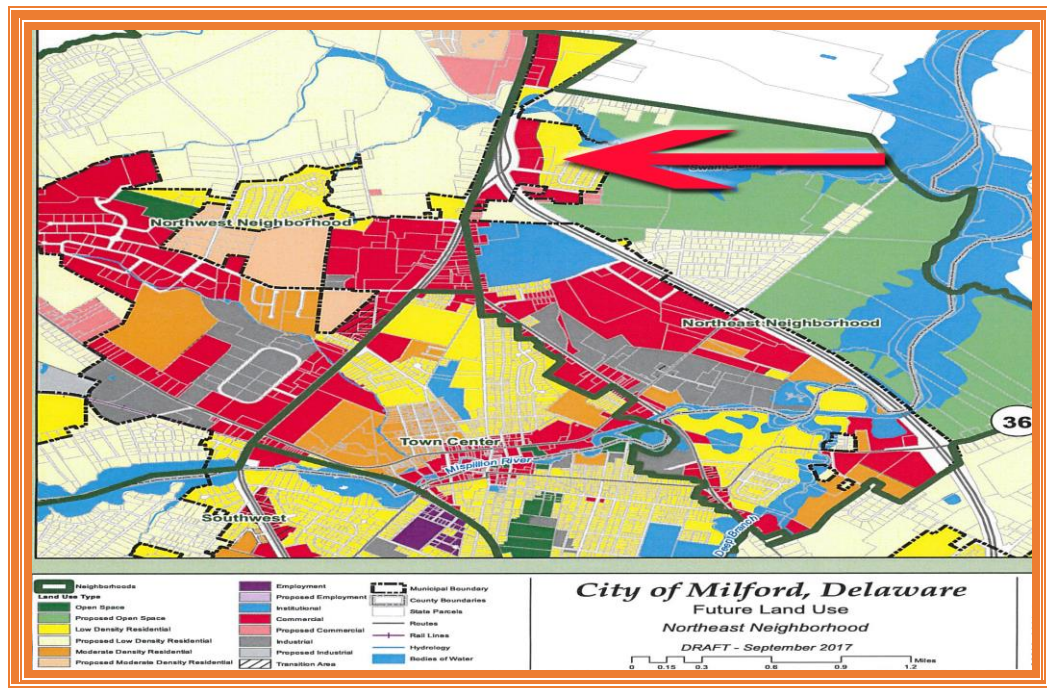


TAX MAP



## MARKET MAP

**ALL INFORMATION SUBMITTED SUBJECT TO ERRORS AND MODIFICATIONS. ALL INFORMATION  
CONTAINED HEREIN OBTAINED FROM RELIABLE SOURCES BUT NOT GUARANTEED. PROSPECTIVE  
PURCHASERS SHOULD VERIFY ALL INFORMATION SUBMITTED. LISTING BROKERAGE REPRESENTS SELLER.  
PAGE 2 OF 3 PAGES**



**ZONING MAP**

**Tax Map Identification**

MD 16 174.00-03-01.01  
MD 16 174.00-03-01.02

**Deed Reference**

D 345 137

**Zoning**

HIGHWAY  
COMMERCIAL  
Town of Milford

**Total Land Area**

12.4 +/- Acres

**Pad Site 1 land Area**

5.1482 +/- Acres

**Pad Site 2 Land Area**

7.252 +/- Acres

**School District**

Milford

**Utilities**

Available at location

**FOR ADDITIONAL INFORMATION CONTACT:**

**CHUCK SPIEGELMAN, ASSOCIATE BROKER**  
**MCGINNIS COMMERCIAL REAL ESTATE**  
**OFFICE: 302-736-2710**  
**FAX: 302-736-2715**  
**MOBILE: 302-632-0859**  
**EMAIL: [cs@mcginnisrealty.com](mailto:cs@mcginnisrealty.com)**

**ALL INFORMATION SUBMITTED SUBJECT TO ERRORS AND MODIFICATIONS. ALL INFORMATION CONTAINED HEREIN OBTAINED FROM RELIABLE SOURCES BUT NOT GUARANTEED. PROSPECTIVE PURCHASERS SHOULD VERIFY ALL INFORMATION SUBMITTED. LISTING BROKERAGE REPRESENTS SELLER.**  
**PAGE 3 OF 3 PAGES**