



555 East Lookerman St.  
Dover, Delaware 19901

McGinnis Commercial Real Estate

Phone: 302.736.2710 Fax: 302.736.2715

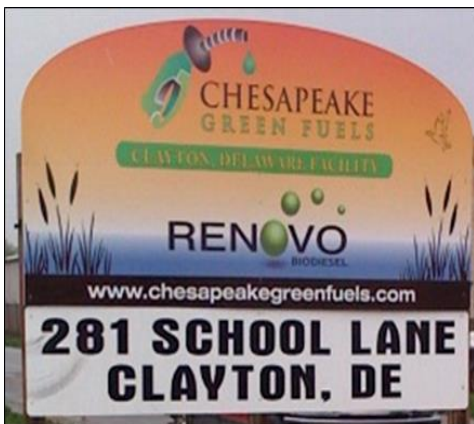
www.mcginnisrealty.com

**CLAYTON BIO-DIESEL Property**  
**281 SCHOOL LANE, CLAYTON, KENT COUNTY, DELAWARE 19938**

OFFICE FILE# 215222

**FOR SALE**

**BIODIESEL REFINERY / CHEMICAL PROCESSING PLANT**



**ALL INFORMATION SUBMITTED SUBJECT TO ERRORS AND MODIFICATIONS. ALL INFORMATION CONTAINED HEREIN OBTAINED FROM RELIABLE SOURCES BUT NOT GUARANTEED. PROSPECTIVE PURCHASERS SHOULD VERIFY ALL INFORMATION SUBMITTED. LISTING BROKERAGE REPRESENTS SELLER.**  
**PAGE 1 OF 3 PAGES**

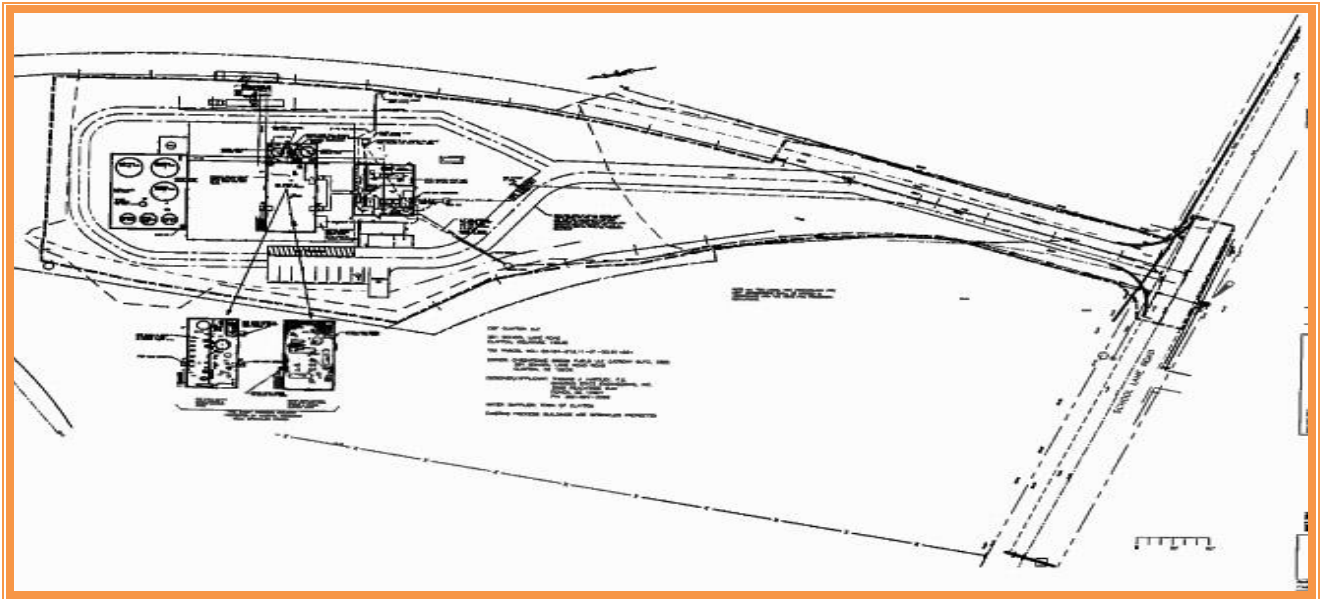
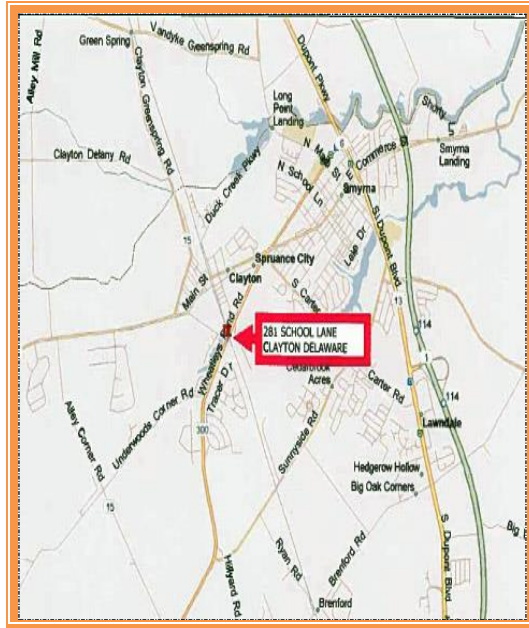
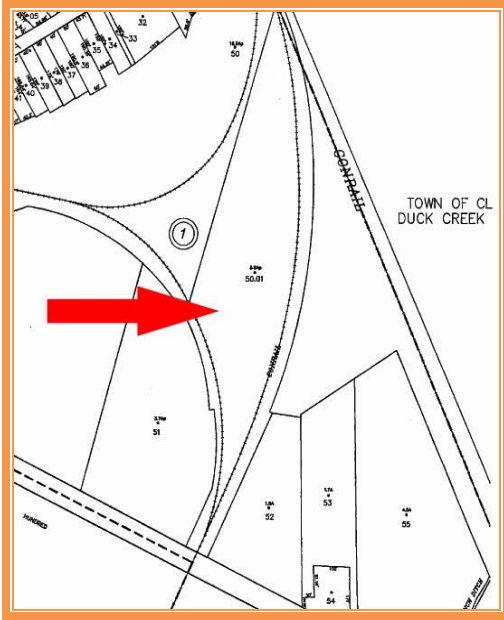
**SALE PRICE \$ 1,500,000**

CONSTRUCTED IN 2006 AND RETROFITTED IN 2010 AS CLASS "A"  
USES INCLUDE BIODIESEL OR NUMEROUS CHEMICAL PROCESSING OPERATIONS  
RAIL SIDING, FULLY SPRINKLERED, 800 AMP ELECTRIC SERVICE  
LABORATORY, BOILER, THERMAL OIL HEATER, COOLING TOWER AND CHILLER  
INCLUDED  
EXPLOSION PROOF FULLY AUTOMATED PROCESS AREA, 20 PROCESSING VESSELS  
OVER 250,000 GALLONS OF TANK STORAGE  
FULLY LICENSED AND PERMITTED UNDER RFS-2 LAW  
IDEAL LOCATION FOR DISTRIBUTION

**CLAYTON BIODIESEL PROPERTY  
281 SCHOOL LANE  
CLAYTON, KENT COUNTY, DE 19938  
November 1, 2016**

**Tax Map Identification** KH-04-018.11-01-5001  
**Deed Reference** D5401 182  
**Land Lease Term** Options to November 2029  
**Land Lease Rate** \$10,773 per quarter year

**ALL INFORMATION SUBMITTED SUBJECT TO ERRORS AND MODIFICATIONS. ALL INFORMATION  
CONTAINED HEREIN OBTAINED FROM RELIABLE SOURCES BUT NOT GUARANTEED. PROSPECTIVE  
PURCHASERS SHOULD VERIFY ALL INFORMATION SUBMITTED. LISTING BROKERAGE REPRESENTS SELLER.  
PAGE 2 OF 3 PAGES**



FOR ADDITIONAL INFORMATION CONTACT

**CHUCK SPIEGELMAN, ASSOCIATE BROKER  
MCGINNIS COMMERCIAL REAL ESTATE**

**OFFICE: 302-736-2710**

**FAX: 302-736-2715**

**MOBILE: 302-632-0859**

**EMAIL: [cs@mcginnisrealty.com](mailto:cs@mcginnisrealty.com)**

**ALL INFORMATION SUBMITTED SUBJECT TO ERRORS AND MODIFICATIONS. ALL INFORMATION  
CONTAINED HEREIN OBTAINED FROM RELIABLE SOURCES BUT NOT GUARANTEED. PROSPECTIVE  
PURCHASERS SHOULD VERIFY ALL INFORMATION SUBMITTED. LISTING BROKERAGE REPRESENTS SELLER.  
PAGE 3 OF 3 PAGES**