



555 East Loockerman St.
Dover, Delaware 19901

Phone: 302.736.2710 Fax: 302.736.2715

www.mcginnisrealty.com

LIGHTHOUSE CHRISTIAN CENTER PROPERTY
662 MILFORD HARRINGTON HWY, MILFORD, KENT COUNTY, DELAWARE, 19963

OFFICE FILE# 218302 MLS# 7265747

CHURCH/COMMERCIAL PROPERTY FOR SALE



SALE PRICE \$1,700,000 * \$94.90 PER SQ FT (BUILDING AREA)

2 ACRES * ZONED C-2 COMMERCIAL * TOWN OF MILFORD

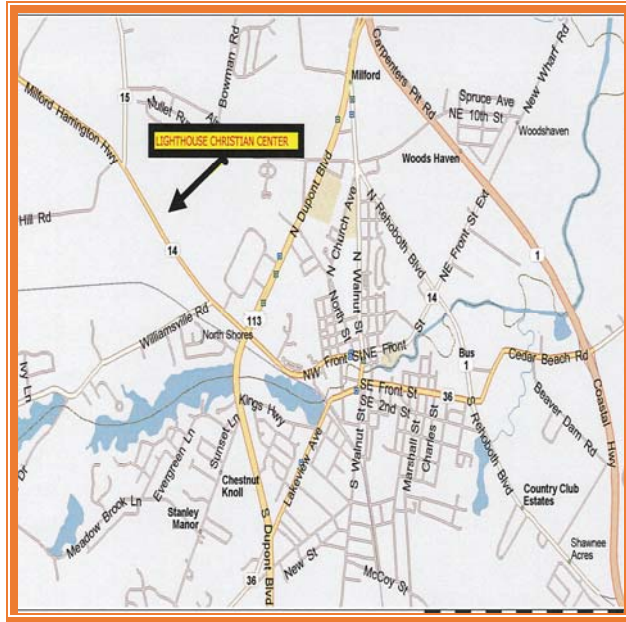
17,920 SQUARE FOOT CHURCH COMPLEX

200 + FOOT FRONTAGE ON BUSY ROUTE 14

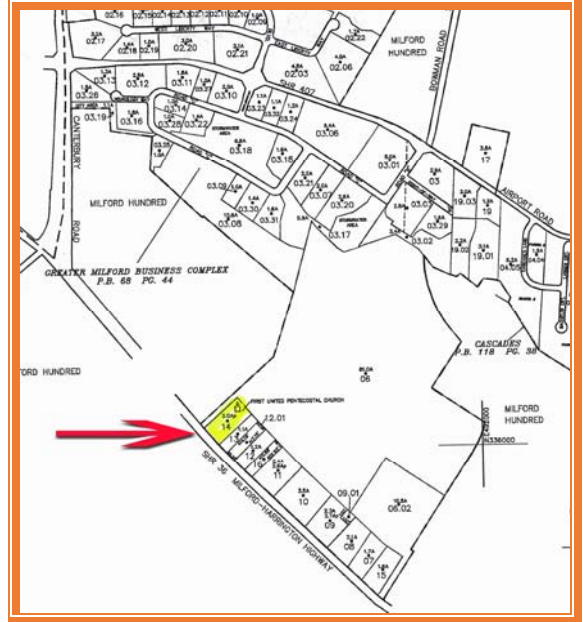
ZONING ALLOWS HOTEL, SCHOOL, RESTAURANT, BANKS AND MORE.

ALL INFORMATION SUBMITTED SUBJECT TO ERRORS AND MODIFICATIONS. ALL INFORMATION
CONTAINED HEREIN OBTAINED FROM RELIABLE SOURCES BUT NOT GUARANTEED. PROSPECTIVE PURCHASERS
SHOULD VERIFY ALL INFORMATION SUBMITTED. LISTING BROKERAGE REPRESENTS SELLER.

PAGE 1 OF 3 PAGES



MARKET MAP



TAX MAP



ALL INFORMATION SUBMITTED SUBJECT TO ERRORS AND MODIFICATIONS. ALL INFORMATION CONTAINED HEREIN OBTAINED FROM RELIABLE SOURCES BUT NOT GUARANTEED. PROSPECTIVE PURCHASERS SHOULD VERIFY ALL INFORMATION SUBMITTED. LISTING BROKERAGE REPRESENTS SELLER.
PAGE 2 OF 3 PAGES



Tax Map Identification MD16 - 173.00-01-1400 - 00001

Deed Reference B - 028 - 383

Zoning C 2 CENTRAL BUSINESS DISTRICT, TOWN OF MILFORD

Total Land Area 2 +/- Acres

Main Building Size 13,120 Square Ft

Followship Building Size 4,800 Square Ft

Total Building Square Footage 17,920 Square Ft

School District Milford

Lot Frontage (Rt 14) 209+/- Feet

FOR ADDITIONAL INFORMATION CONTACT:

**CHUCK SPIEGELMAN, ASSOCIATE BROKER
MCGINNIS COMMERCIAL REAL ESTATE**

OFFICE: 302-736-2710

FAX: 302-736-2715

MOBILE: 302-632-0859

EMAIL: cs@mcginnisrealty.com

**ALL INFORMATION SUBMITTED SUBJECT TO ERRORS AND MODIFICATIONS. ALL INFORMATION
CONTAINED HEREIN OBTAINED FROM RELIABLE SOURCES BUT NOT GUARANTEED. PROSPECTIVE PURCHASERS
SHOULD VERIFY ALL INFORMATION SUBMITTED. LISTING BROKERAGE REPRESENTS SELLER.
PAGE 3 OF 3 PAGES**