



555 East Loockerman St.
Dover, Delaware 19901

Phone: 302.736.2710 Fax: 302.736.2715

www.mcginnisrealty.com

WEBB SLAUGHTER BEACH PROPERTY
3853 DOCKSIDE DR, MILFORD, SUSSEX COUNTY, DELAWARE 19963
OFFICE FILE# 218321 MLS# 7285634

FOR SALE
DEVELOPMENT OPPORTUNITY



REDUCED SALE PRICE \$ 2,500,000 * \$10 +/- PSF LAND

GROWING BEACH AND VACATION COMMUNITY

DOCKS, BOAT & OUTDOOR STORAGE, AND RENTAL UNITS INCLUDED

2,250 SQFT +/- RESIDENCE, 2,000 SQFT +/- RESIDENCE
5,600 SQFT +/- WAREHOUSE/STORE, AS WELL AS OFFICE, STORAGE
AND MOBILE HOMES

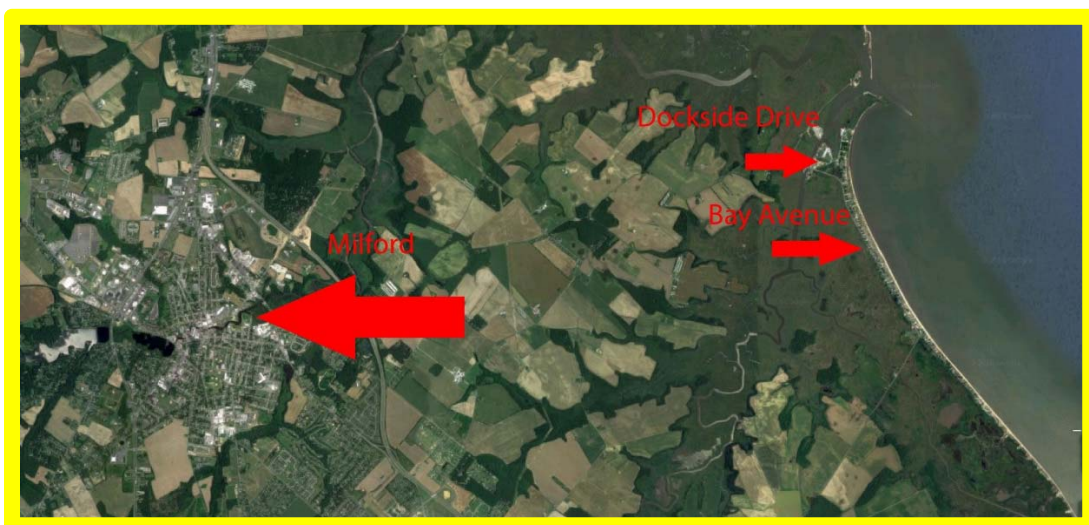
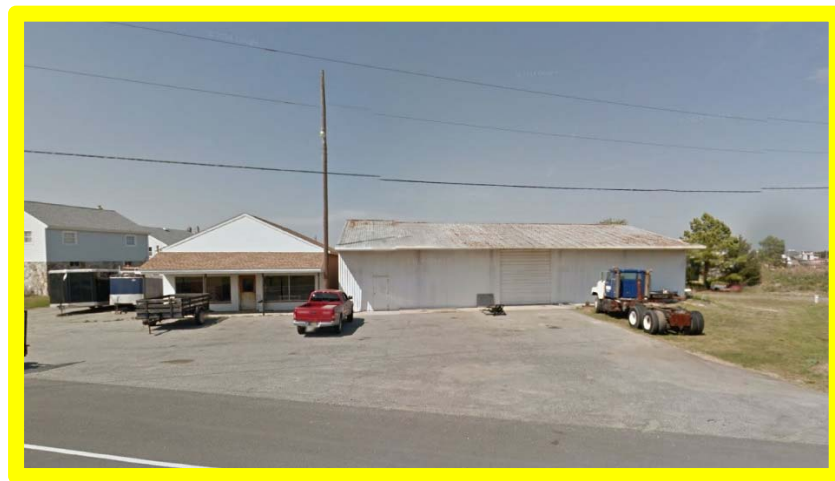
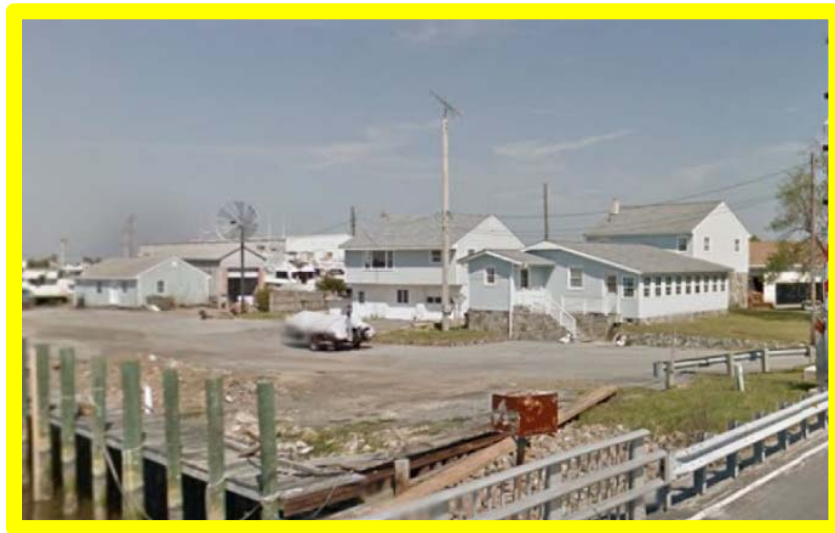
ANNEXATION POTENTIAL

5.7 ACRES +/- WITH 425 FEET +/- OF RIVER FRONTAGE

COMMERCIAL OR RESIDENTIAL DEVELOPMENT POTENTIAL

ALL INFORMATION SUBMITTED SUBJECT TO ERRORS AND MODIFICATIONS. ALL INFORMATION
CONTAINED HEREIN OBTAINED FROM RELIABLE SOURCES BUT NOT GUARANTEED. PROSPECTIVE
PURCHASERS SHOULD VERIFY ALL INFORMATION SUBMITTED. LISTING BROKERAGE REPRESENTS SELLER.

PAGE 1 OF 3 PAGES



ALL INFORMATION SUBMITTED SUBJECT TO ERRORS AND MODIFICATIONS. ALL INFORMATION CONTAINED HEREIN OBTAINED FROM RELIABLE SOURCES BUT NOT GUARANTEED. PROSPECTIVE PURCHASERS SHOULD VERIFY ALL INFORMATION SUBMITTED. LISTING BROKERAGE REPRESENTS SELLER.

PAGE 2 OF 3 PAGES



Tax Map Identification 330-5.00-30.00
 330-5.00-29.00
 330-5.00-26.04

Deed Reference Book 3486 Page 193

Zoning AR1- Sussex County

Land Area 246,000 Sq Ft +/-
 5.700 acre +/-

Frontage 1,000.00 Ft +/-
Depth 400.00 Ft +/-

Assesment \$83,000
Property Taxes \$1,965.00

FOR ADDITIONAL INFORMATION CONTACT:

JEFF SPIEGELMAN, AGENT
MCGINNIS COMMERCIAL REAL ESTATE

OFFICE: 302-736-2710

FAX: 302-736-2715

MOBILE: 302-399-7728

EMAIL: js@mcginnisrealty.com

ALL INFORMATION SUBMITTED SUBJECT TO ERRORS AND MODIFICATIONS. ALL INFORMATION
 CONTAINED HEREIN OBTAINED FROM RELIABLE SOURCES BUT NOT GUARANTEED. PROSPECTIVE
 PURCHASERS SHOULD VERIFY ALL INFORMATION SUBMITTED. LISTING BROKERAGE REPRESENTS SELLER.