



555 East Lookerman St.
Dover, Delaware 19901

McGinnis Commercial Real Estate

Phone: 302.736.2710 Fax: 302.736.2715

www.mcginnisrealty.com

SIMPSON LOG HOMES PROPERTY
131 ROSEMARY ROAD, DOVER, KENT COUNTY, DELAWARE 19904

OFFICE FILE# 219328 MLS# DEK203260

INDUSTRIAL LAND FOR SALE

INDUSTRIAL * MANUFACTURING * WAREHOUSE LAND



SALE PRICE \$ 174,000 * \$ 60,000 PER ACRE

2.90 ACRES IN SMALL 4 LOT INDUSTRIAL PARK

ENTRANCE, UTILITIES, WATER AND SEWER IN PLACE

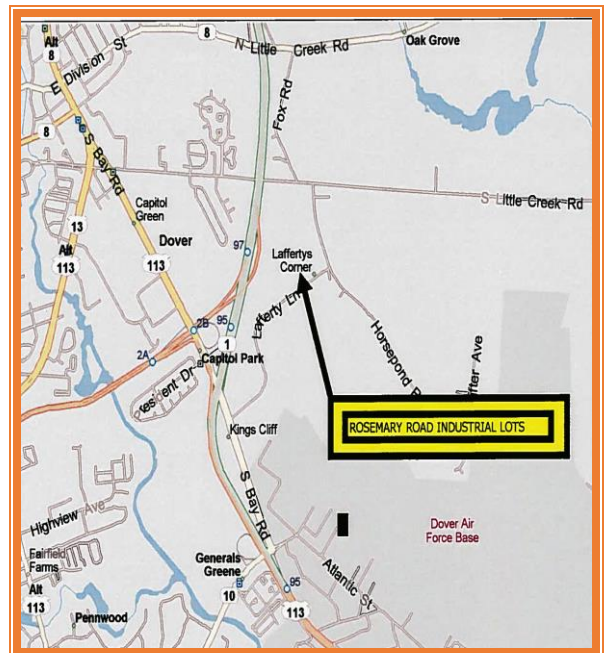
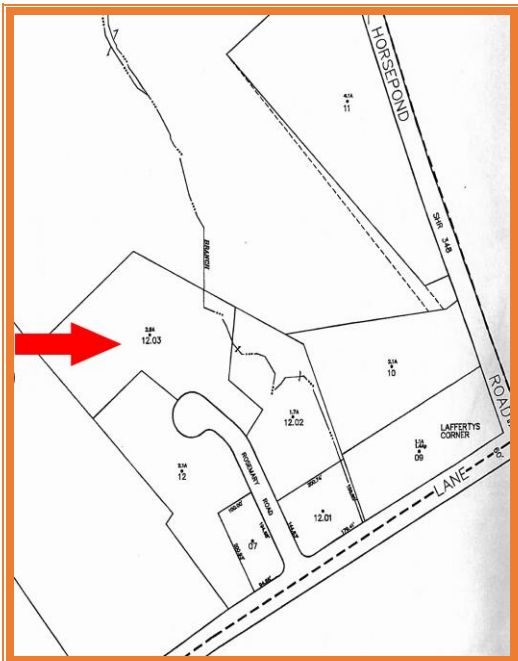
CONVENIENT LOCATION CLOSE TO BAY ROAD AND ROUTE 1

ADDITIONAL ACREAGE AVAILABLE

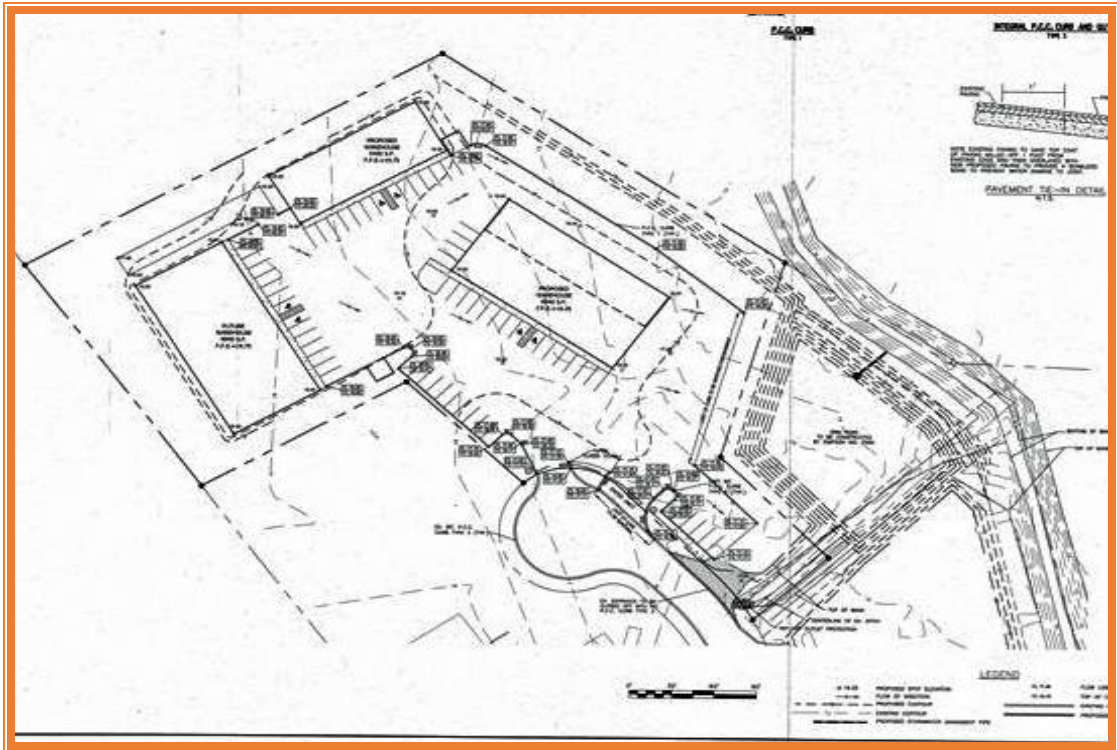
POSSIBLE USES INCLUDE WAREHOUSE OR LIGHT MANUFACTURING

ALL INFORMATION SUBMITTED SUBJECT TO ERRORS AND MODIFICATIONS. ALL INFORMATION CONTAINED HEREIN OBTAINED FROM RELIABLE SOURCES BUT NOT GUARANTEED. PROSPECTIVE PURCHASERS SHOULD VERIFY ALL INFORMATION SUBMITTED. LISTING BROKERAGE REPRESENTS SELLER.
PAGE 1 OF 3 PAGES

Tax Map Identification	ED-05-077.16-02-12.03
Deed Reference	D5766 239 & D668 319
Zoning	M Manufacturing City of Dover
Land Area	2.90 +/- Acres
Bldg Area (sq ft)	None
Entrance	In Place
Utilities	City of Dover
Water and Sewer	City of Dover
TOTAL PROPERTY TAX	\$326.73



ALL INFORMATION SUBMITTED SUBJECT TO ERRORS AND MODIFICATIONS. ALL INFORMATION CONTAINED HEREIN OBTAINED FROM RELIABLE SOURCES BUT NOT GUARANTEED. PROSPECTIVE PURCHASERS SHOULD VERIFY ALL INFORMATION SUBMITTED. LISTING BROKERAGE REPRESENTS SELLER. PAGE 2 OF 3 PAGES



FOR ADDITIONAL INFORMATION CONTACT:

**CHUCK SPIEGELMAN, ASSOCIATE BROKER
MCGINNIS COMMERCIAL REAL ESTATE**

OFFICE: 302-736-2710

FAX: 302-736-2715

MOBILE: 302-632-0859

EMAIL: cs@mcginnisrealty.com

**ALL INFORMATION SUBMITTED SUBJECT TO ERRORS AND MODIFICATIONS. ALL INFORMATION
CONTAINED HEREIN OBTAINED FROM RELIABLE SOURCES BUT NOT GUARANTEED. PROSPECTIVE
PURCHASERS SHOULD VERIFY ALL INFORMATION SUBMITTED. LISTING BROKERAGE REPRESENTS SELLER.
PAGE 3 OF 3 PAGES**