



**555 East Loockerman St.  
Dover, Delaware 19901**

**Phone: 302.736.2710 Fax: 302.736.2715**

**www.mcginnisrealty.com**

**HALPERN BRADFORD STREET  
131 BRADFORD ST, DOVER, KENT COUNTY, DELAWARE 19904**

**OFFICE FILE# 219338 MLS# DEKT230822**



## **RETAIL/OFFICE SPACE FOR LEASE**

**LEASE PRICE \$2,000/MONTH NET**

**1,657 SQ FT RETAIL, OFFICE, RESTAURANT OR MEDICAL AVAILABLE**

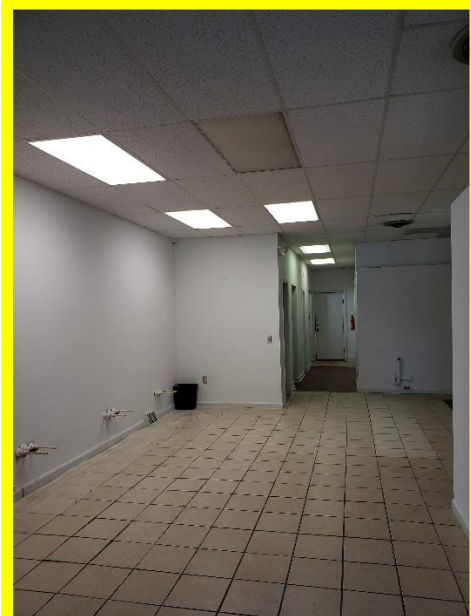
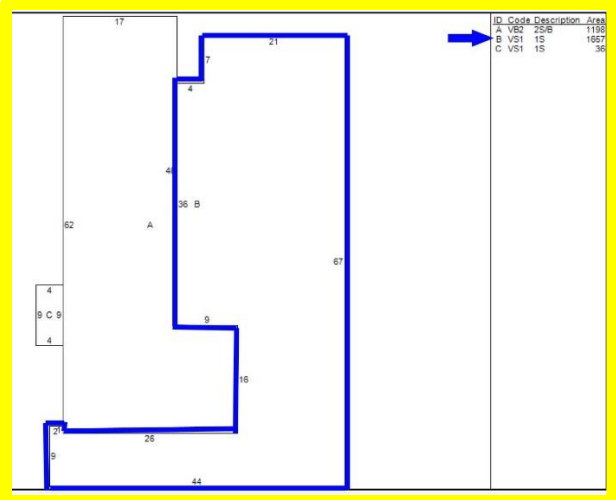
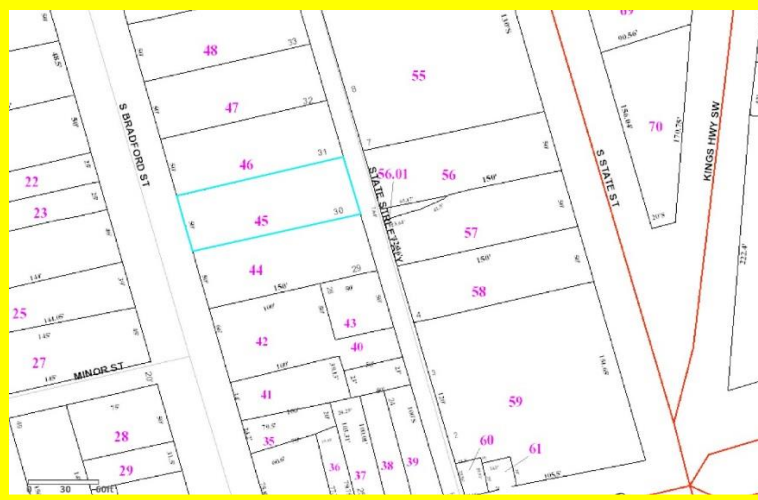
**CONVENIENT LOCATION IN DOWNTOWN DOVER**

**ZONED C-2 CENTRAL COMMERCIAL.**

**MULTIPLE SINK/DRAIN HOOK-UPS. BAR IN PLACE. PRIVATE PARKING LOT**

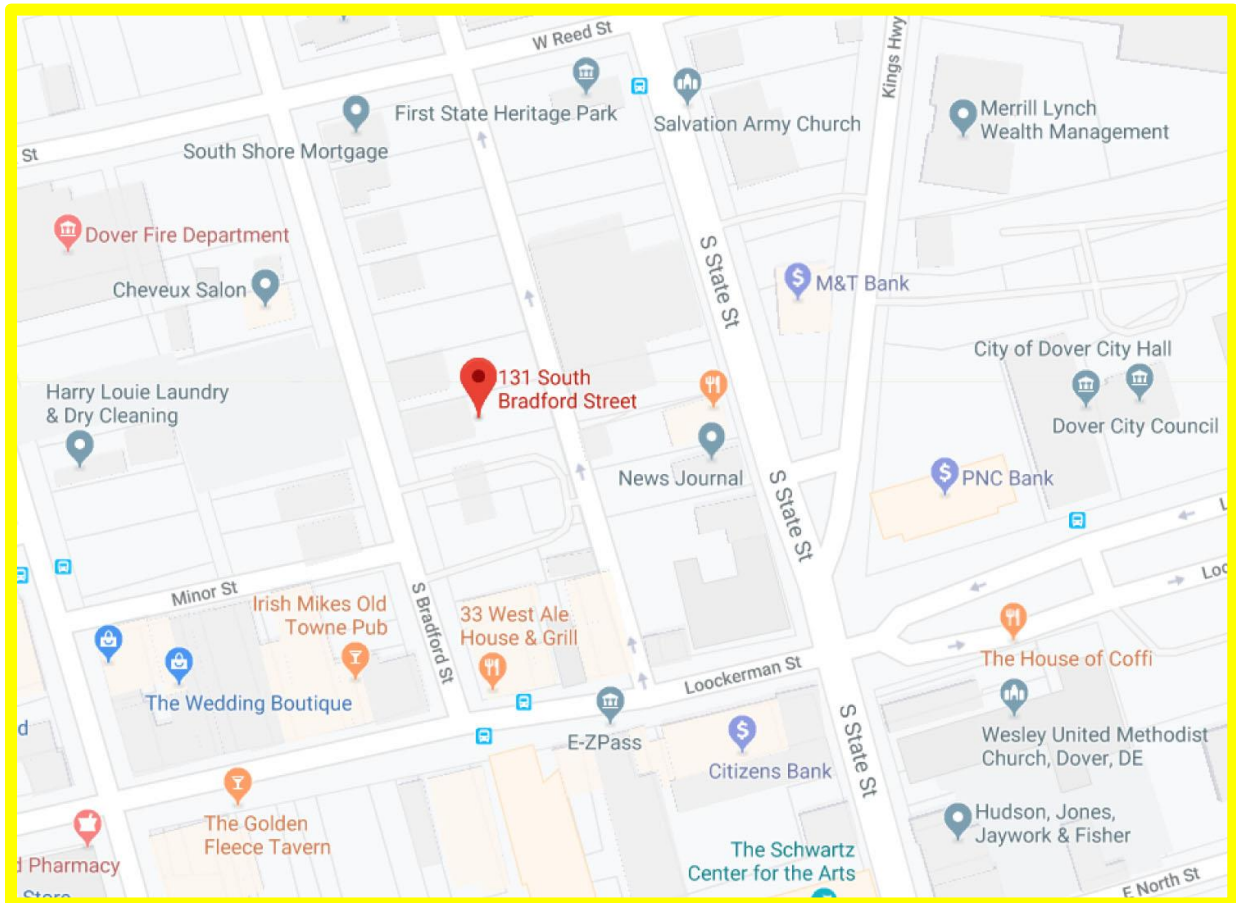
**ALL INFORMATION SUBMITTED SUBJECT TO ERRORS AND MODIFICATIONS. ALL INFORMATION  
CONTAINED HEREIN OBTAINED FROM RELIABLE SOURCES BUT NOT GUARANTEED. PROSPECTIVE PURCHASERS  
SHOULD VERIFY ALL INFORMATION SUBMITTED. LISTING BROKERAGE REPRESENTS SELLER.**

**PAGE 1 OF 4 PAGES**



**ALL INFORMATION SUBMITTED SUBJECT TO ERRORS AND MODIFICATIONS. ALL INFORMATION CONTAINED HEREIN OBTAINED FROM RELIABLE SOURCES BUT NOT GUARANTEED. PROSPECTIVE PURCHASERS SHOULD VERIFY ALL INFORMATION SUBMITTED. LISTING BROKERAGE REPRESENTS SELLER.**  
**PAGE 2 OF 4 PAGES**





**Tax Map Identification** 2-05-07709-02-4500-00001

**Deed Reference** D 6052 0228

**Zoning** C-2 CENTRAL COMMERCIAL  
CITY OF DOVER

<b>Land Area</b>	7,405	sqft +/-
<b>Frontage</b>	50.00	ft +/-
<b>Depth</b>	145.00	ft +/-

<b>Building Area</b>	2,812	sqft +/-
<b>Available</b>	1,657	sqft +/-
<b>Year Built</b>	1920	

<b>County Assesment</b>	71,600
<b>County Taxes</b>	215
<b>City of Dover Assesment</b>	321,200
<b>City of Dover Taxes</b>	916
<b>Total Property Tax</b>	\$1,131.00

**ALL INFORMATION SUBMITTED SUBJECT TO ERRORS AND MODIFICATIONS. ALL INFORMATION CONTAINED HEREIN OBTAINED FROM RELIABLE SOURCES BUT NOT GUARANTEED. PROSPECTIVE PURCHASERS SHOULD VERIFY ALL INFORMATION SUBMITTED. LISTING BROKERAGE REPRESENTS SELLER.**  
**PAGE 3 OF 4 PAGES**



**FOR ADDITIONAL INFORMATION CONTACT:**

**JEFF SPIEGELMAN, SALES AGENT  
MCGINNIS COMMERCIAL REAL ESTATE**

OFFICE: 302-736-2710  
FAX: 302-736-2715  
MOBILE: 302-399-7728  
EMAIL: [js@mcginnisrealty.com](mailto:js@mcginnisrealty.com)

**ALL INFORMATION SUBMITTED SUBJECT TO ERRORS AND MODIFICATIONS. ALL INFORMATION  
CONTAINED HEREIN OBTAINED FROM RELIABLE SOURCES BUT NOT GUARANTEED. PROSPECTIVE PURCHASERS  
SHOULD VERIFY ALL INFORMATION SUBMITTED. LISTING BROKERAGE REPRESENTS SELLER.  
PAGE 4 OF 4 PAGES**