



555 East Loockerman St.
Dover, Delaware 19901

Phone: 302.736.2710 Fax: 302.736.2715

www.mcginnisrealty.com

BBR INVESTMENTS SMYRNA PROPERTY
242 SOUTH DuPONT BLVD, SMYRNA, KENT COUNTY, DELA 19977
FILE #219342 * MLS # DEKT232572



\$199.900 * \$2.42 +/- PER SQUARE FOOT LAND AREA

Tax Map Identification DC17 - 010.18 - 02 - 56.00 - 00001

Deed Reference D9361 - 275

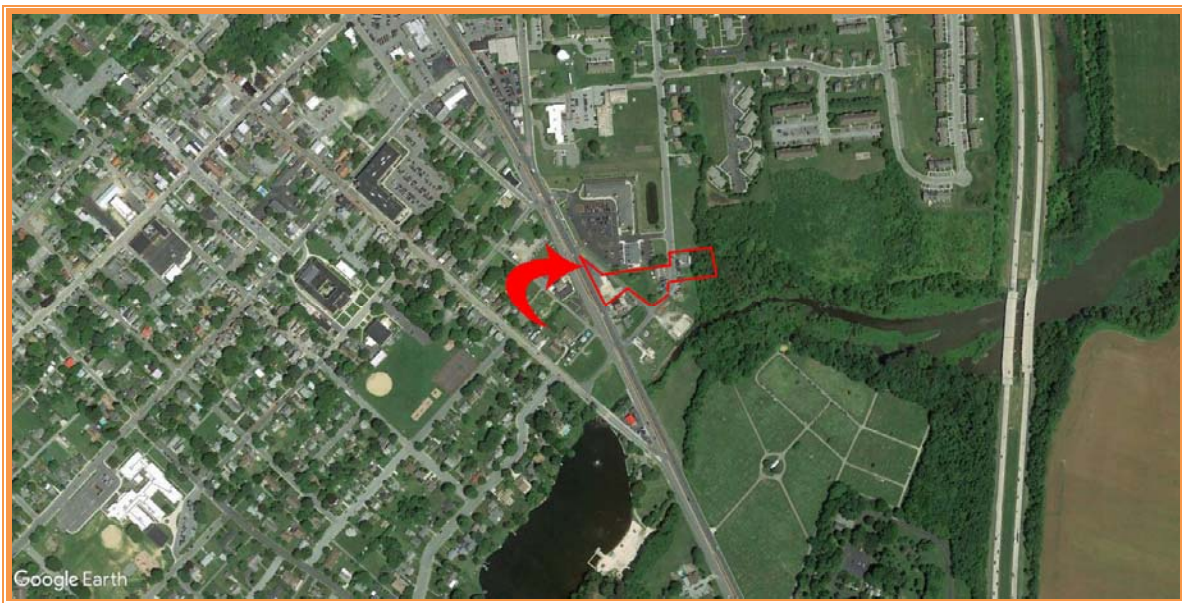
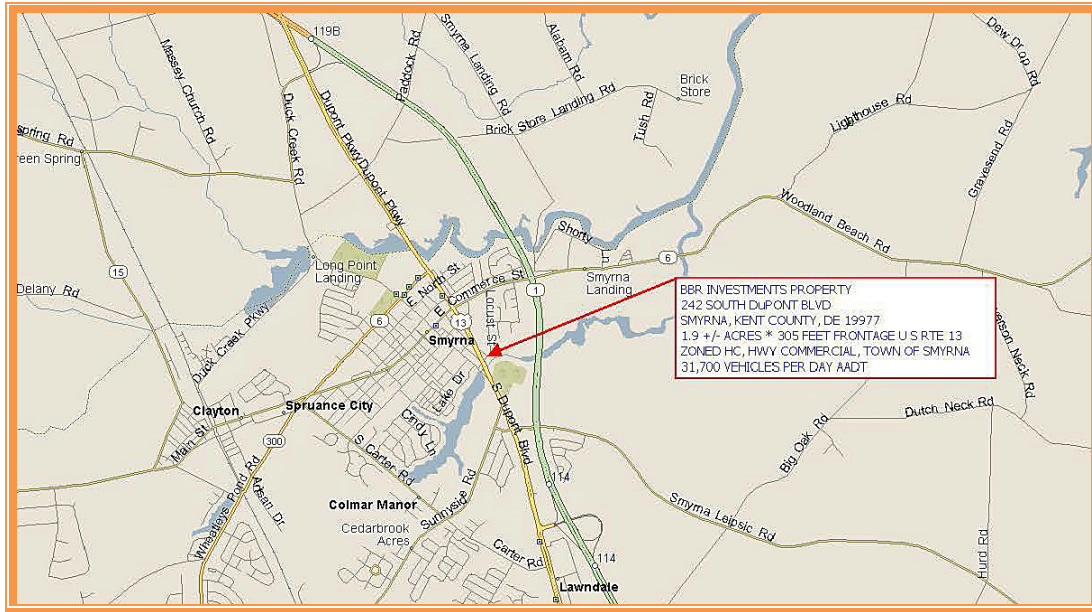
Zoning H-C, HIGHWAY COMMERCIAL, TOWN OF SMYRNA

Census Tract 402.03

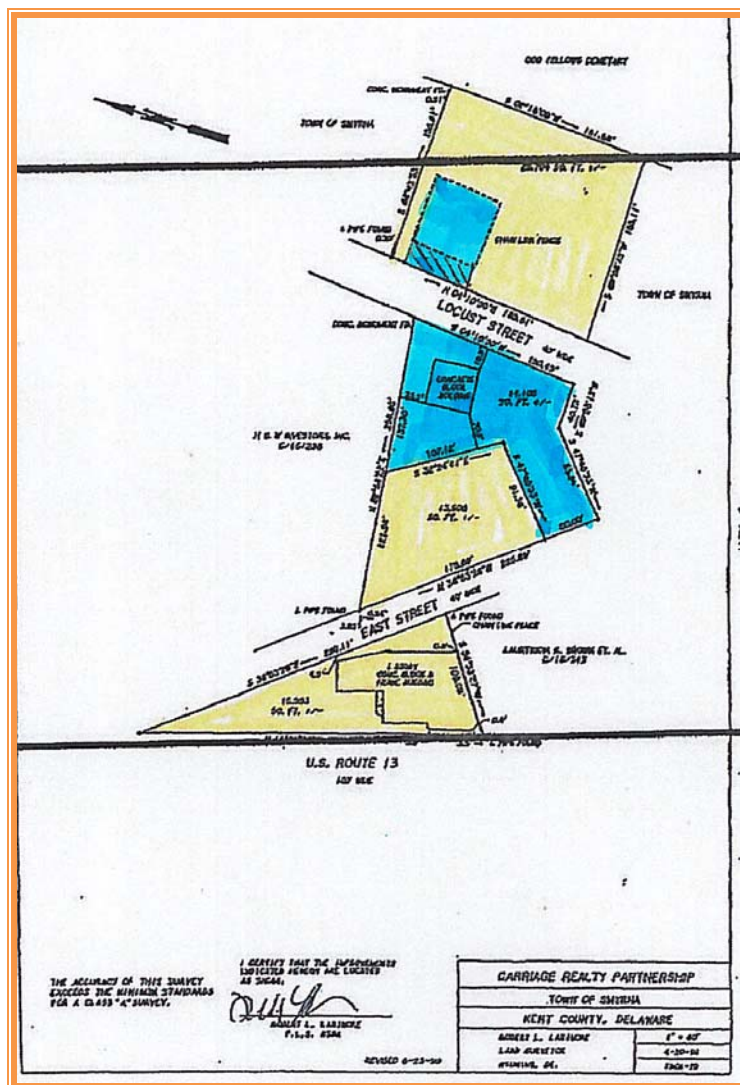
Flood Hazard Map 10001C0061H; Zone X, may 5, 2003

Land Area		82,659	sq ft +/-	1.898	acre
Frontage	302.50	ft +/-	SOUTH DuPONT BLVD		
Frontage	515.00	ft +/-	EAST STREET		
Bldg Area (sq ft)		0	sq ft +/-		
Coverage Ratio		0.00%			
Parking Spaces		0			
Parking Ratio		0.00	per 300 sf		
City Tax Assessment	Per Sq Ft	Rate	Tax	Per Sq Ft	
\$521,700	\$6.31	\$0.440	\$2,295.48	\$0.03	
County Tax Assessment	Per Sq Ft	Rate	Tax	Per Sq Ft	
\$71,700	\$0.87	\$2.1906	\$1,570.66	\$0.02	
TOTAL PROPERTY TAX			\$3,866.14	\$0.05	

ALL INFORMATION SUBMITTED SUBJECT TO ERRORS AND MODIFICATIONS. ALL INFORMATION CONTAINED HEREIN OBTAINED FROM RELIABLE SOURCES BUT NOT GUARANTEED. PROSPECTIVE PURCHASERS SHOULD VERIFY ALL INFORMATION SUBMITTED. LISTING BROKERAGE REPRESENTS SELLER.
PAGE 1 OF 5 PAGES



ALL INFORMATION SUBMITTED SUBJECT TO ERRORS AND MODIFICATIONS. ALL INFORMATION CONTAINED HEREIN OBTAINED FROM RELIABLE SOURCES BUT NOT GUARANTEED. PROSPECTIVE PURCHASERS SHOULD VERIFY ALL INFORMATION SUBMITTED. LISTING BROKERAGE REPRESENTS SELLER.
 PAGE 2 OF 5 PAGES



ALL INFORMATION SUBMITTED SUBJECT TO ERRORS AND MODIFICATIONS. ALL INFORMATION CONTAINED HEREIN OBTAINED FROM RELIABLE SOURCES BUT NOT GUARANTEED. PROSPECTIVE PURCHASERS SHOULD VERIFY ALL INFORMATION SUBMITTED. LISTING BROKERAGE REPRESENTS SELLER.

PAGE 3 OF 5 PAGES

Maint Road No.	Route Number or Road Name	End of Section Mileage	Beginning Point and Break Point Identifier	2018 AADT	Year Last Counted	Traffic Group
K 1	US13 NORTH DUPONT BO		SMYRNA LIMITS, RD. 1			
K 1	US13 NORTH DUPONT BO	0.37	MAIN ST., RD. 65	31682	17	2
K 1	US13 NORTH DUPONT BO	0.88	DEL. 6, COMMERCE ST.	26451	14	2
K 1	US13 NORTH DUPONT BO	1.17	DEL. 300, GLENWOOD A	25754	14	2
K 1	US13 NORTH DUPONT BO	1.40	NEW CASTLE CO. LINE	28564	17	2
K 2	US13 NORTH DUPONT HI		LEIPSIC RD., RD. 88			
K 2	US13 NORTH DUPONT HI	0.35	LEIPSIC RD 88	73949	10	2
K 2	US13 NORTH DUPONT HI	0.50	ENT. TO DOVER DOWNS	50650	18	2
K 2	US13 NORTH DUPONT HI	0.88	ENT. TO DOVER MALL	59871	14	2
K 2	US13 NORTH DUPONT HI	1.91	SCARBOROUGH RD., RD.	64578	3	2
K 2	US13 NORTH DUPONT HI	2.17	N.DOVER LIMITS (RD10	49541	14	2
K 2	US13 NORTH DUPONT HI	3.96	DEL. 42, FAST LANDIN	37221	13	2
K 2	US13 NORTH DUPONT HI	8.18	RD 150B E.B.	30648	18	2
K 2	US13 NORTH DUPONT HI	8.87	SMYRNA-LEIPSIC RD.,	32284	17	2



ALL INFORMATION SUBMITTED SUBJECT TO ERRORS AND MODIFICATIONS. ALL INFORMATION CONTAINED HEREIN OBTAINED FROM RELIABLE SOURCES BUT NOT GUARANTEED. PROSPECTIVE PURCHASERS SHOULD VERIFY ALL INFORMATION SUBMITTED. LISTING BROKERAGE REPRESENTS SELLER.
PAGE 4 OF 5 PAGES



ALL INFORMATION SUBMITTED SUBJECT TO ERRORS AND MODIFICATIONS. ALL INFORMATION
CONTAINED HEREIN OBTAINED FROM RELIABLE SOURCES BUT NOT GUARANTEED. PROSPECTIVE PURCHASERS
SHOULD VERIFY ALL INFORMATION SUBMITTED. LISTING BROKERAGE REPRESENTS SELLER.
PAGE 5 OF 5 PAGES