



555 East Lookerman St.  
Dover, Delaware 19901

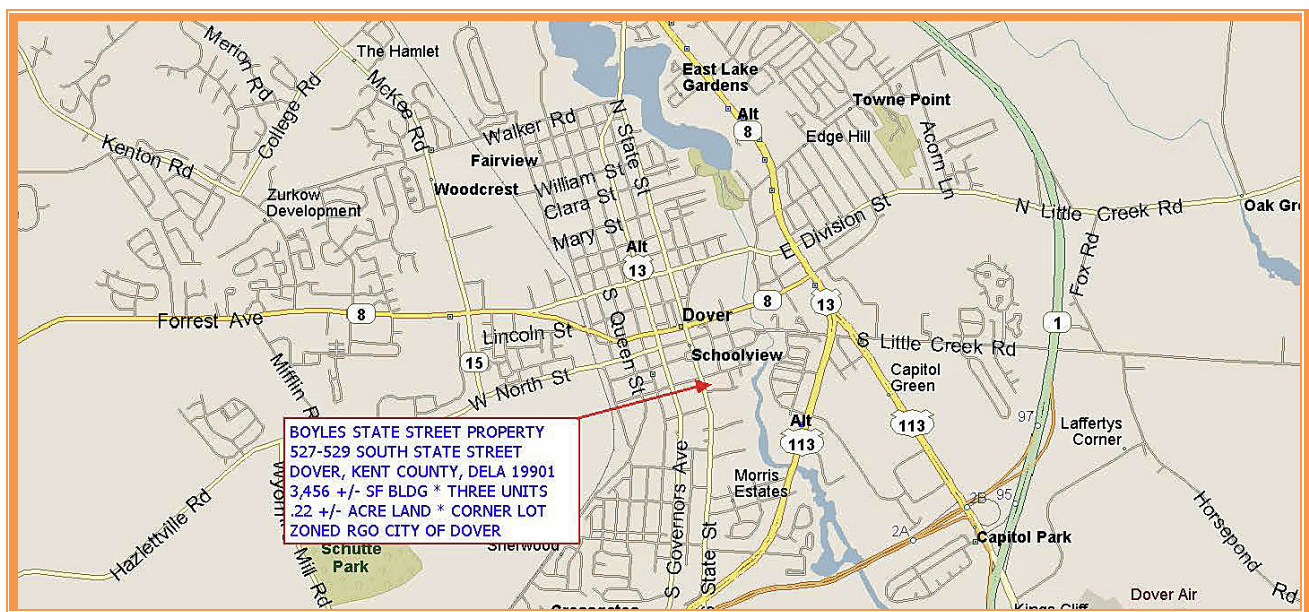
Phone: 302.736.2710 Fax: 302.736.2715

[www.mcginnisrealty.com](http://www.mcginnisrealty.com)

**BOYLES STATE STREET PROPERTY**  
**527-529 SOUTH STATE ST, DOVER, KENT COUNTY, DELA 19901**  
**FILE #220348 \* MLS # DEKT241392**



**\$349,000 \* \$101 +/- PER SQUARE FOOT BLDG AREA**



ALL INFORMATION SUBMITTED SUBJECT TO ERRORS AND MODIFICATIONS. ALL INFORMATION CONTAINED HEREIN OBTAINED FROM RELIABLE SOURCES BUT NOT GUARANTEED. PROSPECTIVE PURCHASERS SHOULD VERIFY ALL INFORMATION SUBMITTED. LISTING BROKERAGE REPRESENTS SELLER.  
PAGE 1 OF 5 PAGES

	529 SOUTH STATE STREET	527A SOUTH STATE STREET	527A SOUTH STATE STREET
LOCATION	FIRST FLOOR	SECOND FLOOR NORTH	SECOND FLOOR SOUTH
USE	RESIDENCE	RESIDENCE APT	RESIDENCE APT
SIZE (sf +/-)	1,440	1,008	1,008
ROOMS	5	5	5
BEDROOMS	2	3	3
BATHROOMS	1	1	1
METERS (SEPARATE)	ELECTRIC	ELECTRIC	ELECTRIC
	NATURAL GAS	NATURAL GAS	NATURAL GAS
	SEWER/WATER	SEWER/WATER	SEWER/WATER
BASEMENT	ELECTRIC METER		
	LAUNDRY FACILITIES	LAUNDRY FACILITIES	LAUNDRY FACILITIES
HEAT	GAS HWBB	GAS HWBB	GAS HWBB
AIR CONDITIONING	WINDOW	WINDOW	WINDOW

ALL INFORMATION SUBMITTED SUBJECT TO ERRORS AND MODIFICATIONS. ALL INFORMATION CONTAINED HEREIN OBTAINED FROM RELIABLE SOURCES BUT NOT GUARANTEED. PROSPECTIVE PURCHASERS SHOULD VERIFY ALL INFORMATION SUBMITTED. LISTING BROKERAGE REPRESENTS SELLER.  
PAGE 2 OF 5 PAGES



**Tax Map Identification** ED - 05 - 07709 - 05 - 4700 - 00001

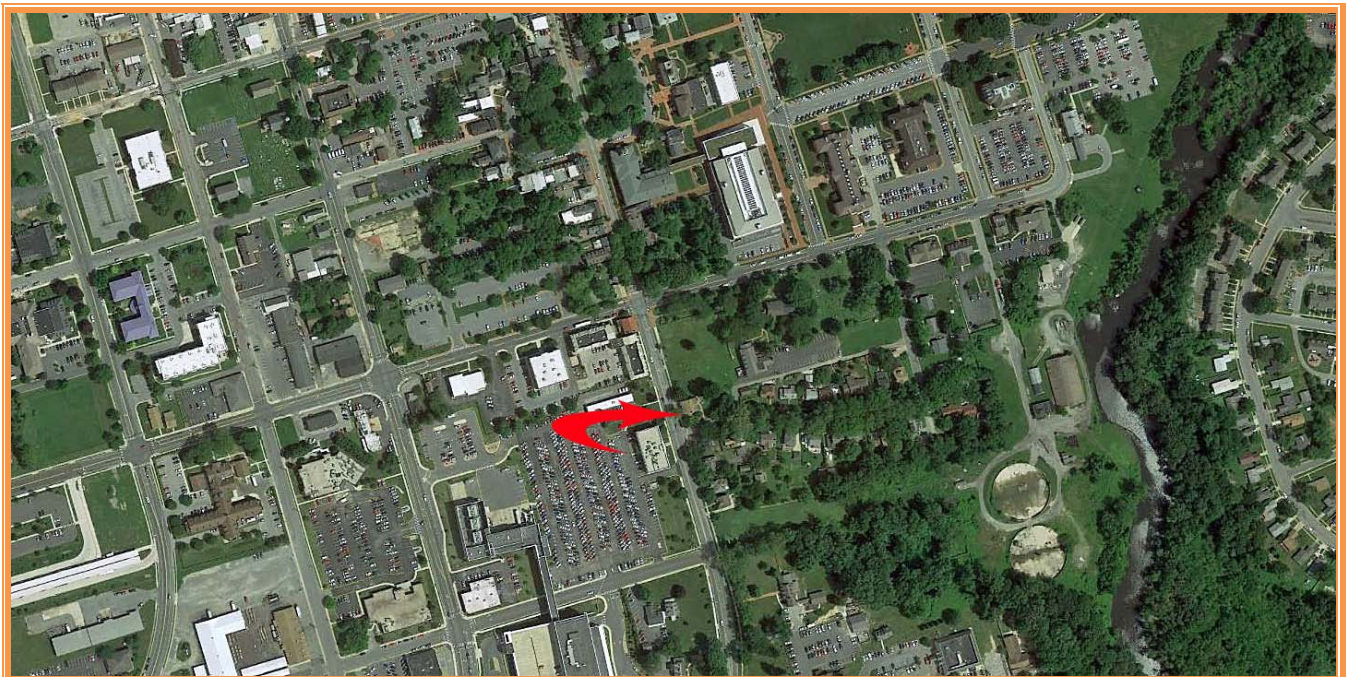
**Deed Reference** D8933 - 070

**Zoning** RGO, GROUP RESIDENTIAL & OFFICE, CITY OF DOVER

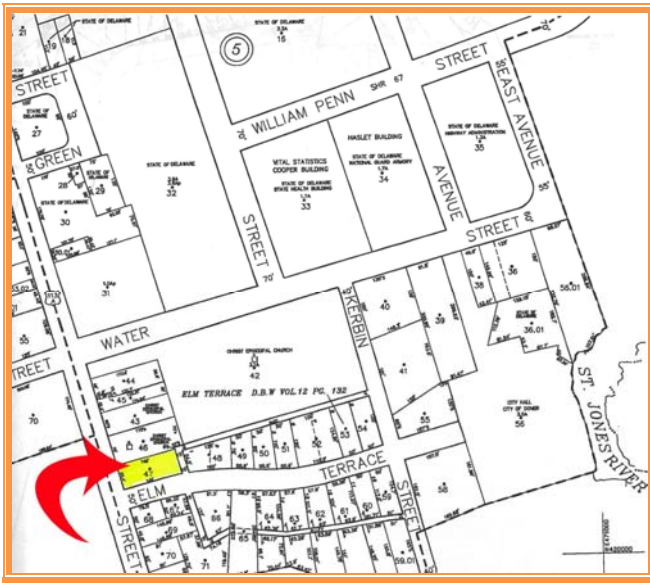
**Census Tract** 413

**Flood Hazard Map** 10001C0169J; ZONE X, JULY 7, 2014

Land Area		9,775	sq ft +/-	0.224	acre
Frontage	70.05	ft +/-	South State Street		
Depth	145.52	ft +/-	Elm Terrace		
Bldg Area (sq ft)		3,456	sq ft +/-		
Coverage Ratio		35.36%			
Parking Spaces		8			
Parking Ratio		0.69	per 300 sf		
City Tax Assessment	Per Sq Ft	Rate	Tax	Per Sq Ft	
\$298,200	\$86.28	\$0.405	\$1,207.71	\$0.35	
County Tax Assessment	Per Sq Ft	Rate	Tax	Per Sq Ft	
\$44,800	\$12.96	\$2.6475	\$1,186.08	\$0.34	
TOTAL PROPERTY TAX			\$2,393.79	\$0.69	

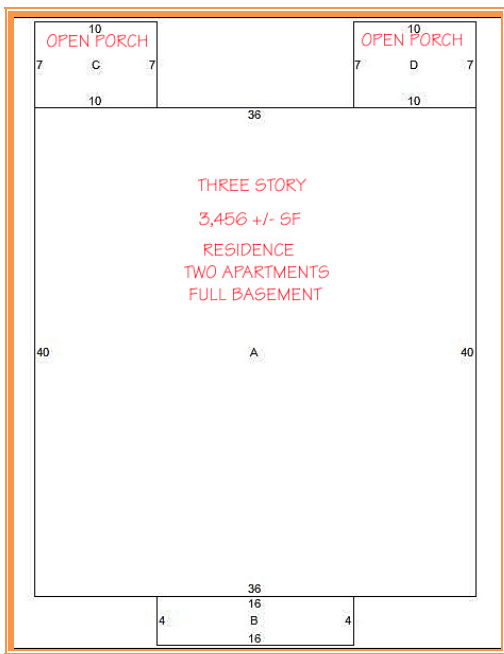


ALL INFORMATION SUBMITTED SUBJECT TO ERRORS AND MODIFICATIONS. ALL INFORMATION  
CONTAINED HEREIN OBTAINED FROM RELIABLE SOURCES BUT NOT GUARANTEED. PROSPECTIVE PURCHASERS  
SHOULD VERIFY ALL INFORMATION SUBMITTED. LISTING BROKERAGE REPRESENTS SELLER.  
PAGE 3 OF 5 PAGES



ALL INFORMATION SUBMITTED SUBJECT TO ERRORS AND MODIFICATIONS. ALL INFORMATION CONTAINED HEREIN OBTAINED FROM RELIABLE SOURCES BUT NOT GUARANTEED. PROSPECTIVE PURCHASERS SHOULD VERIFY ALL INFORMATION SUBMITTED. LISTING BROKERAGE REPRESENTS SELLER.  
PAGE 4 OF 5 PAGES





ALL INFORMATION SUBMITTED SUBJECT TO ERRORS AND MODIFICATIONS. ALL INFORMATION CONTAINED HEREIN OBTAINED FROM RELIABLE SOURCES BUT NOT GUARANTEED. PROSPECTIVE PURCHASERS SHOULD VERIFY ALL INFORMATION SUBMITTED. LISTING BROKERAGE REPRESENTS SELLER.  
PAGE 5 OF 5 PAGES