



555 East Lookerman St.
Dover, Delaware 19901

Phone: 302.736.2710 Fax: 302.736.2715

www.mcginisrealty.com

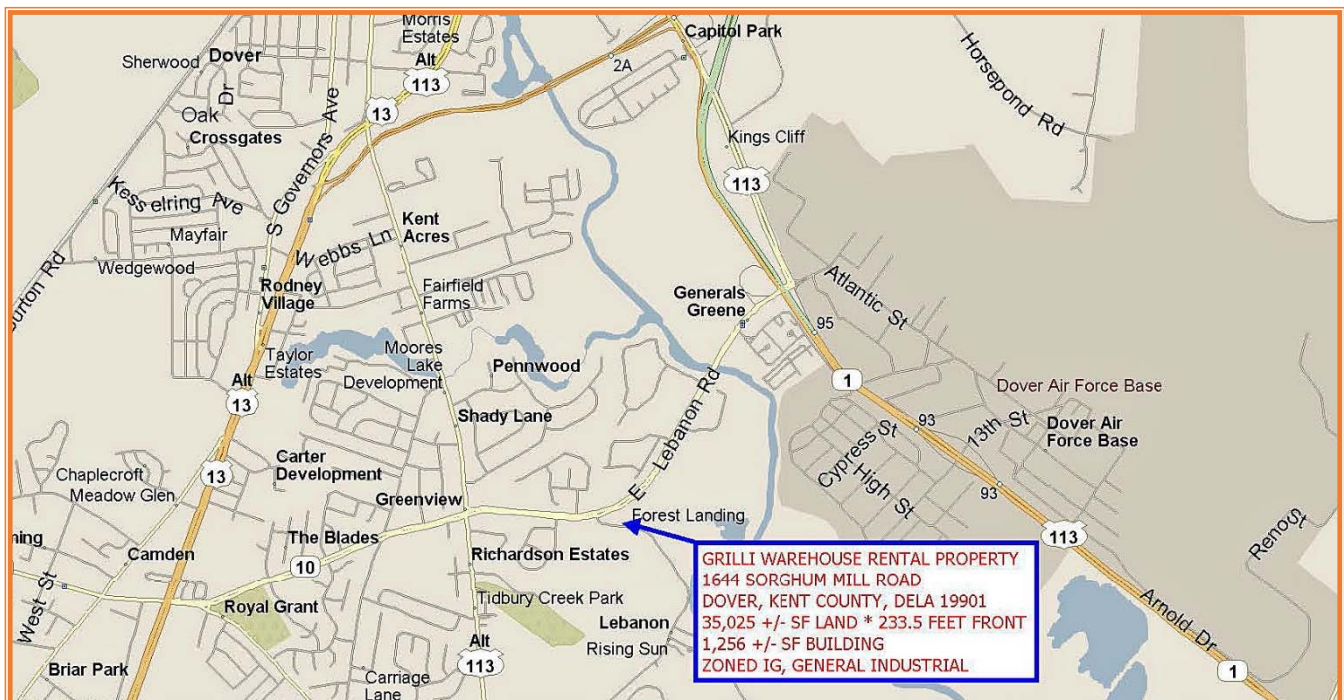
J GRILLI RENTAL PROPERTY

1644 SORGHUM MILL ROAD, DOVER, KENT COUNTY, DE 19901

FILE #220351 * MLS # N/A



1,256 SQUARE FEET * \$9.56 PSF * \$1,000 PER MONTH PLUS UTILITIES



ALL INFORMATION SUBMITTED SUBJECT TO ERRORS AND MODIFICATIONS. ALL INFORMATION
CONTAINED HEREIN OBTAINED FROM RELIABLE SOURCES BUT NOT GUARANTEED. PROSPECTIVE LESSEES SHOULD
VERIFY ALL INFORMATION SUBMITTED. LISTING BROKERAGE REPRESENTS LESSOR.

Tax Map Identification NM00 - 08600 - 01 - 3600 - 00002

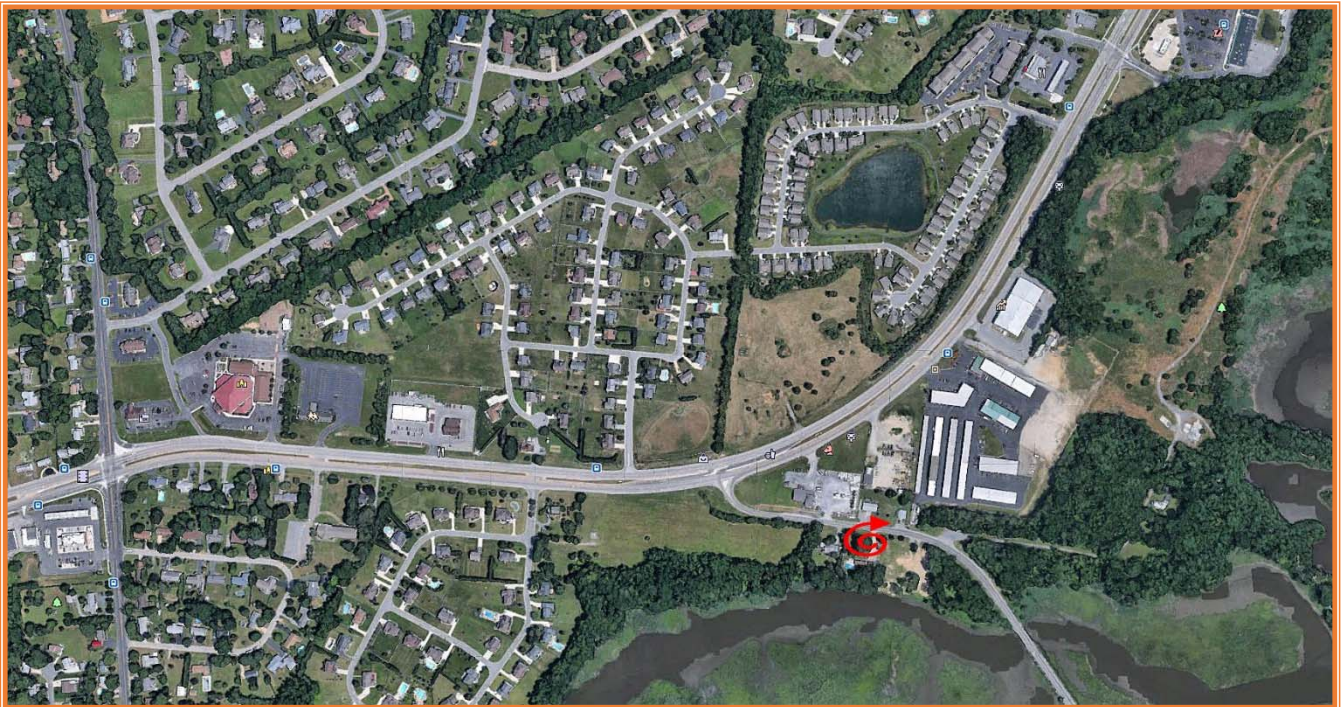
Deed Reference D6674 - 292

Zoning IG, GENERAL INDUSTRIAL, KENT COUNTY

Census Tract 412

Flood Hazard Map 10001C0232J; Zone X; July 7, 2014

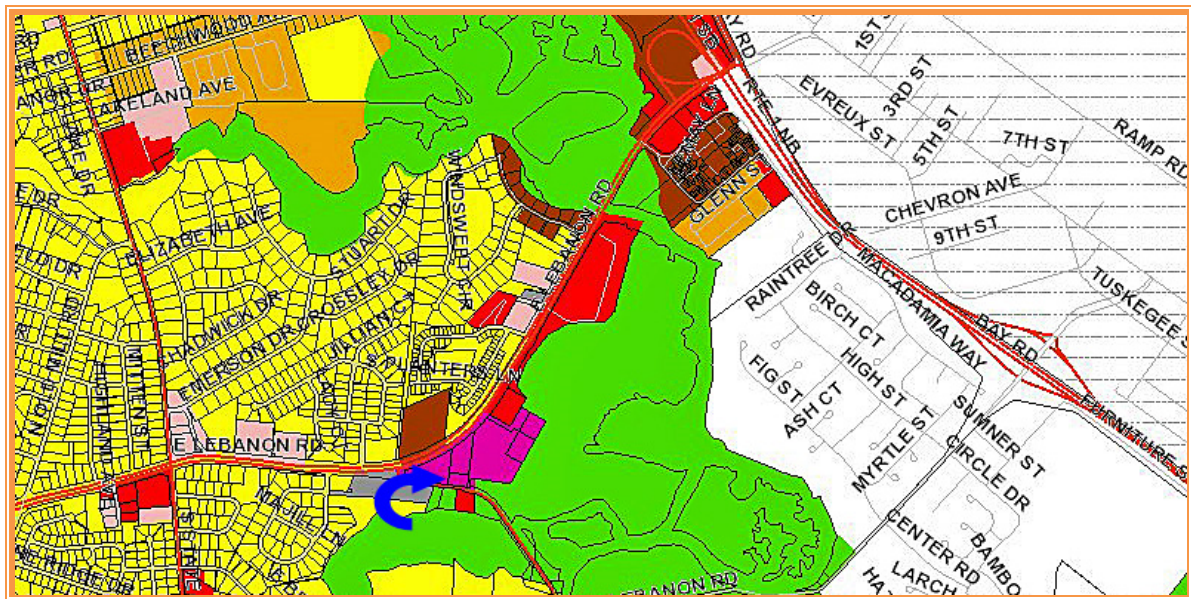
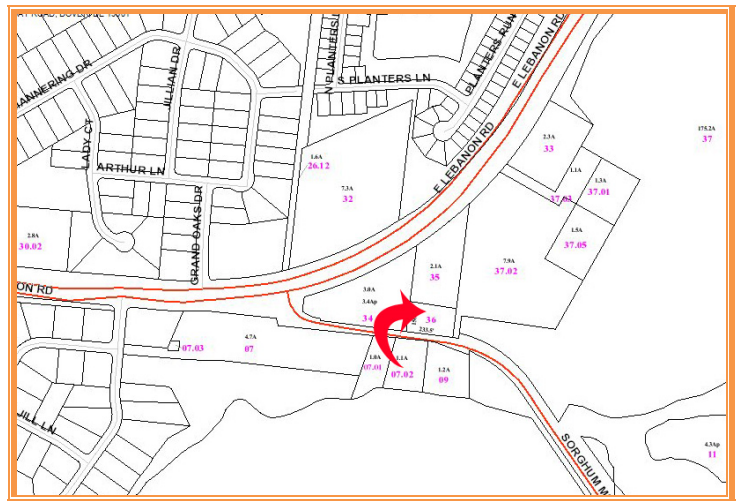
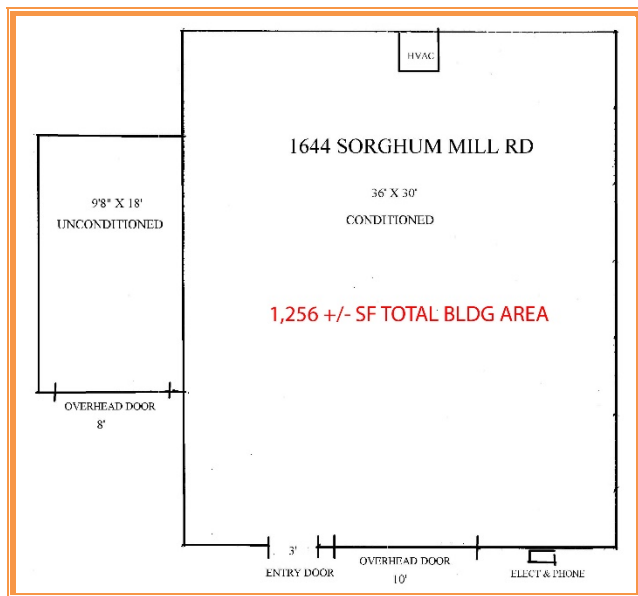
Land Area		35,025	sq ft +/-	0.804	acre
Frontage	233.50	ft +/-			
Depth	150.00	ft +/-			
Bldg Area (sq ft)	1,256	sq ft +/-	1644		
Bldg Area (sq ft)	1,800	sq ft +/-	1670		
TOTAL BLDG AREA		3,056	sq ft +/-		
Coverage Ratio		8.72%			
Parking Spaces		8			
Parking Ratio		1.31	per 500 sf		
City Tax Assessment		Per Sq Ft	Rate	Tax	Per Sq Ft
\$0		\$0.00	\$0.440	\$0.00	\$0.00
County Tax Assessment		Per Sq Ft	Rate	Tax	Per Sq Ft
\$46,400		\$15.19	\$2.3258	\$1,079.17	\$0.35
TOTAL PROPERTY TAX				\$1,079.17	\$0.35



ALL INFORMATION SUBMITTED SUBJECT TO ERRORS AND MODIFICATIONS. ALL INFORMATION CONTAINED HEREIN OBTAINED FROM RELIABLE SOURCES BUT NOT GUARANTEED. PROSPECTIVE LESSEES SHOULD VERIFY ALL INFORMATION SUBMITTED. LISTING BROKERAGE REPRESENTS LESSOR.



ALL INFORMATION SUBMITTED SUBJECT TO ERRORS AND MODIFICATIONS. ALL INFORMATION
CONTAINED HEREIN OBTAINED FROM RELIABLE SOURCES BUT NOT GUARANTEED. PROSPECTIVE LESSEES SHOULD
VERIFY ALL INFORMATION SUBMITTED. LISTING BROKERAGE REPRESENTS LESSOR.
PAGE 3 OF 5 PAGES



ALL INFORMATION SUBMITTED SUBJECT TO ERRORS AND MODIFICATIONS. ALL INFORMATION CONTAINED HEREIN OBTAINED FROM RELIABLE SOURCES BUT NOT GUARANTEED. PROSPECTIVE LESSEES SHOULD VERIFY ALL INFORMATION SUBMITTED. LISTING BROKERAGE REPRESENTS LESSOR.



ALL INFORMATION SUBMITTED SUBJECT TO ERRORS AND MODIFICATIONS. ALL INFORMATION
CONTAINED HEREIN OBTAINED FROM RELIABLE SOURCES BUT NOT GUARANTEED. PROSPECTIVE LESSEES SHOULD
VERIFY ALL INFORMATION SUBMITTED. LISTING BROKERAGE REPRESENTS LESSOR.
PAGE 5 OF 5 PAGES