



555 East Lookerman St.
Dover, Delaware 19901

Phone: 302.736.2710 Fax: 302.736.2715

www.mcginnisrealty.com

REILLY MILLCHOP SHOP PROPERTY
491 MILLCHOP LANE, MAGNOLIA, KENT COUNTY, DE 19962
FILE #222368 * MLS # DEKT2009438



\$ 173,000 * \$ 78+/- PER SQUARE FOOT BLDG AREA



**ALL INFORMATION SUBMITTED SUBJECT TO ERRORS AND MODIFICATIONS. ALL INFORMATION
CONTAINED HEREIN OBTAINED FROM RELIABLE SOURCES BUT NOT GUARANTEED. PROSPECTIVE PURCHASERS
SHOULD VERIFY ALL INFORMATION SUBMITTED. LISTING BROKERAGE REPRESENTS SELLER.
PAGE 1 OF 4 PAGES**

Tax Map Identification NM - 00 - 11102 - 02 - 1500 - 0001

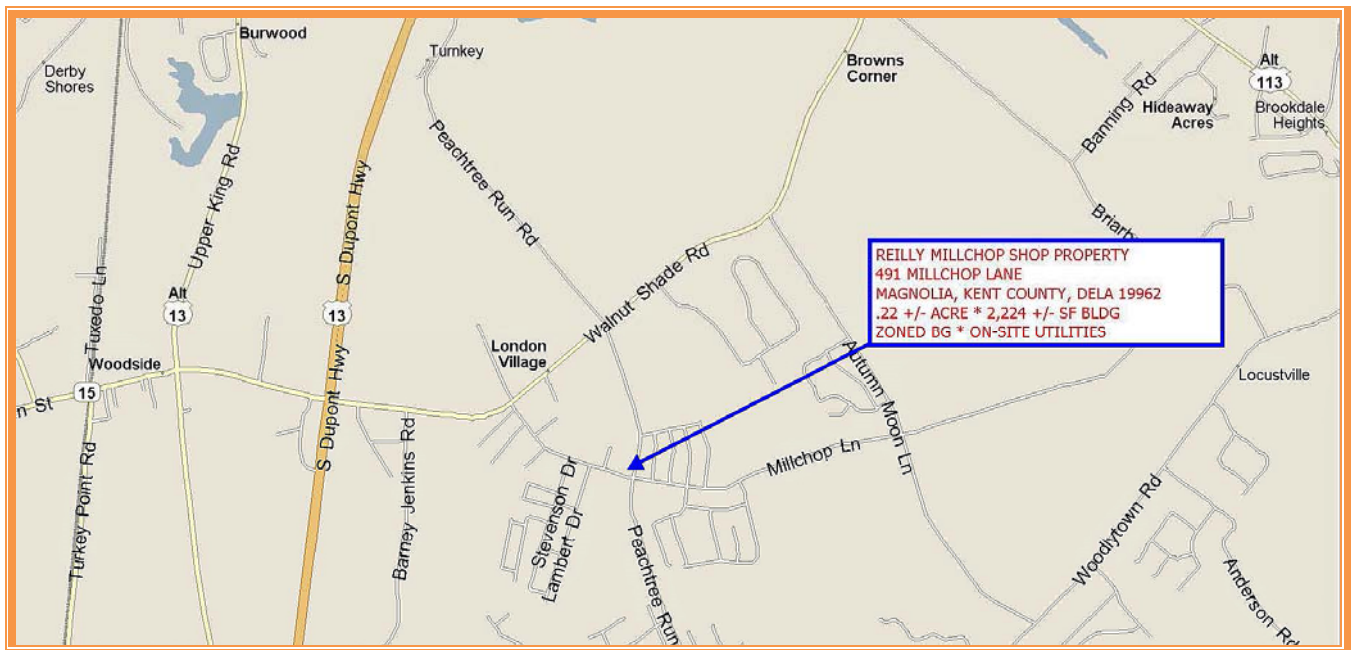
Deed Reference D10429 - 148

Zoning BG, GENERAL BUSINESS, KENT COUNTY

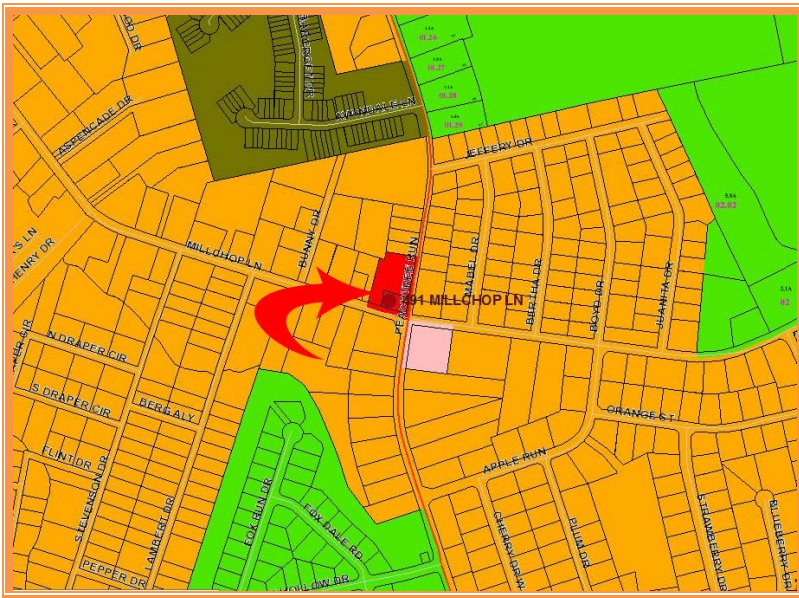
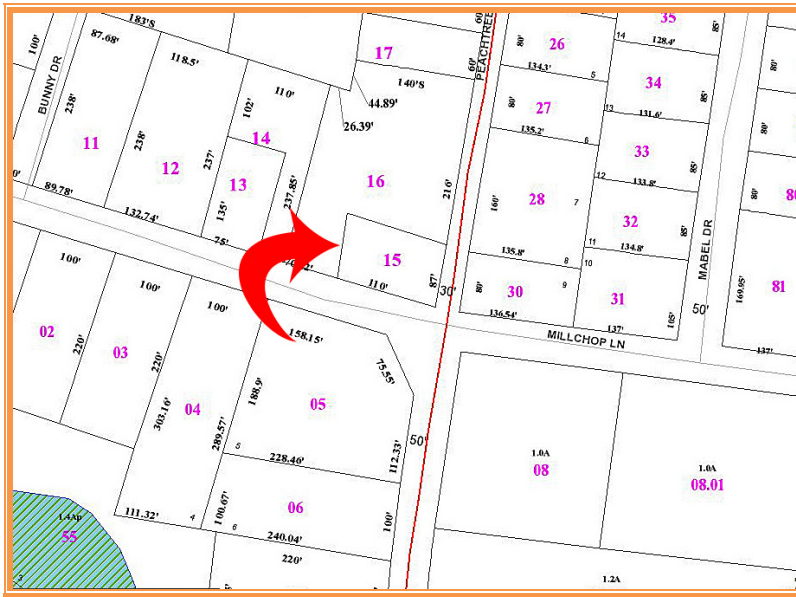
Census Tract 422

Flood Hazard Map 10001C0233J; Zone AE, JULY 7, 2014

Land Area	9,570	sq ft +/-	0.220	acre
Frontage	87.00	lf +/-		
Depth - Frontage	110.00	lf +/-		
Bldg Area (sq ft)	2,224	sq ft +/-		
Coverage Ratio	23.24%			
Parking Spaces	2			
Parking Ratio	0.27	per	300	sq ft +/-
City Tax Assessment	Per Sq Ft	Rate	Tax	Per Sq Ft
\$0	\$0.00	\$0.440	\$0.00	\$0.00
County Tax Assessment	Per Sq Ft	Rate	Tax	Per Sq Ft
\$33,300	\$14.97	\$2.3651	\$787.58	\$0.35
TOTAL PROPERTY TAX			\$787.58	\$0.35



ALL INFORMATION SUBMITTED SUBJECT TO ERRORS AND MODIFICATIONS. ALL INFORMATION CONTAINED HEREIN OBTAINED FROM RELIABLE SOURCES BUT NOT GUARANTEED. PROSPECTIVE PURCHASERS SHOULD VERIFY ALL INFORMATION SUBMITTED. LISTING BROKERAGE REPRESENTS SELLER.
PAGE 2 OF 4 PAGES



ALL INFORMATION SUBMITTED SUBJECT TO ERRORS AND MODIFICATIONS. ALL INFORMATION CONTAINED HEREIN OBTAINED FROM RELIABLE SOURCES BUT NOT GUARANTEED. PROSPECTIVE PURCHASERS SHOULD VERIFY ALL INFORMATION SUBMITTED. LISTING BROKERAGE REPRESENTS SELLER.
PAGE 3 OF 4 PAGES



ALL INFORMATION SUBMITTED SUBJECT TO ERRORS AND MODIFICATIONS. ALL INFORMATION
CONTAINED HEREIN OBTAINED FROM RELIABLE SOURCES BUT NOT GUARANTEED. PROSPECTIVE PURCHASERS
SHOULD VERIFY ALL INFORMATION SUBMITTED. LISTING BROKERAGE REPRESENTS SELLER.
PAGE 4 OF 4 PAGES