

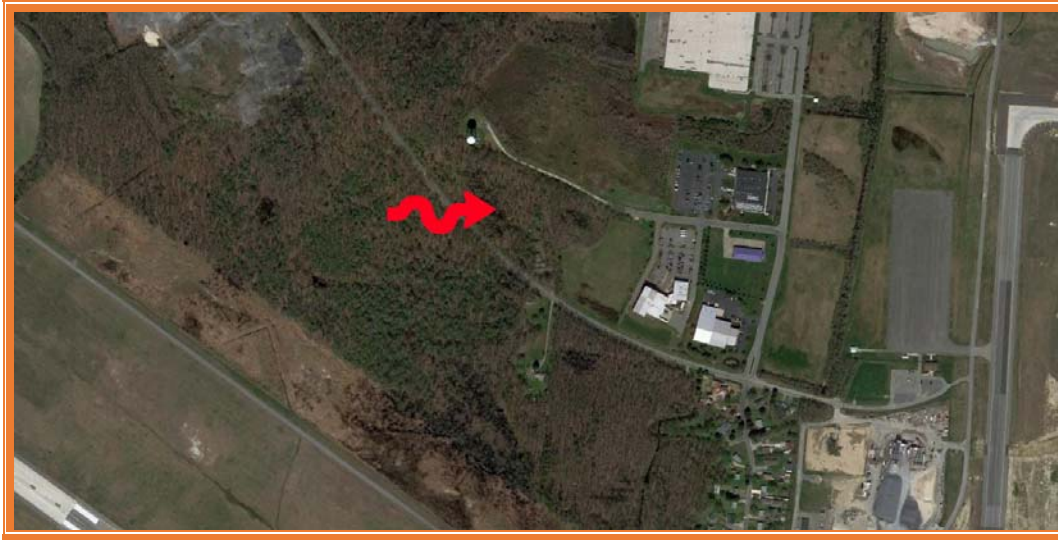


555 East Lookerman St.
Dover, Delaware 19901

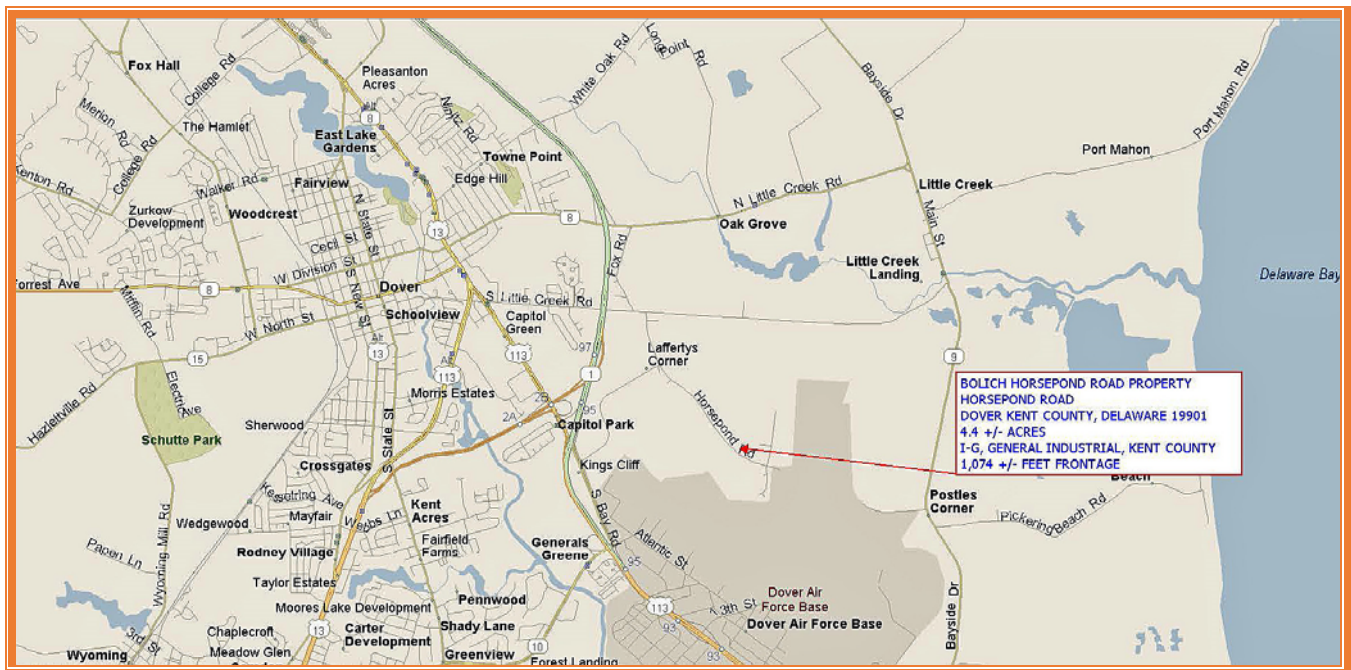
Phone: 302.736.2710 Fax: 302.736.2715

www.mcginnisrealty.com

BOLICH HORSEPOND ROAD PROPERTY
HORSEPOND ROAD, DOVER, KENT COUNTY, DELAWARE 19901
OFFICE FILE # : 223380 * MLS # : DEKT2021954



SALE PRICE \$ 175,000 * \$ 40,000 PER ACRE +/- * \$ 0.92 PSF +/-



**ALL INFORMATION SUBMITTED SUBJECT TO ERRORS AND MODIFICATIONS. ALL INFORMATION
 CONTAINED HEREIN OBTAINED FROM RELIABLE SOURCES BUT NOT GUARANTEED. PROSPECTIVE PURCHASERS
 SHOULD VERIFY ALL INFORMATION SUBMITTED. LISTING BROKERAGE REPRESENTS SELLER.**
PAGE 1 OF 4 PAGES

Tax Map Identification ED00 - 087.00 - 01 - 0100 - 00001

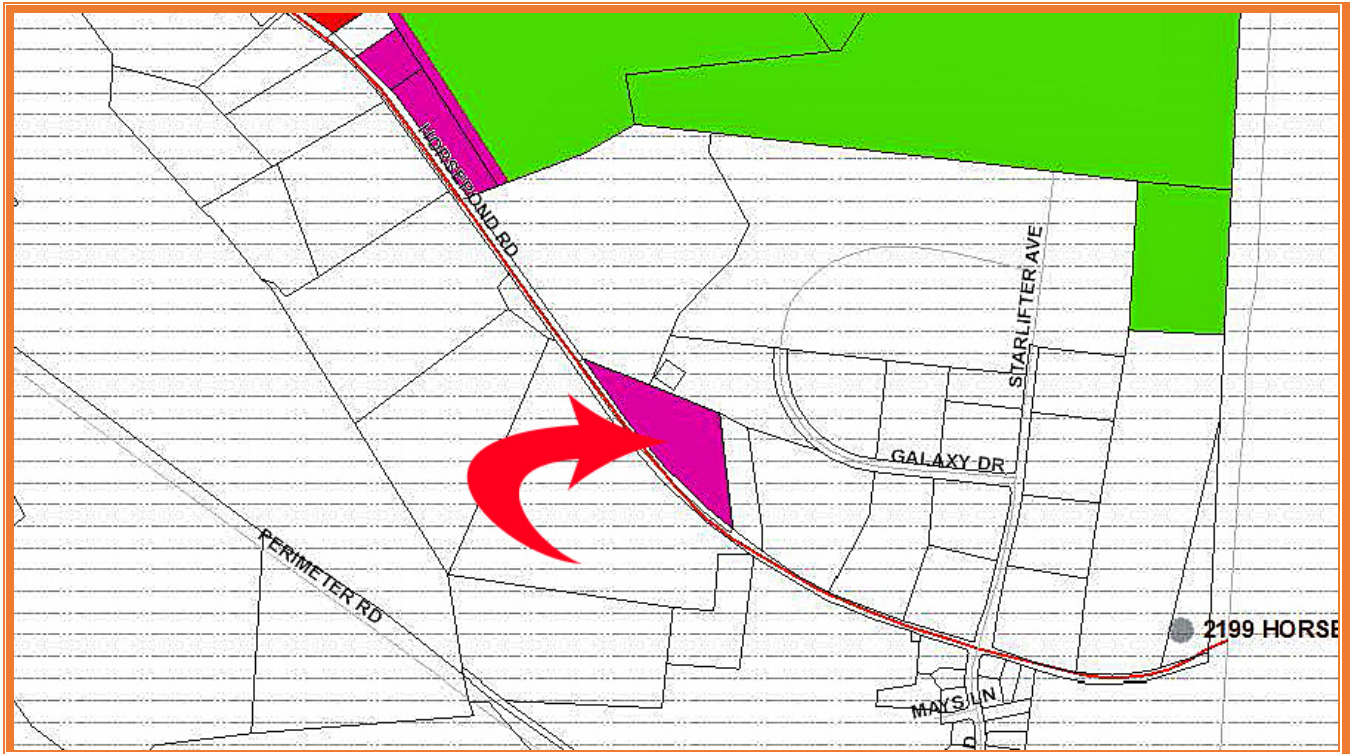
Deed Reference D3579 - 129

Zoning I - G, GENERAL INDUSTRIAL, KENT COUNTY

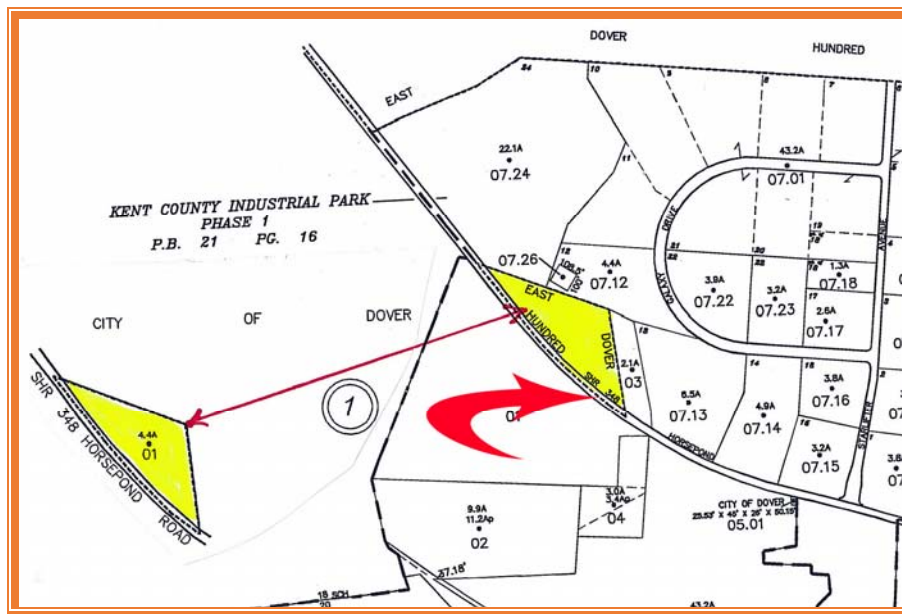
Census Tract 411

Flood Hazard Map 10001C0188J; Zone X; July 7, 2014

Land Area		190,736	sq ft +/-	4.379	acre +/-
Frontage	1,074.47	lf +/-			
Depth	549.06	lf +/-			
Bldg Area (sq ft)		0	sq ft +/-		
Coverage Ratio		0.00%			
Parking Spaces		0			
Parking Ratio		0.00	per	1000	sq ft +/-
City Tax Assessment	Per Sq Ft	Rate	Tax	Per Sq Ft	
\$0	\$0.00	\$0.415	\$0.00	\$0.00	Land
County Tax Assessment	Per Sq Ft	Rate	Tax	Per Sq Ft	
\$3,000	\$0.02	\$2.9765	\$89.30	\$0.00	Land
TOTAL PROPERTY TAX			\$89.30	\$0.00	Land



ALL INFORMATION SUBMITTED SUBJECT TO ERRORS AND MODIFICATIONS. ALL INFORMATION CONTAINED HEREIN OBTAINED FROM RELIABLE SOURCES BUT NOT GUARANTEED. PROSPECTIVE PURCHASERS SHOULD VERIFY ALL INFORMATION SUBMITTED. LISTING BROKERAGE REPRESENTS SELLER.
PAGE 2 OF 4 PAGES



ALL INFORMATION SUBMITTED SUBJECT TO ERRORS AND MODIFICATIONS. ALL INFORMATION CONTAINED HEREIN OBTAINED FROM RELIABLE SOURCES BUT NOT GUARANTEED. PROSPECTIVE PURCHASERS SHOULD VERIFY ALL INFORMATION SUBMITTED. LISTING BROKERAGE REPRESENTS SELLER.
PAGE 3 OF 4 PAGES



ALL INFORMATION SUBMITTED SUBJECT TO ERRORS AND MODIFICATIONS. ALL INFORMATION
CONTAINED HEREIN OBTAINED FROM RELIABLE SOURCES BUT NOT GUARANTEED. PROSPECTIVE PURCHASERS
SHOULD VERIFY ALL INFORMATION SUBMITTED. LISTING BROKERAGE REPRESENTS SELLER.
PAGE 4 OF 4 PAGES