



555 East Loockerman St.
Dover, Delaware 19901

Phone: 302.736.2710 Fax: 302.736.2715

www.mcginnisrealty.com

HALPERN AIRPORT ROAD OFFICE LEASE PROPERTY
1,359 SQUARE FEET VACANT OFFICE SPACE
1197 AIRPORT ROAD, MILFORD, KENT COUNTY, DELAWARE 19963
OFFICE FILE # 223383 * MLS # N/A



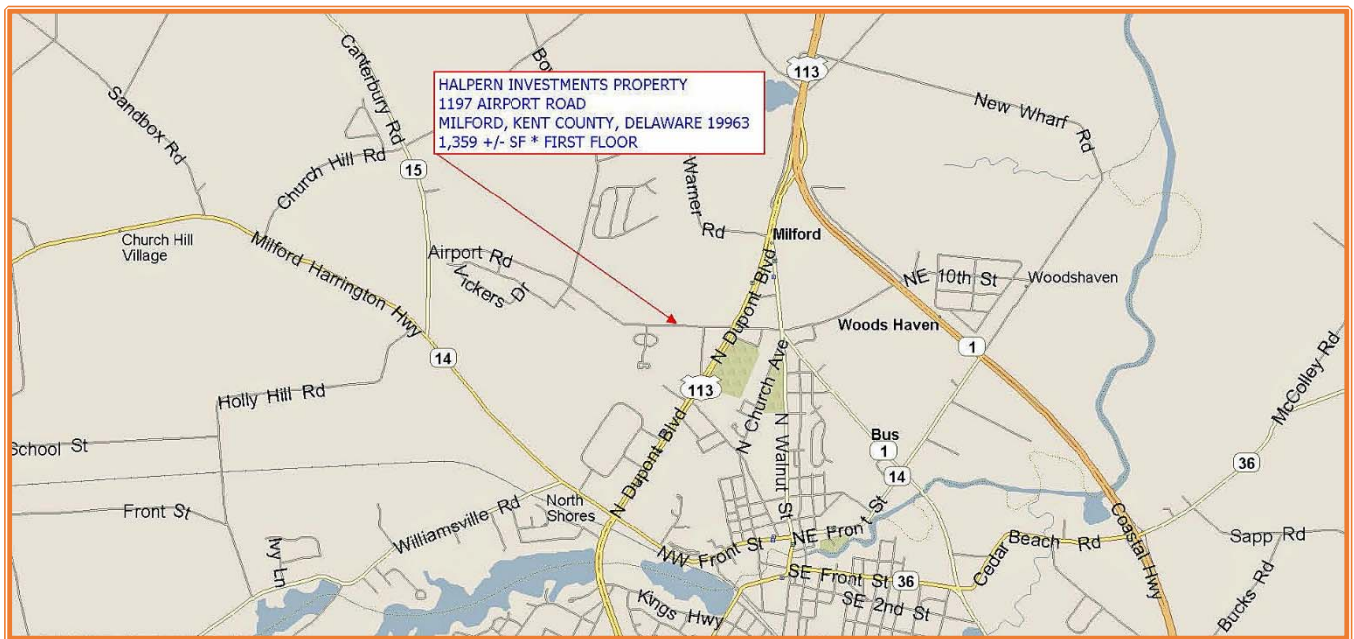
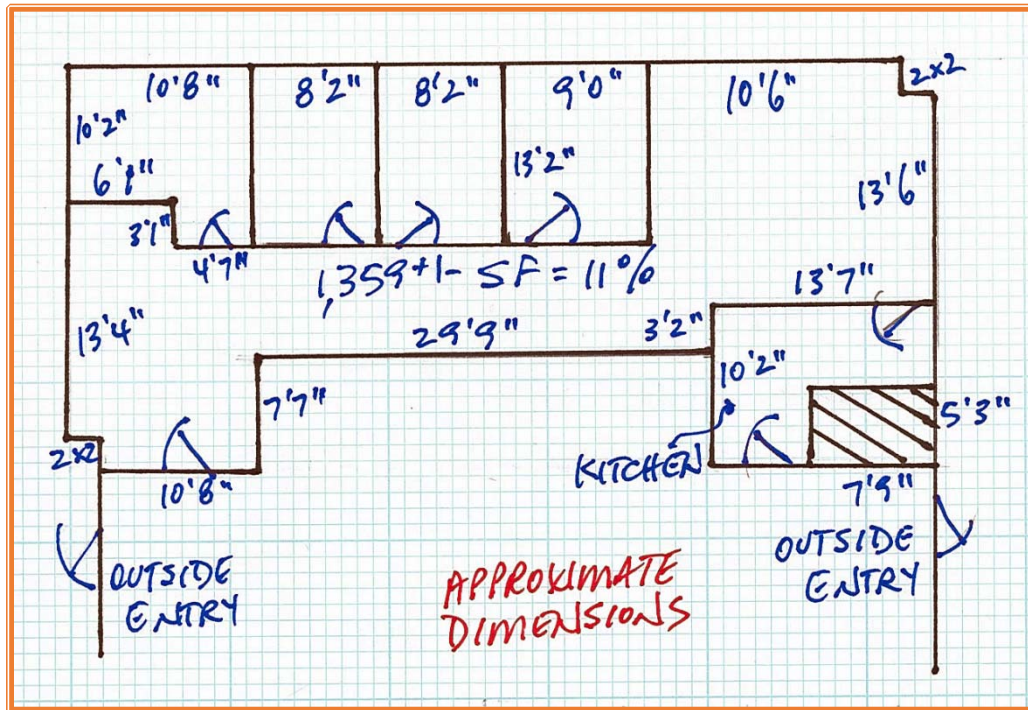
\$ 20.00 PER SQUARE FOOT GROSS LEASE PLUS UTILITIES * \$ 2,265 PER MONTH

SIZE OF SPACE	1,359	sq ft +/-
BASE RENT	\$20.00	PSF
YEAR #1 BASE RENT	\$27,180	
ANNUAL INFLATOR	3.00%	
APPROX PASS-THRU CHARGES	\$0.00	PSF
YEAR #1 TOTAL ANNUAL RENT	\$20.00	PSF
YEAR #1 ANNUAL RENT	\$27,180	
YEAR #1 MONTHLY RENT	\$2,265	
YEAR #2 ANNUAL RENT		\$27,995
YEAR #2 MONTHLY RENT		\$2,333
YEAR #3 ANNUAL RENT		\$28,835
YEAR #3 MONTHLY RENT		\$2,403

ALL INFORMATION SUBMITTED SUBJECT TO ERRORS AND MODIFICATIONS.

ALL INFORMATION CONTAINED HEREIN OBTAINED FROM RELIABLE SOURCES BUT NOT GUARANTEED. PROSPECTIVE TENANTS SHOULD VERIFY ALL INFORMATION SUBMITTED.

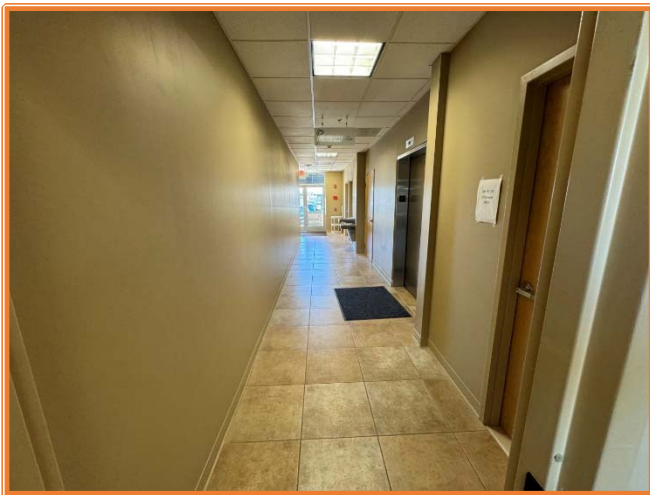
LISTING BROKERAGE REPRESENTS LESSOR * PAGE 1 OF 4 PAGES



ALL INFORMATION SUBMITTED SUBJECT TO ERRORS AND MODIFICATIONS.

ALL INFORMATION CONTAINED HEREIN OBTAINED FROM RELIABLE SOURCES BUT NOT GUARANTEED. PROSPECTIVE TENANTS SHOULD VERIFY ALL INFORMATION SUBMITTED.

LISTING BROKERAGE REPRESENTS LESSOR * PAGE 2 OF 4 PAGES



ALL INFORMATION SUBMITTED SUBJECT TO ERRORS AND MODIFICATIONS.
ALL INFORMATION CONTAINED HEREIN OBTAINED FROM RELIABLE SOURCES BUT NOT GUARANTEED. PROSPECTIVE
TENANTS SHOULD VERIFY ALL INFORMATION SUBMITTED.
LISTING BROKERAGE REPRESENTS LESSOR * PAGE 3 OF 4 PAGES



ALL INFORMATION SUBMITTED SUBJECT TO ERRORS AND MODIFICATIONS.
ALL INFORMATION CONTAINED HEREIN OBTAINED FROM RELIABLE SOURCES BUT NOT GUARANTEED. PROSPECTIVE
TENANTS SHOULD VERIFY ALL INFORMATION SUBMITTED.
LISTING BROKERAGE REPRESENTS LESSOR * PAGE 4 OF 4 PAGES