



555 East Lookerman St.
Dover, Delaware 19901

McGinnis Commercial Real Estate

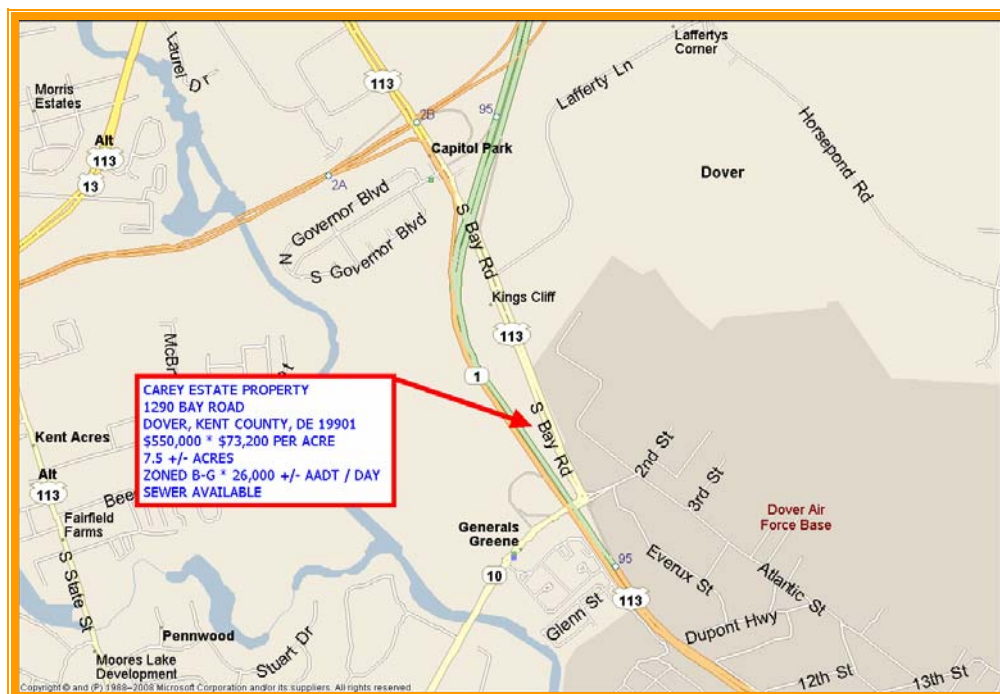
Phone: 302.736.2710 Fax: 302.736.2715

www.mcginnisrealty.com

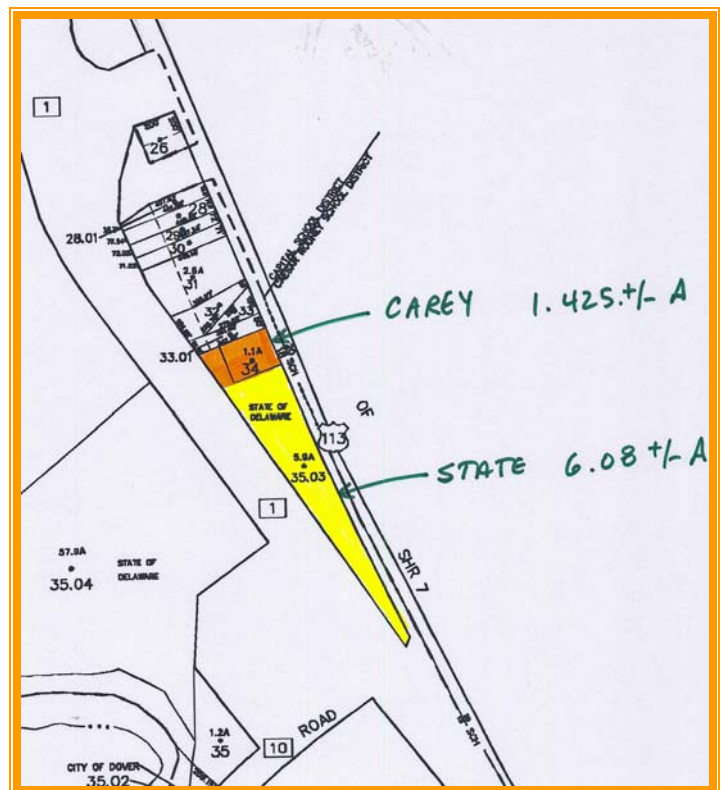
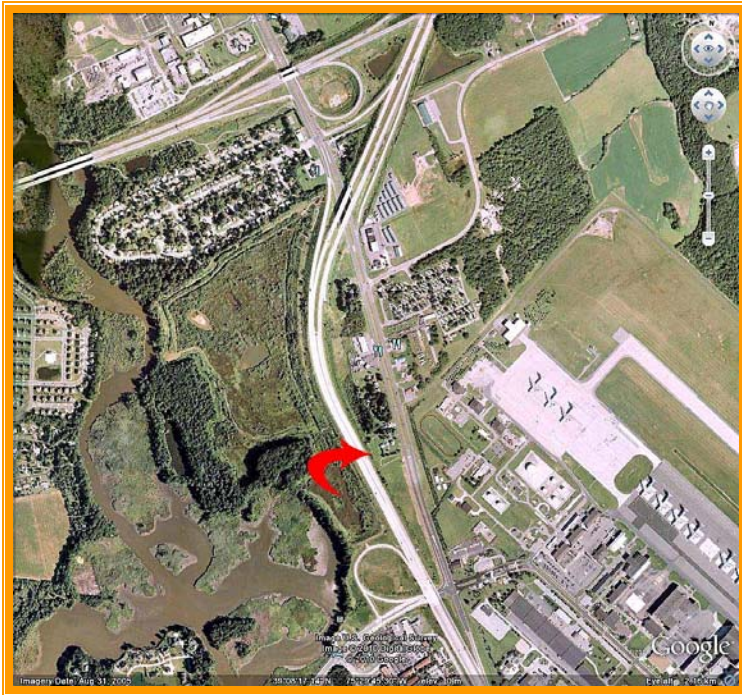
CAREY ESTATE PROPERTY
1290 BAY ROAD, DOVER, KENT COUNTY, DELAWARE 19901
OFFICE FILE #29079 * MLS #5720699



SALE PRICE \$ 550,000 * \$ 73,200 +/- PER ACRE LAND AREA

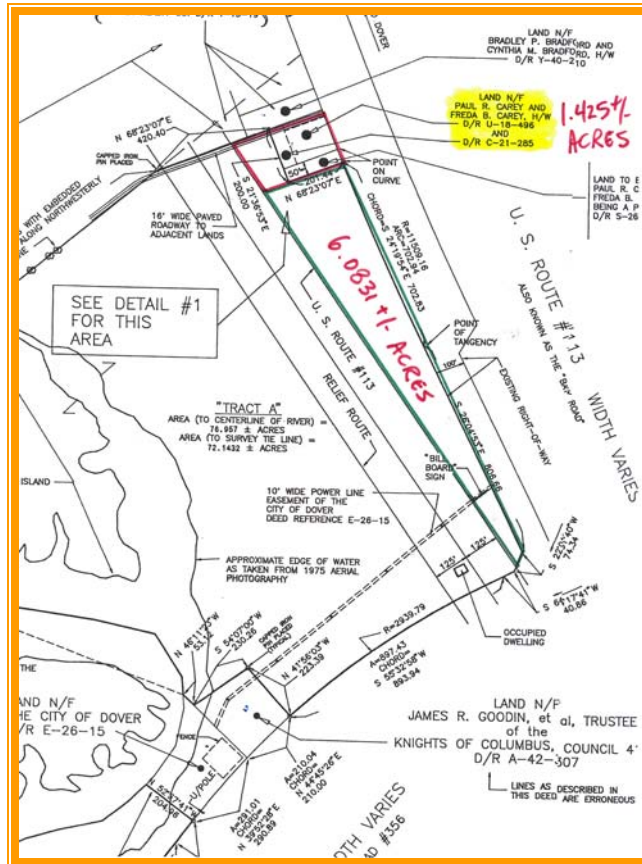


ALL INFORMATION SUBMITTED SUBJECT TO ERRORS AND MODIFICATIONS. ALL INFORMATION
CONTAINED HEREIN OBTAINED FROM RELIABLE SOURCES BUT NOT GUARANTEED. PROSPECTIVE
PURCHASERS SHOULD VERIFY ALL INFORMATION SUBMITTED. LISTING BROKERAGE REPRESENTS SELLER.
PAGE 1 OF 5 PAGES



ALL INFORMATION SUBMITTED SUBJECT TO ERRORS AND MODIFICATIONS. ALL INFORMATION CONTAINED HEREIN OBTAINED FROM RELIABLE SOURCES BUT NOT GUARANTEED. PROSPECTIVE PURCHASERS SHOULD VERIFY ALL INFORMATION SUBMITTED. LISTING BROKERAGE REPRESENTS SELLER.

PAGE 2 OF 5 PAGES



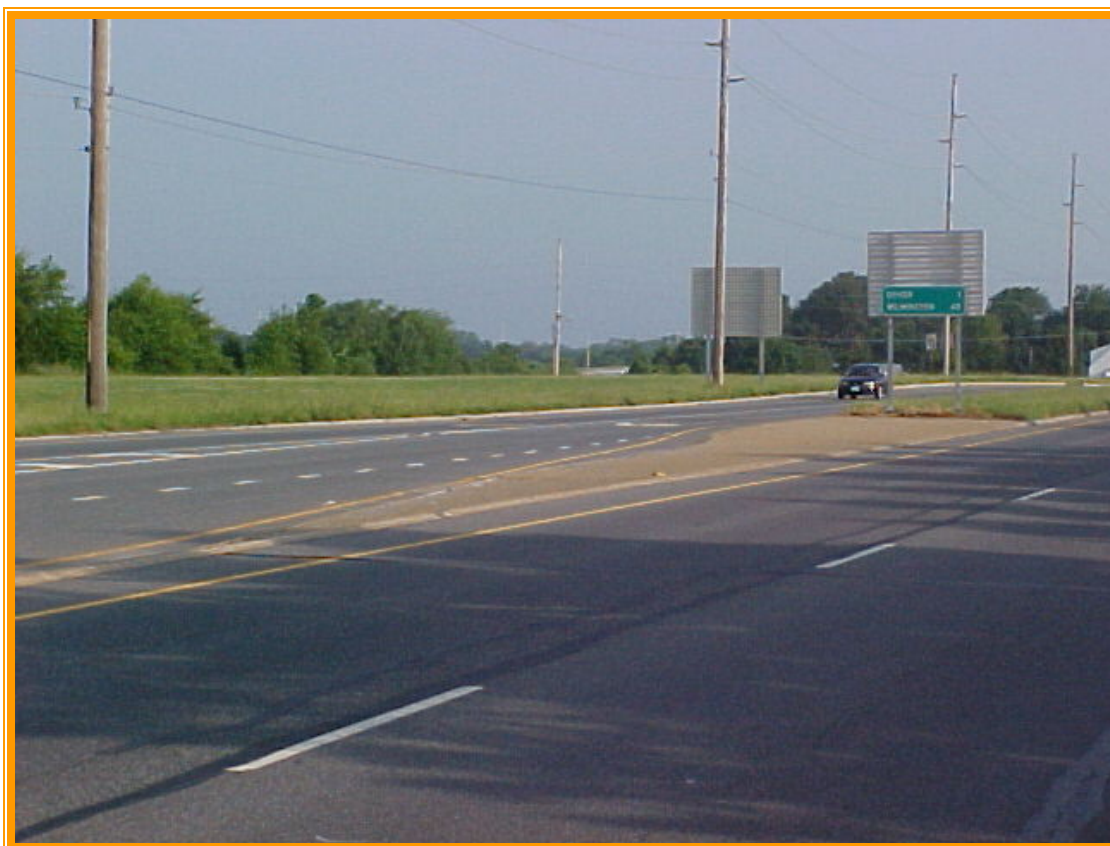
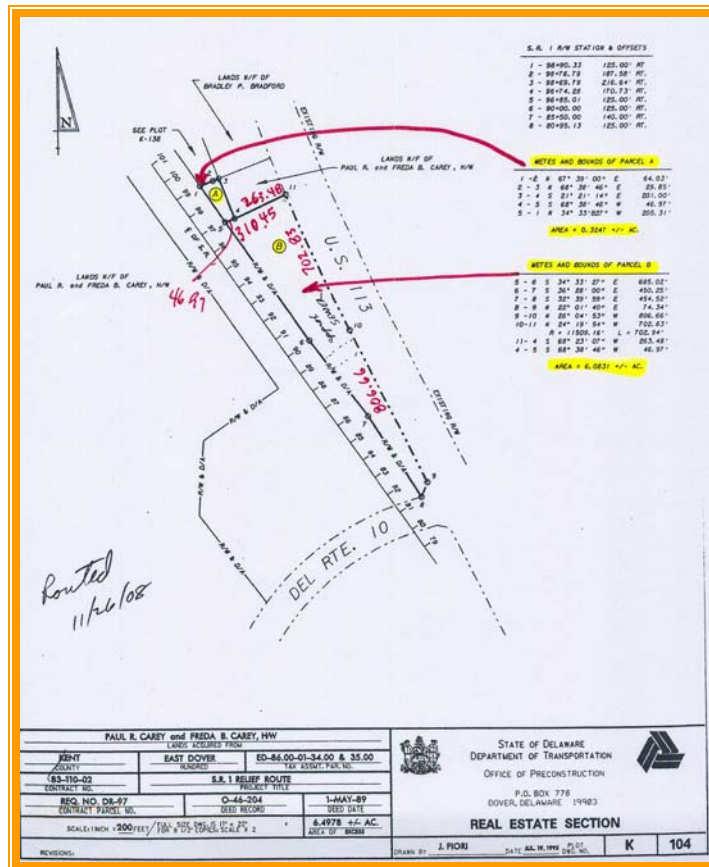
ALL INFORMATION SUBMITTED SUBJECT TO ERRORS AND MODIFICATIONS. ALL INFORMATION
CONTAINED HEREIN OBTAINED FROM RELIABLE SOURCES BUT NOT GUARANTEED. PROSPECTIVE
PURCHASERS SHOULD VERIFY ALL INFORMATION SUBMITTED. LISTING BROKERAGE REPRESENTS SELLER.
PAGE 3 OF 5 PAGES

Maint Road No.	Route Number or Road Name	End of Section Mileage	Beginning Point and Break Point Identifier	2008 AADT	Year Last Count	Traffic Group
K 5	U.S. 13, S.DUPONT HW	6.17	FELTON LIMITS	19265	05	5
K 5	U.S. 13, S.DUPONT HW	8.50	CANTERBURY RD., RD.	24415	05	5
K 6	U.S. 13, S.DUPONT HW		SUSSEX COUNTY LINE			
K 6	U.S. 13, S.DUPONT HW	2.26	SCHOOL ST., RD. 117	14858	00	5
K 6	U.S. 13, S.DUPONT HW	6.23	DEL. 14, RD. 36	20162	04	5
K 7	U.S. 113, BAY RD.		RD. 356, E.B., DEL.			
K 7	U.S. 113, BAY RD.	0.68	LAFFERTY LN., RD. 34	25922	98	2
K 7	U.S. 113, BAY RD.	1.01	RAMP 702-4	30603	02	2
K 7	U.S. 113, BAY RD.	2.08	COURT ST., RD. 67, W	41583	05	2
K 7	U.S. 113, BAY RD.	2.30	U.S. 13, RD. 24, N.B	22742	08	2
K 7	U.S. 13, S.DUPONT HW	2.31	U.S. 113 N.B.	43214	00	0
K 7	U.S. 13, S.DUPONT HW	2.44	LOOCKERMAN ST., RD.	43214	00	2
K 7	U.S. 13, S.DUPONT HW	2.60	DEL. 8, DIVISION ST.	41052	98	2
K 7	U.S. 13, N.DUPONT HW	2.61	DEL. 8, DIVISION ST.	42106	98	0
K 7	U.S. 13, N.DUPONT HW	2.94	WHITE OAK RD., RD. 6	42106	98	2
K 7	U.S. 13, N.DUPONT HW	4.05	LEIPSIC RD, RD 88	40720	02	2



ALL INFORMATION SUBMITTED SUBJECT TO ERRORS AND MODIFICATIONS. ALL INFORMATION CONTAINED HEREIN OBTAINED FROM RELIABLE SOURCES BUT NOT GUARANTEED. PROSPECTIVE PURCHASERS SHOULD VERIFY ALL INFORMATION SUBMITTED. LISTING BROKERAGE REPRESENTS SELLER.

PAGE 4 OF 5 PAGES



ALL INFORMATION SUBMITTED SUBJECT TO ERRORS AND MODIFICATIONS. ALL INFORMATION CONTAINED HEREIN OBTAINED FROM RELIABLE SOURCES BUT NOT GUARANTEED. PROSPECTIVE PURCHASERS SHOULD VERIFY ALL INFORMATION SUBMITTED. LISTING BROKERAGE REPRESENTS SELLER.

PAGE 5 OF 5 PAGES