



555 East Loockerman St.  
Dover, Delaware 19901

Phone: 302.736.2710 Fax: 302.736.2715

[www.mcginnisrealty.com](http://www.mcginnisrealty.com)

KAYS OFFICE PROPERTY  
1006 - 1012 COLLEGE ROAD, DOVER, KENT COUNTY, DELAWARE 19901

OFFICE FILE #21002

PROFESSIONAL OFFICE SPACE **FOR LEASE**



MODERN BRICK CONSTRUCTION \* COMPETITIVE RATES

LOCATED 2.5 MILES FROM ROUTE 13 IN DOVER

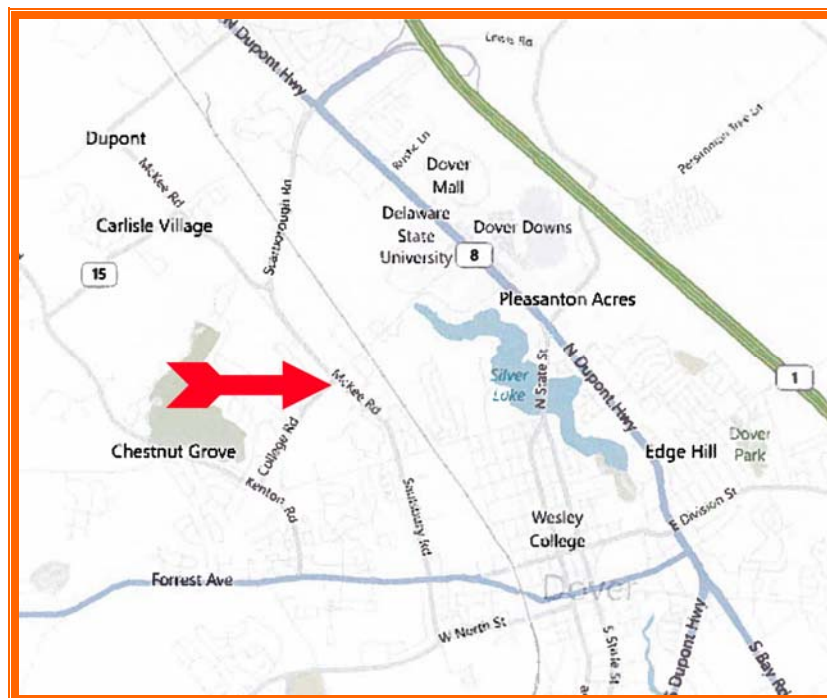
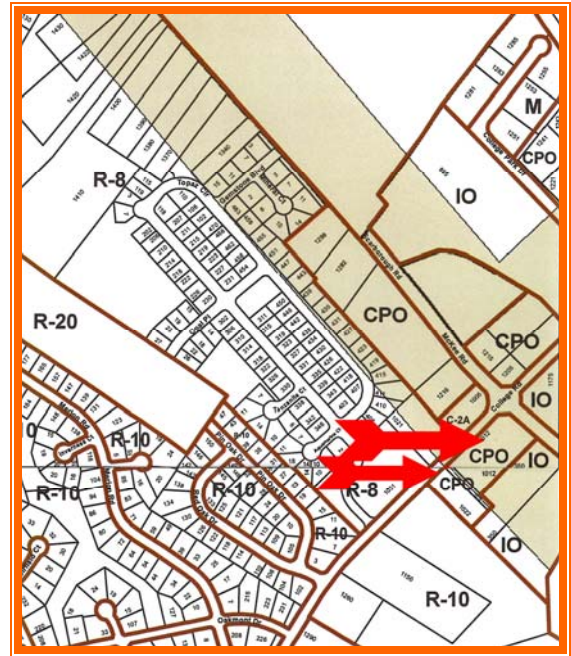
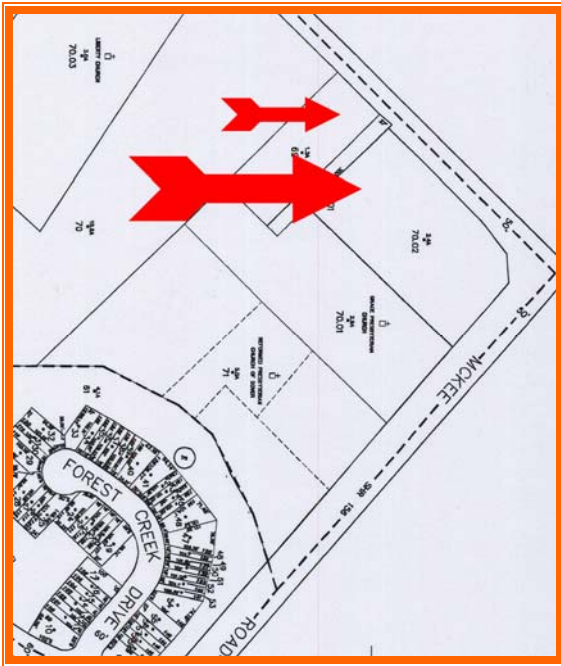
LESS THAN 5 MILES TO ROUTE 1 AT SCARBOROUGH ROAD

OFFICE SUITES AVAILABLE FROM 800-3,000 SQ FT

**AVAILABLE NOW FROM \$14.00 PSF, NET**

ALL INFORMATION SUBMITTED SUBJECT TO ERRORS AND MODIFICATIONS. ALL INFORMATION  
CONTAINED HEREIN OBTAINED FROM RELIABLE SOURCES BUT NOT GUARANTEED. PROSPECTIVE  
PURCHASERS SHOULD VERIFY ALL INFORMATION SUBMITTED. LISTING BROKERAGE REPRESENTS SELLER.

PAGE 1 OF 3 PAGES



**KAYS PROPERTIES**  
1006 & 1012 College Road  
Dover, Kent County, Delaware 19901  
**November 1, 2011**

**Tax Map Identification** ED05-067.14-01-70.02-00001

**Deed Reference** D281 10

**Zoning** CPO City of Dover

<b>Total Building Area (Sq Ft)</b>	24,250	
<b>Number of Floors</b>	2.00	ft +/-
<b>Total Number of Suites</b>	12.00	ft +/-

**Parking Spaces** 50+

**TOTAL PROPERTY TAX** To Be Assessed

For Additional Information Contact:

**CHUCK SPIEGELMAN**  
**MCGINNIS COMMERCIAL REAL ESTATE**

**OFFICE:** 302-736-2710

**FAX:** 302-736-2715

**MOBILE:** 302-632-0859

**EMAIL:** [cs@mcginnisrealty.com](mailto:cs@mcginnisrealty.com)