



**555 East Loockerman St.  
Dover, Delaware 19901**

**McGinnis Commercial Real Estate**

Phone: 302.736.2710 Fax: 302.736.2715

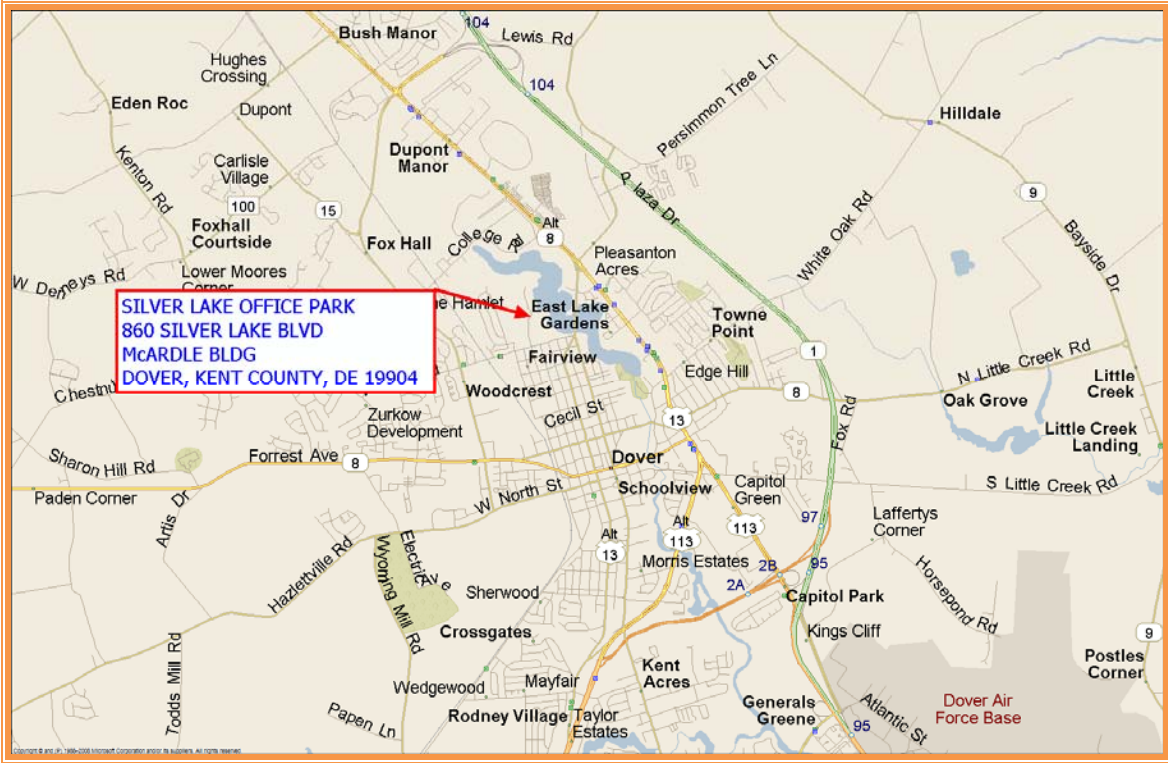
[www.mcginnisrealty.com](http://www.mcginnisrealty.com)

**PENSION BUILDING REAR SPACE OFFICE LEASE**  
**860 Silver Lake Blvd \* Dover, Kent County, Delaware 19904**  
**OFFICE FILE # 201111 \* MLS # N/A**  
**\$9.00 Per Square Foot Gross Lease**

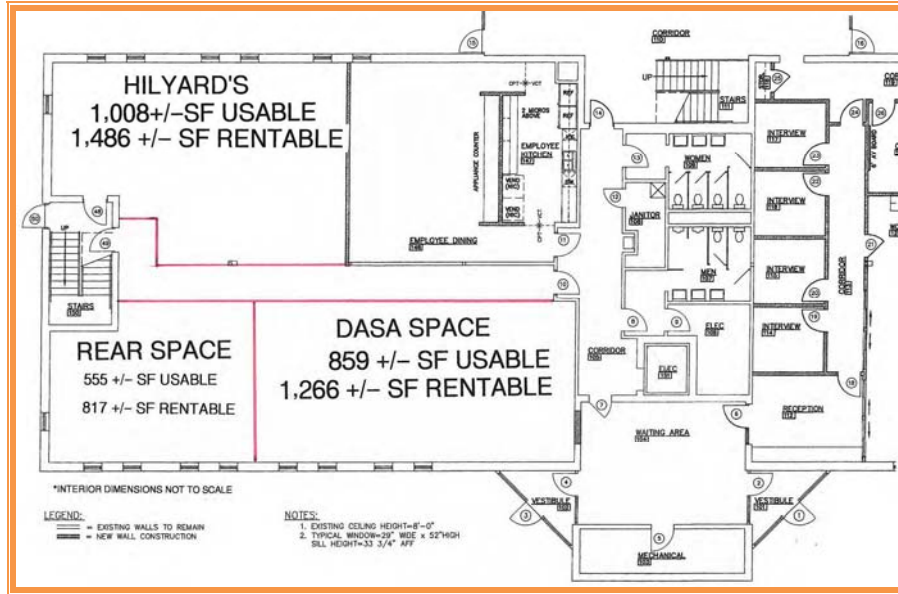


	SF +/-	% AREA		ANNUAL	MONTHLY
TOTAL BUILDING AREA	30,000	100.00%			
PENSION OFFICE AREA	26,431	88.10%			
DASA OFFICE AREA	1,266	4.22%			
HILYARDS OFFICE AREA	1,486	4.95%			
AVAILABLE OFFICE AREA	817	2.72%	\$9.00	\$7,353	\$613

**ALL INFORMATION SUBMITTED SUBJECT TO ERRORS AND MODIFICATIONS.**  
**ALL INFORMATION CONTAINED HEREIN OBTAINED FROM RELIABLE SOURCES BUT NOT GUARANTEED.**  
**PROSPECTIVE PURCHASERS SHOULD VERIFY ALL INFORMATION SUBMITTED.**  
**LISTING BROKERAGE REPRESENTS SELLER \* PAGE 1 OF 3 PAGES**



**ALL INFORMATION SUBMITTED SUBJECT TO ERRORS AND MODIFICATIONS.  
ALL INFORMATION CONTAINED HEREIN OBTAINED FROM RELIABLE SOURCES BUT NOT GUARANTEED.  
PROSPECTIVE PURCHASERS SHOULD VERIFY ALL INFORMATION SUBMITTED.  
LISTING BROKERAGE REPRESENTS SELLER \* PAGE 2 OF 3 PAGES**



**ALL INFORMATION SUBMITTED SUBJECT TO ERRORS AND MODIFICATIONS.  
 ALL INFORMATION CONTAINED HEREIN OBTAINED FROM RELIABLE SOURCES BUT NOT GUARANTEED.  
 PROSPECTIVE PURCHASERS SHOULD VERIFY ALL INFORMATION SUBMITTED.  
 LISTING BROKERAGE REPRESENTS SELLER \* PAGE 3 OF 3 PAGES**