

DOVER AUTO Property

5102 North Dupont Highway, Dover, Kent County, DELAWARE 19901

OFFICE FILE # 2i6269



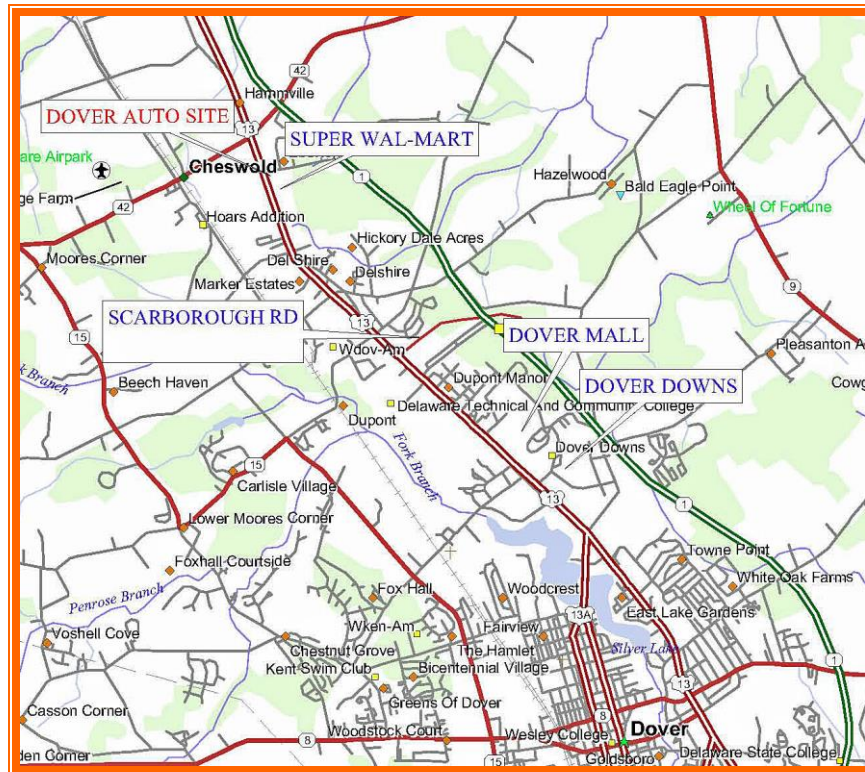
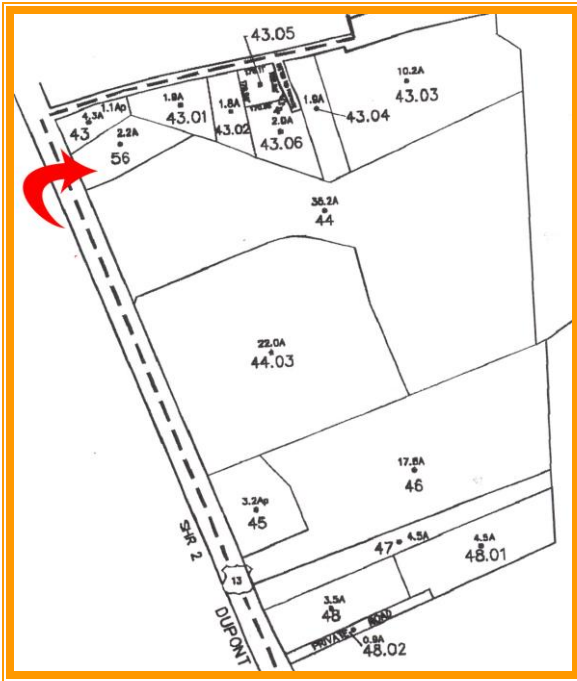
2.2 ACRE SITE FOR SALE

RESTAURANT, RETAIL, BANK, DRUG STORE

ADJACENT TO THE NEW SUPER WAL-MART IN CHESWOLD

200 foot of frontage on Route 13 and 400 foot depth

OFFERED FOR SALE AT \$1,500,000



ALL INFORMATION SUBMITTED SUBJECT TO ERRORS AND MODIFICATIONS. ALL INFORMATION CONTAINED HEREIN OBTAINED FROM RELIABLE SOURCES BUT NOT GUARANTEED. PROSPECTIVE PURCHASERS SHOULD VERIFY ALL INFORMATION SUBMITTED. LISTING BROKERAGE REPRESENTS SELLER.
 PAGE 2 OF 3 PAGES

Dover Auto Property
5102 North Dupony Highway
Dover, Kent County, Delaware 19901
November 1, 2016

Tax Map Identification LC-00-04700-01-5600

Deed Reference S 47 350

Zoning IG Kent County

Flood Map 1001C0152H

Land Area	2.2 acres	95,832 sq ft
Frontage	194.00	ft +/-
Depth	400.00	ft +/-

County Tax	Rate	Tax
Assessment	\$1.60	
\$106,200		\$1,937.850

TOTAL PROPERTY TAX		\$1,937.85
---------------------------	--	------------

For Additional Information Contact:

Chuck Spiegelman, Associate Broker
McGinnis Commercial Real Estate Company
555 East Loockerman Street
Dover, Delaware 19901

Direct: 302-632-0859
Office: 302-736-2710
Fax: 302-736-2715
Email: cs@mcginnisrealty.com

www.mcginnisrealty.com