



**555 East Lookerman St.
Dover, Delaware 19901**

Phone: 302.736.2710 Fax: 302.736.2715

www.mcginnisrealty.com

**BOYCE PROPERTY
4877 WHEATLEY'S POND RD, SMYRNA, KENT COUNTY, DELAWARE 19977**

OFFICE FILE# 29085 MLS# 5615212



SALE PRICE \$ 3,000,000 * \$ 200.00 +/- PER SQUARE FOOT

MODERN 15,000 SQUARE FOOT BUILDING AND ADDITIONAL OUT BUILDINGS

7.4 ACRES WITH 700 FEET OF ROAD FRONTAGE AND 500 FEET DEEP

3 MILES FROM ROUTE 1 INTERCHANGE AT SOUTH SMYRNA

EASY ACCESS TO MARYLAND ROUTE 301

SUB DIVISION POSSIBLE WITH NUMEROUS COMMERCIAL POSSIBILITIES

**ALL INFORMATION SUBMITTED SUBJECT TO ERRORS AND MODIFICATIONS. ALL INFORMATION
CONTAINED HEREIN OBTAINED FROM RELIABLE SOURCES BUT NOT GUARANTEED. PROSPECTIVE
PURCHASERS SHOULD VERIFY ALL INFORMATION SUBMITTED. LISTING BROKERAGE REPRESENTS SELLER.**

PAGE 1 OF 4 PAGES

Tax Map Identification DC04-018.11-01-30.01-000

Deed D320 0125

Zonin C-2, General Commercial Town of Clayton

Land 322,344 sq ft 7.4 Acres

Frontage 700.00 ft
Depth 500.00 ft

Bldg Area (sq ft) 15,000 sq ft

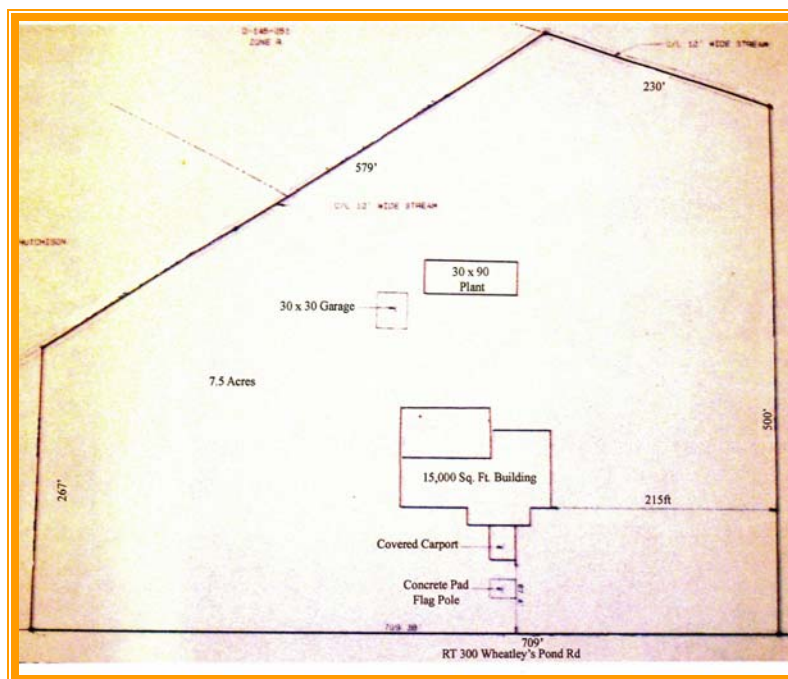
Parking 101

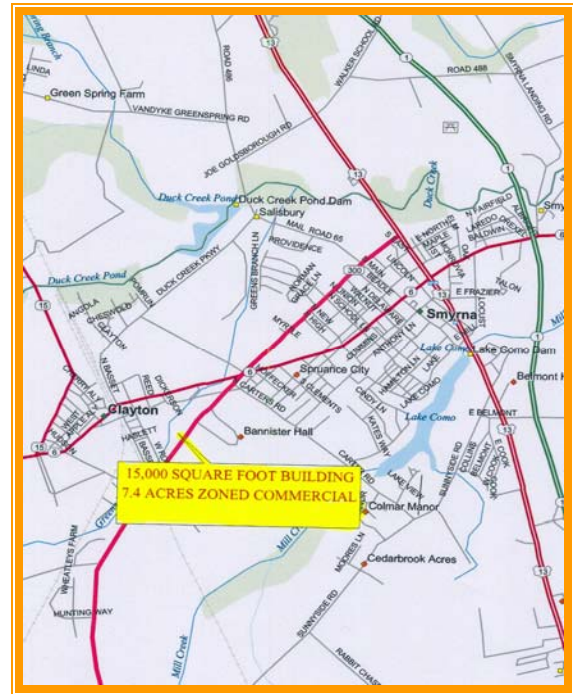
Parking 3.37 per 500 sf

City Tax	Assessmen	Per Sq	Rate	Tax	Per Sq
	\$301,800	\$20.12	\$0.650	\$1,961.70	\$0.13

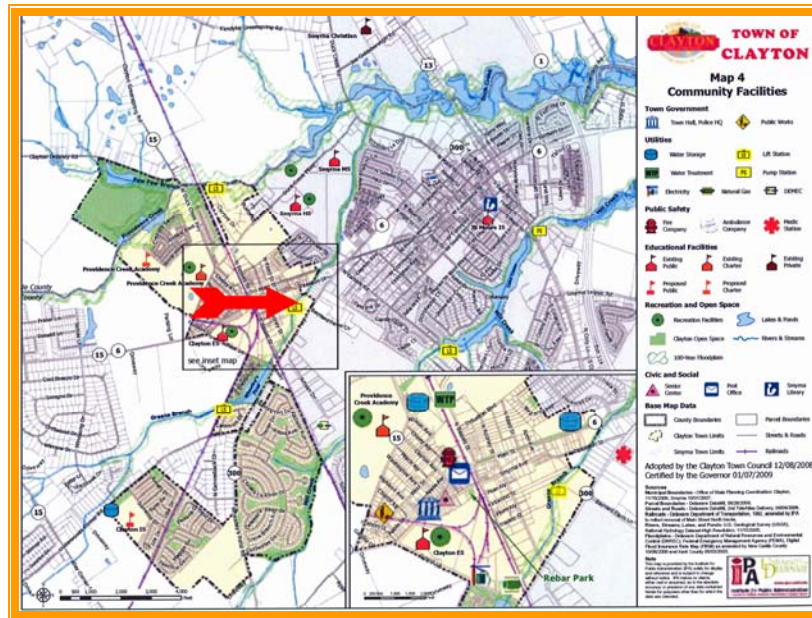
County	Assessmen	Per Sq	Rate	Tax	Per Sq
	\$301,800	\$20.12	\$1.8519	\$5,217.82	\$0.35

TOTAL PROPERTY TAX				\$7,179.52	\$0.48
---------------------------	--	--	--	------------	--------





ALL INFORMATION SUBMITTED SUBJECT TO ERRORS AND MODIFICATIONS. ALL INFORMATION
CONTAINED HEREIN OBTAINED FROM RELIABLE SOURCES BUT NOT GUARANTEED. PROSPECTIVE
PURCHASERS SHOULD VERIFY ALL INFORMATION SUBMITTED. LISTING BROKERAGE REPRESENTS SELLER.
PAGE 3 OF 4 PAGES



FOR ADDITIONAL INFORMATION CONTACT:

CHUCK SPIEGELMAN
MCGINNIS COMMERCIAL REAL ESTATE

OFFICE: 302-736-2710

FAX: 302-736-2715

MOBILE: 302-632-0859

EMAIL: cs@mcginnisrealty.com

ALL INFORMATION SUBMITTED SUBJECT TO ERRORS AND MODIFICATIONS. ALL INFORMATION CONTAINED HEREIN OBTAINED FROM RELIABLE SOURCES BUT NOT GUARANTEED. PROSPECTIVE PURCHASERS SHOULD VERIFY ALL INFORMATION SUBMITTED. LISTING BROKERAGE REPRESENTS SELLER.
 PAGE 4 OF 4 PAGES