



555 East Lookerman St.
Dover, Delaware 19901

McGinnis Commercial Real Estate

Phone: 302.736.2710 Fax: 302.736.2715

www.mcginnisrealty.com

PALMER CONSTRUCTION Property
9867 South DuPont Highway, FELTON, KENT COUNTY, DELAWARE 19943

OFFICE FILE# 212150 MLS# 6034686

FOR SALE OR LEASE

OWNER FINANCING AVAILABLE FOR QUALIFIED BUYERS
RETAIL, CONTRACTOR OR PROFESSIONAL OFFICE PROPERTY



SALE PRICE \$ 379,000 * \$ 105.00 +/- PER SQUARE FOOT

(LEASE PRICE \$4,000 PER MONTH, NET)

MULTI USE CONTRACTOR, RETAIL OR OFFICE PROPERTY

2 STAND ALONE BUILDINGS PLUS STORAGE BUILDINGS / ON SITE PARKING

CONVIENIENT VISIBLE HIGHWAY LOCATION AND 1.5 ACRE FENCED YARD

CURRENT USE IS CONTRACTORS YARD

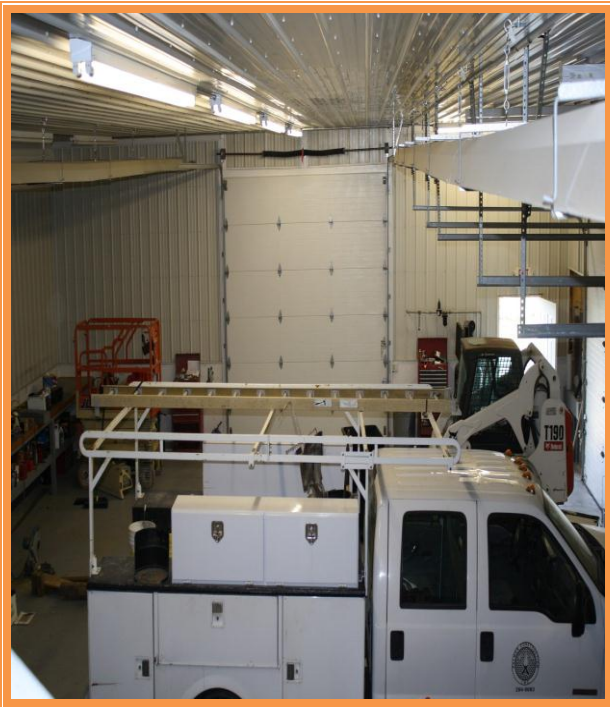
**ALL INFORMATION SUBMITTED SUBJECT TO ERRORS AND MODIFICATIONS. ALL INFORMATION
CONTAINED HEREIN OBTAINED FROM RELIABLE SOURCES BUT NOT GUARANTEED. PROSPECTIVE
PURCHASERS SHOULD VERIFY ALL INFORMATION SUBMITTED. LISTING BROKERAGE REPRESENTS SELLER.
PAGE 1 OF 4 PAGES**

PALMER CONSTRUCTION PROPERTY
9867 SOUTH DUPONT HWY
FELTON, KENT COUNTY, DE 19943
April 6, 2012

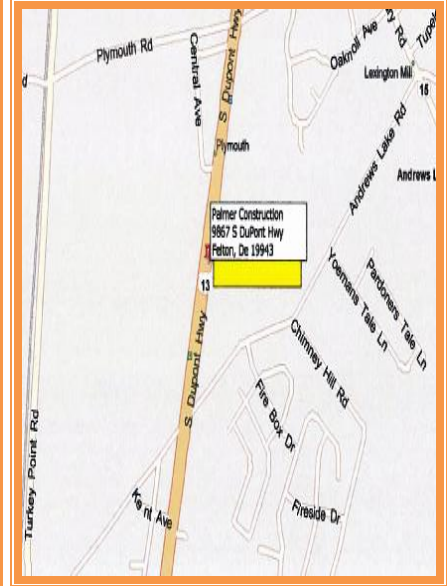
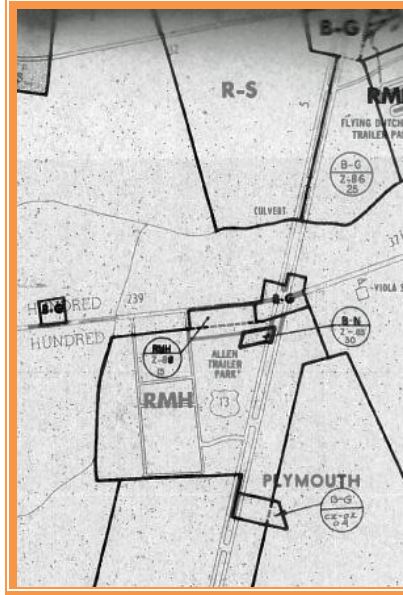
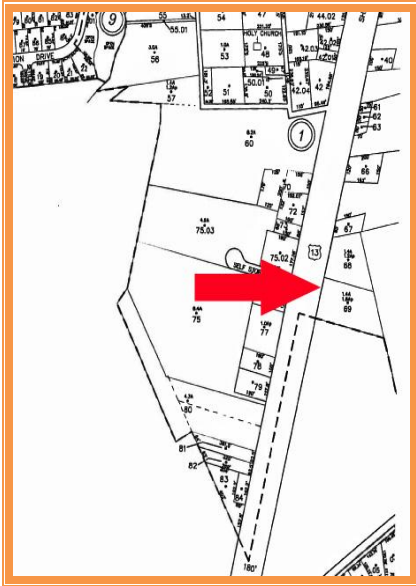
Tax Map Identification	SM-00-129.01-01-69.00
Deed Reference	D484 124
Zoning	BG General Business Kent County
Land Area	1.56 Acres
Frontage	175.00 ft +/-
Depth	300.00 ft +/-
Bldg Area (sq ft)	
Bldg #1 (office)	1,200 sq ft
Bldg #2 (shop)	2,400 sq ft
County Property Tax 2011	\$312.69
County School Tax 2011	\$1,168.87
TOTAL PROPERTY TAX	\$1,481.56

- 1,300 Square Foot Finished Block Office Building with Full Basement and Elevator
- 2,400 Steel Shop Building with 3-10x12 Doors and 1-14x12 Door, Radiant Heat and Attic
- 3 Phase Power Available
- BG Zoning in Kent County
- Fully Fenced 1.5 Acre Yard.
- Owner Financing Available
- Priced to Sell

AVIALABLE IMMEDIATELY FOR SALE OR LEASE



ALL INFORMATION SUBMITTED SUBJECT TO ERRORS AND MODIFICATIONS. ALL INFORMATION CONTAINED HEREIN OBTAINED FROM RELIABLE SOURCES BUT NOT GUARANTEED. PROSPECTIVE PURCHASERS SHOULD VERIFY ALL INFORMATION SUBMITTED. LISTING BROKERAGE REPRESENTS SELLER. PAGE 3 OF 4 PAGES



FOR ADDITIONAL INFORMATION CONTACT:

CHUCK SPIEGELMAN
MCGINNIS COMMERCIAL REAL ESTATE

OFFICE: 302-736-2710

FAX: 302-736-2715

MOBILE: 302-632-0859

EMAIL: cs@mcginnisrealty.com

ALL INFORMATION SUBMITTED SUBJECT TO ERRORS AND MODIFICATIONS. ALL INFORMATION CONTAINED HEREIN OBTAINED FROM RELIABLE SOURCES BUT NOT GUARANTEED. PROSPECTIVE PURCHASERS SHOULD VERIFY ALL INFORMATION SUBMITTED. LISTING BROKERAGE REPRESENTS SELLER.
PAGE 4 OF 4 PAGES