



555 East Lookerman St.
Dover, Delaware 19901

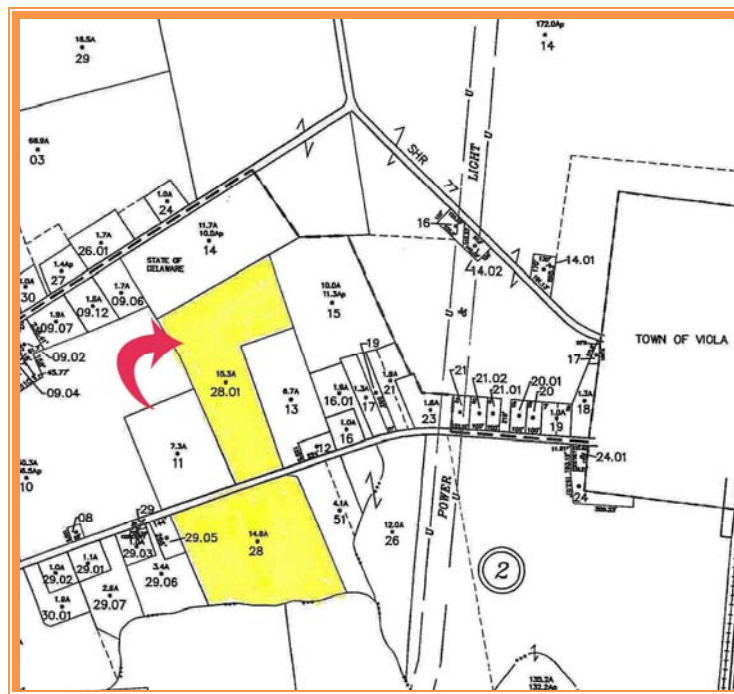
Phone: 302.736.2710 Fax: 302.736.2715

www.mcginnisrealty.com

VIOLA MILLS RESIDENTIAL SUBDIVISION
LEWIS DRIVE & LEIPSIC ROAD, VIOLA, KENT COUNTY, DELAWARE 19904
OFFICE FILE # : 201120 * MLS # : 6175251



SALE PRICE \$ 251,900 * \$ 16,500 +/- PER ACRE



ALL INFORMATION SUBMITTED SUBJECT TO ERRORS AND MODIFICATIONS. ALL INFORMATION
CONTAINED HEREIN OBTAINED FROM RELIABLE SOURCES BUT NOT GUARANTEED. PROSPECTIVE
PURCHASERS SHOULD VERIFY ALL INFORMATION SUBMITTED. LISTING BROKERAGE REPRESENTS SELLER.
PAGE 1 OF 4 PAGES

Tax Map Identification NM00 - 119.00 - 02 - 28.01

Deed Reference D3378 - 278

Zoning A - R, Agricultural Residential, Kent County

Census Tract 421

Flood Hazard Map 10001C0240H; May 5, 2003

Land Area 668,162 sq ft +/- 15.339 acres

Frontage Parcel 28.01 344.29 ft +/-

Depth Parcel 28.01 1,218.40 ft +/-

Improvements None

City Tax				
Assessment	Per Acre	Rate	Tax	Per Acre
\$0	\$0.00	\$0.338	\$0.00	\$0.00

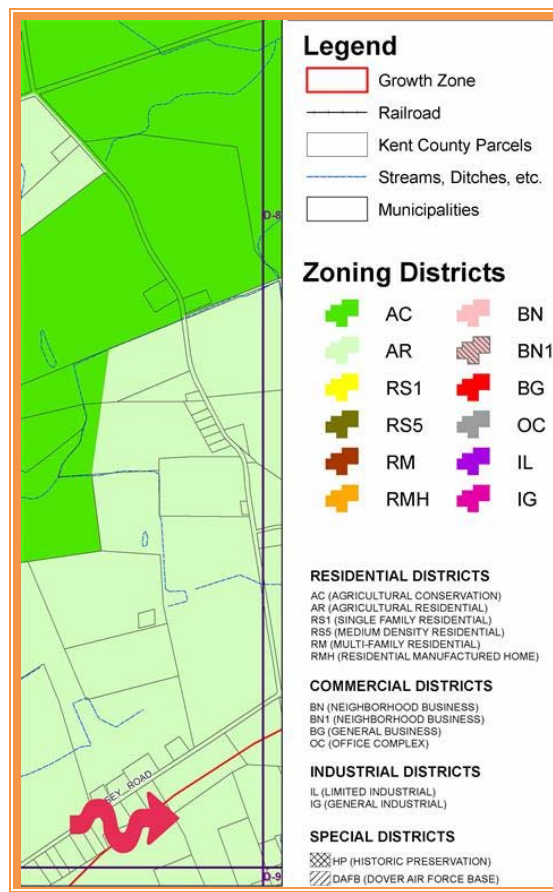
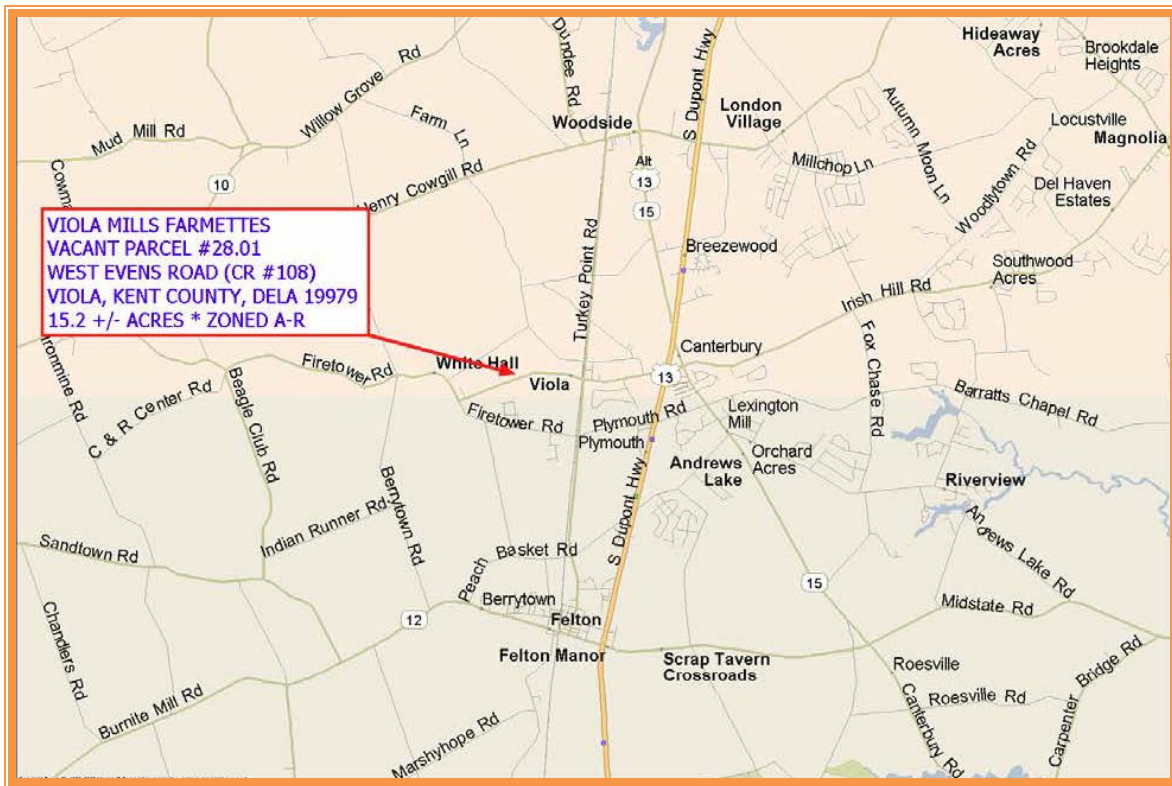
County Tax				
Assessment	Per Acre	Rate	Tax	Per Acre
\$11,000	\$152.78	\$1.5778	\$173.56	\$2.41

TOTAL PROPERTY TAX			\$173.56	\$2.41
---------------------------	--	--	----------	--------



ALL INFORMATION SUBMITTED SUBJECT TO ERRORS AND MODIFICATIONS. ALL INFORMATION CONTAINED HEREIN OBTAINED FROM RELIABLE SOURCES BUT NOT GUARANTEED. PROSPECTIVE PURCHASERS SHOULD VERIFY ALL INFORMATION SUBMITTED. LISTING BROKERAGE REPRESENTS SELLER.

PAGE 2 OF 4 PAGES



ALL INFORMATION SUBMITTED SUBJECT TO ERRORS AND MODIFICATIONS. ALL INFORMATION CONTAINED HEREIN OBTAINED FROM RELIABLE SOURCES BUT NOT GUARANTEED. PROSPECTIVE PURCHASERS SHOULD VERIFY ALL INFORMATION SUBMITTED. LISTING BROKERAGE REPRESENTS SELLER.

PAGE 3 OF 4 PAGES



ALL INFORMATION SUBMITTED SUBJECT TO ERRORS AND MODIFICATIONS. ALL INFORMATION
CONTAINED HEREIN OBTAINED FROM RELIABLE SOURCES BUT NOT GUARANTEED. PROSPECTIVE
PURCHASERS SHOULD VERIFY ALL INFORMATION SUBMITTED. LISTING BROKERAGE REPRESENTS SELLER.
PAGE 4 OF 4 PAGES