

MIDDLETOWN APPLIANCE OUTLET PROPERTY
211 EAST MAIN STREET, MIDDLETOWN, NEW CASTLE COUNTY, DELAWARE 19709

OFFICE FILE#211140 MLS# 6001437

FOR SALE

RETAIL / RESTAURANT / OFFICE / COMMERCIAL PROPERTY



SALE PRICE \$ 1,000,000 * \$ 97.50 +/- PER SQUARE FOOT

10,260 SQUARE FOOT STAND ALONE BUILDING ON 1 ACRE

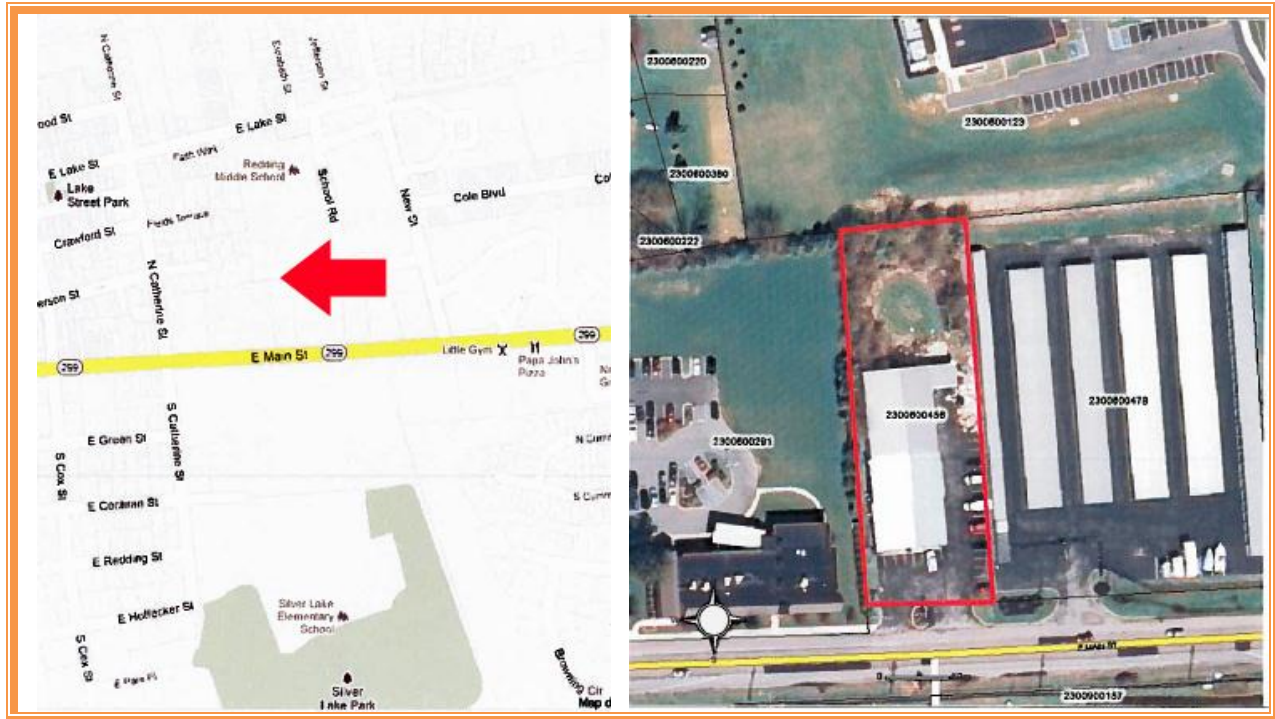
4,880 SQUARE FEET OF SHOWROOM/RETAIL

5,380 SQUARE FEET OF WAREHOUSE

HIGH TRAFFIC LOCATION WITH GREAT VISIBILITY

LOCATED IN THE HEART OF MIDDLETOWN ON EAST MAIN STREET (ROAD 299)

**ALL INFORMATION SUBMITTED SUBJECT TO ERRORS AND MODIFICATIONS. ALL INFORMATION
CONTAINED HEREIN OBTAINED FROM RELIABLE SOURCES BUT NOT GUARANTEED. PROSPECTIVE
PURCHASERS SHOULD VERIFY ALL INFORMATION SUBMITTED. LISTING BROKERAGE REPRESENTS SELLER.
PAGE 1 OF 3 PAGES**



ALL INFORMATION SUBMITTED SUBJECT TO ERRORS AND MODIFICATIONS. ALL INFORMATION CONTAINED HEREIN OBTAINED FROM RELIABLE SOURCES BUT NOT GUARANTEED. PROSPECTIVE PURCHASERS SHOULD VERIFY ALL INFORMATION SUBMITTED. LISTING BROKERAGE REPRESENTS SELLER.
PAGE 2 OF 3 PAGES

MIDDLETOWN APPLIANCE PROPERTY
211 EAST MAIN STREET
MIDDLETOWN, NEW CASTLE COUNTY,
DE
February 1, 2012

Tax Map Identification 2300600456

Deed Reference X96 116

Zoning 23C-2 DOWNTOWN
COMMERCIAL
Town of Middletown

Land Area	41,111 Sq Ft	.95 Acres
Frontage	116.10	ft +/-
Depth	354.10	ft +/-

Bldg Area (sq ft) 10,260

Parking Spaces 15+

City Tax 2011 \$542

County Tax 2011 \$3,147.53

TOTAL PROPERTY TAX \$3,792.86

FOR ADDITIONAL INFORMATION CONTACT:

CHUCK SPIEGELMAN
MCGINNIS COMMERCIAL REAL ESTATE

OFFICE: 302-736-2710

FAX: 302-736-2715

MOBILE: 302-632-0859

EMAIL: cs@mcginnisrealty.com

**ALL INFORMATION SUBMITTED SUBJECT TO ERRORS AND MODIFICATIONS. ALL INFORMATION
CONTAINED HEREIN OBTAINED FROM RELIABLE SOURCES BUT NOT GUARANTEED. PROSPECTIVE
PURCHASERS SHOULD VERIFY ALL INFORMATION SUBMITTED. LISTING BROKERAGE REPRESENTS SELLER.
PAGE 3 OF 3 PAGES**