



555 East Lookerman St.  
Dover, Delaware 19901

McGinnis Commercial Real Estate

Phone: 302.736.2710 Fax: 302.736.2715

www.mcginnisrealty.com

LAKELAND WEST CAPITAL PROPERTY  
136 DELAWARE AVE, HARRINGTON, KENT COUNTY, DELA 19952  
FILE #218309 \* MLS # 7229868



\$185,000 \* \$7.75 +/- PER SF LAND \* \$84 +/- PER SF BLDG AREA



ALL INFORMATION SUBMITTED SUBJECT TO ERRORS AND MODIFICATIONS. ALL INFORMATION CONTAINED HEREIN OBTAINED FROM RELIABLE SOURCES BUT NOT GUARANTEED. PROSPECTIVE PURCHASERS SHOULD VERIFY ALL INFORMATION SUBMITTED. LISTING BROKERAGE REPRESENTS SELLER.  
PAGE 1 OF 5 PAGES

**Tax Map Identification** MN00 - 171.00 - 01 - 37.00 - 00001

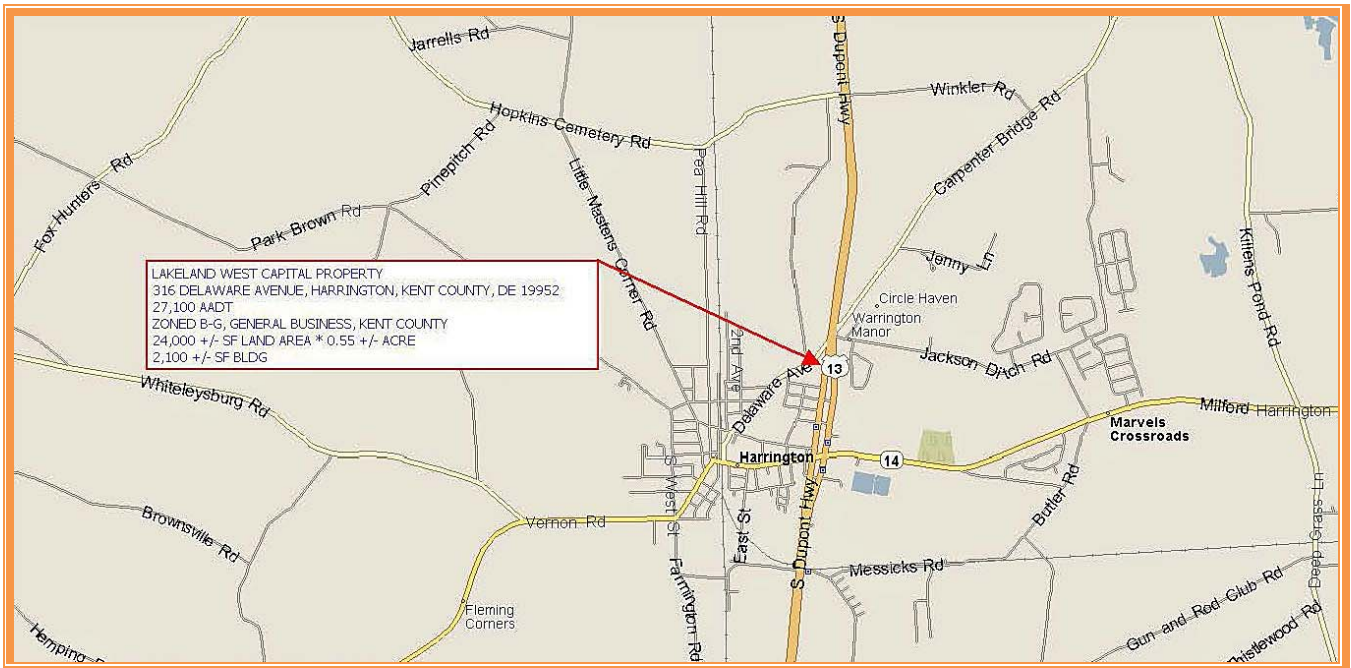
**Deed Reference** D9186 - 252

**Zoning** BG, GENERAL BUSINESS, KENT COUNTY

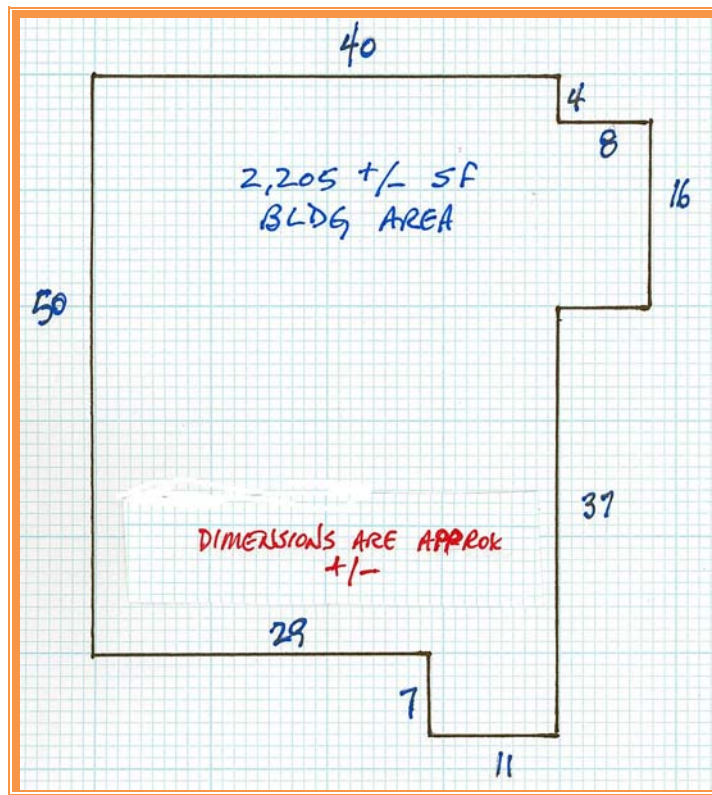
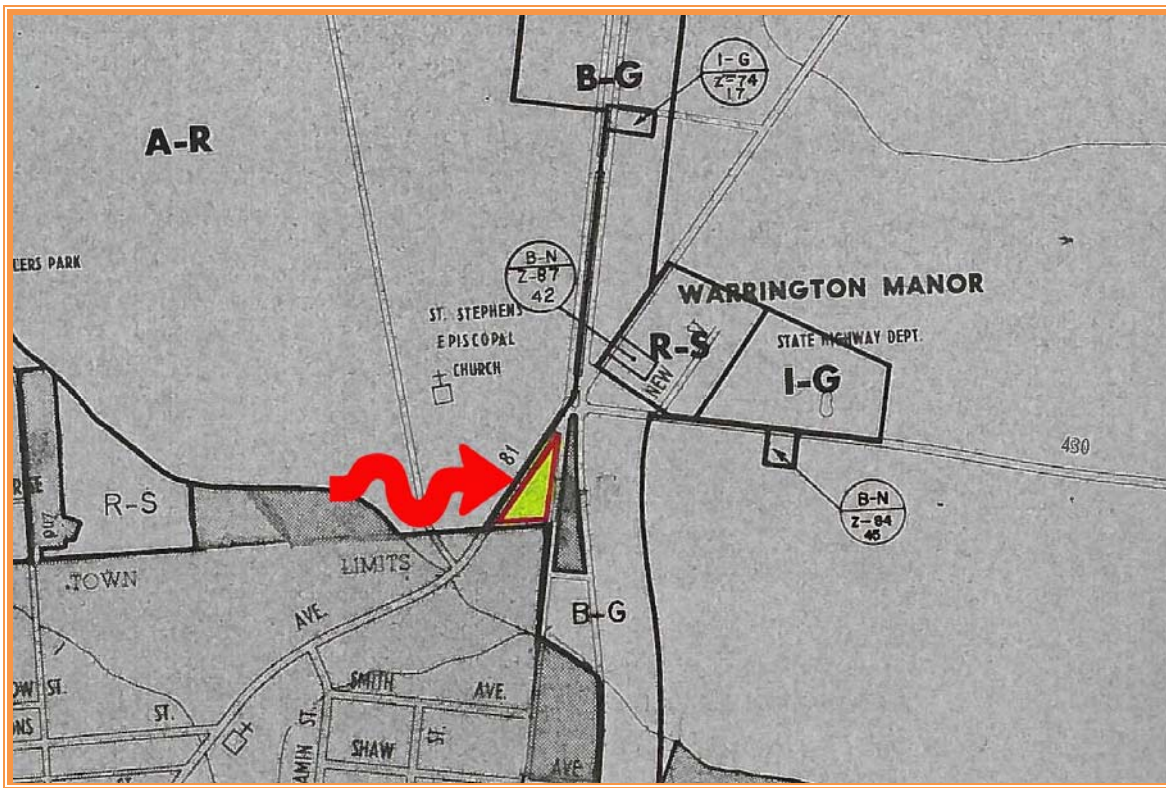
**Census Tract** 430

**Flood Hazard Map** 10001C0337J; Zone X, JUL7 7, 2014

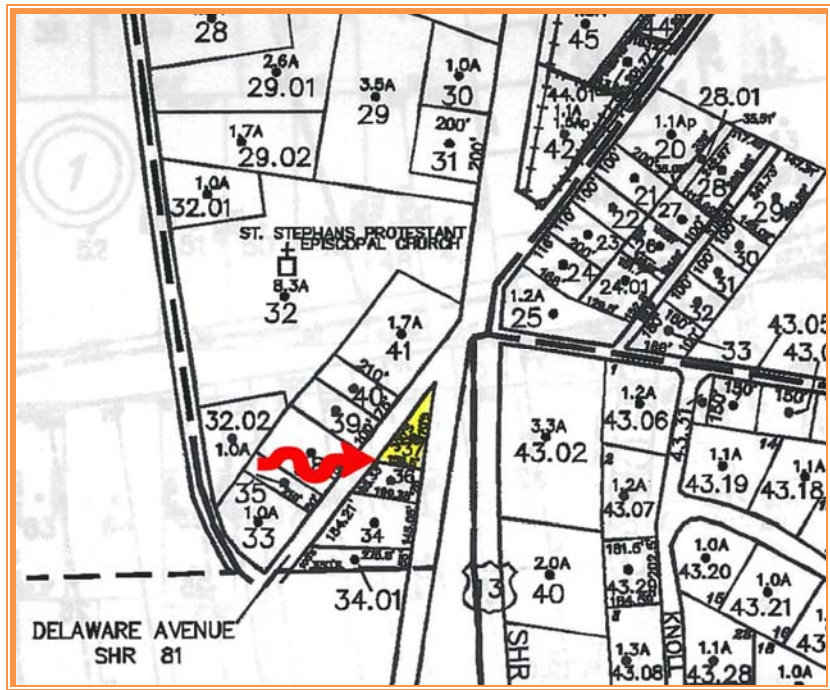
<b>Land Area</b>		23,923	sq ft +/-	0.549	acre
<b>Frontage</b>	300.00	ft +/-	DuPont Hwy		
<b>Depth</b>	341.47	ft +/-	Delaware Avenue		
<b>Bldg Area (sq ft)</b>		2,205	sq ft +/-		
<b>width</b>	40	ft +/-			
<b>depth</b>	50	ft +/-			
<b>Coverage Ratio</b>		9.22%			
<b>Parking Spaces</b>		2			
<b>Parking Ratio</b>		0.27	per 300 sf		
<b>City Tax Assessment</b>					
\$0	<b>Per Sq Ft</b>	<b>Rate</b>	<b>Tax</b>	<b>Per Sq Ft</b>	
	\$0.00	\$0.405	\$0.00	\$0.00	
<b>County Tax Assessment</b>					
\$63,500	<b>Per Sq Ft</b>	<b>Rate</b>	<b>Tax</b>	<b>Per Sq Ft</b>	
	\$28.80	\$2.1383	\$1,357.82	\$0.62	
<b>TOTAL PROPERTY TAX</b>			\$1,357.82	\$0.62	



ALL INFORMATION SUBMITTED SUBJECT TO ERRORS AND MODIFICATIONS. ALL INFORMATION CONTAINED HEREIN OBTAINED FROM RELIABLE SOURCES BUT NOT GUARANTEED. PROSPECTIVE PURCHASERS SHOULD VERIFY ALL INFORMATION SUBMITTED. LISTING BROKERAGE REPRESENTS SELLER.  
PAGE 2 OF 5 PAGES



ALL INFORMATION SUBMITTED SUBJECT TO ERRORS AND MODIFICATIONS. ALL INFORMATION CONTAINED HEREIN OBTAINED FROM RELIABLE SOURCES BUT NOT GUARANTEED. PROSPECTIVE PURCHASERS SHOULD VERIFY ALL INFORMATION SUBMITTED. LISTING BROKERAGE REPRESENTS SELLER.  
PAGE 3 OF 5 PAGES



Maint Road No.	Route Number or Road Name	End of Section Mileage	Beginning Point and Break Point Identifier	2017 AADT	Year Last Counted	Traffic Group
K 5	U.S. 13, S.DUPONT HW		DEL. 14, RD. 36			
K 5	US. 13, S.DUPONT HWY	0.69	RD. 35, CARPENTER BR	27077	12	5
K 5	US. 13, S.DUPONT HWY	5.76	DEL. 12, RD. 34	22585	12	5
K 5	US. 13, S.DUPONT HWY	6.17	FELTON LIMITS	22963	13	5
K 5	US. 13, S.DUPONT HWY	8.50	CANTERBURY RD., RD.	34678	12	5
K 6	U.S. 13, S.DUPONT HW		SUSSEX COUNTY LINE			
K 6	US. 13, S.DUPONT HW	2.26	SCHOOL ST., RD. 117	26320	14	5
K 6	US. 13, S.DUPONT HWY	6.23	DEL. 14, RD. 36	21385	12	5
K 7	BAY RD.		RD. 356, E.B., DEL.			
K 7	BAY RD.	0.68	RD. 356 E.B	22024	14	2
K 7	BAY RD.	1.01	LAFFERTY LN., RD. 34	20730	17	2

**ALL INFORMATION SUBMITTED SUBJECT TO ERRORS AND MODIFICATIONS. ALL INFORMATION CONTAINED HEREIN OBTAINED FROM RELIABLE SOURCES BUT NOT GUARANTEED. PROSPECTIVE PURCHASERS SHOULD VERIFY ALL INFORMATION SUBMITTED. LISTING BROKERAGE REPRESENTS SELLER.**  
**PAGE 4 OF 5 PAGES**



**ALL INFORMATION SUBMITTED SUBJECT TO ERRORS AND MODIFICATIONS. ALL INFORMATION CONTAINED HEREIN OBTAINED FROM RELIABLE SOURCES BUT NOT GUARANTEED. PROSPECTIVE PURCHASERS SHOULD VERIFY ALL INFORMATION SUBMITTED. LISTING BROKERAGE REPRESENTS SELLER.  
PAGE 5 OF 5 PAGES**